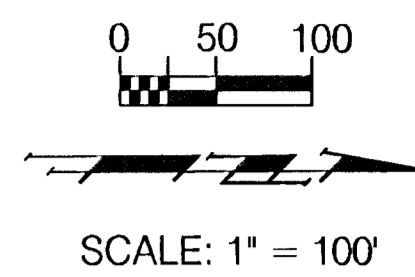
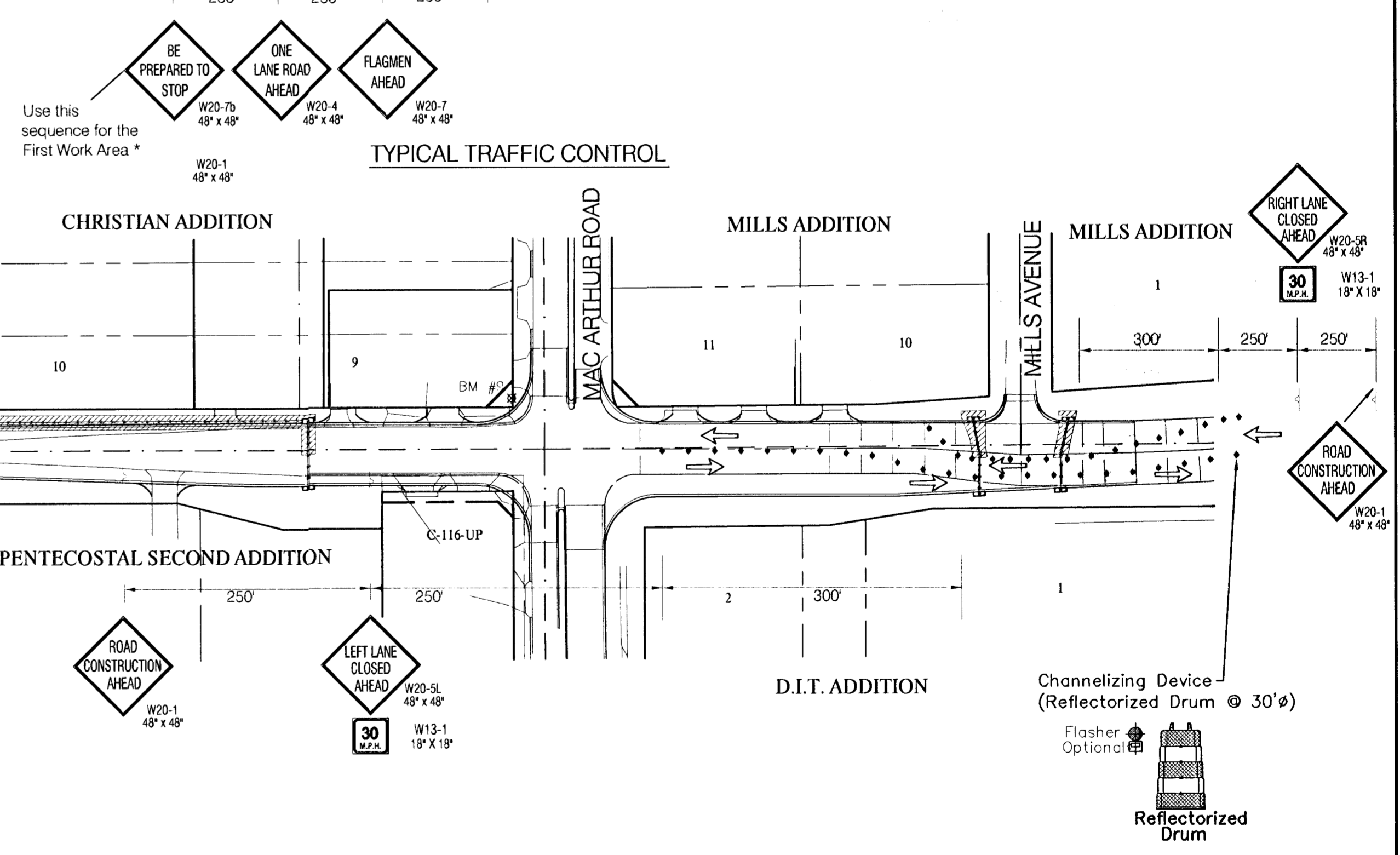
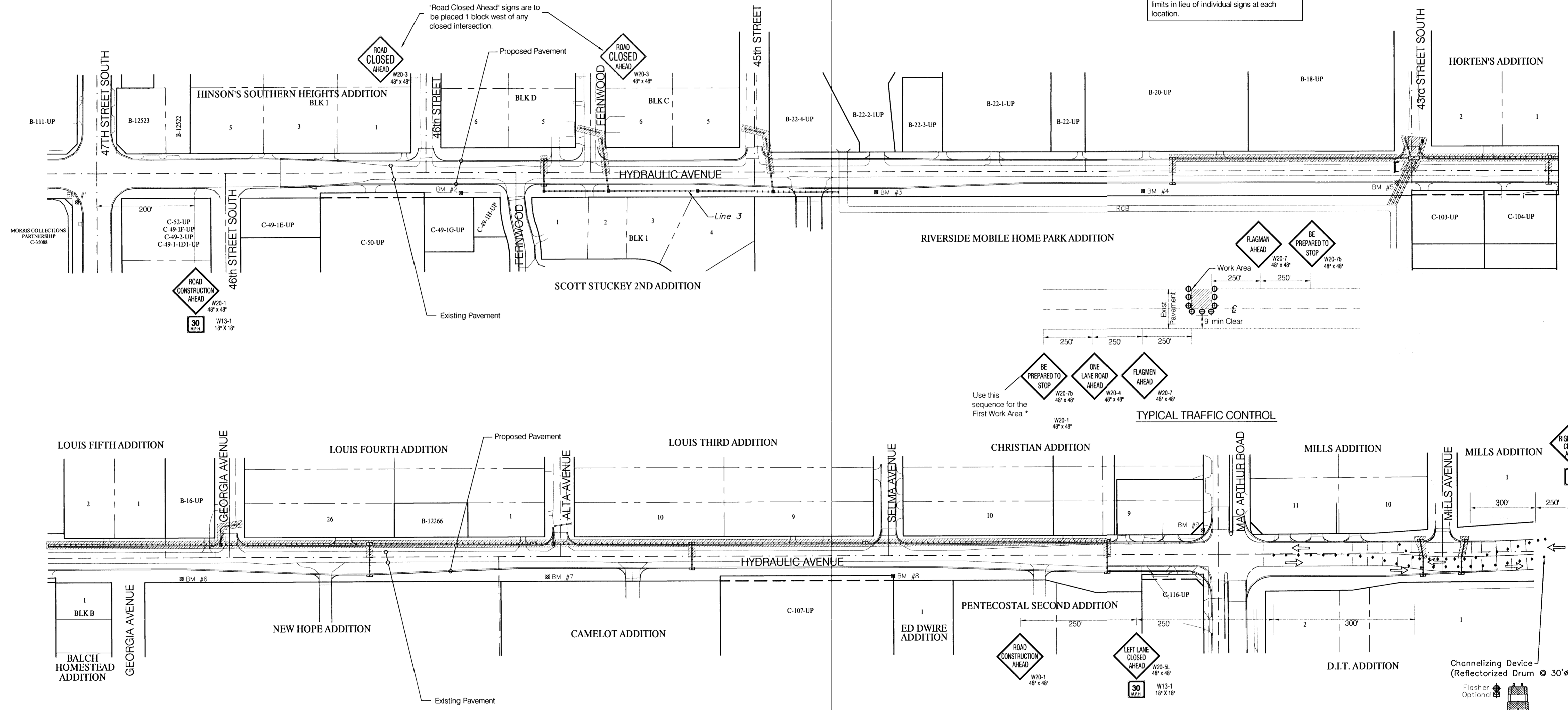


Phase I



Note: Maintain Traffic Flow @ Crossroad Pipes with Plates and/or Temporary Pavement.

Note: If several work areas exist at the same time, a "Road Construction Ahead" sign may be installed at each end if the construction limits in lieu of individual signs at each location.



LEGEND	
	Work Area
	Traffic Sign
	Reflectorized Drum
	Tubular Marker
	Type III Barricade
	Temp Lane Markings (White)
	Temp Lane Markings (Yellow)
	Traffic Flow Pattern

PROJECT NUMBER 472-76-245-83324			SHEET NAME Conseq01		ENGINEERING DIRECTORY FA/Eng/Hydraulic/Conseq		CAPITAL IMPROVEMENT PROJECT HYDRAULIC AVENUE TRAFFIC CONTROL HYDRAULIC AVENUE PAVING - 47TH STREET SOUTH TO MACARTHUR ROAD			BAUGHMAN COMPANY, P.A. ENGINEERING, SURVEYING, & PLANNING 316-262-7271 • 315 ELLIS • WICHITA, KANSAS 67211		SHEET 71 OF 102
DESIGN JFB	DRAWN KWR	APPROVED JFB	DATE Sept. 2002	SCALE Noted	BAUGHMAN NO 99-09-E450							