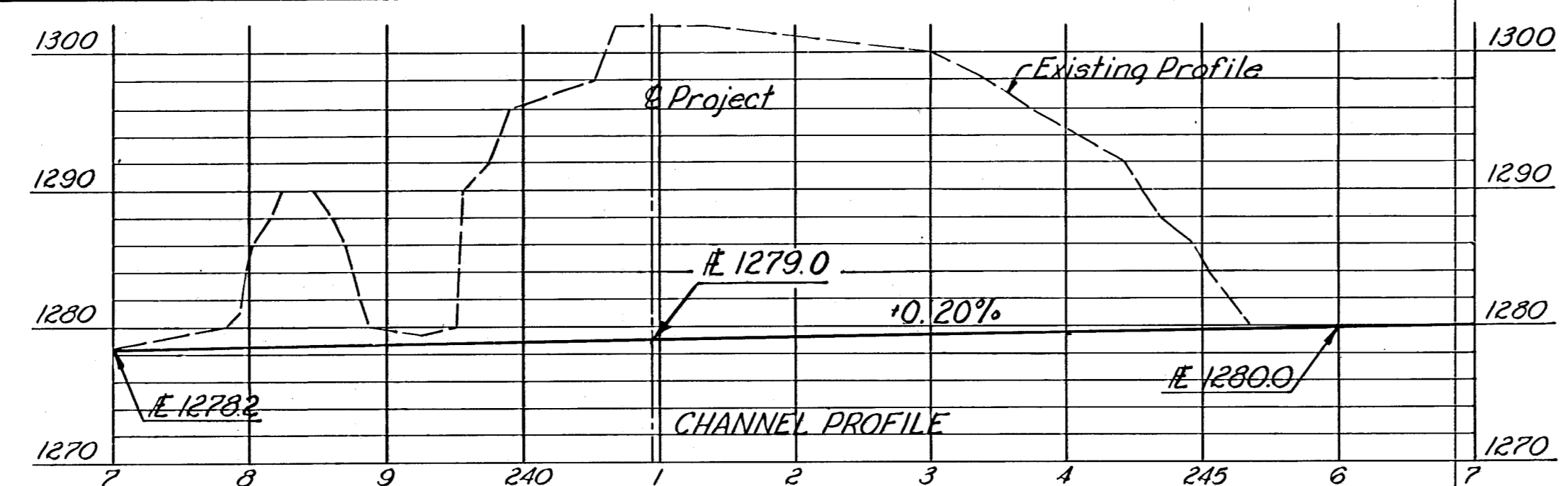


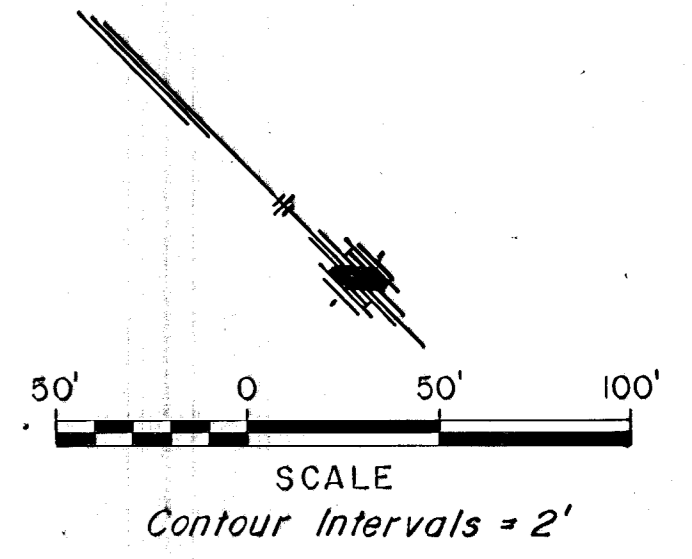
PT. Sta. 17+55.35
 1. Steel Nail & Washer @ P.T.
 2. Nail & Tin in 62'10" WSW
 3. Metal Fe. Post 81.35' SW
 4. Nail & Tin in 60" Tree 73.00' SE



PI. Sta. 22+03.13 Bk =
 Sta. 22+02.25 Ahd.
 Steel Nail & Washer @ P.I.
 Pin w/ "Booker" cap 250.00' back
 of P.I. on Forward Tangent Line
 extended back.

P.O.T. Sta. 30+00.00
 1. Steel Nail & Washer @ P.O.T.
 2. Nail & Tin in 90" Tree 127.75' NNW
 3. Top of Fire Hydrant 129.25' NW
 4. Nail & Tin in 110" Tree 36.37' NE

ES&W REGION NO.	STATE	PROJECT NO.	SHEET NO.	TOTAL SHEETS
1	KANSAS	87U-1247-01	25	79

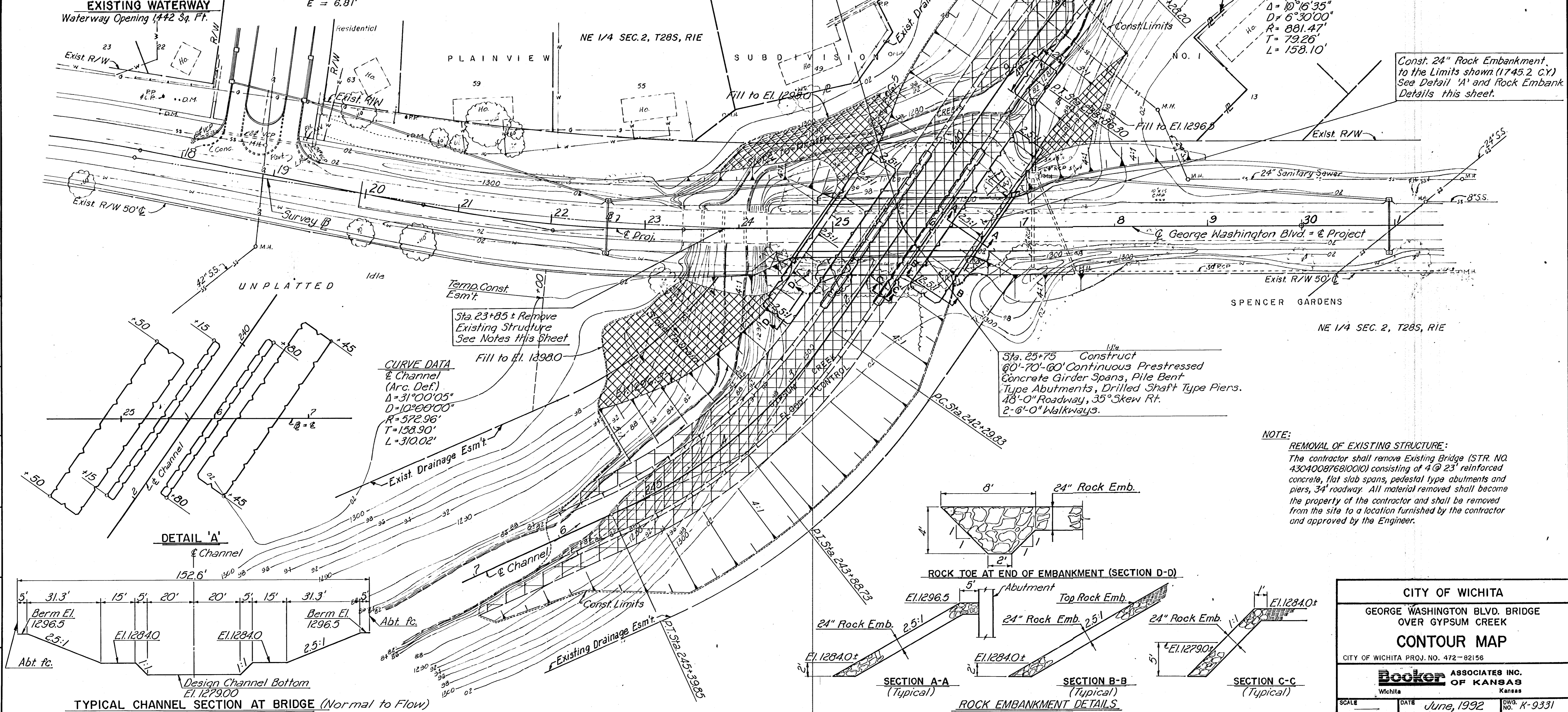
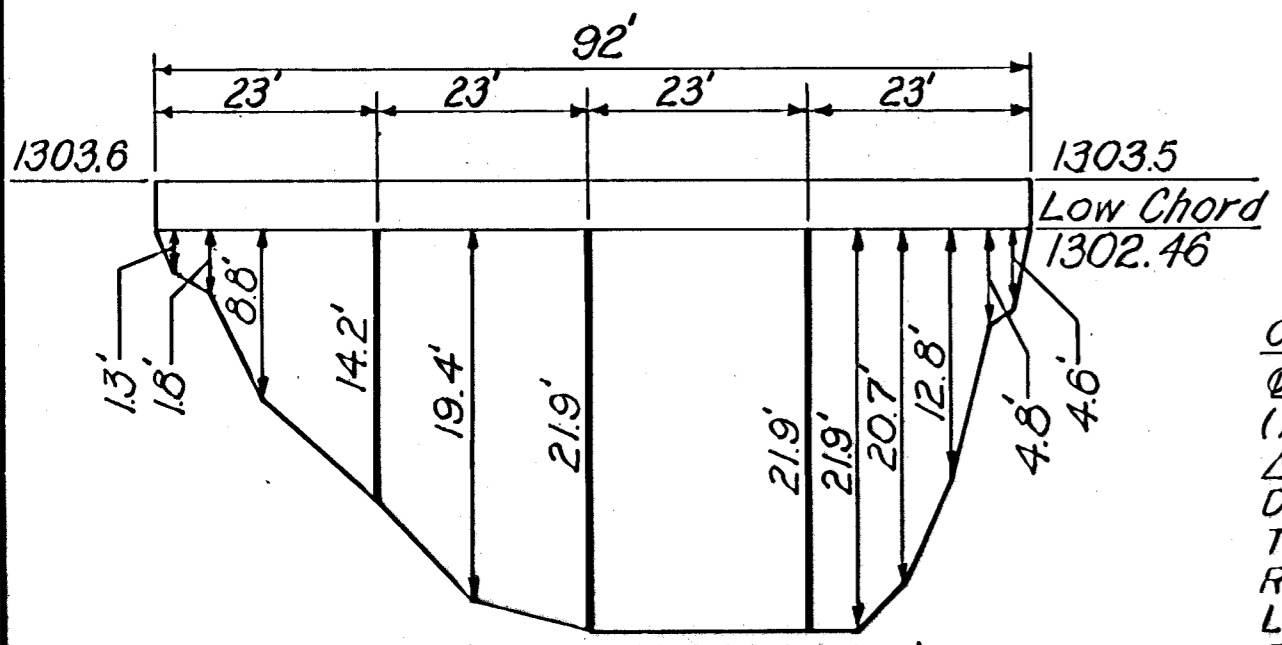


CURVE DATA
 @ Project
 (Arc Def.)
 $\Delta = 11^{\circ}08'53''$
 $D = 3^{\circ}59'57''$
 $T = 139.82'$
 $R = 1432.69'$
 $L = 278.76'$
 $E = 6.81'$

PC. Sta. 20+63.31
 1. Steel Nail & Washer @ P.C.
 2. Nail & Tin in 100" Tree 39.68' ENE
 3. Nail & Tin in 70" Tree 72.85' SE
 4. Nail & Tin in 60" Tree 73.50' WSW

CURVE DATA
 @ Channel
 (Arc Def.)
 $\Delta = 10^{\circ}16'35''$
 $D = 6^{\circ}30'00''$
 $R = 881.47'$
 $T = 79.26'$
 $L = 158.10'$

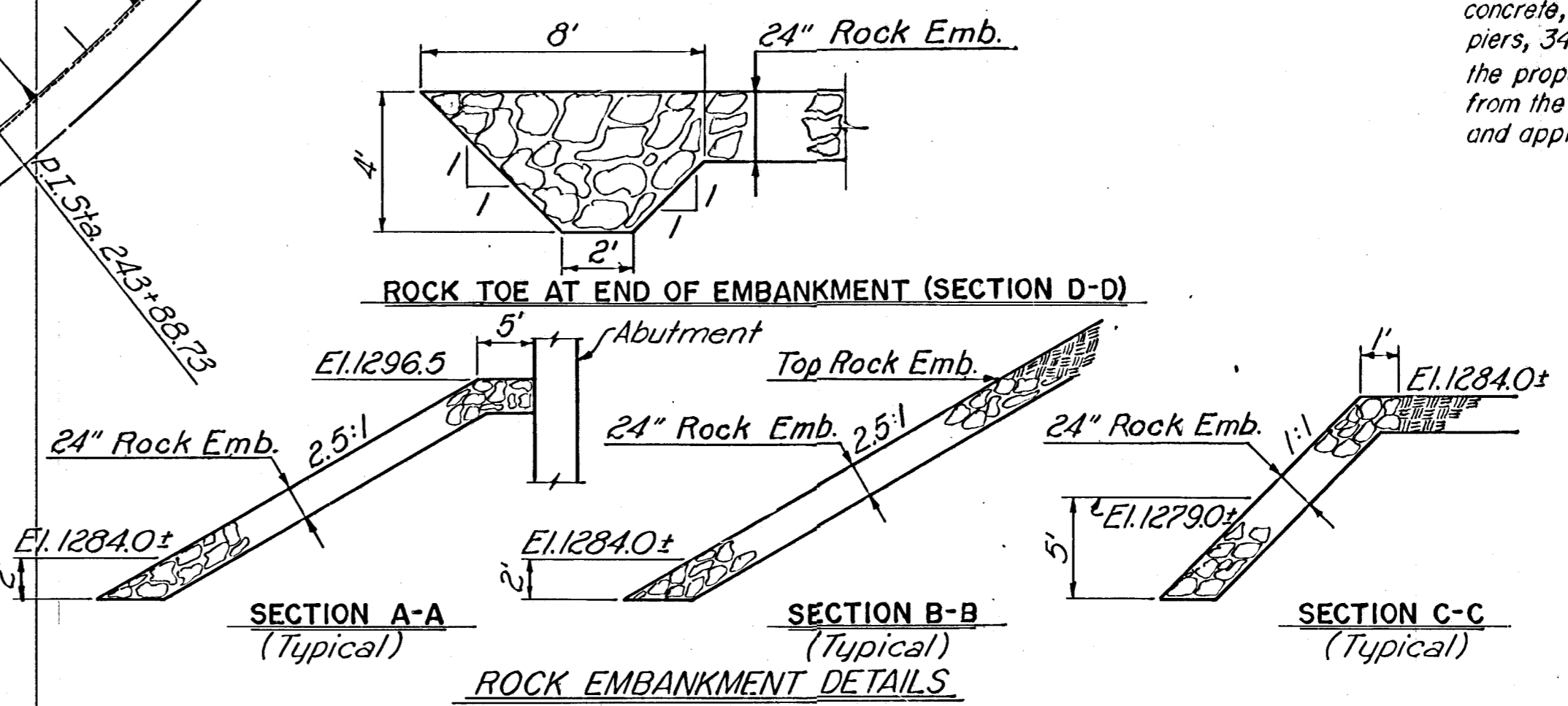
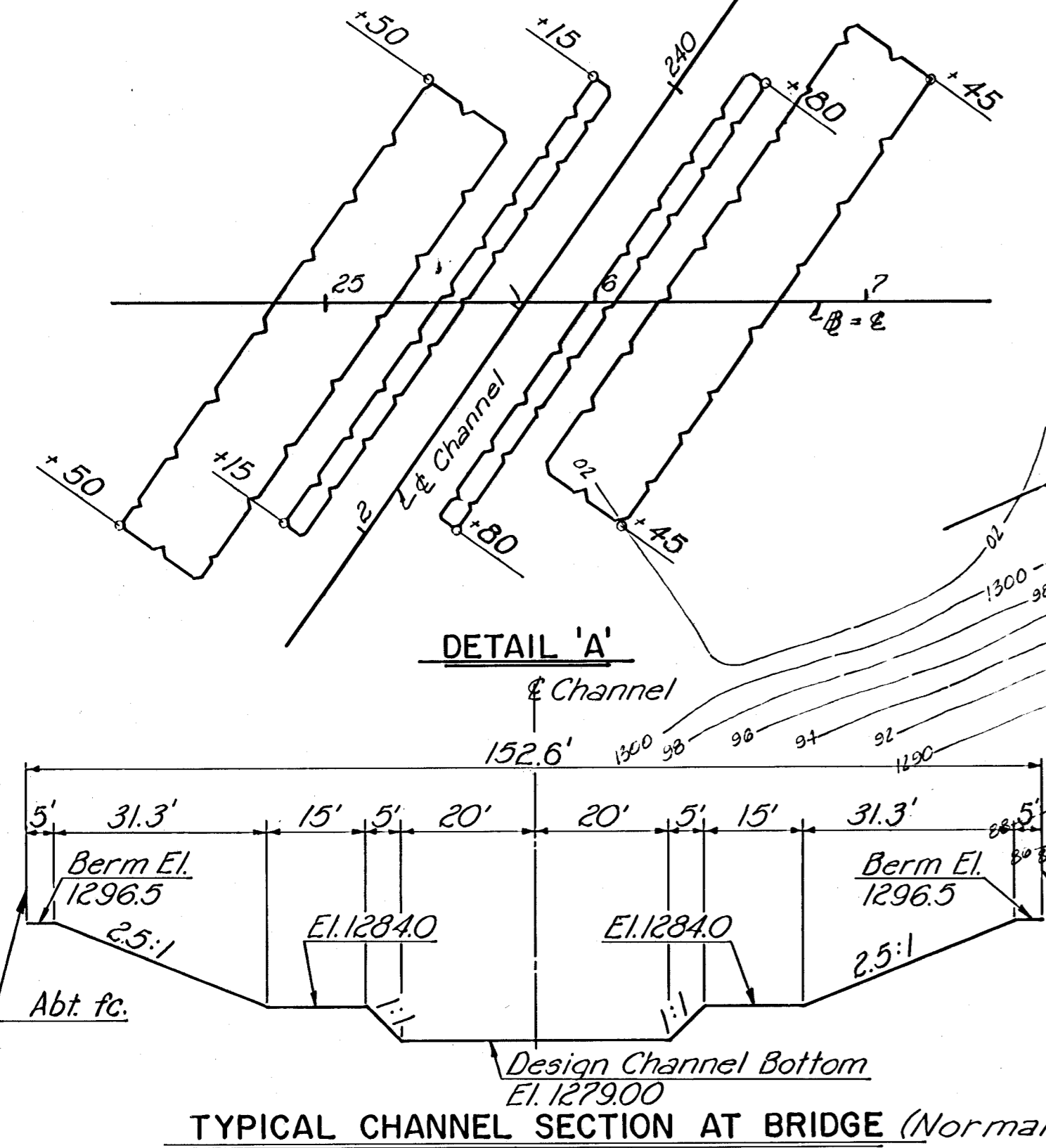
Const. 24" Rock Embankment to the Limits shown (1745.2 C.Y.)
 See Detail 'A' and Rock Embankment Details this sheet.



CURVE DATA
 @ Channel
 (Arc Def.)
 $\Delta = 31^{\circ}00'05''$
 $D = 10^{\circ}00'00''$
 $R = 572.96'$
 $T = 158.90'$
 $L = 310.02'$

Sta. 25+75 Construct
 60'-70'-60' Continuous Prestressed
 Concrete Girder Spans, Pile Bent
 Type Abutments, Drilled Shaft Type Piers.
 18'-0" Roadway, 35' Skew Rt.
 2'-6'-0" Walkways.

NOTE:
REMOVAL OF EXISTING STRUCTURE:
 The contractor shall remove Existing Bridge (STR. NO. 4304008768/0010) consisting of 4 @ 23' reinforced concrete, flat slab spans, pedestal type abutments and piers, 34' roadway. All material removed shall become the property of the contractor and shall be removed from the site to a location furnished by the contractor and approved by the Engineer.



SURV. J.G./M.C. PLOT. DES. T.P. DR. G.R.B./G.B. TR. CHD. R.G./A.H. APP. S.K.B.

CITY OF WICHITA
 GEORGE WASHINGTON BLVD. BRIDGE
 OVER GYPSUM CREEK
CONTOUR MAP
 CITY OF WICHITA PROJ. NO. 472-82156
Booker ASSOCIATES INC.
 OF KANSAS
 Wichita, Kansas
 SCALE _____ DATE June, 1992 DWG. NO. K-9331