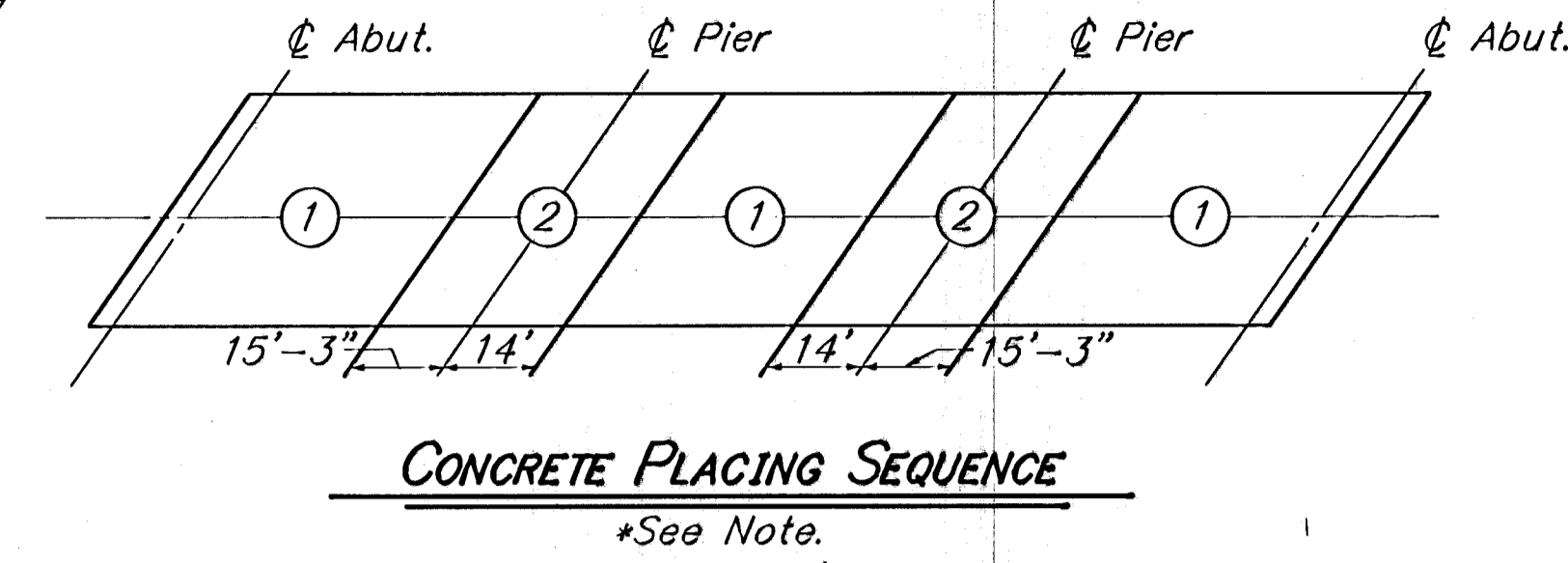
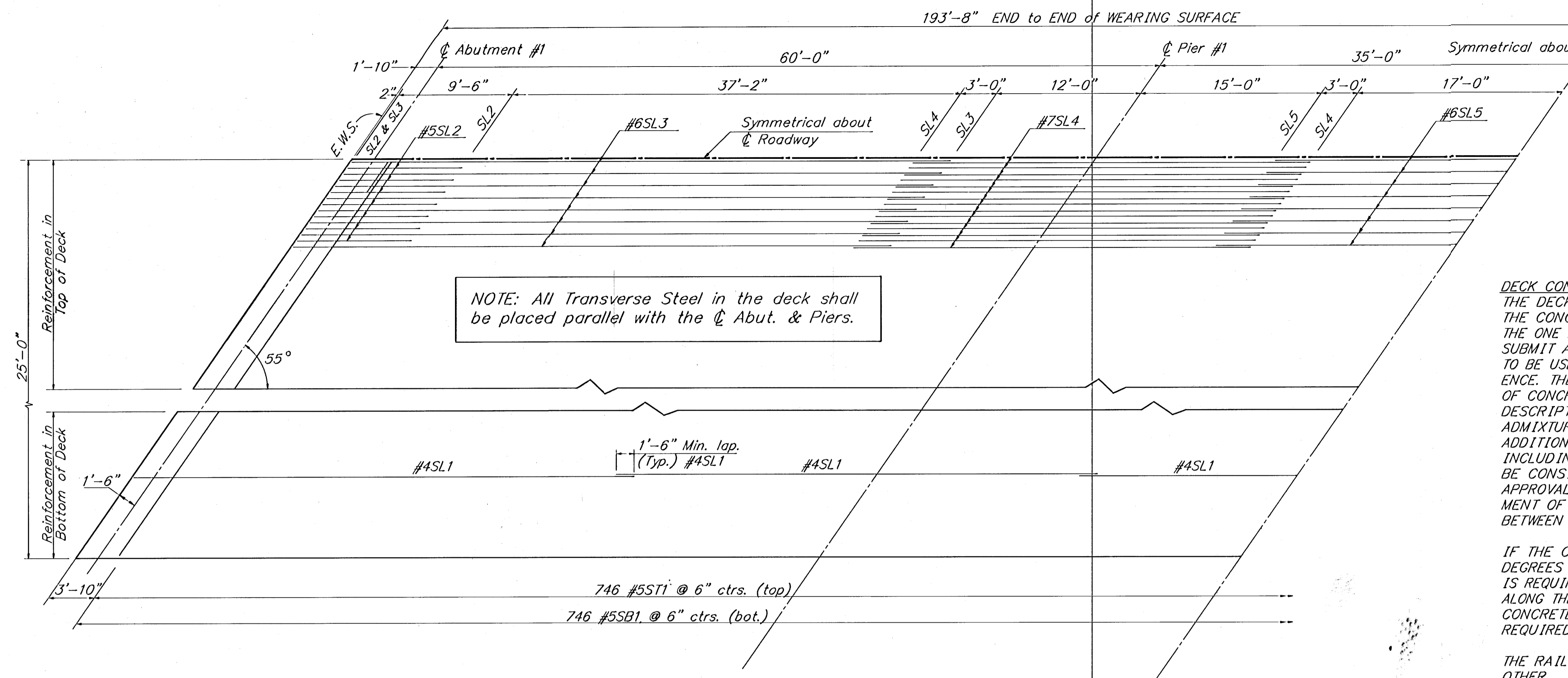


FHWA REGION NO.	STATE	PROJECT NO.	YEAR	SHEET NO.	TOTAL SHEETS
7	KANSAS	87U-1247-01	1992	33	79



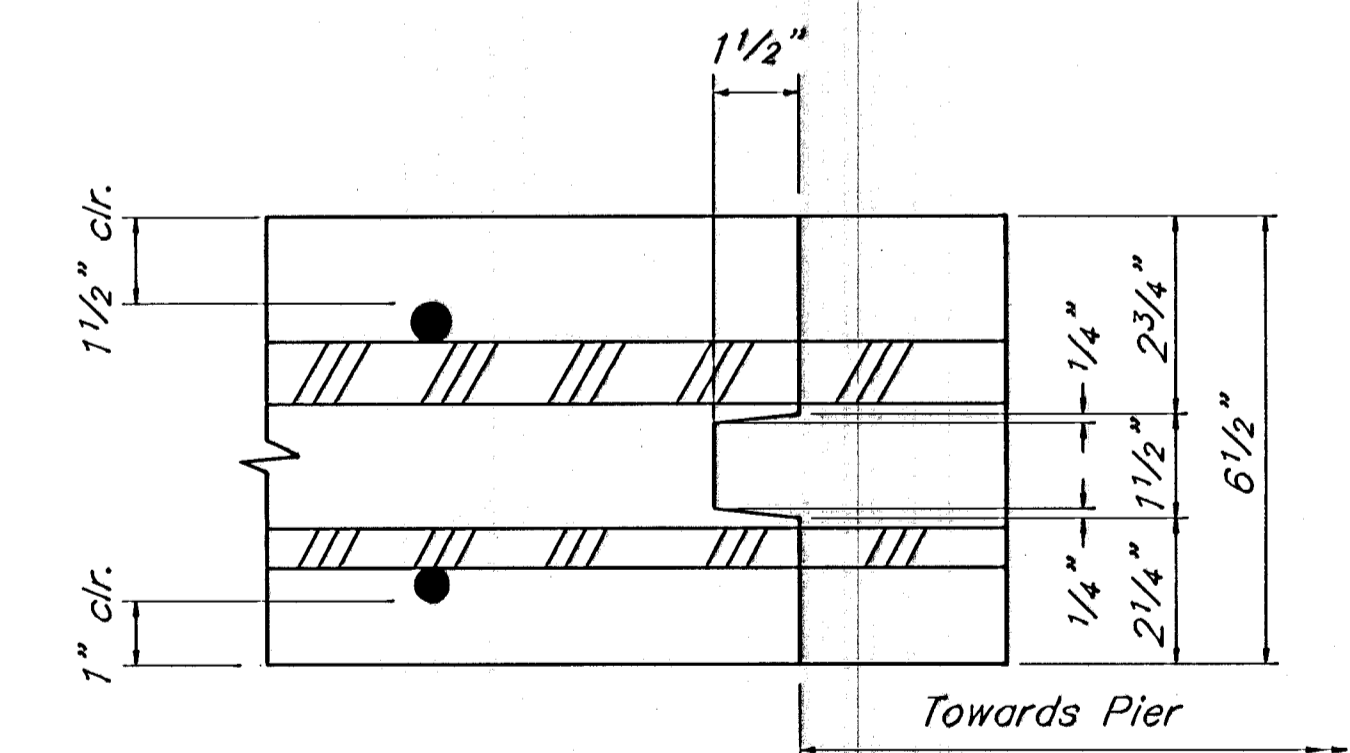
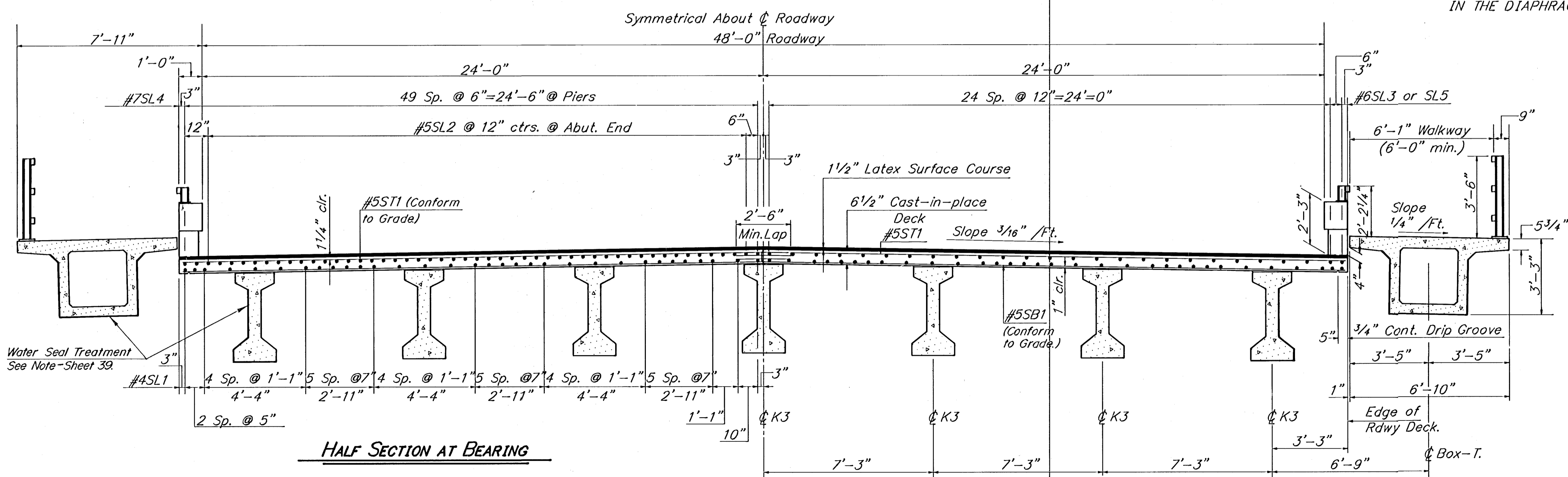
DECK CONCRETE PLACEMENT:
THE DECK SHALL BE POURED AT A MINIMUM RATE OF 50 C.Y. PER HOUR. IF THE CONCRETE PLACING SEQUENCE TO BE USED FOR THE SLAB IS OTHER THAN THE ONE AS SHOWN IN THE CONCRETE PLACING DIAGRAM, THE CONTRACTOR SHALL SUBMIT AN ALTERNATE PLACING SEQUENCE FOR REVIEW. THE PLACING SEQUENCE TO BE USED SHALL BE GIVEN TO THE ENGINEER AT THE PRECONSTRUCTION CONFERENCE. THE PLACING SEQUENCE TO BE USED SHALL INCLUDE THE PROPOSED RATE OF CONCRETE PLACEMENT IN CUBIC YARDS PER HOUR, THE PLANT CAPACITY, A DESCRIPTION OF THE EQUIPMENT USED IN PLACING THE CONCRETE, PROPOSED ADMIXTURES, AND THE QUANTITY OF CONCRETE IN EACH PLACING SEGMENT. ANY ADDITIONAL COST FOR THE CONTRACTOR'S ALTERNATE PLAN OF PLACING CONCRETE, INCLUDING ADMIXTURES, SHALL BE AT THE CONTRACTOR'S EXPENSE AND SHALL BE CONSIDERED SUBSIDIARY TO THE BID ITEM, "CLASS AAA CONCRETE (AE)". APPROVAL OF THE CONTRACTOR'S PLACING SEQUENCE IS REQUIRED BEFORE PLACEMENT OF CONCRETE IN THE DECK. THERE WILL BE A MINIMUM OF THREE DAYS BETWEEN THE LAST SLAB POUR AND THE FIRST RAIL POUR.

IF THE CONTRACTOR DESIRES TO SCREED THE ENTIRE ROADWAY WIDTH AT 90 DEGREES (INSTEAD OF ALONG THE SKEW), IT IS ACCEPTABLE TO DO SO BUT IT IS REQUIRED THAT CONCRETE PLACEMENT AHEAD OF THE SCREED SHOULD TAKE PLACE ALONG THE SKEW INSTEAD OF PARALLEL TO THE SCREED. THIS MAY REQUIRE PLACING CONCRETE SOME LENGTH AHEAD OF THE SCREED AND A SET RETARDER MAY BE REQUIRED. DETAILS SHALL BE INCLUDED IN THE ALTERNATE PLACING SEQUENCE.

THE RAIL MAY BE PLACED CONTINUOUSLY FROM ONE END OF THE BRIDGE TO THE OTHER.

ALL CONCRETE FOR THE PIER DIAPHRAGMS AND THE ABUTMENT ABOVE THE BRIDGE SEATS SHALL BE PLACED AND HAND VIBRATED TO THE BOTTOM OF DECK ELEVATION JUST PRIOR TO THE NORMAL PAVING TRAIN OPERATIONS. THE WORK SHALL BE ACCOMPLISHED IN A MANNER TO AVOID COLD JOINTS IN EITHER THE SLAB OR IN THE DIAPHRAGMS.

HALF SLAB PLAN



TRANSVERSE SLAB CONT. JT.

See Sheet 24 for General Notes.
See Sheet 43 for Bar List and Bending Diagram.

HALF SECTION AT BEARING

TYPICAL ROADWAY SECTION
(Normal to ϕ of Structure)

HALF SECTION AT MID-SPAN

NOTE: Adjust Fillet over Girders as required to compensate for final camber in Girders.

SURV. - PLOT CAD. DES. R.G./A.H. DR. G.B. TR. - CKD. R.G. APP. S.K.B.

CITY OF WICHITA

GEORGE WASHINGTON BLVD. BRIDGE
OVER GYSUM CREEK
SUPERSTRUCTURE LAYOUT

CITY OF WICHITA PROJECT NO.: 472-82156

Booker ASSOCIATES INC.
OF KANSAS
Wichita Kansas

SCALE — DATE *June, 1992* DWG. NO. *K9331*