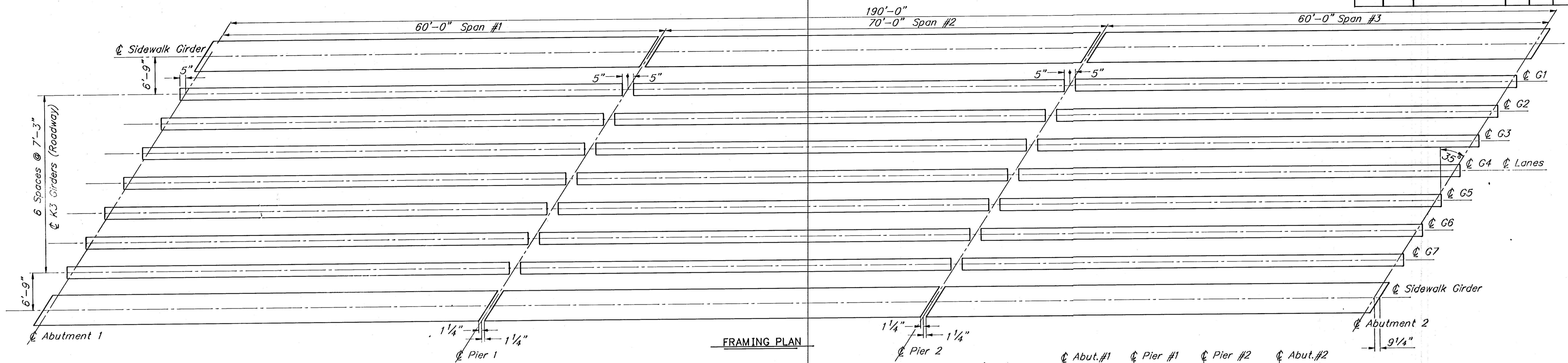
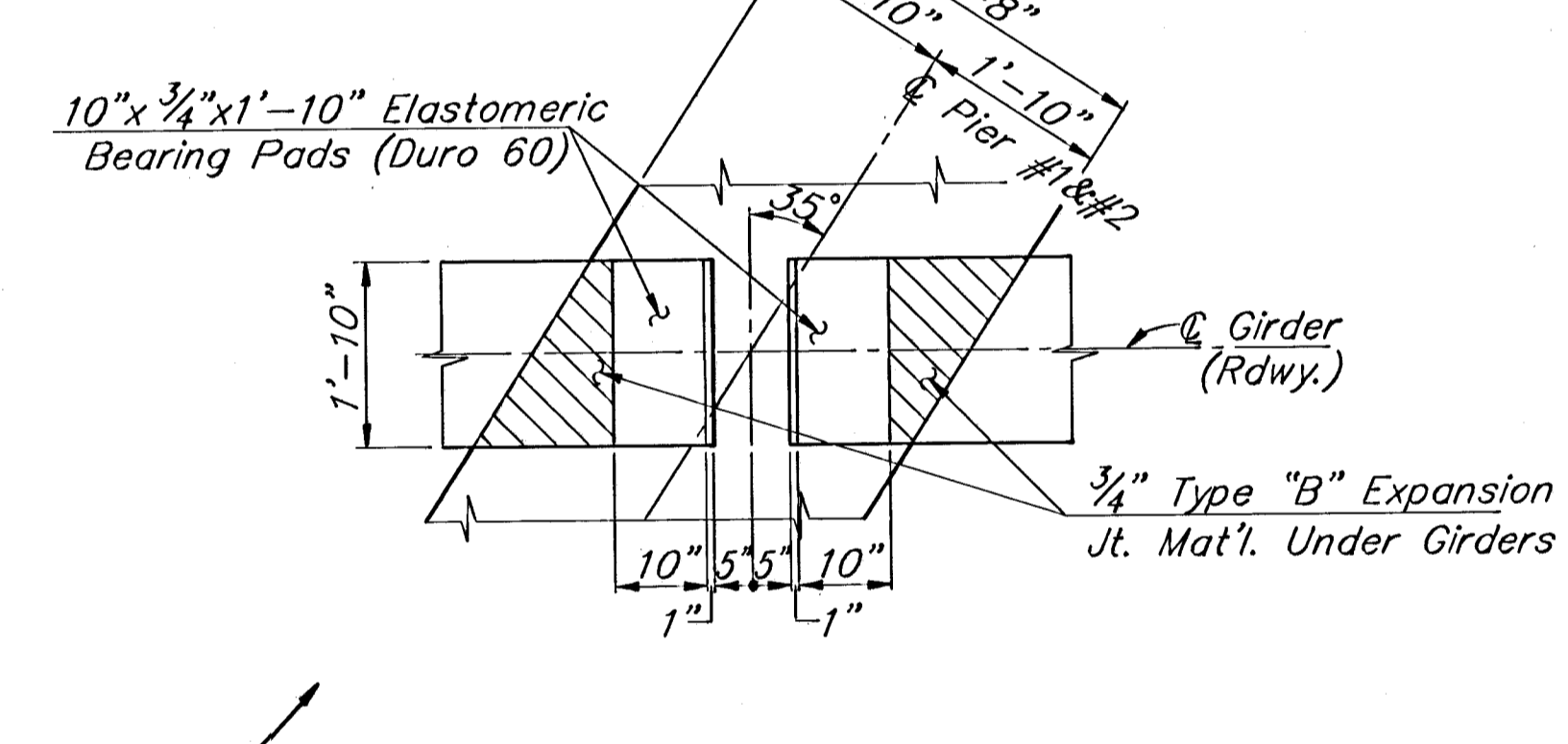
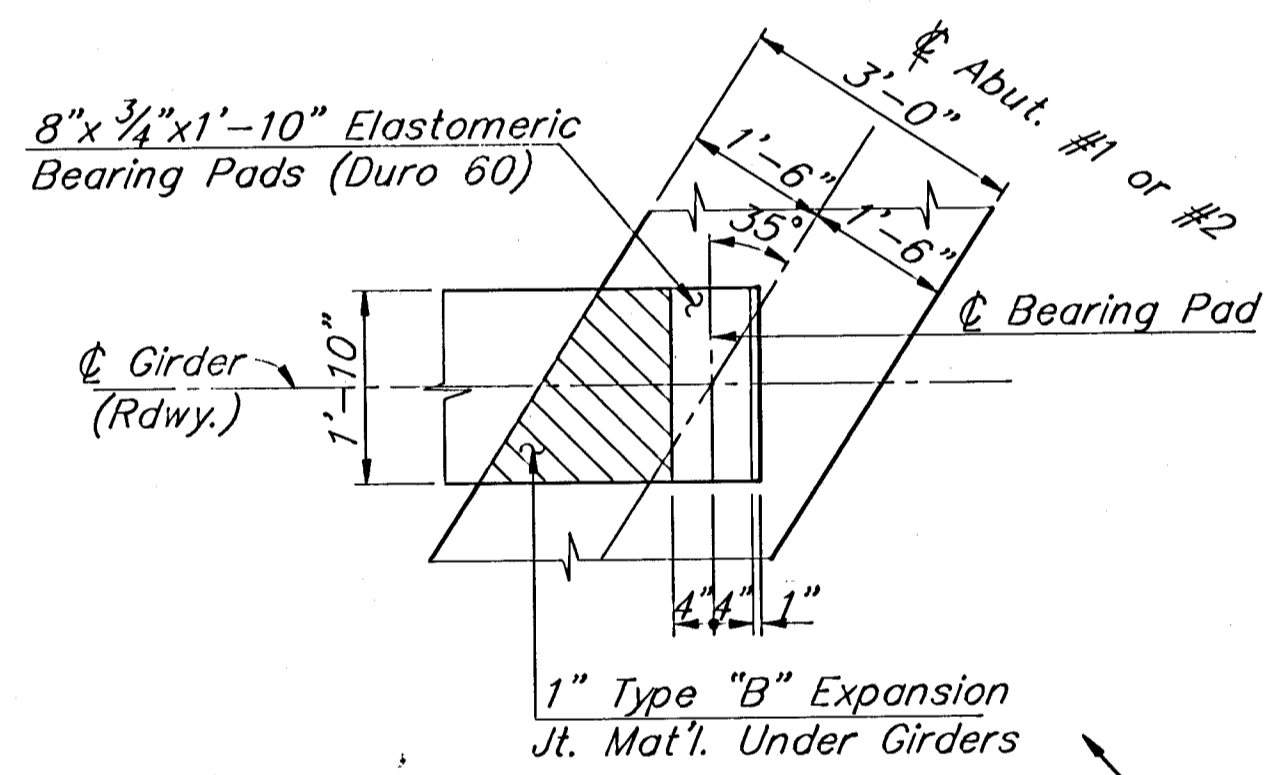


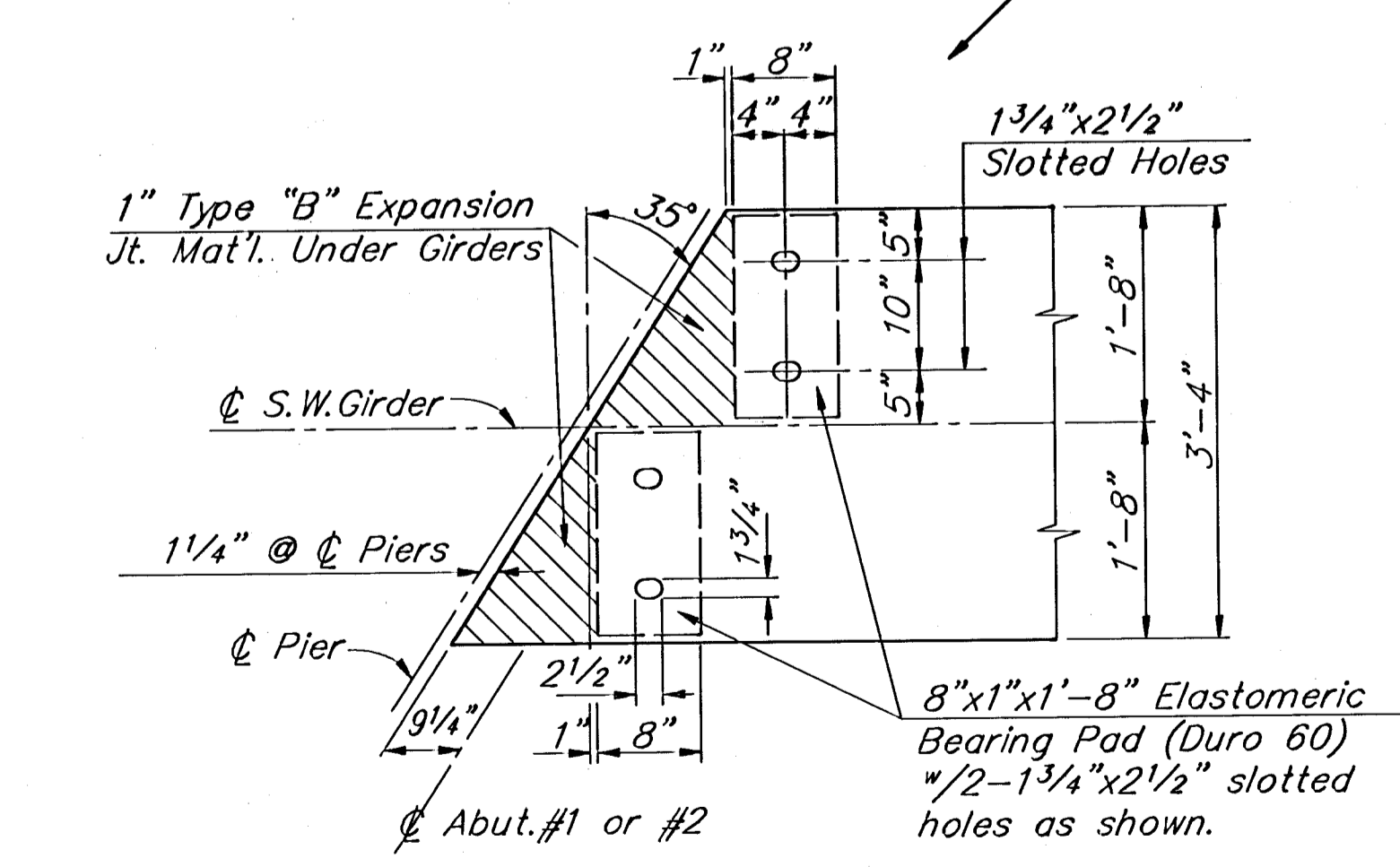
FHWA REGION NO.	STATE	PROJECT NO.	YEAR	SHEET NO.	TOTAL SHEETS
7	KANSAS	87U-1247-01	1992	34	70



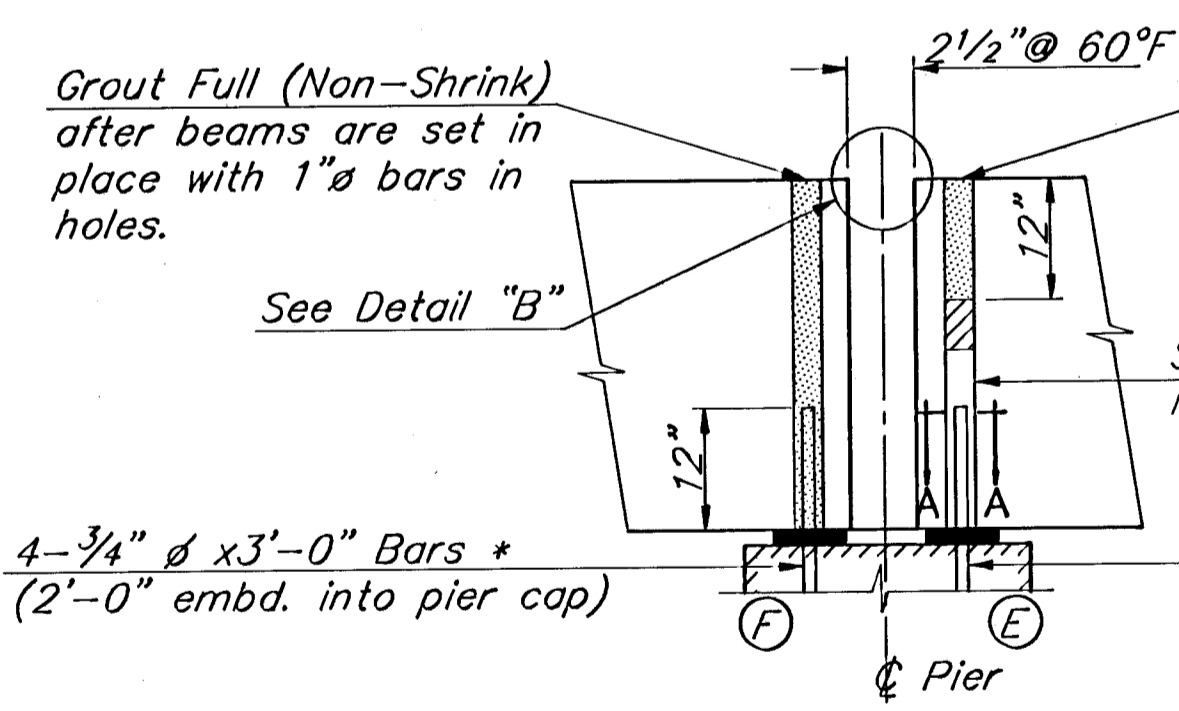
FRAMING PLAN



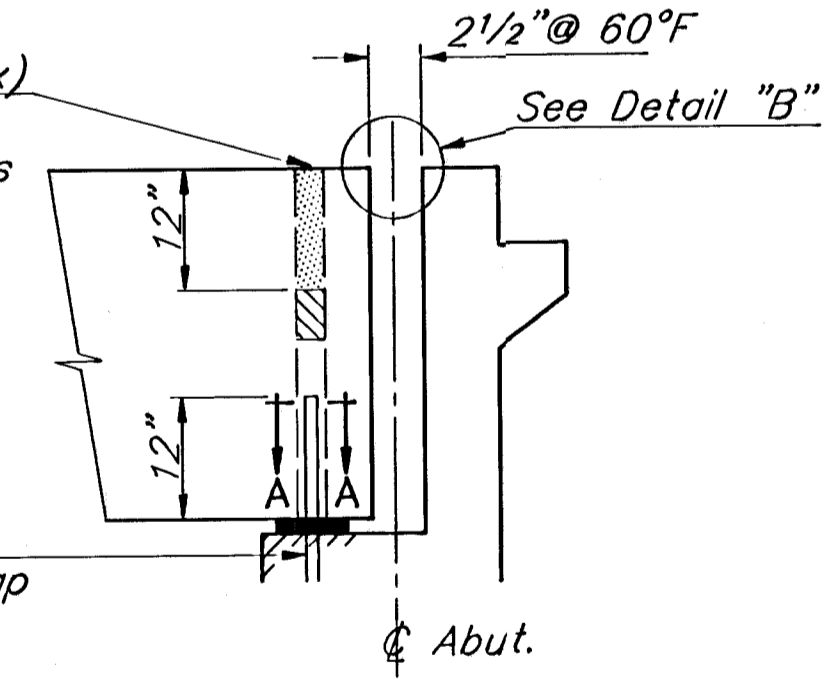
BEARING PAD DETAILS



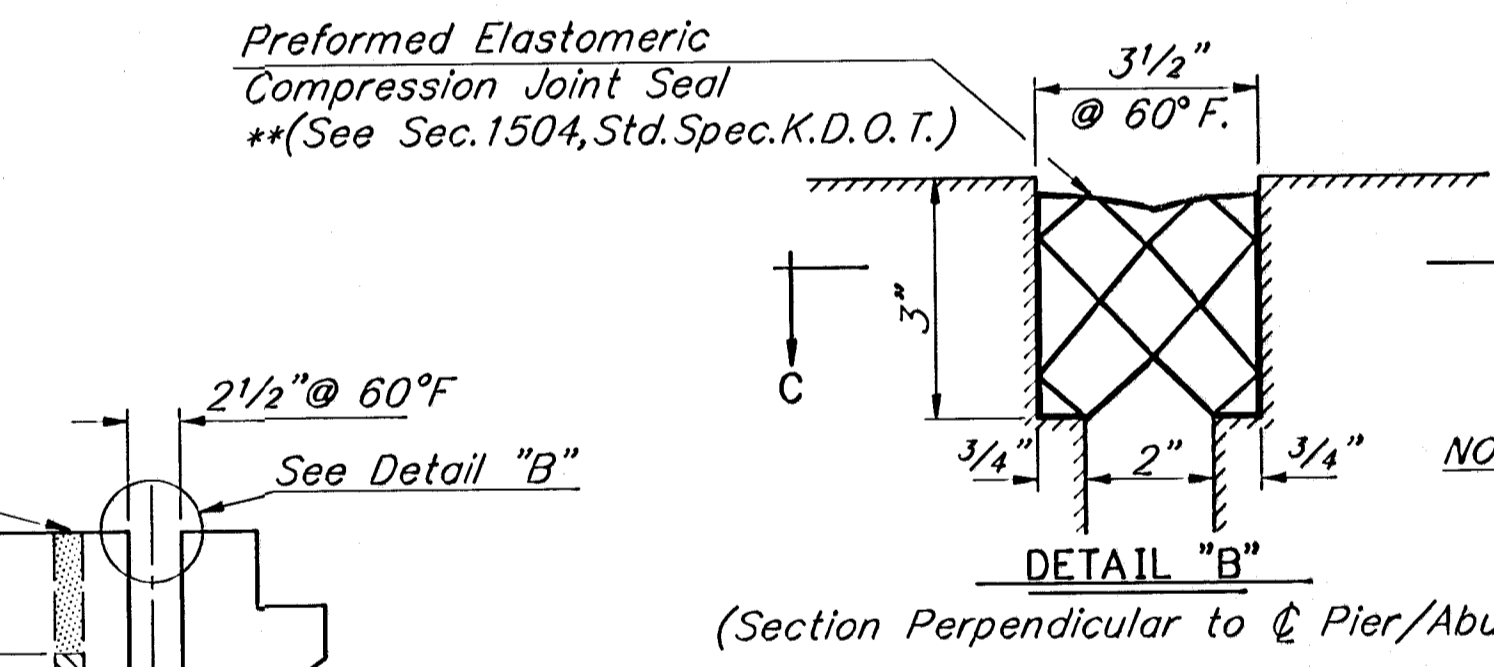
FIXED SIDEWALK BEARING



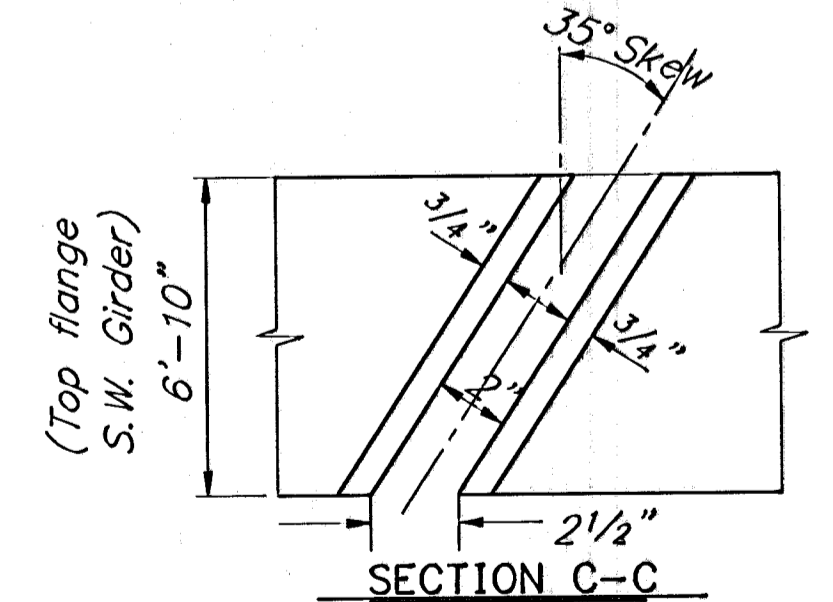
DETAIL "A"



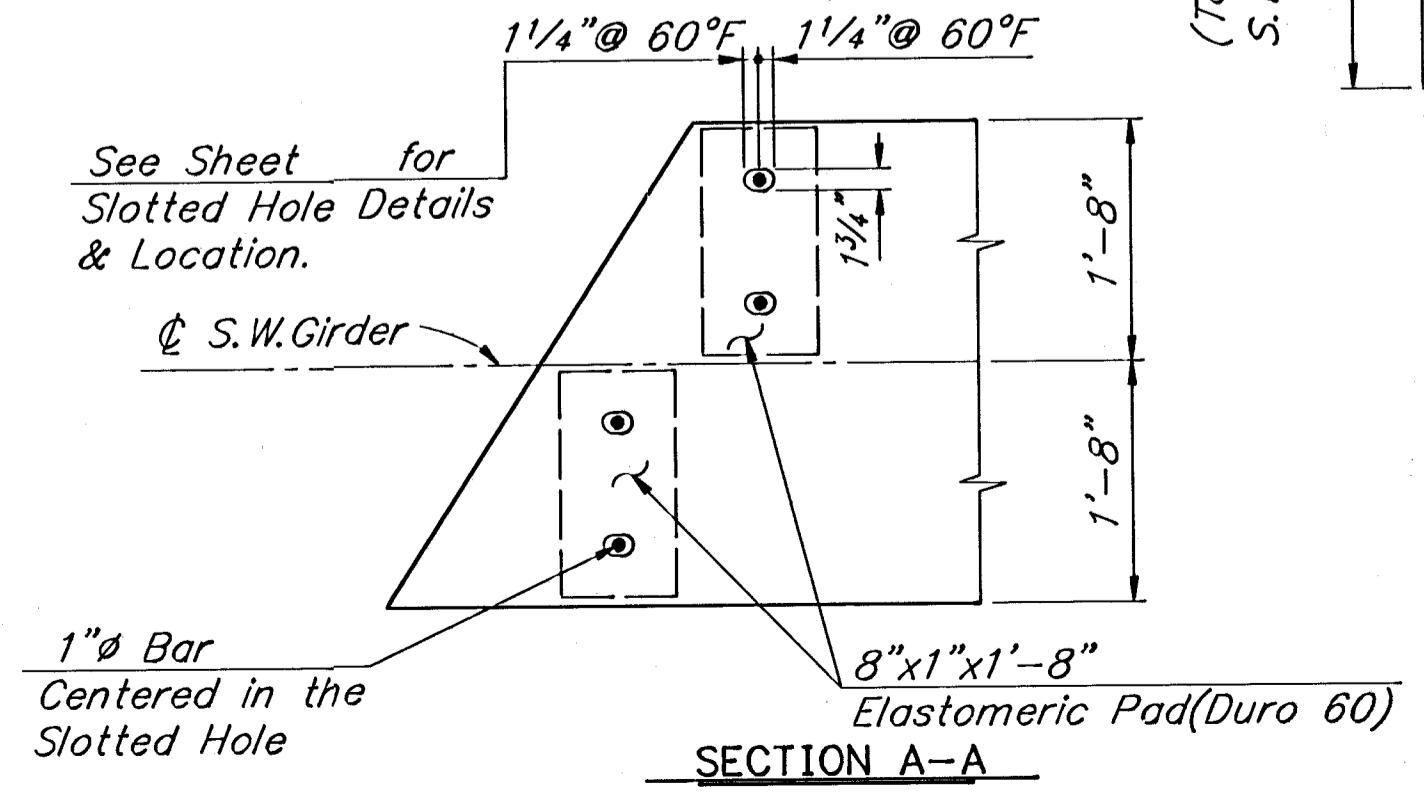
DETAIL "B"
(Section Perpendicular to S.W. Girder)



EXPANSION/FIXED CONDITIONS FOR SIDEWALK GIRDERS
LEGEND: E-expansion end of beam (See Detail "A")
F-fixed end of beam (See Detail "A")



SECTION C-C



SECTION A-A

** The seal shall have total movement capability of 1"; maximum width capability shall be 4"; minimum width capability shall be 3". Contractor to coordinate this work with prestressed beam manufacturer regarding beam recess dimensions.
NOTE: Compression Seal shall be subsidiary to the bid item "Class AAA Conc. (AE)" (67 lin. ft. required.)

NOTE: The distance between slotted holes in a beam and its corresponding span (pier to pier) shall be measured in the field in order to match the holes and bars as shown in Detail "A" and section A-A; The location of the 1" dia bars shall be marked for the above described condition, drilled and grouted. The beams shall be set with bars as shown in Detail "A" and Section A-A. All work shown in Detail "A" including furnishing all material, equipment and labor necessary to complete the work shall be subsidiary to the bid item "Prestressed Concrete Beams (Box-T)."

See Bridge Construction Sequencing for erection of sidewalk girders.

CITY OF WICHITA
GEORGE WASHINGTON BLVD. BRIDGE
OVER GYPSUM CREEK
GIRDER LAYOUT
CITY OF WICHITA PROJ. NO.: 472-82156
Booker ASSOCIATES INC. OF KANSAS
Wichita Kansas
SCALE _____ DATE June, 1992 DWG. NO. K9331BR

SURV. PLOT CAD D. DES. R.G./A.H. DR. R.S.B. TR. CKD. R.G. APP. S.K.B.

K9331BR/GIRDLAY
SCALE 1"=1/8"(8')