

FHWA REGION NO.	STATE	PROJECT NO.	YEAR	SHEET NO.	TOTAL SHEETS
7	KANSAS	87U-1247-01	1992	44	79

**GENERAL NOTES**

**ABUTMENT STRIP DRAIN:** The Bridge Contractor shall excavate to the limits shown on the Bridge Excavation sheet, grade the bottom of the backfill area, place the strip drain, and place the perforated pipe, the outlet pipe, the CMP, and the backfill. Guide post and coarse aggregate are subsidiary to this bid item. Guide post and coarse aggregate are not required if the CMP empties onto riprap.

**COAL-TAR MEMBRANE PROTECTIVE COAT:** The Bridge Contractor shall coat the earth side of the wingwalls and the abutment backwalls to the limits shown with a coal-tar membrane protective coat in accordance with the KDOT Specifications. This work shall be completed by the Contractor immediately after the abutment concrete has cured and prior to backfilling. Any damage done to the Coal-Tar Membrane shall be repaired at no extra cost to the State.

Perforated pipe shall be placed next to the strip drain. Outside the limits of the strip drain, non-perforated pipe shall be used. Care shall be taken to enclose the perforated pipe with the extension of the filter fabric.

Compaction shall be required at abutments. See KDOT Specifications.

The Abutment Strip Drain material shall meet the requirements of KDOT Specifications.

Perforated pipe and non-perforated outlet pipe shall be corrugated polyethylene tubing and shall meet the requirements of KDOT Specifications.

The CMP end section shall be fitted with a 1/4" galvanized mesh screen to prevent the entrance of rodents. The joint between the outlet pipe and end section shall be sealed with a Joint sealer. Coarse aggregate shall be placed at the outlet end as shown.

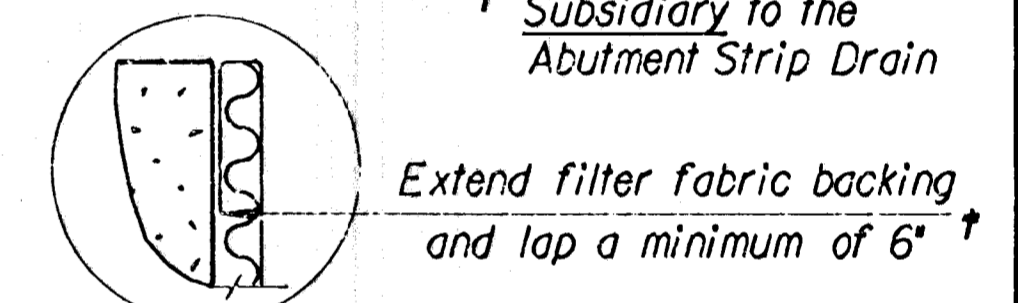
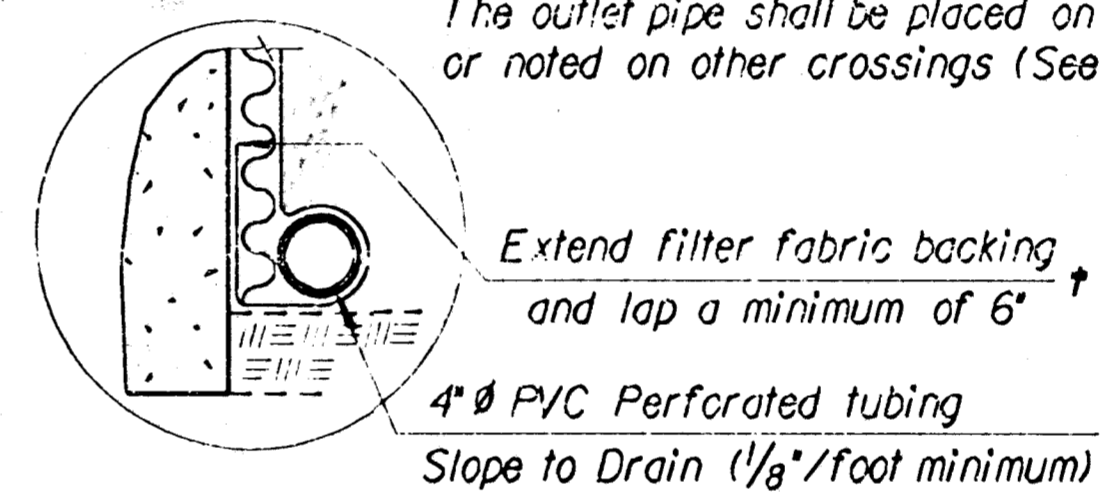
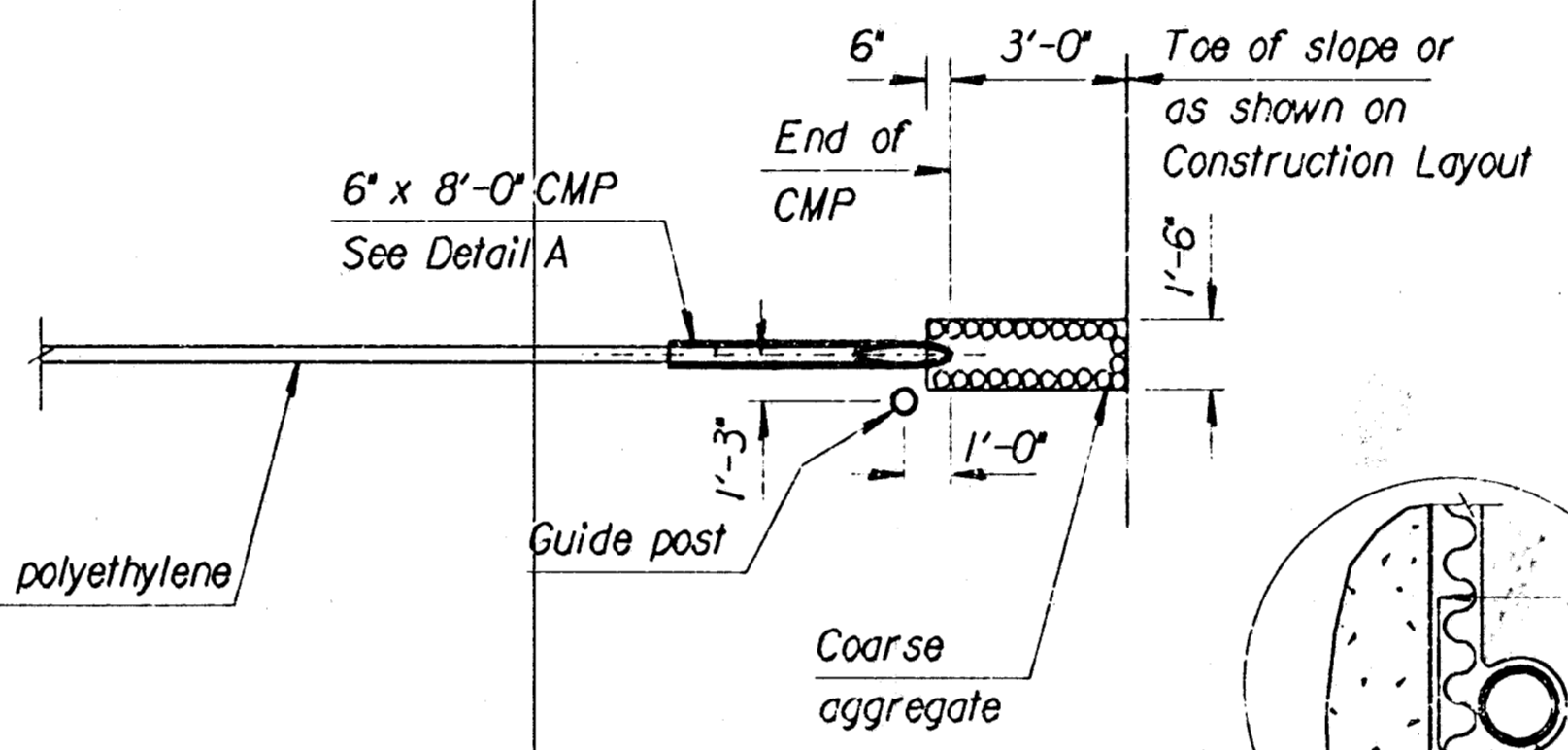
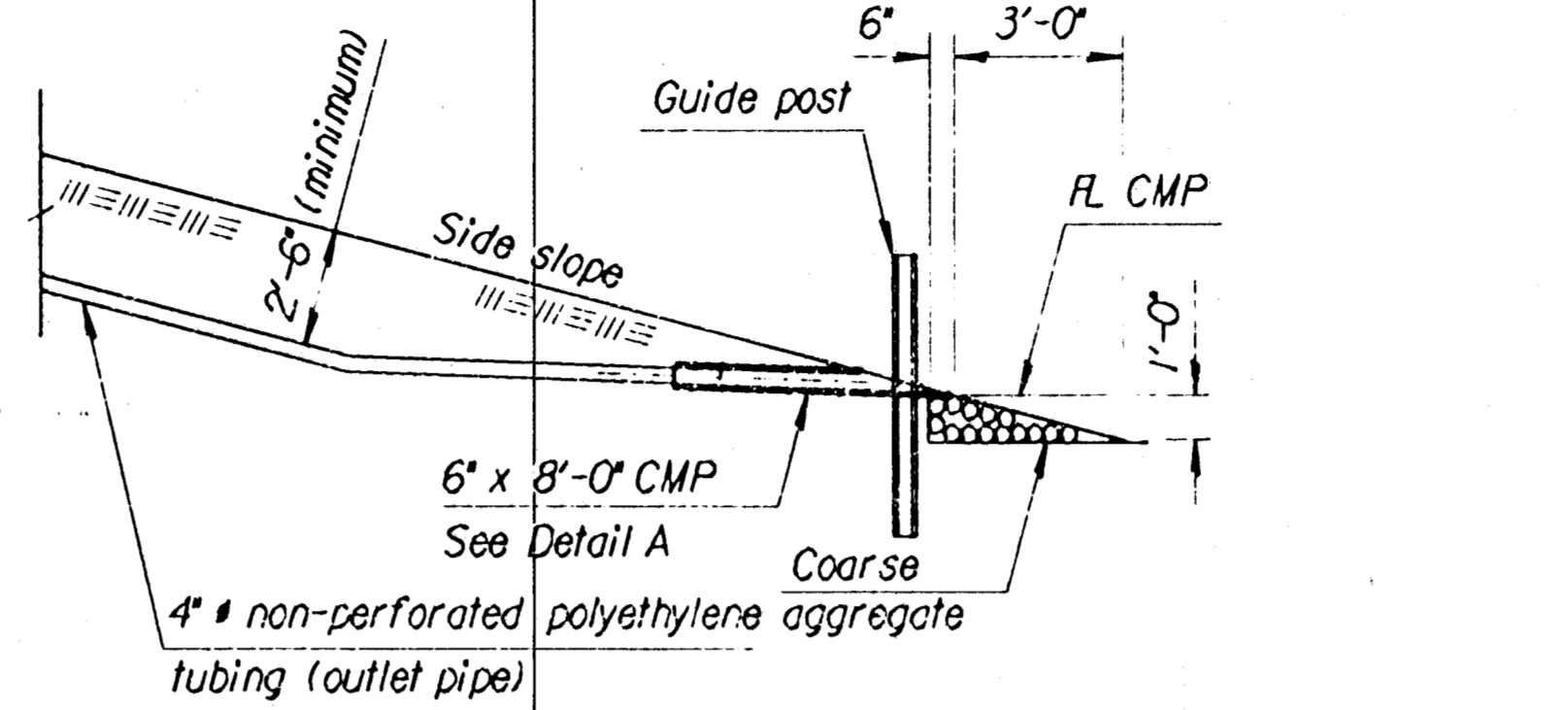
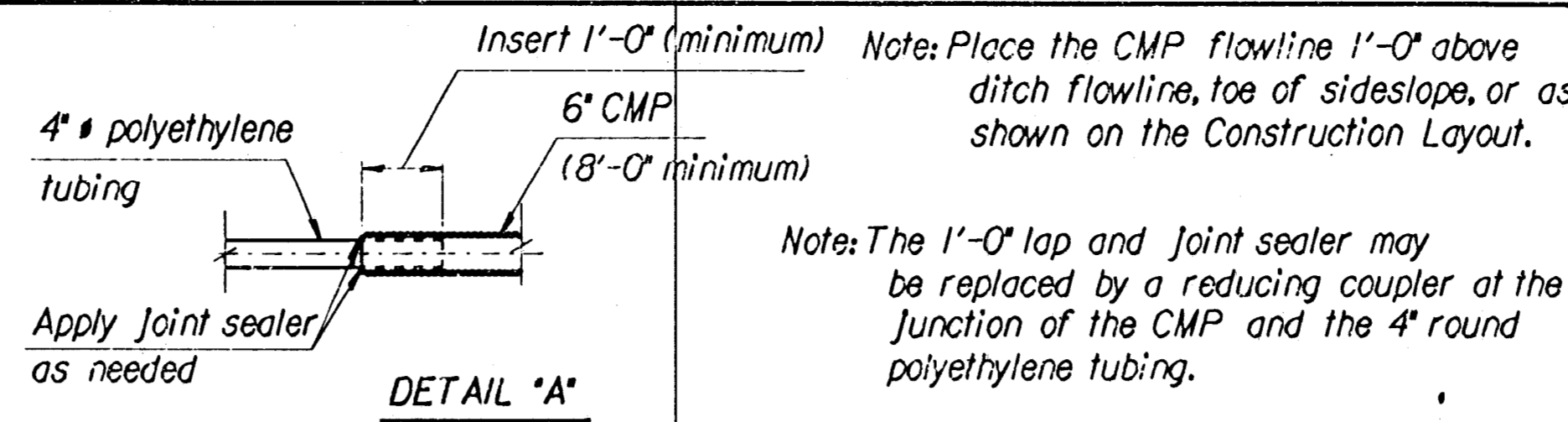
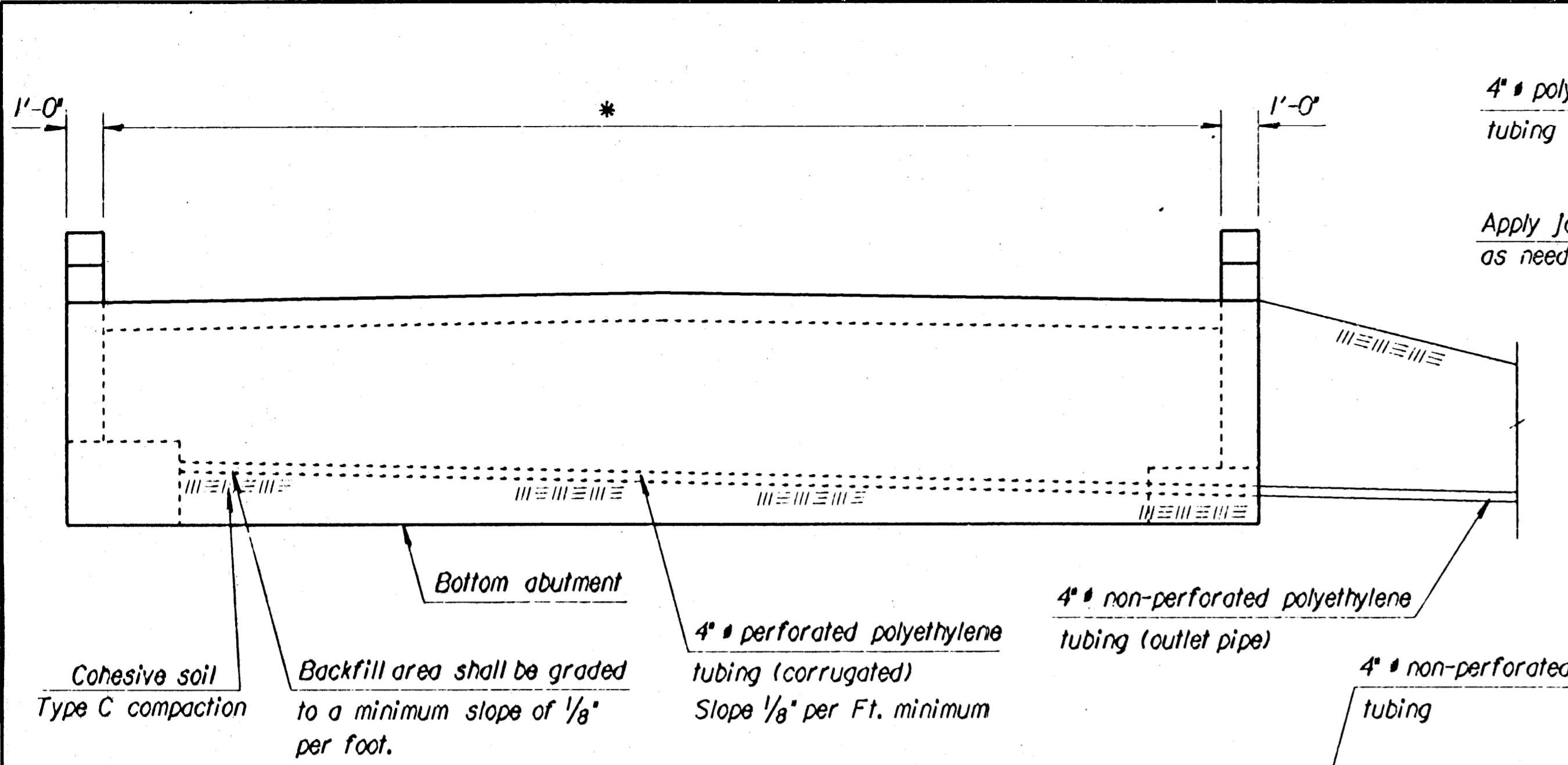
The bottom surface of the excavated area shall be graded to drain and backfilled with a cohesive type soil. The soil should be a silty clay or clay under the Kansas Classification System with a minimum plasticity index of 20. The material shall be compacted to conform to Type C compaction.

The outlet pipe shall be placed on the downstream side of structures over streams and as shown or noted on other crossings (See Construction Layout sheet).

† Subsidiary to the Abutment Strip Drain

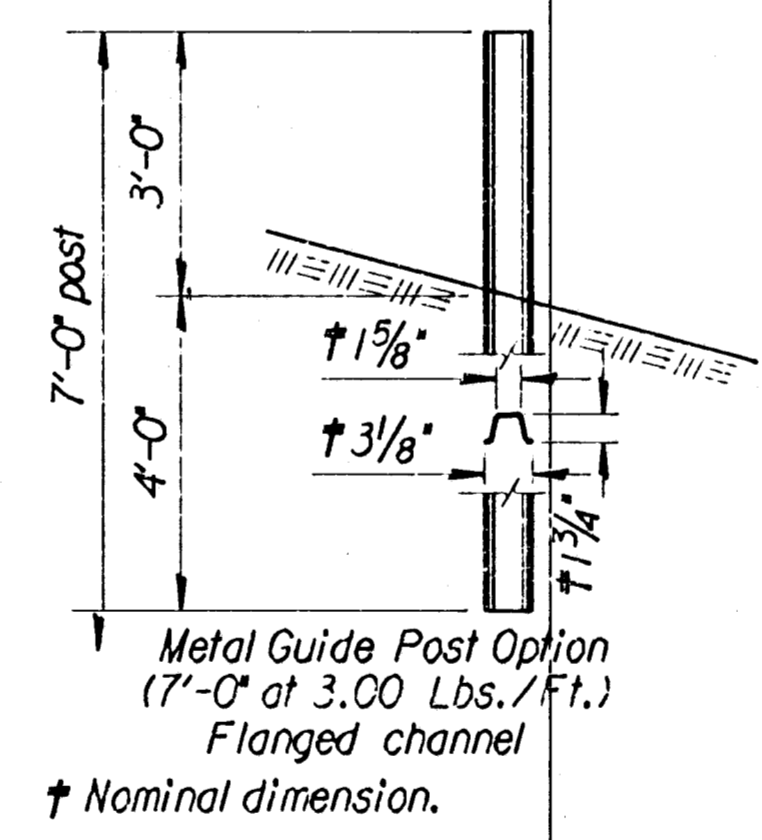
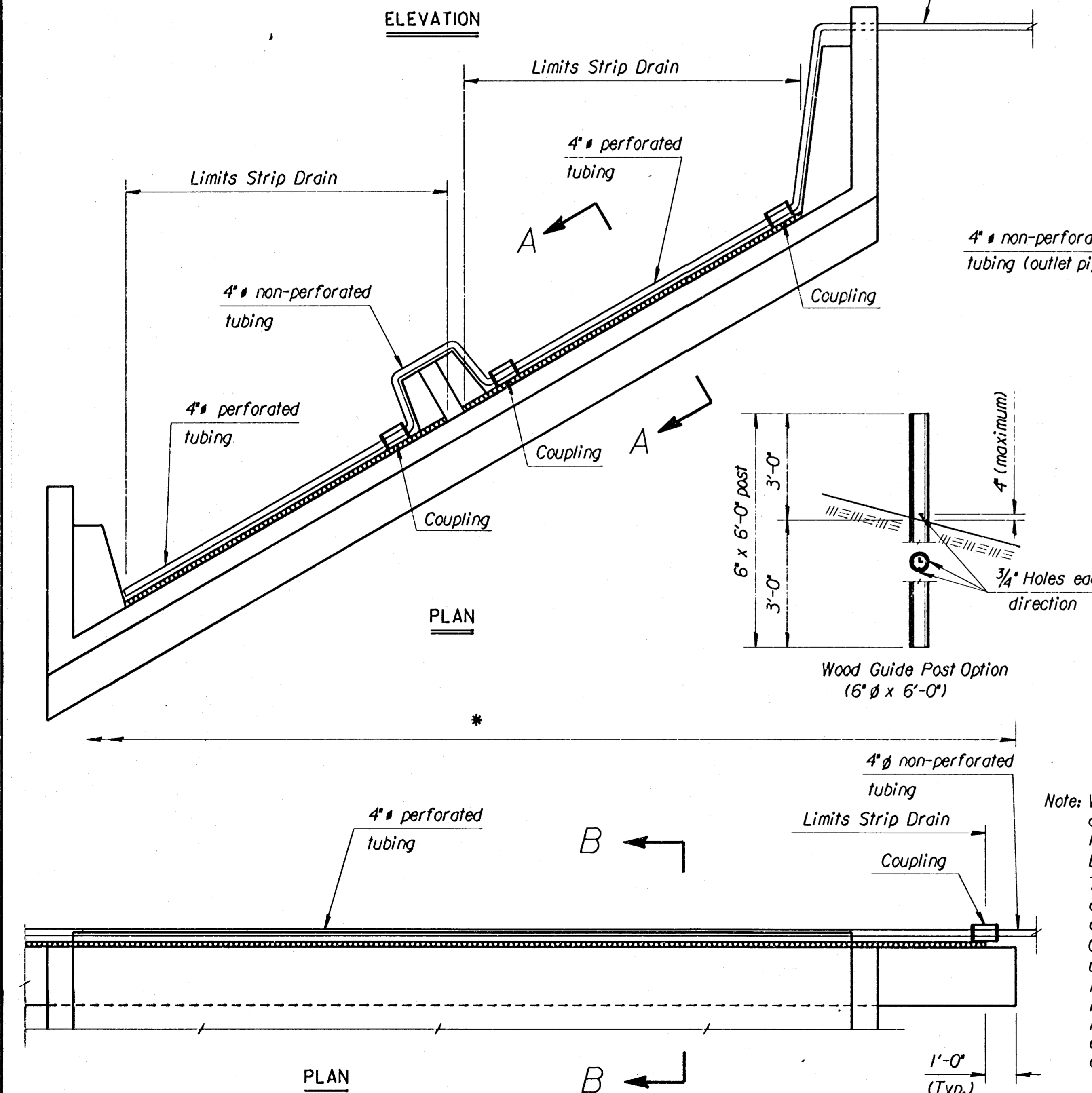
Extend filter fabric backing and lap a minimum of 6"

4" PVC Perforated tubing  
Slope to Drain (1/8"/foot minimum)



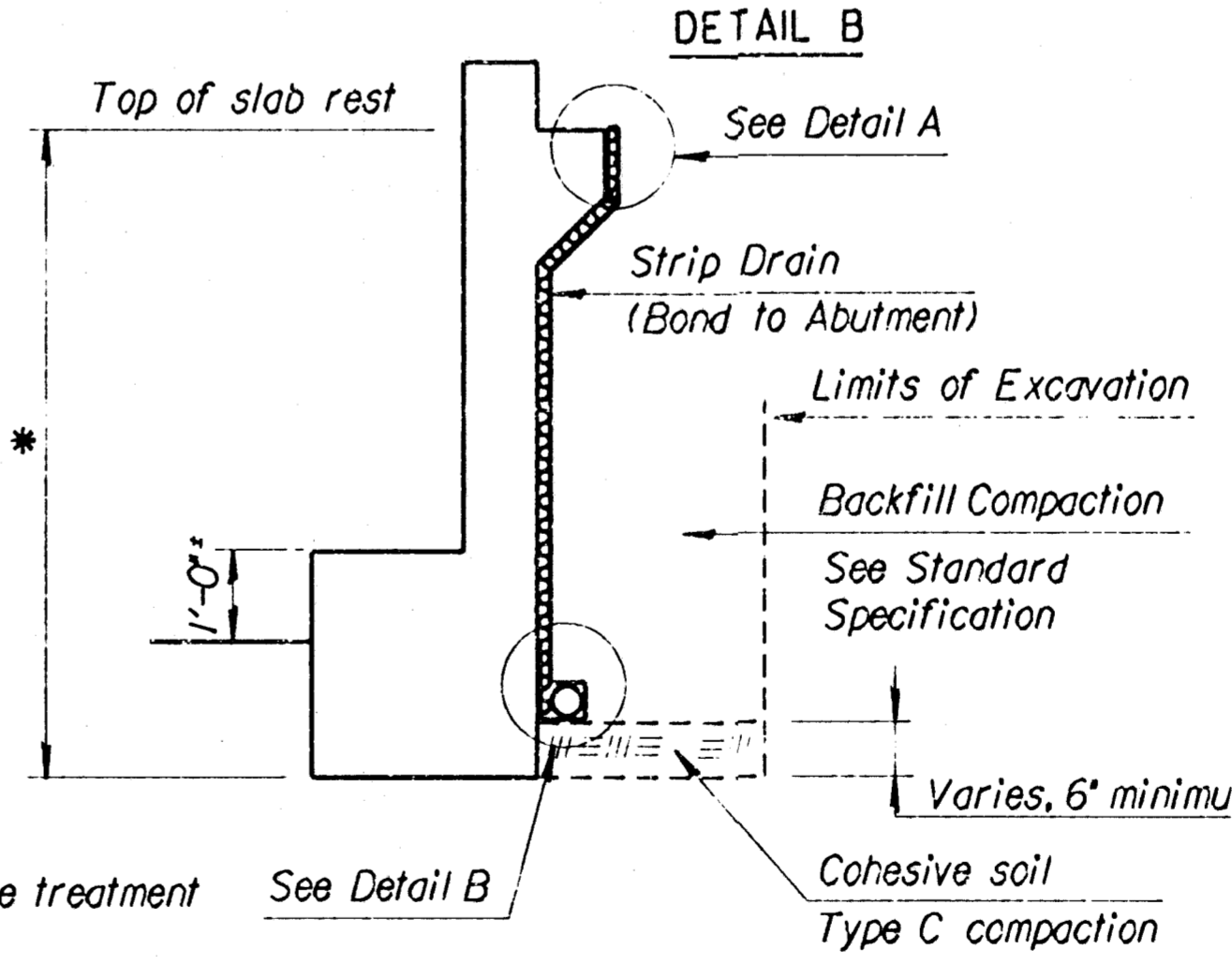
NO.	DATE	DESCRIPTION

Source File : /usr2/stand/102x00x00.dgn  
 Drawn By : cadd  
 DGN File : /usr2/stand/102x00x00.dgn  
 Plotted : 23-MAR-1992 08:59 View-PL01

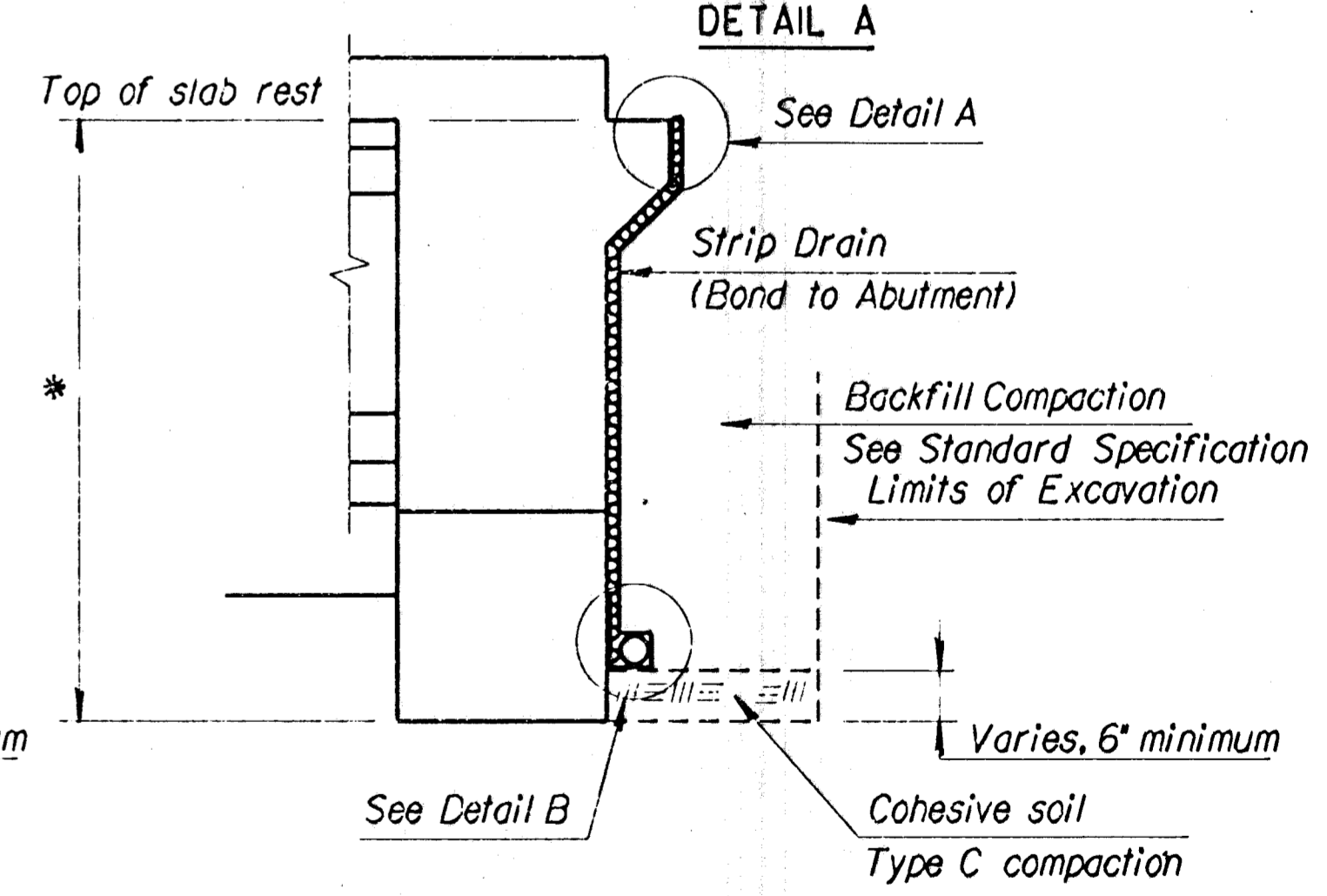


**GUIDE POST**

Note: Wood guide posts shall be given a preservative treatment as provided in the KDOT Specifications. ReflectORIZED material will be applied to the post by the State. The top 18" of the posts shall be given 2 coats of aluminum paint and the top 12" of the post shall be given one coat of International Orange Enamel paint. Only one type of preservative treatment may be used on a project. Metal guide posts shall meet the requirements of the KDOT Specifications. Metal post shall have a galvanized or baked enamel coating and the upper 12" of each post shall receive a coat of International Orange Enamel paint.



**SECTION A-A**



**SECTION B-B**

SUMMARY OF QUANTITIES	
Abutment Strip Drain	150 Sq. Yds.
Coal-Tar Membrane Protective Coat	200 Sq. Yds.
Items Subsidiary to Strip Drain	
4" Perforated Pipe	155 Lin. Ft.
4" Outlet Pipe	70 Lin. Ft.
6" CMP	16 Lin. Ft.

KANSAS DEPARTMENT OF TRANSPORTATION					
ABUTMENT STRIP DRAIN					
STD. NO. 102					
NO.	DATE	REVISIONS	BY	APP'D	
2	2-14-92	Expanded strip drain & CTM	LRR	KFH	
1	4-6-90	Add Steel Guide Post Option	LRR	KFH	

DESIGNED: [ ] DETAILED: [ ] QUANTITIES: [ ] TRACED: [ ]  
 DESIGN CK: [ ] DETAIL CK: [ ] LRR/QUAN/CK: [ ] TRACE CK: [ ]