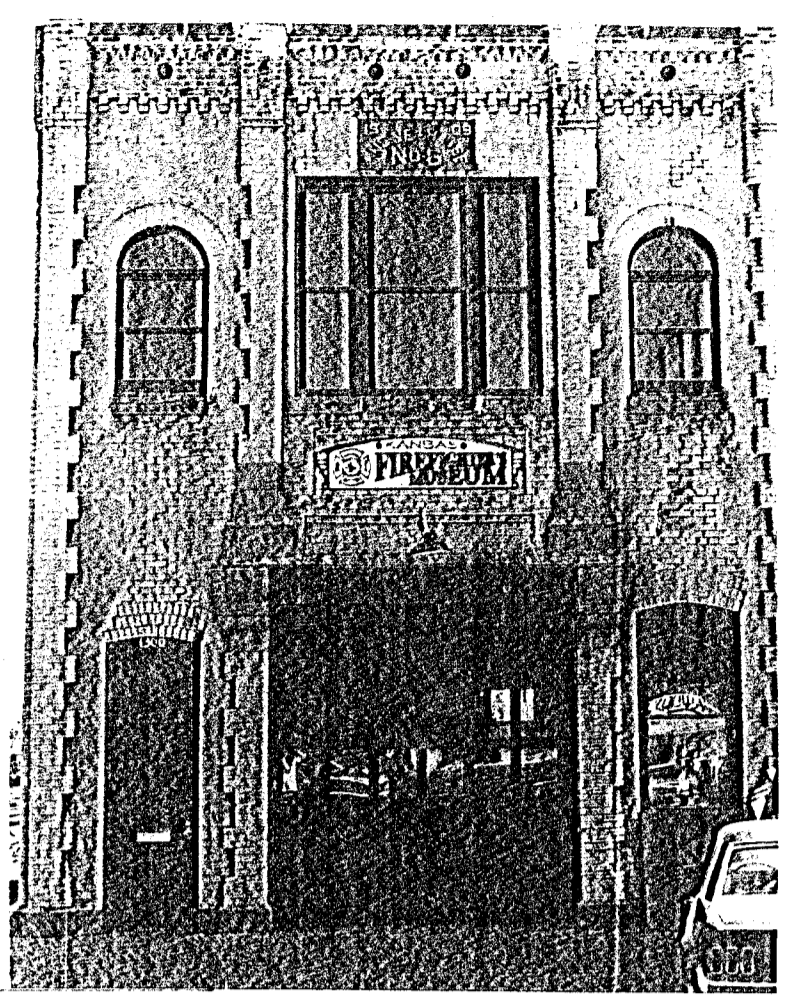
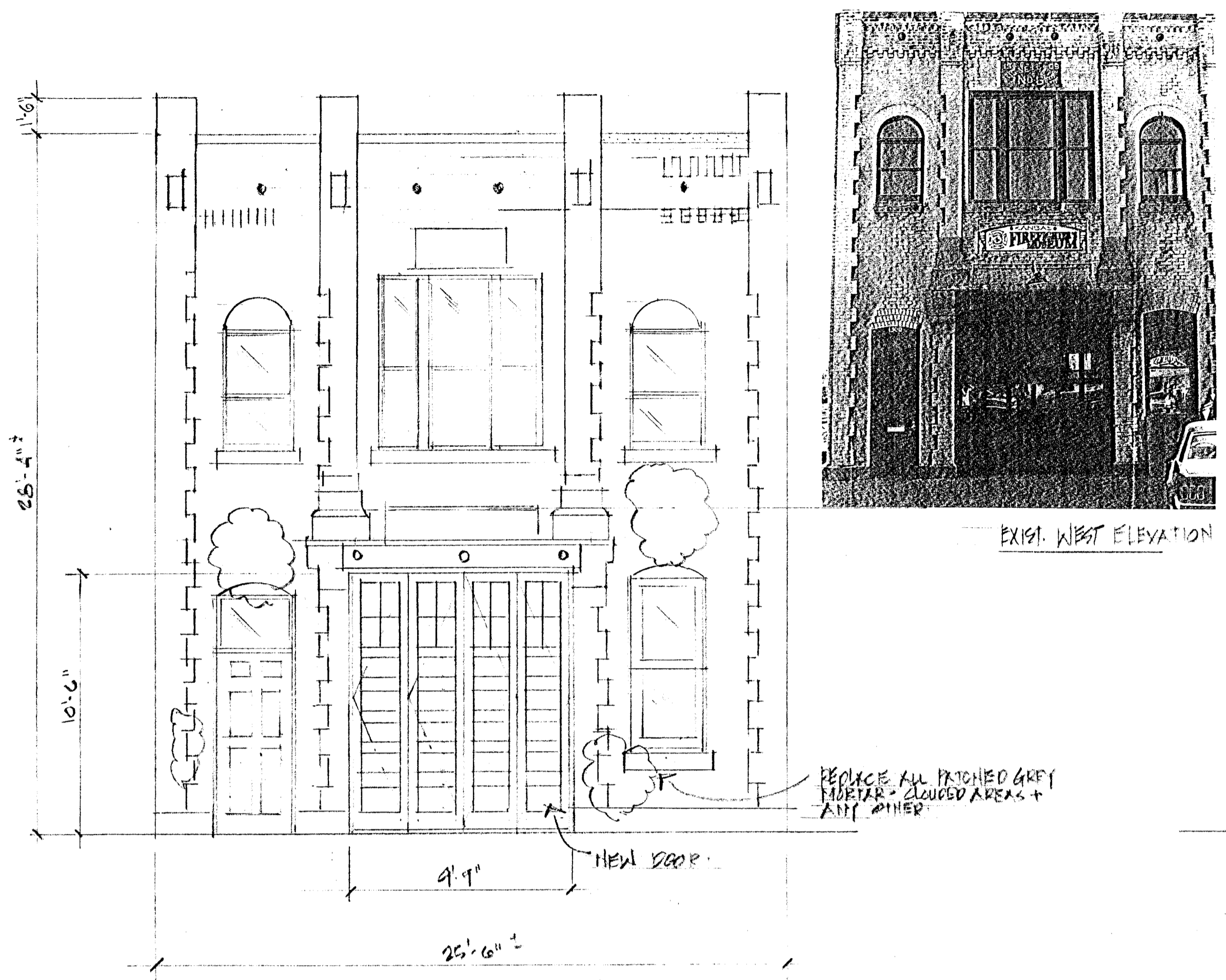
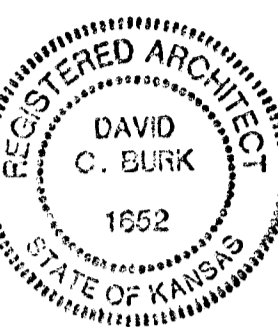
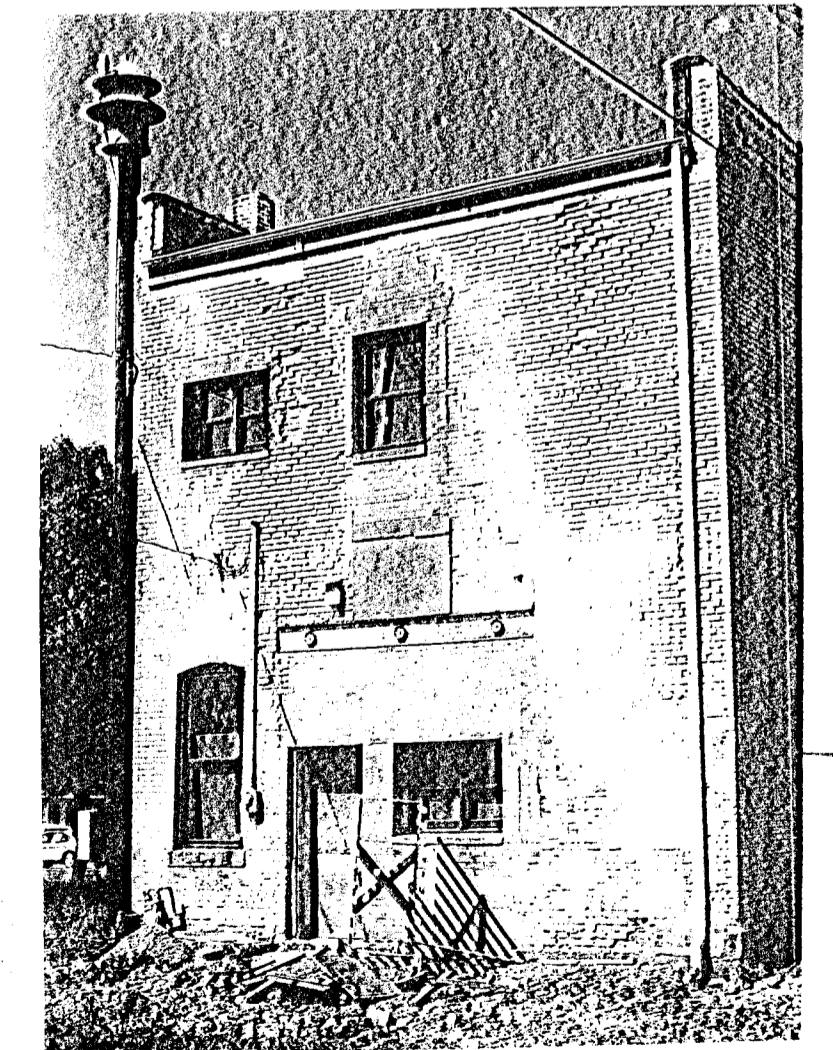
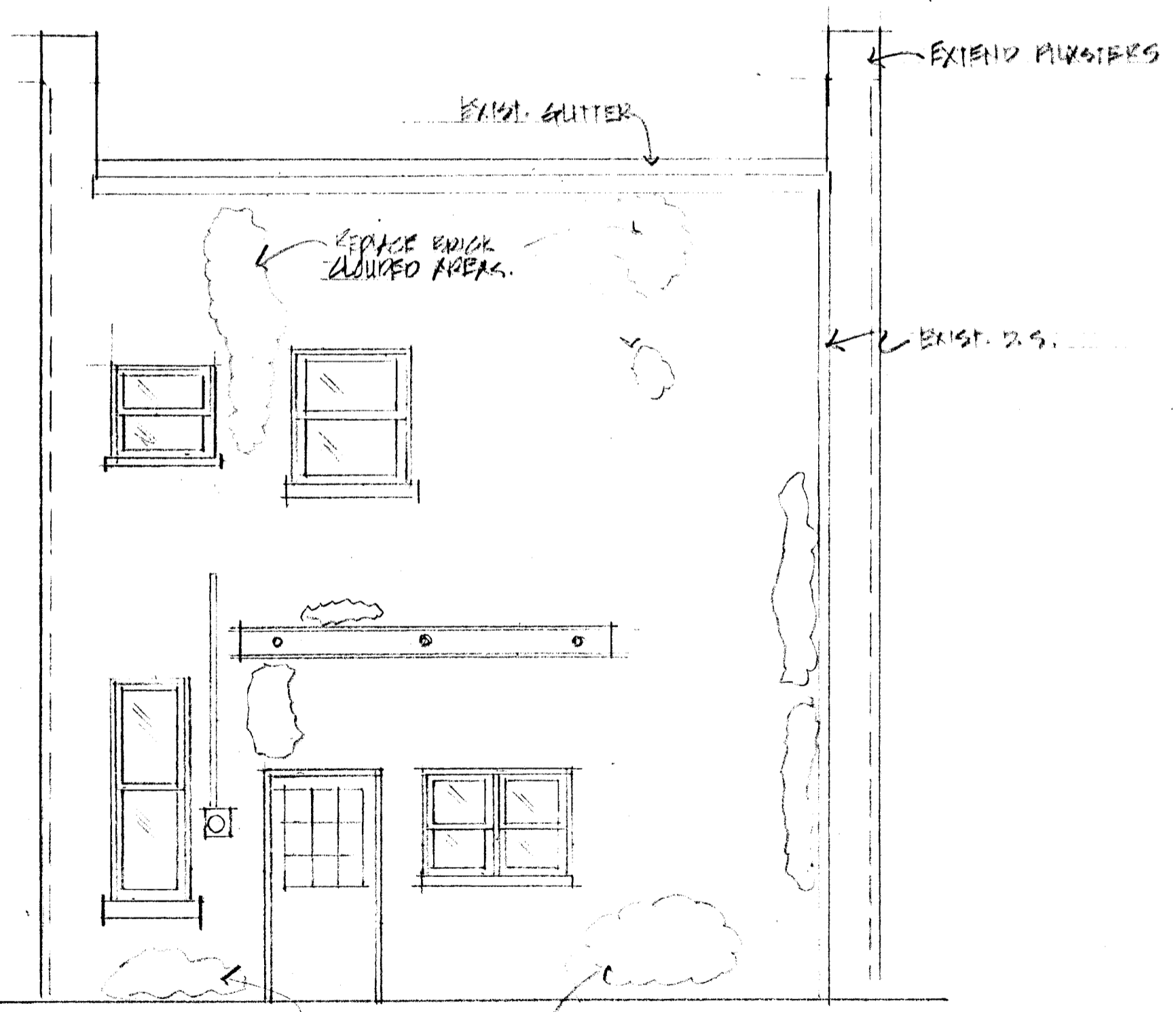
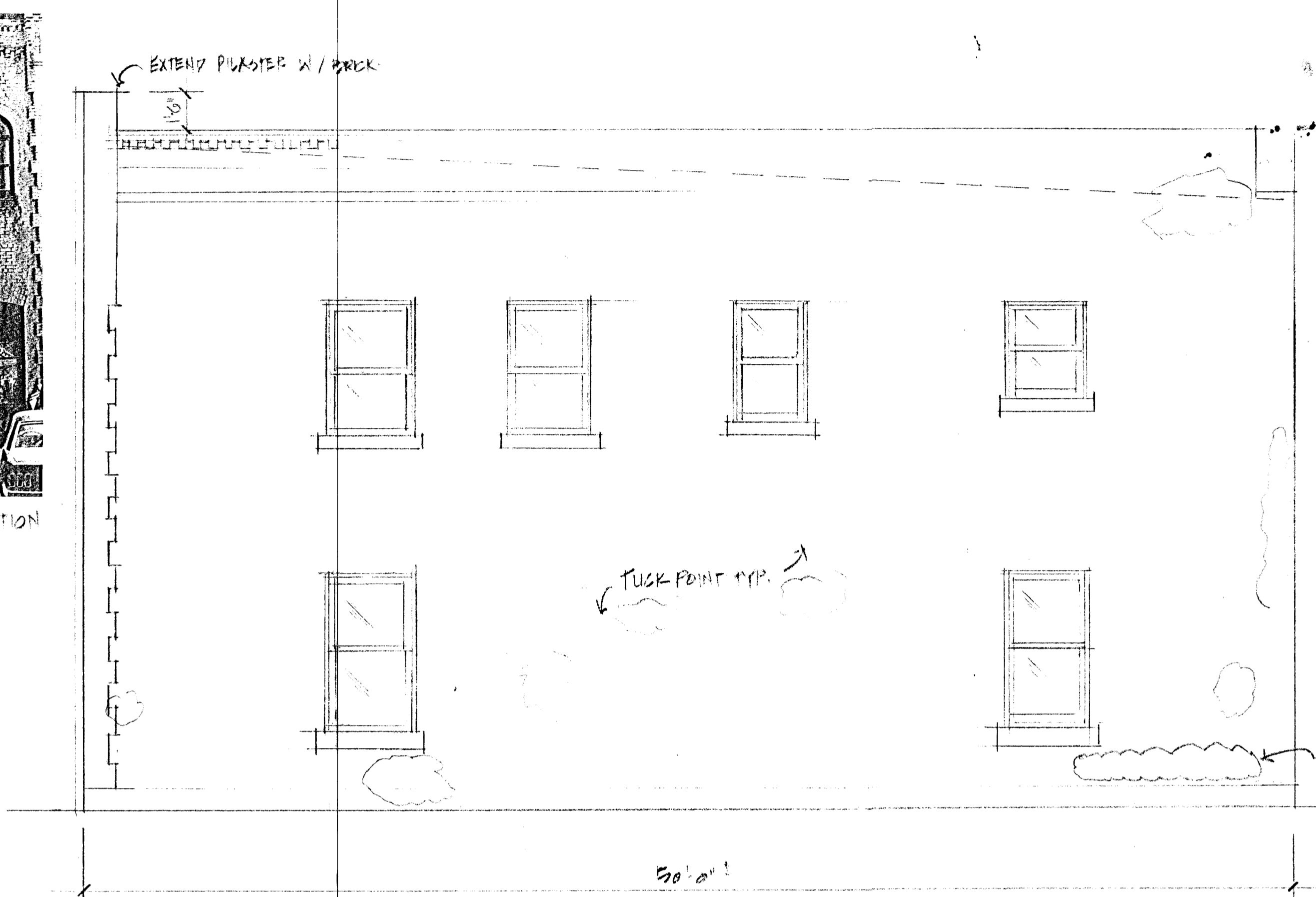


EXIST. SOUTH ELEV.

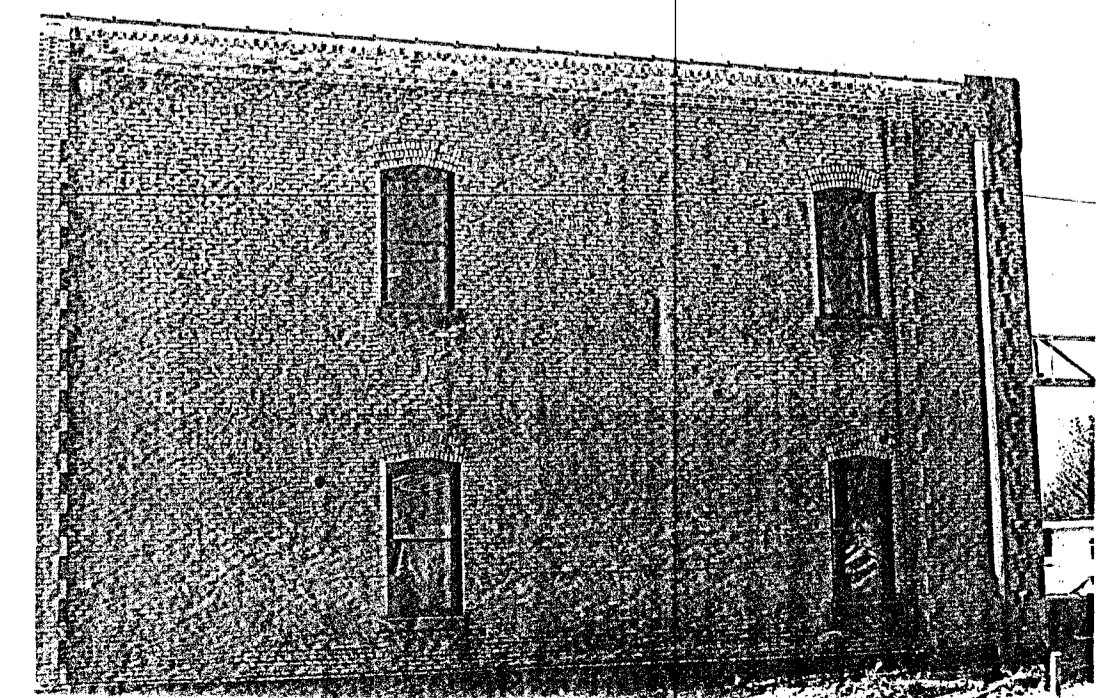
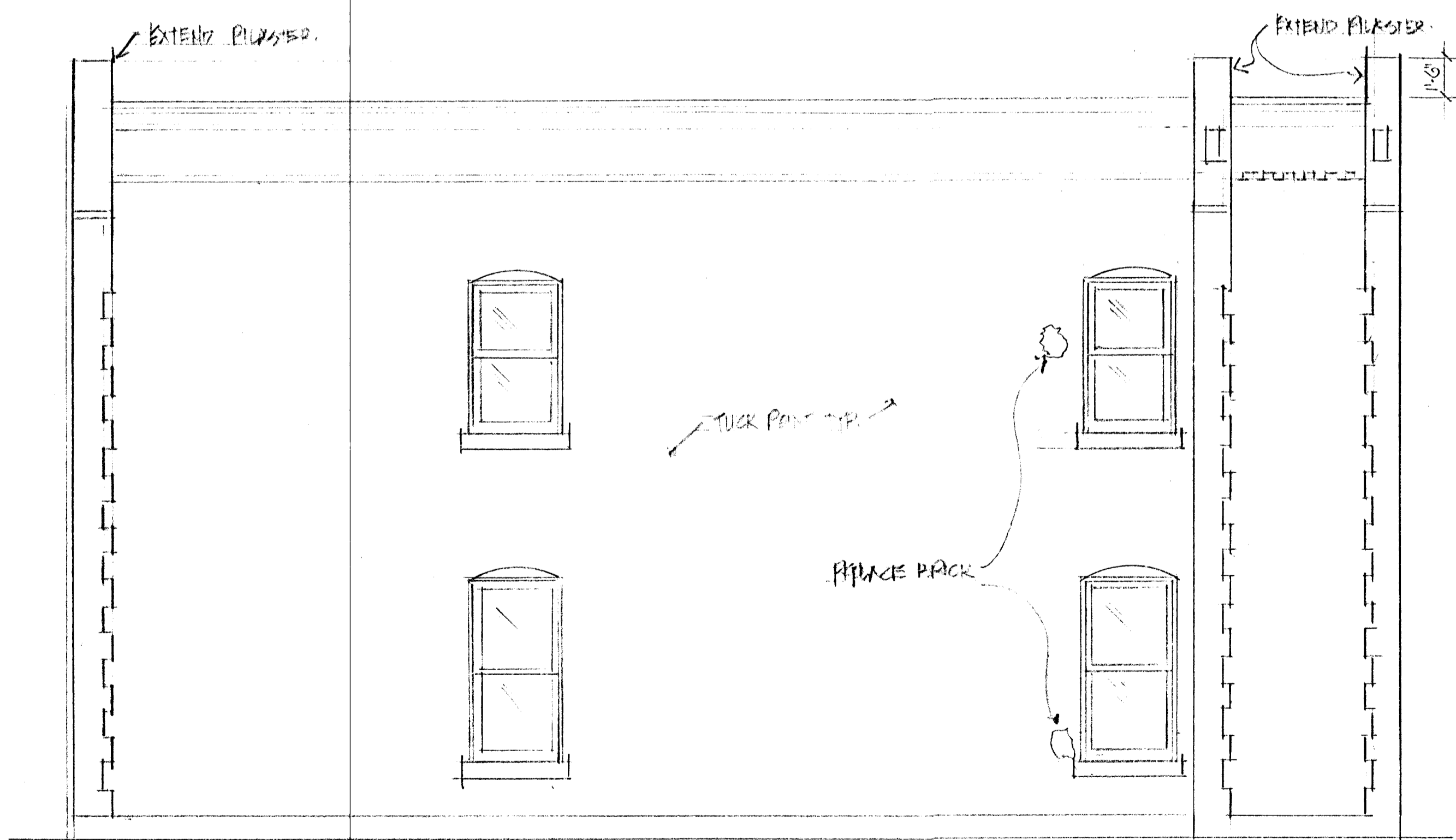
FIWA REGION NO	STATE	PROJECT NO	FISCAL YEAR	TOTAL SHEETS
7	KANSAS	87TB 0157-01	2000	2
F.A. NO. 87TE0157-01 TEA 015(701)				
472-87258 O.C.R. 192332				



EXIST. WEST ELEVATION



EXIST. EAST ELEVATION



EXIST. NORTH ELEV.

Data Block
 Project: tuck pointing of exterior walls with extension of pilasters, replacement of front, historic, wood, bifold engine doors
 Use: historic museum guided tours only
 Type: VN
 2 floors
 Square footage: 2600 sf (1300 per floor)
 Occupancy: A-3
 Occupant Load: display accessible area/ 15
 = first floor 230 sf / 15= 15
 + sec floor 480 sf / 15= 32
 total: 47
 2 exits not required from second floor
 Rest Rooms: one ADA, unisex on second floor
 Accessibility: First Floor only
 Sprinkled: No
 Fire alarm / smoke detectors: yes
 Fire extinguishers: one per floor

RESTORATION OF
 ENGINE HOUSE NO. 6
 1300 SOUTH BROADWAY
 WICHITA, KANSAS

9.1.99
 5.9.99