

STA 8+48.21

STA 8+70.37

STA 9+15

STA 9+34.78

STA 9+94.60

STA 10+15

STA 10+50

STA 11+00

STA 11+50

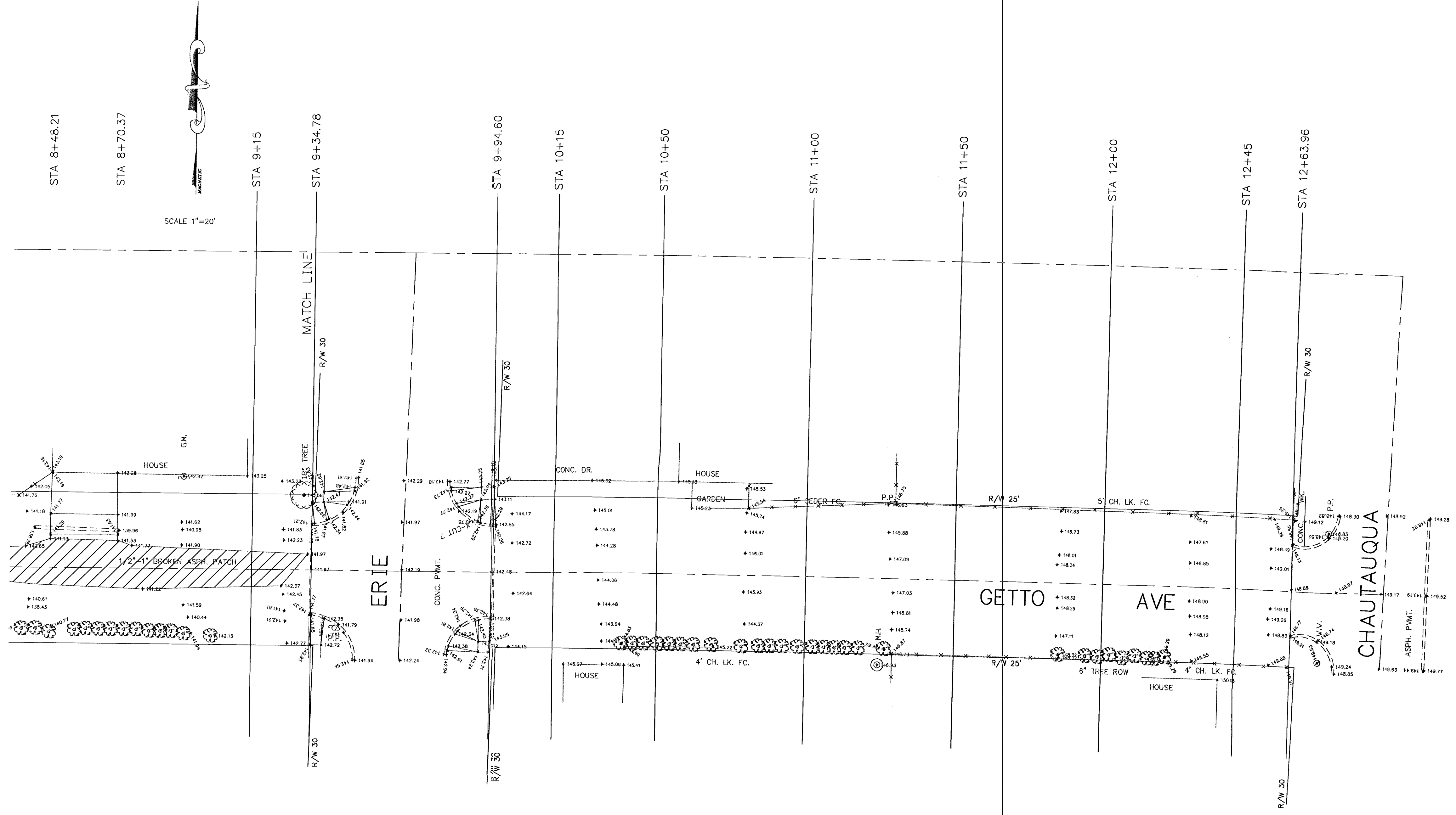
STA 12+00

STA 12+45

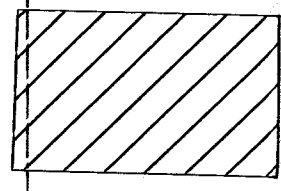
STA 12+63.96

SCALE 1"=20'

SCALE 1"=20'



B.M. 133.09 "X" TOP OF CB. ON W. SIDE ESTELLE & S.L. 14TH NO.
 TEMP. B.M. 1, 1322.58 "x" TOP CB. W. SIDE ESTELLE ON NL GETTO
 TEMP. B.M. 3, 1268.54 "x" TOP CB. 3' W. EL. GREEN ON S. SIDE OF GETTO
 TEMP. B.M. 5, 1368.87 "x" TOP CB. 4' E. WL. VOLUTSIA ON S. SIDE GETTO
 TEMP. B.M. 7, 142.78 "x" TOP CB. NE COR. ERIE & GETTO, @ SE COR. WCR RUNNING N-S



AREA TO BE REMOVED. THE COST OF SAW CUT IS SUBSIDIARY TO OTHER BID ITEMS.

GETTO ST. CLOSURE
 TOPO & REMOVAL PLANS
 INDEX # 617555
 SHEET 4 OF 11
 DRAWN: B.R. DESIGN: B.R.