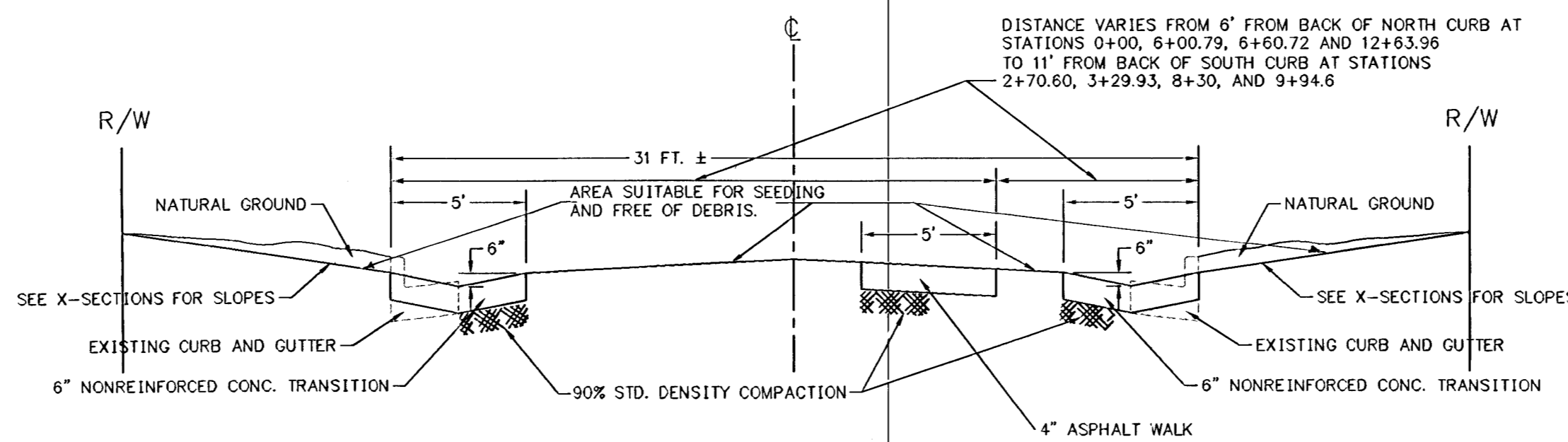
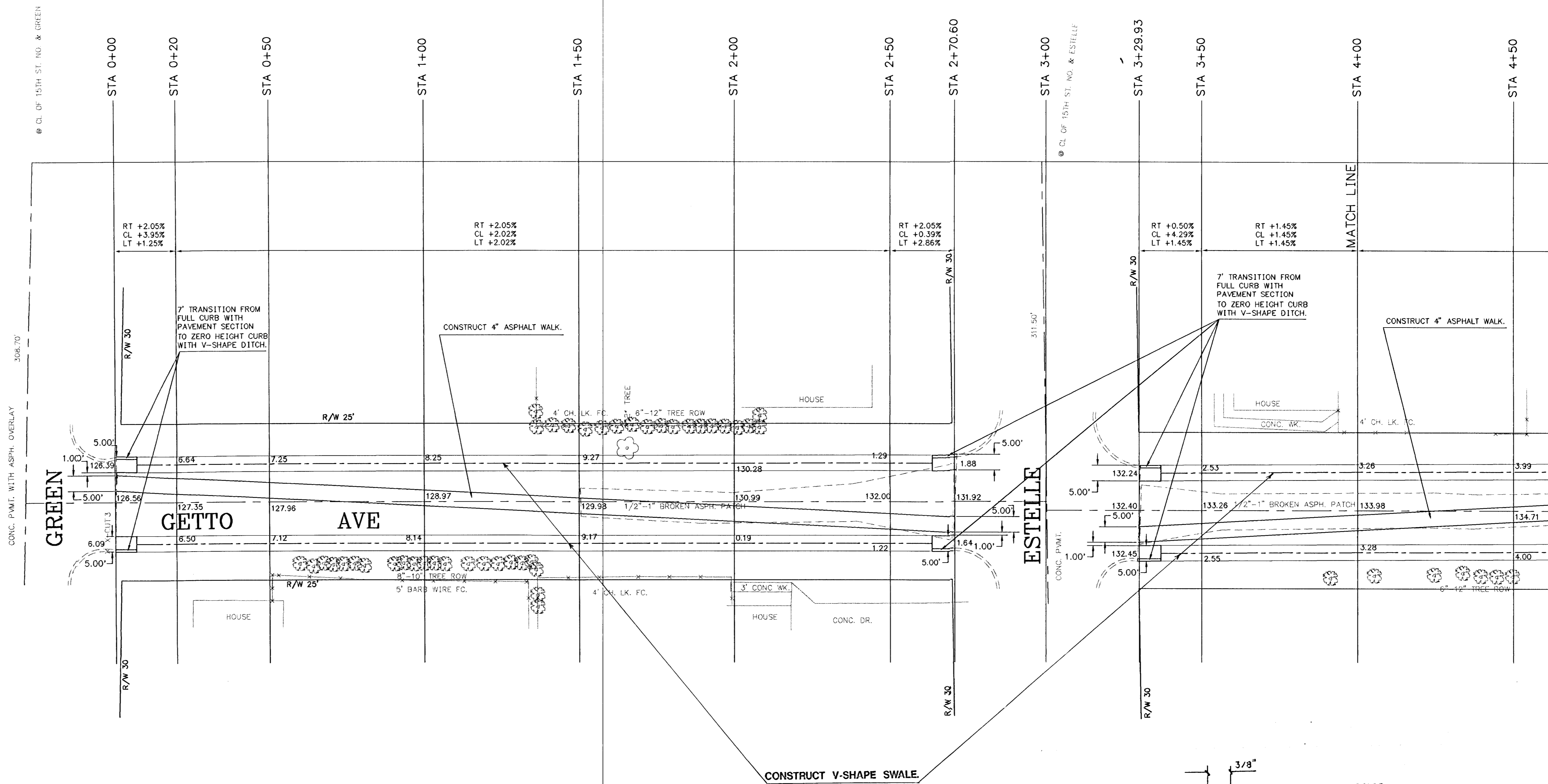


V-SHAPE SWALE DETAIL
NO SCALE

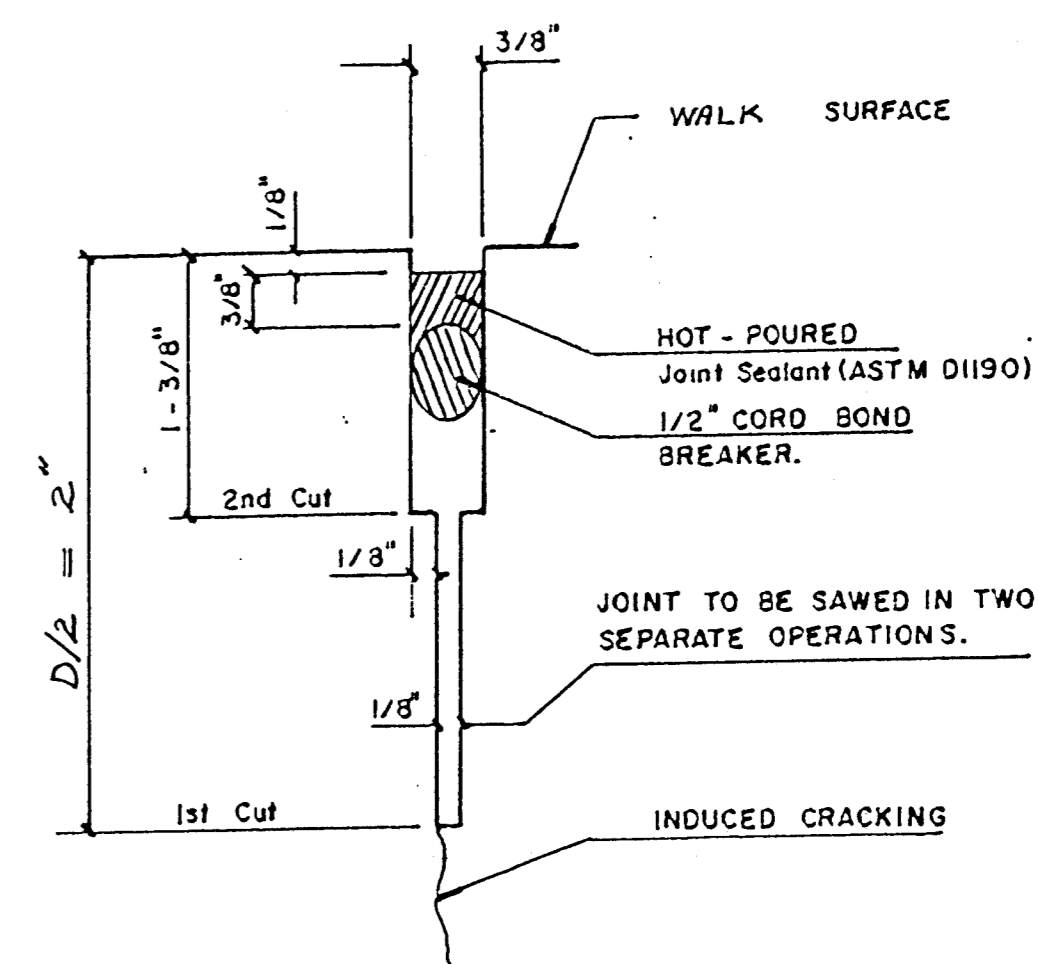
NOTES:

- THE VERTICAL ALIGNMENT (LONGITUDINAL & CROSS SLOPE) OF THE ASPH. WALK SHALL CONFORM TO THE SLOPE OF THE GROUND ALONG ITS PATH.
- THE ACTUAL HORIZONTAL ALIGNMENT OF THE SWALE & ASPH. WALK WILL BE DETERMINED BY THE PARK ENGINEER, & IT WILL BE STAKED AT THE TIME OF THE CONSTRUCTION.
- THE ELEVATIONS SHOWN IN THE SWALE ARE TO THE CENTER OF THE SWALE AT THE FLOW LINE.
- THE ELEVATIONS SHOWN IN THE MIDDLE OF THE ROAD ARE TO THE CENTER LINE OF ROAD AT ITS CROWN.

- B.M. 133.09 "X" TOP OF CB. ON W. SIDE ESTELLE & S.L. 14TH NO.
- TEMP. B.M. 1, 132.58 "+'" TOP CB. W. SIDE ESTELLE ON NL GETTO
- TEMP. B.M. 3, 126.54 "+'" TOP CB. 3' W. EL. GREEN ON S. SIDE OF GETTO
- TEMP. B.M. 5, 136.87 "+'" TOP CB. 4' E. WL. VOLUTSIA ON S. SIDE GETTO
- TEMP. B.M. 7, 142.78 "+'" TOP CB. NE COR. ERIE & GETTO, ● SE COR. WCR RUNNING N-S



TYPICAL TRANSVERSE SECTION
NO SCALE



TRANSVERSE JOINT

SAW AND SEAL THE ASPHALT WALK ON APPROXIMATELY EVERY 30 FEET INTERVALS.

GETTO ST. CLOSURE
CONSTRUCTION PLANS
INDEX # 617555
SHEET 5 OF 11

DRAWN: B.R. & R.D.L. DESIGN: B.R.