

# DRAINAGE IMPROVEMENTS In Connection With COWSKIN INTERCEPTOR SEWER

**PROJECT NO.  
468-76-245-81944-000-000-001**

CITY OF WICHITA, KANSAS  
MICHAEL E. LINDEBAK, CITY ENGINEER  
OCT. , 1989

**Index Code 630558**

### GENERAL NOTES

1. THE CONTRACTOR SHALL BE RESPONSIBLE FOR PRESERVING PROPERTY IRONS. THE CONTRACTOR SHALL BE REQUIRED TO RE-ESTABLISH ANY PROPERTY IRONS WHICH ARE DAMAGED OR DESTROYED BY HIS CONSTRUCTION OPERATIONS. SUCH IRONS SHALL BE RE-ESTABLISHED BY A LICENSED LAND SURVEYOR IN ACCORDANCE WITH STATE LAWS.
2. TREES TO BE REMOVED HAVE NOT BEEN INDIVIDUALLY MARKED. ALL TREES WHICH IN THE OPINION OF THE FIELD ENGINEER CAN BE SAVED, SHALL BE SAVED.
3. UNDERGROUND UTILITY SERVICE LINES AND OVERHEAD UTILITY POLE LINES ARE TO BE ADJUSTED AS NECESSARY BY OTHERS PRIOR TO CONSTRUCTION UNLESS THE PLANS SPECIFICALLY CALL FOR THEIR ADJUSTMENT BY THE CONTRACTOR OR UNLESS THE PLANS SPECIFICALLY IDENTIFY A UTILITY TO BE ADJUSTED BY ITS OWNER DURING CONSTRUCTION. EXISTING UTILITIES AND THEIR LOCATION, AS SHOWN ON THE PLANS, REPRESENT THE BEST INFORMATION OBTAINABLE FOR DESIGN. LOCATION INFORMATION HAS BEEN OBTAINED FROM THE VARIOUS UTILITY COMPANIES AND IS EITHER FROM COMPANY RECORD DRAWINGS OR COMPANY PROVIDED FIELD LOCATIONS. THE CONTRACTOR WILL BE REQUIRED TO WORK AROUND EXISTING UTILITIES WITHIN THE RIGHT-OF-WAY WHICH DO NOT CONFLICT WITH PROPOSED CONSTRUCTION.

NOTE: NOTIFY THE FOLLOWING COMPANIES PRIOR TO ANY EXCAVATION:

DELL TELEPHONE COMPANY	1-316-571-2115
CABLEVISION	262-4270 or 263-2061
KP&L GAS SERVICE COMPANY	263-7511
KANSAS GAS & ELECTRIC	264-1141
KANSAS ONE-CALL	1-800-344-7233
CITY OF WICHITA WATER DEPT.	268-4908
CITY OF WICHITA SEWER MAINT.	268-4071

### BENCH MARKS

- # 1 Chiseled "□" on concrete abutment at Southeast corner railroad bridge over Cowskin Creek, Northwest of lift station at North side of Harry Street  
Elev. = 128.60
- # 2 Railroad Spike in 10" Cottonwood Tree Approximately 20' West and 20' South of North 1/4 corner, Section 32  
Elev. = 121.42



SCALE: 1" = 400'



#### NOTE:

CONTRACTOR SHALL INSURE THAT ADEQUATE SUPPORT IS MAINTAINED FOR RAILWAY AND HIGHWAY ROADBEDS DURING INSTALLATION OF 54" PLRCP SANITARY SEWER.

### INDEX TO DRAWINGS

SHEET NO.	DESCRIPTION
1	TITLE PAGE
2	CHANNEL PLAN
3	CHANNEL PROFILE
4-6	CROSS-SECTIONS
P.E.C. 27 A	COWSKIN CREEK INTERCEPTOR SEWER 54" INTERCEPTOR PLAN & PROFILE

#### COORDINATE SYSTEM AS USED BY M.K.E.C. DURING PRELIMINARY SURVEY

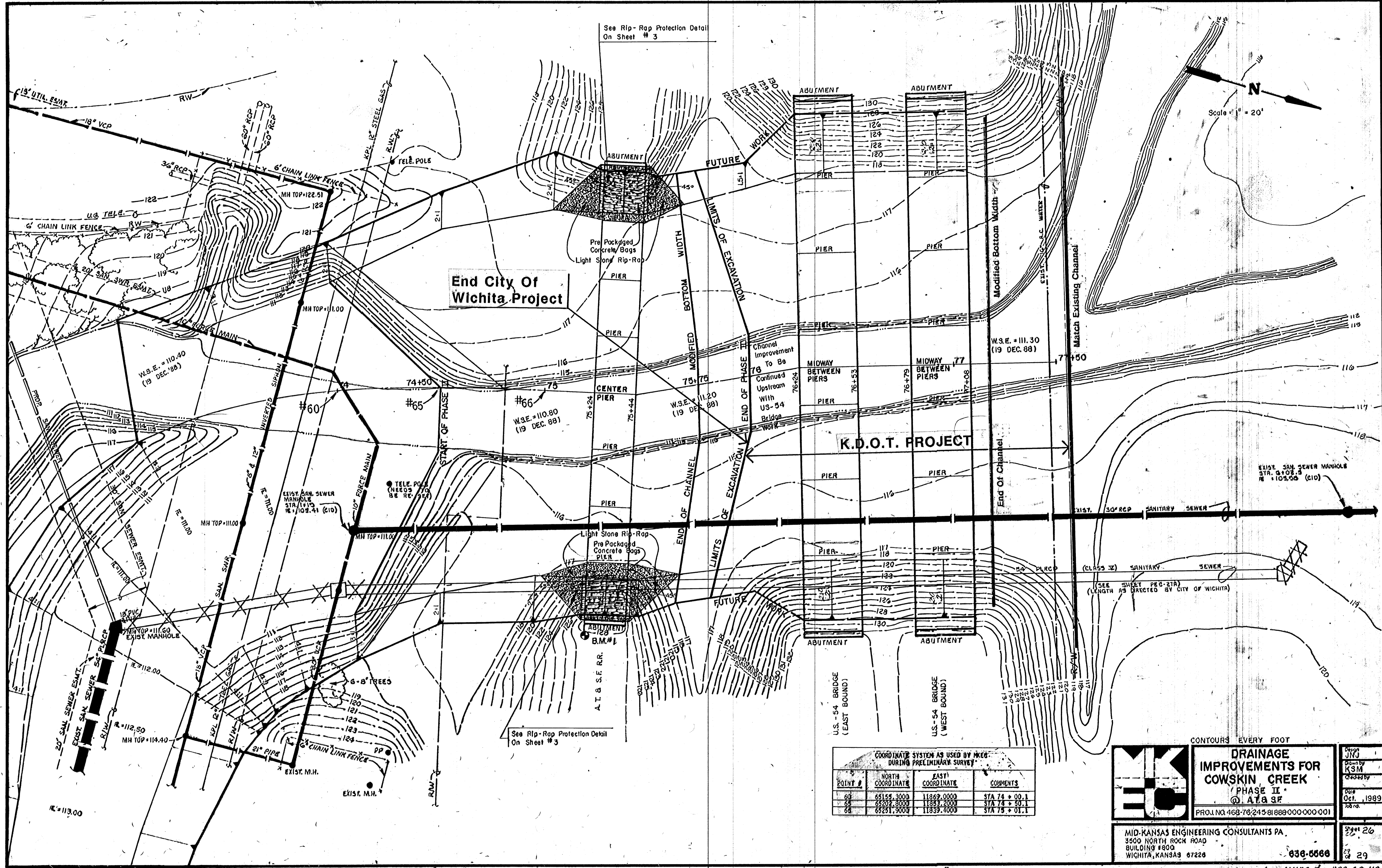
Point #	North Coordinate	East Coordinate	Comments
1	65077.3263	10491.7008	Northwest Corner, Sec. 32
2	65159.9998	13136.7134	North 1/4 Corner, Sec. 32
3	65258.7162	15784.2393	Northeast Corner, Sec. 32

Section 32, T27S, R1W, 6th P.M.



<b>MKEC</b>	<b>DRAINAGE IMPROVEMENTS FOR COWSKIN CREEK PHASE II AT AT&amp;SF</b>	Design JNJ
		Drawn by KSM
		Checked by
		Date Oct. , 1989
		Job no.

MID-KANSAS ENGINEERING CONSULTANTS PA 3500 NORTH ROCK ROAD BUILDING #800 WICHITA, KANSAS 67226	<b>636-5566</b>	Sheet <b>25</b> of <b>29</b>
---------------------------------------------------------------------------------------------------------	-----------------	---------------------------------



See Rip-Rap Protection Detail  
On Sheet # 3

End City of  
Wichita Project

K.D.O.T. PROJECT

Scale = 1" = 20'

N

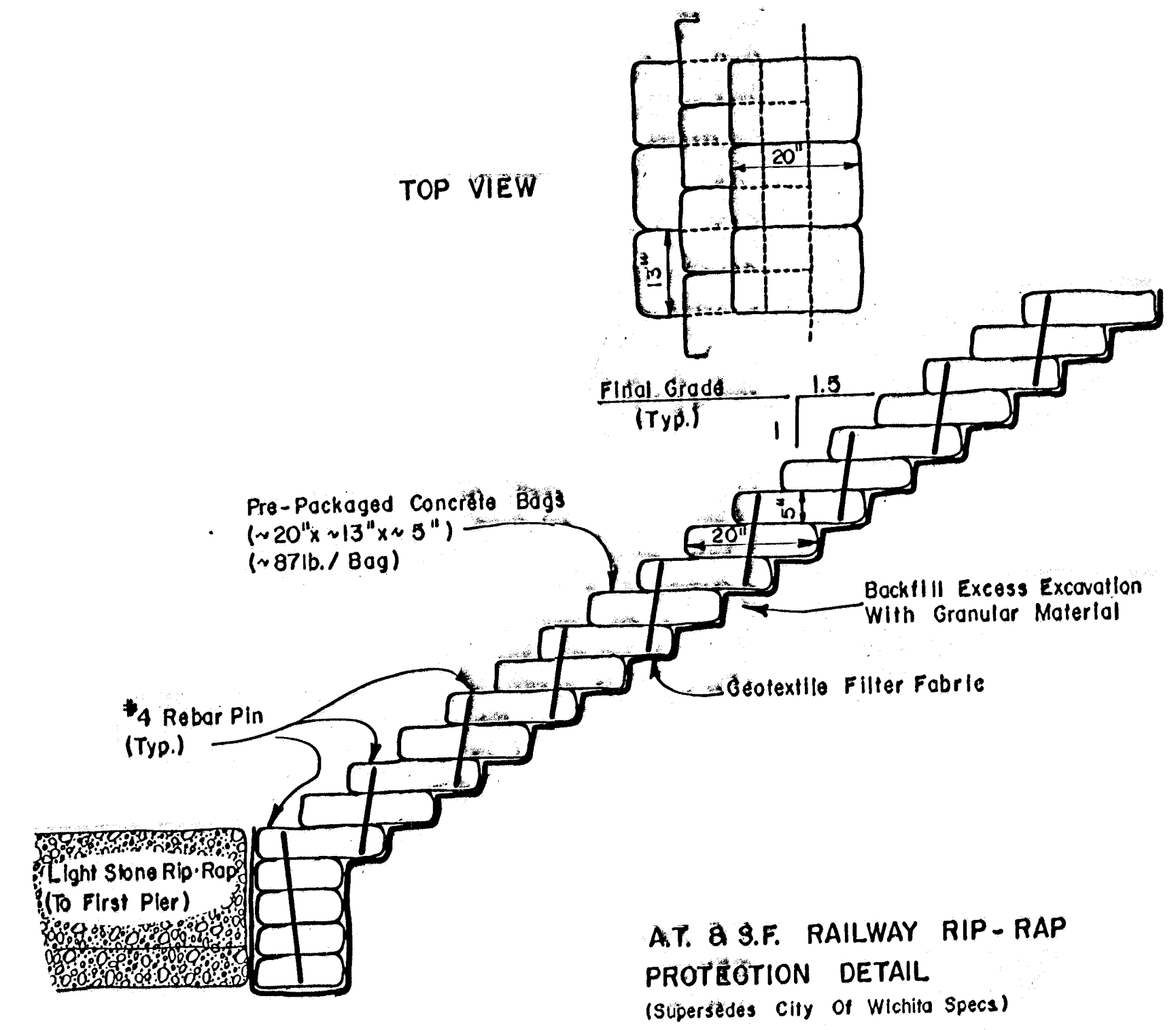
See Rip-Rap Protection Detail  
On Sheet # 3

COORDINATE SYSTEM AS USED BY MKEC  
DURING PRELIMINARY SURVEY

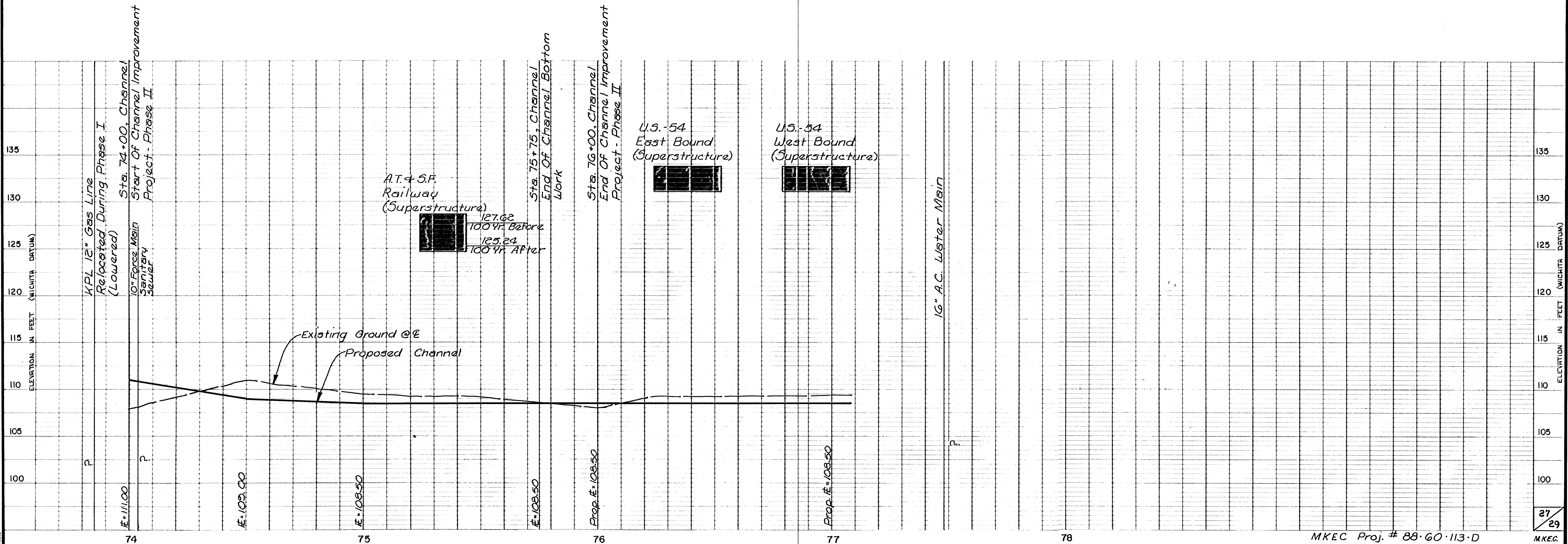
POINT #	NORTH COORDINATE	EAST COORDINATE	COMMENTS
60	65155.3000	11869.0000	STA 74 + 00.1
65	65202.8000	11853.2000	STA 74 + 50.1
66	65231.9000	11839.4000	STA 75 + 01.1

CONTOURS EVERY FOOT

	<b>DRAINAGE IMPROVEMENTS FOR COWSKIN CREEK</b> PHASE II @ A.T. & S.F.	Design: JNJ Drawn by: KSM Checked by:
	PROJ. NO. 468-76-245-81888-000-000-001	Date: Oct., 1989 100 no.
	MID-KANSAS ENGINEERING CONSULTANTS PA. 3500 NORTH ROCK ROAD BUILDING #800 WICHITA, KANSAS 67226	Sheet 26 29
	636-6666	MKEC Proj. #88-60-113

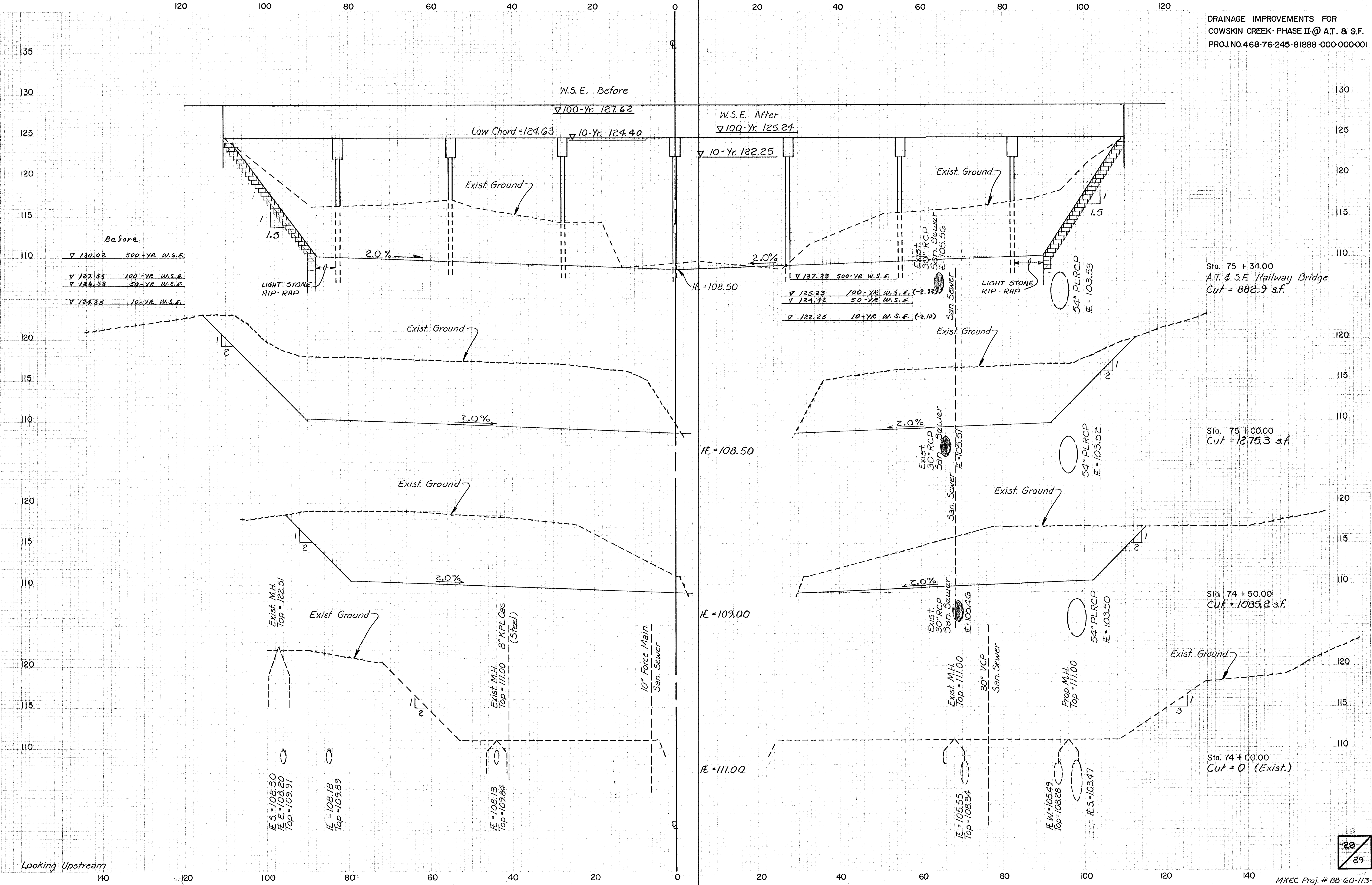


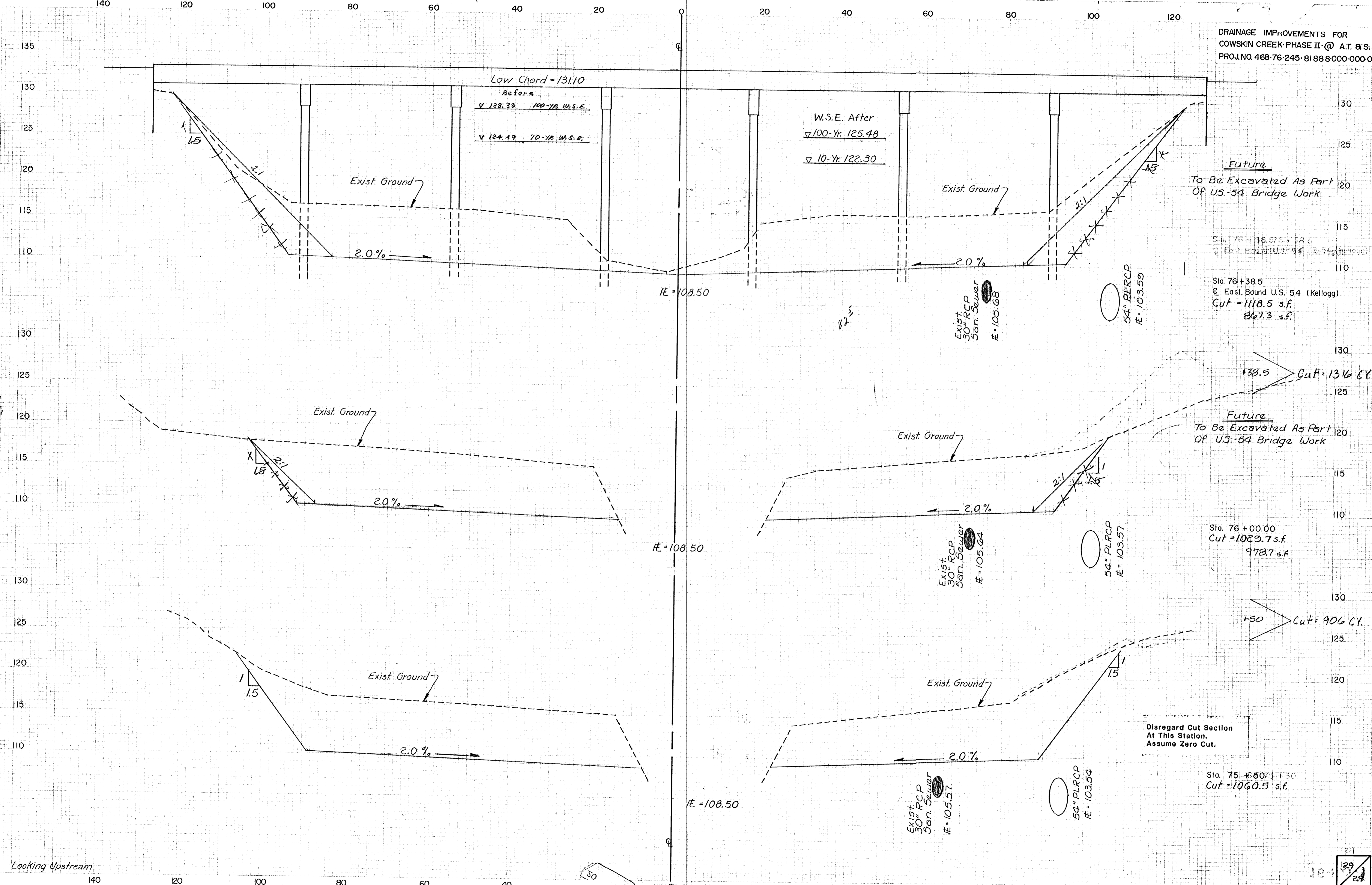
A.T. & S.F. RAILWAY RIP-RAP  
PROTECTION DETAIL  
(Supersedes City Of Wichita Specs)



DATE	
BY	
CHECKED	
DESIGNED	
APPROVED	
SCALE	

DATE	
BY	
CHECKED	
DESIGNED	
APPROVED	
SCALE	





Looking Upstream