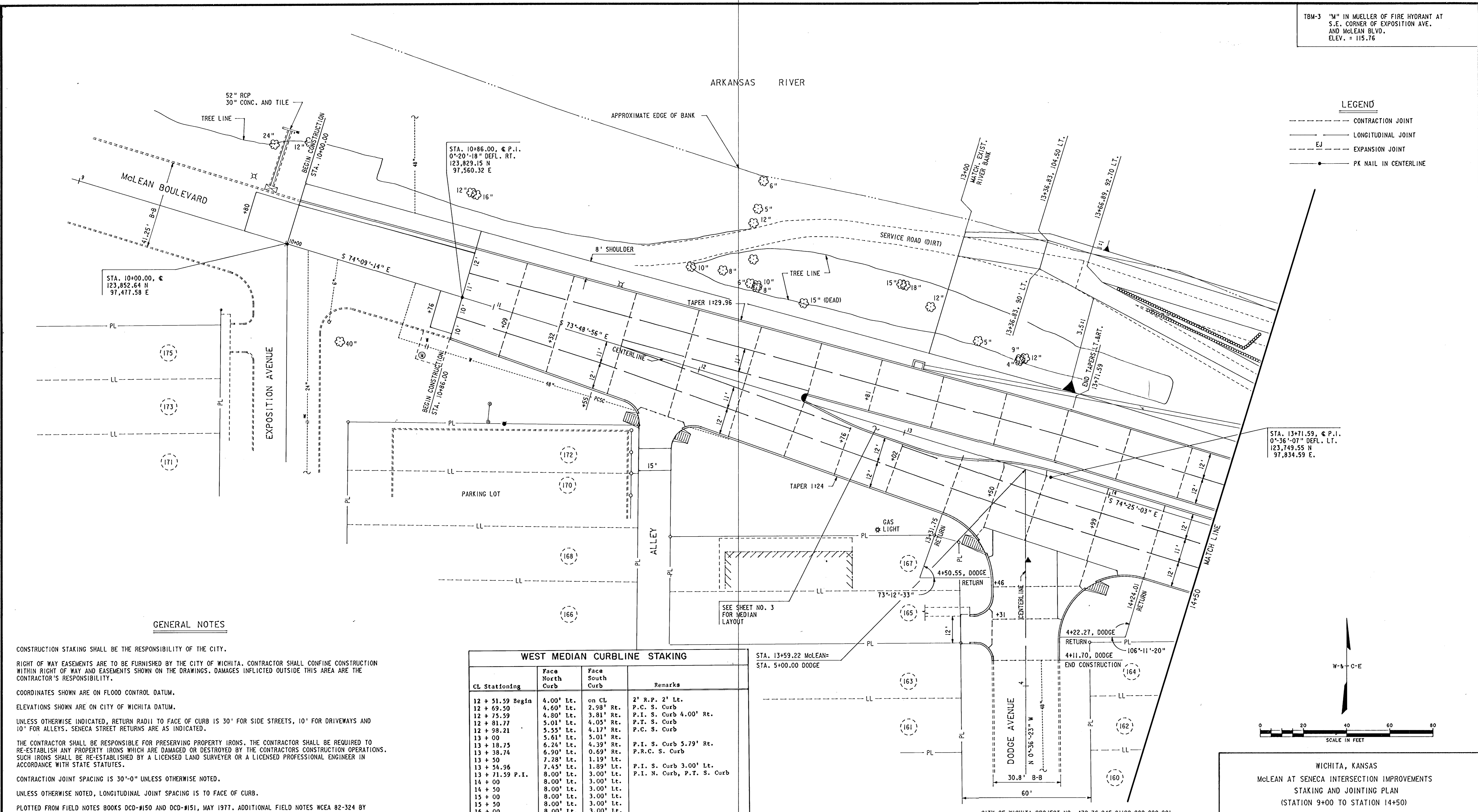


TBM-3 "M" IN MUELLER OF FIRE HYDRANT AT S.E. CORNER OF EXPOSITION AVE. AND McLEAN BLVD. ELEV. = 115.76

**LEGEND**

- CONSTRUCTION JOINT
- LONGITUDINAL JOINT
- E.U. EXPANSION JOINT
- PK NAIL IN CENTERLINE



**GENERAL NOTES**

CONSTRUCTION STAKING SHALL BE THE RESPONSIBILITY OF THE CITY.

RIGHT OF WAY EASEMENTS ARE TO BE FURNISHED BY THE CITY OF WICHITA. CONTRACTOR SHALL CONFINE CONSTRUCTION WITHIN RIGHT OF WAY AND EASEMENTS SHOWN ON THE DRAWINGS. DAMAGES INFLICTED OUTSIDE THIS AREA ARE THE CONTRACTOR'S RESPONSIBILITY.

COORDINATES SHOWN ARE ON FLOOD CONTROL DATUM.

ELEVATIONS SHOWN ARE ON CITY OF WICHITA DATUM.

UNLESS OTHERWISE INDICATED, RETURN RADI TO FACE OF CURB IS 30' FOR SIDE STREETS, 10' FOR DRIVEWAYS AND 10' FOR ALLEYS. SENECA STREET RETURNS ARE AS INDICATED.

THE CONTRACTOR SHALL BE RESPONSIBLE FOR PRESERVING PROPERTY IRONS. THE CONTRACTOR SHALL BE REQUIRED TO RE-ESTABLISH ANY PROPERTY IRONS WHICH ARE DAMAGED OR DESTROYED BY THE CONTRACTORS CONSTRUCTION OPERATIONS. SUCH IRONS SHALL BE RE-ESTABLISHED BY A LICENSED LAND SURVEYER OR A LICENSED PROFESSIONAL ENGINEER IN ACCORDANCE WITH STATE STATUTES.

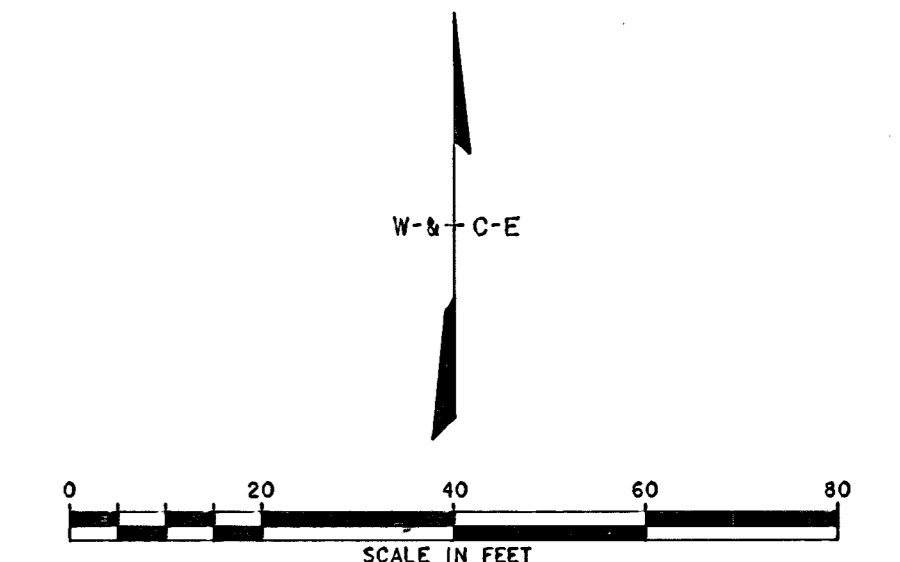
CONTRACTION JOINT SPACING IS 30'-0" UNLESS OTHERWISE NOTED.

UNLESS OTHERWISE NOTED, LONGITUDINAL JOINT SPACING IS TO FACE OF CURB.

PLOTTED FROM FIELD NOTES BOOKS DCD-#150 AND DCD-#151, MAY 1977. ADDITIONAL FIELD NOTES WCEA 82-324 BY TLM, 1982.

**WEST MEDIAN CURBLINE STAKING**

CL Stationing	Face North Curb	Face South Curb	Remarks
12 + 51.59 Begin	4.00' Lt.	on CL	2' R.P. 2' Lt.
12 + 69.50	4.60' Lt.	2.98' Rt.	P.C. S. Curb
12 + 75.59	4.80' Lt.	3.81' Rt.	P.I. S. Curb 4.00' Rt.
12 + 81.77	5.01' Lt.	4.05' Rt.	P.T. S. Curb
12 + 98.21	5.55' Lt.	4.17' Rt.	P.C. S. Curb
13 + 00	5.61' Lt.	5.01' Rt.	
13 + 18.75	6.24' Lt.	4.59' Rt.	P.I. S. Curb 5.79' Rt.
13 + 38.74	6.90' Lt.	0.69' Rt.	P.R.C. S. Curb
13 + 50	7.28' Lt.	1.19' Lt.	
13 + 54.96	7.45' Lt.	1.89' Lt.	P.I. S. Curb 3.00' Lt.
13 + 71.59 P.I.	8.00' Lt.	3.00' Lt.	P.I. N. Curb, P.T. S. Curb
14 + 00	8.00' Lt.	3.00' Lt.	
14 + 50	8.00' Lt.	3.00' Lt.	
15 + 00	8.00' Lt.	3.00' Lt.	
15 + 50	8.00' Lt.	3.00' Lt.	
16 + 00	8.00' Lt.	3.00' Lt.	
16 + 01.07 PC	8.00' Lt.	3.00' Lt.	P.C. N. and S. Curb
16 + 25	8.00' Lt.	3.00' Lt.	
16 + 50	8.00' Lt.	3.00' Lt.	
16 + 65.62 End	8.00' Lt.	3.00' Lt.	2.5' R.P. 5.5' Lt.



WICHITA, KANSAS  
 McLEAN AT SENECA INTERSECTION IMPROVEMENTS  
 STAKING AND JOINTING PLAN  
 (STATION 9+00 TO STATION 14+50)

CITY OF WICHITA PROJECT NO. 472-76-245-81199-000-000-001

DESIGN JMO	DRAWN KWD	DATE: OCT 1983
		FILE NO. 82-324A
		SHEET NO. 12 OF 37

**WILSON & COMPANY**  
 ARCHITECTS  
 WICHITA - KANSAS

REVISION	DATE	BY

Q511102.10438232446C.DGN BORDER A