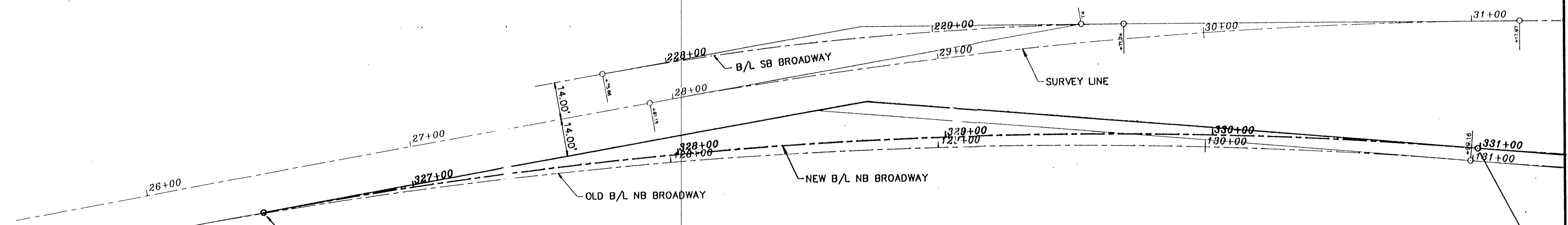
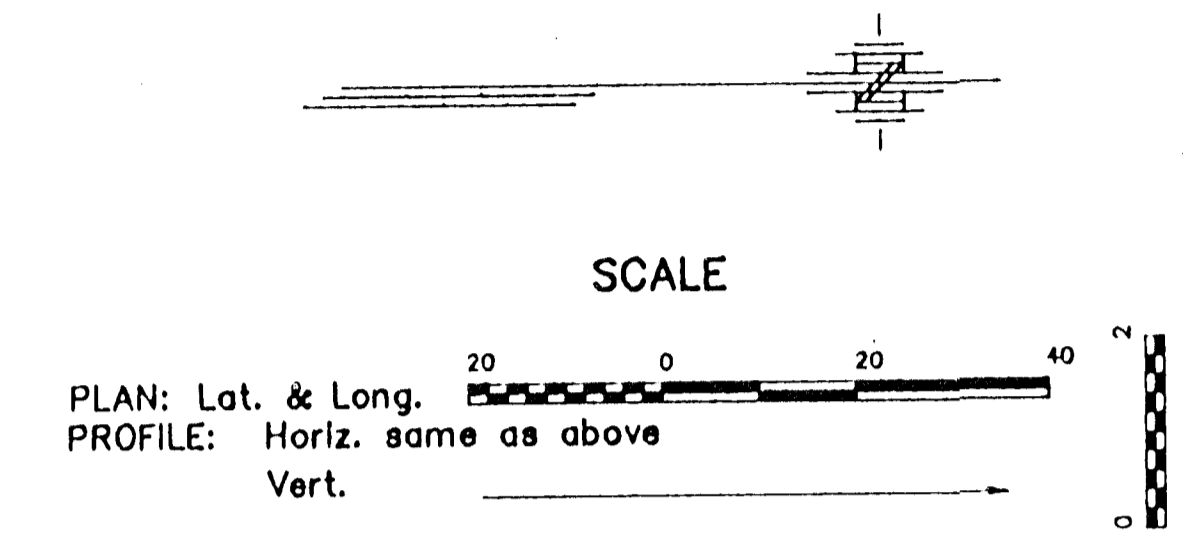


FHWA REGION NO.	STATE	PROJECT NO.	YEAR	SHEET NO.	TOTAL SHEETS
7	KANSAS	87 N 0024 - 01	1994	1	4



P.C. STA. 326+56.93 NB B/L BEGIN
 PROJ. NO. 84 N 0024-01
 BEGIN TAPER LT. & RT.

**CURVE DATA
 NEW NB BROADWAY**

P.I. STA. 328+71.25 =
 12.33' RT. STA. 28+71.25 SURVEY LINE
 $\Delta = 14^{\circ}37'26.2''$ RT.
 $D = 312'23.0''$
 $R = 1786.93'$
 $T = 229.29'$
 $L = 456.09'$
 $E = 14.65'$

P.R.C. STA. 330+99.16 NB B/L
 PROJ. NO. 84 N 0024-01

**JOHN MACK BRIDGE
 RE-ALIGNMENT**

CARBER SURVEYING SERVICE, P.A.
 423 WEST FIRST AVENUE
 HUTCHINSON, KANSAS 67601
 Ph 316-685-7032 Fax 316-683-7401

**BROADWAY PLAN
 STA. 326+00 to STA. 331+00**

Drawn By: RDB	Checked By: DEO
Scale: 20'	Job No.: C95-143
Date: 05/23/1995	Sheet 1 of 4 Sheets