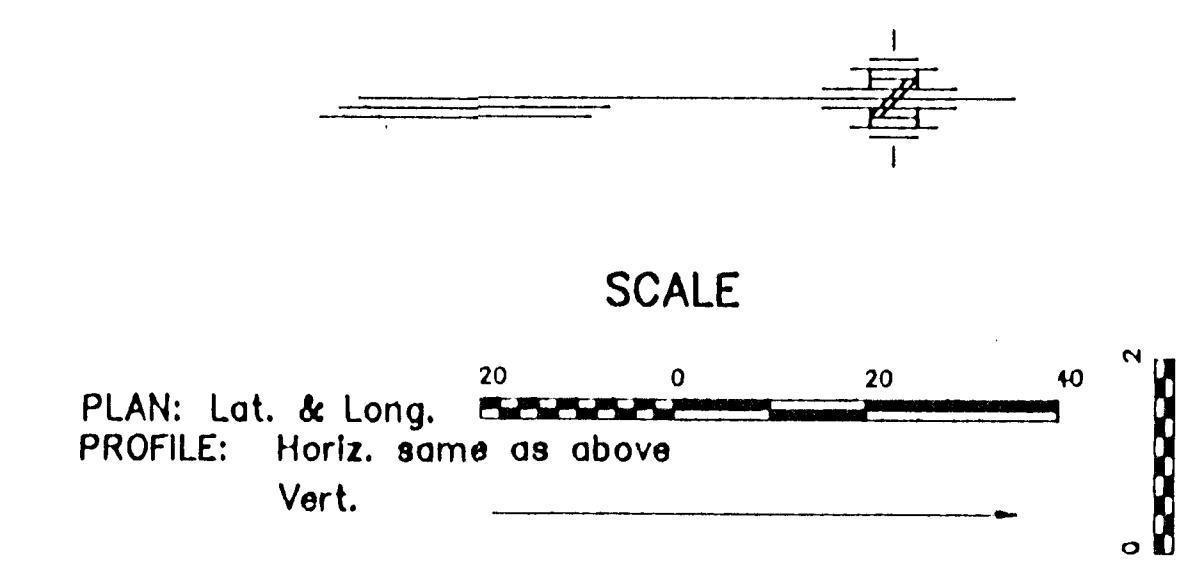
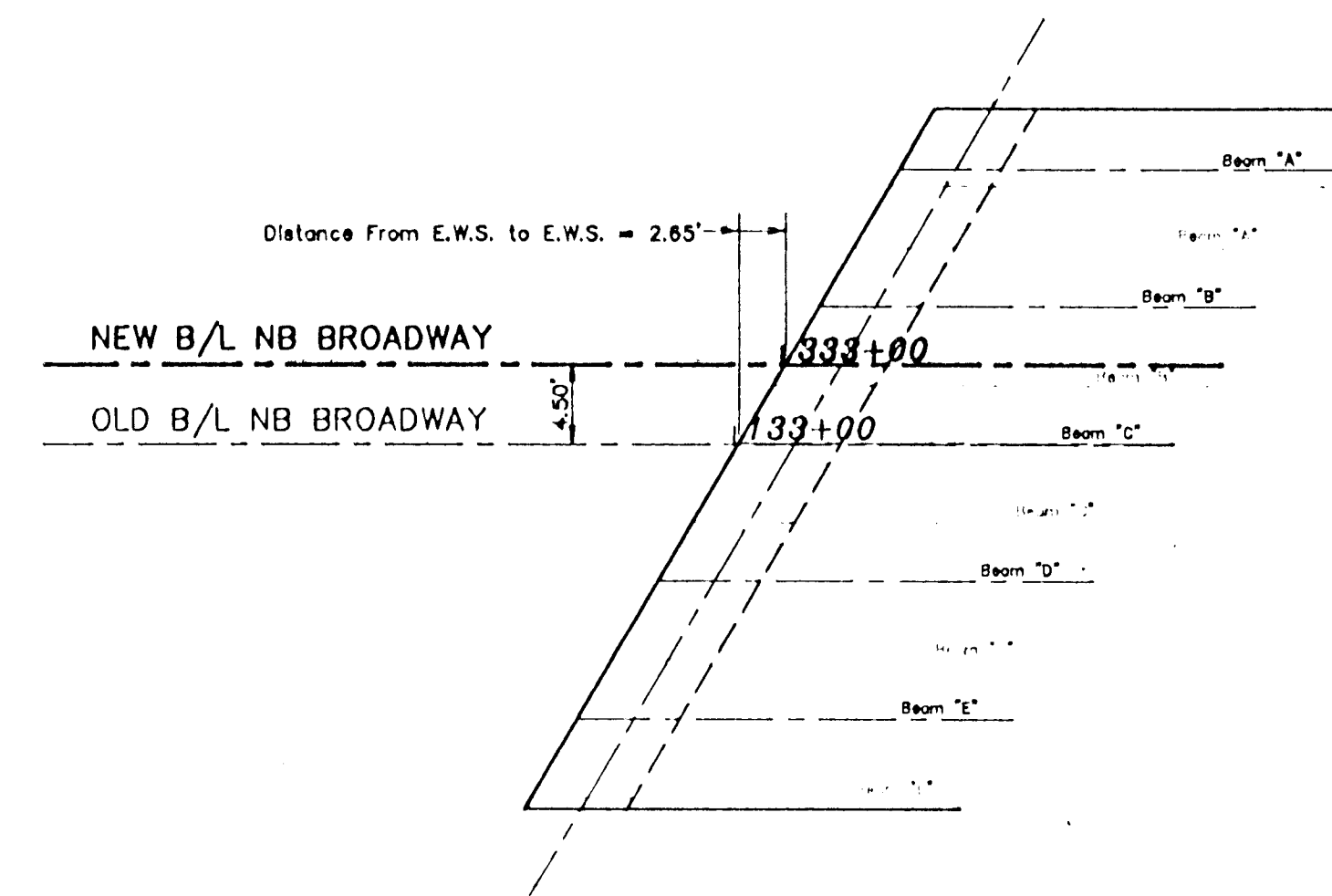
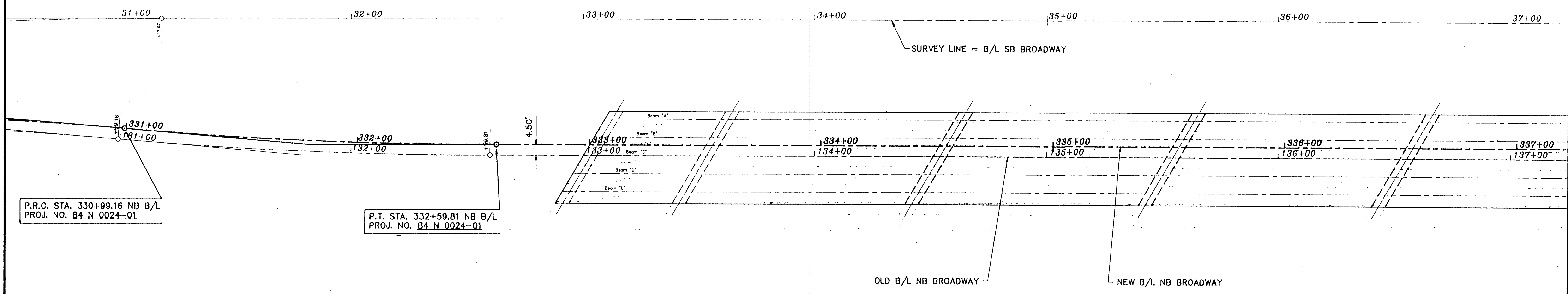


FHWA REGION NO.	STATE	PROJECT NO.	YEAR	SHEET NO.	TOTAL SHEETS
7	KANSAS	87 N 0024 - 01	1994	2	4



BRIDGE RELOCATION DETAIL



P.R.C. STA. 330+99.16 NB B/L
PROJ. NO. 84 N 0024-01

P.T. STA. 332+59.81 NB B/L
PROJ. NO. 84 N 0024-01

**CURVE DATA
NEW NB BROADWAY**

P.I. STA. 331+79.49 =
54.16' RT. STA. 31+82.10 SURVEY LINE
Δ = 4°49'10.6" RT.
D = 3°00'00.0"
R = 1909.86'
T = 80.37'
L = 180.65'
E = 1.69'

RE-ALIGNMENT

GARBER SURVEYING SERVICE, P.A.
423 WEST FIRST AVENUE
HUTCHINSON, KANSAS 67501
Ph. 316-685-7032 Fax 316-683-7401

BROADWAY PLAN
STA. 331+00 to STA. 337+00

Drawn By: RDB Checked By: DEG
Scale: 1"=20' Job No.: C95-143
Date: 06/23/1995 Sheet 2 of 4 Sheets