

GENERAL NOTES:

- The Contractor shall comply with all applicable safety regulations. All construction shall be completed following current City Standard Specifications and Special Provisions.
- Contractor will be required to provide notice to utility companies a minimum of seventy-two (72) hours prior to any excavation, as follows:  
Kansas One-Call 687-2470  
The Contractor must notify the following in case of an emergency:  
AT&T 1-800-246-8464  
Black Hills Energy 1-800-694-8989  
City of Wichita Water & Sewer 1-316-219-8921  
City of Wichita Stormwater 1-316-268-4090  
City of Wichita Traffic 1-316-268-4034  
Cox Communications 1-888-249-3530  
Kansas Gas Service 1-888-482-4950  
Westar Energy 1-800-544-4857
- Utility service lines, poles, etc. are to be adjusted as necessary by others prior to construction unless the plans specifically call for their adjustment by the Contractor or unless the plans specifically identify a utility to be adjusted by its owner during construction. Existing utilities and their location, as shown on the plans, represent the best information obtainable for design. The Contractor will be required to work around existing utilities within the right-of-way which do not conflict with proposed construction.
- Rubble from the removal of miscellaneous structures and excess excavation which is to be wasted shall be disposed of on sites to be provided by the Contractor. These sites shall be approved by the Engineer as to suitability, appearance and site location. Locations, in the opinion of the Engineer, that will leave an unsightly appearance will not be approved. All disposal sites must be approved by the Kansas Department of Health and Environment. Material either stockpiled or disposed of in a flood plain will require a Kansas State Board of Agriculture permit. Any material dumped in waters of the United States or wetlands is subject to U.S. Corps. of Engineers permitting regulations. Any material buried or stockpiled beyond approved construction limits will require additional archaeological investigations unless buried in a previously approved borrow location.
- Trees and shrubs in public right-of-way which are in direct conflict with proposed new construction shall be removed by the Contractor with the City Engineer's approval. Trees and shrubs which are not in direct conflict with proposed new construction shall be saved and protected from damage.
- The Contractor shall give all property owners and/or tenants of developed property abutting the construction of this project a minimum of ten (10) days notice prior to start of construction.
- The Contractor shall be responsible for preserving property irons. The Contractor will be required to re-establish any property irons which are damaged or destroyed by his construction operations. Such irons shall be re-established by a licensed land surveyor in accordance with state laws.
- All elevations shown are NGVD29.
- All areas disturbed during construction that will not be under proposed pavement shall be restored to match existing conditions.
- Opening and closing of water valves shall be done slowly to prevent damage to the water distribution system from water hammer. All valves closed by the contractor must be reopened as new construction permits. The project inspector must ascertain that any valve closed by the Contractor is reopened. The contractor will be permitted to operate water valves only when the project inspector assigned to the project is present.
- The Contractor shall lay a Tracer Wire and Set Test Stations along all water pipe installed in accordance with City Specifications and Tracer Wire Detail on detail sheet WL-101, cost is subsidiary to pipe installation.
- The Contractor shall protect from damage and support existing utilities through construction as approved by the utility owner and the Engineer at the contractor's expense.
- Contractor shall limit the extent of trench openings overnight and weekends to less than 50 feet.

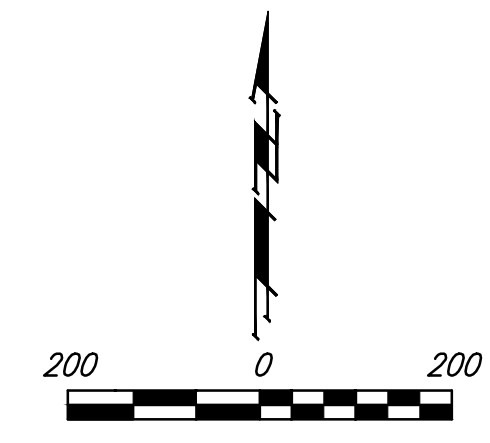
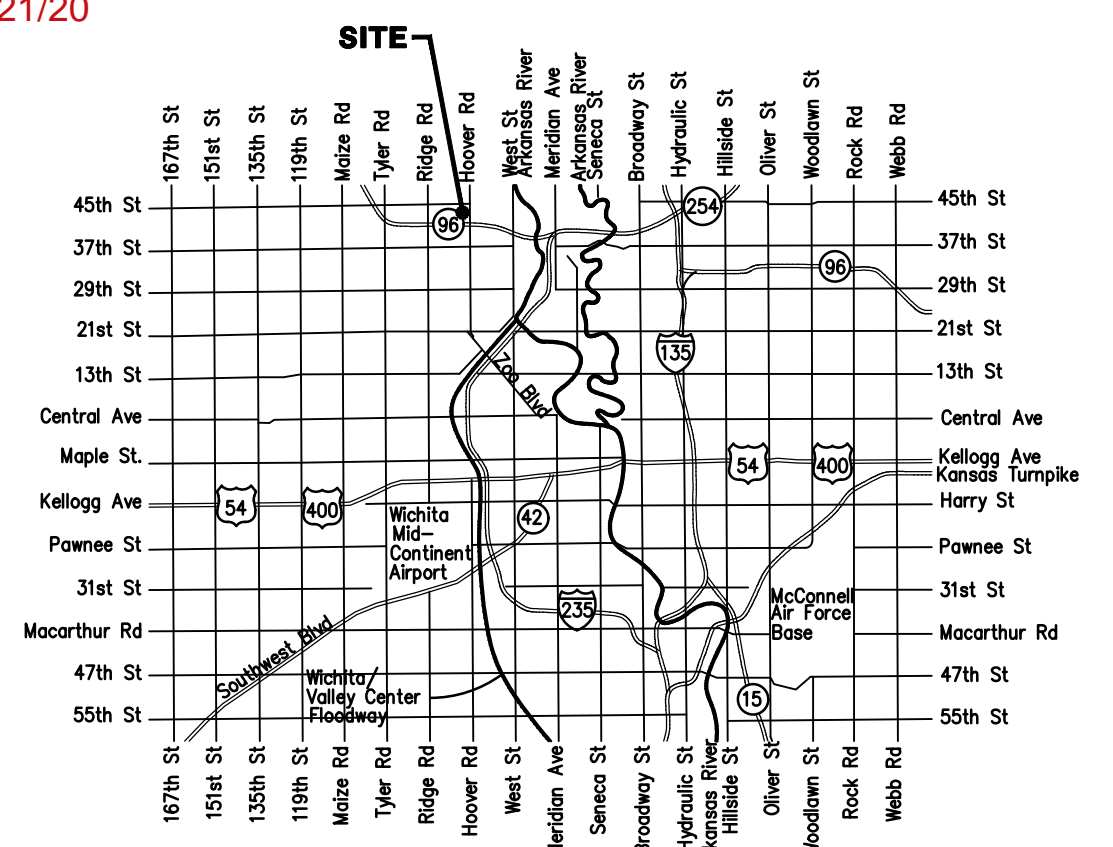
- All existing and proposed erosion control measures including silt fencing, erosion control mat, straw bales, inlet barriers, and const. entrance shall be maintained throughout construction by the contractor and until project is accepted by the City of Wichita. The on-site engineer shall complete weekly reports on the status of erosion control measures. The contractor shall be required to comply with maintenance and/or replacement of erosion control measures as determined by the on-site engineer until project is accepted by City of Wichita. Maintenance and/or replacement of erosion control measures to be paid by L.S. bid item "Maintain Existing BMPs".
- All disturbed areas are to be seeded as follows:  
Seed -- Rye grass; 5 lbs./1000 Sq. Ft.  
All costs associated with seeding including mobilization, preparation of ground, seeding, fertilizing, mulching, etc shall be included in the L.S. bid item "Seeding".
- The developer for this project is Jay W. Russell, (316)722-2417 and Ritchie Development, Kevin Mullen, (316)684-7300.

B. Woods - City of Wichita, Field Project Engineer  
Released Date: 5/4/2020  
apr 2/22/2021

WATER DISTRIBUTION SYSTEM  
to serve  
**EDGE WATER ADD. - PH. 4**  
CITY OF WICHITA, KANSAS

Gary Janzen, P.E. City Engineer  
Project Number 448-2019-90316  
O.C.A. Number 735655

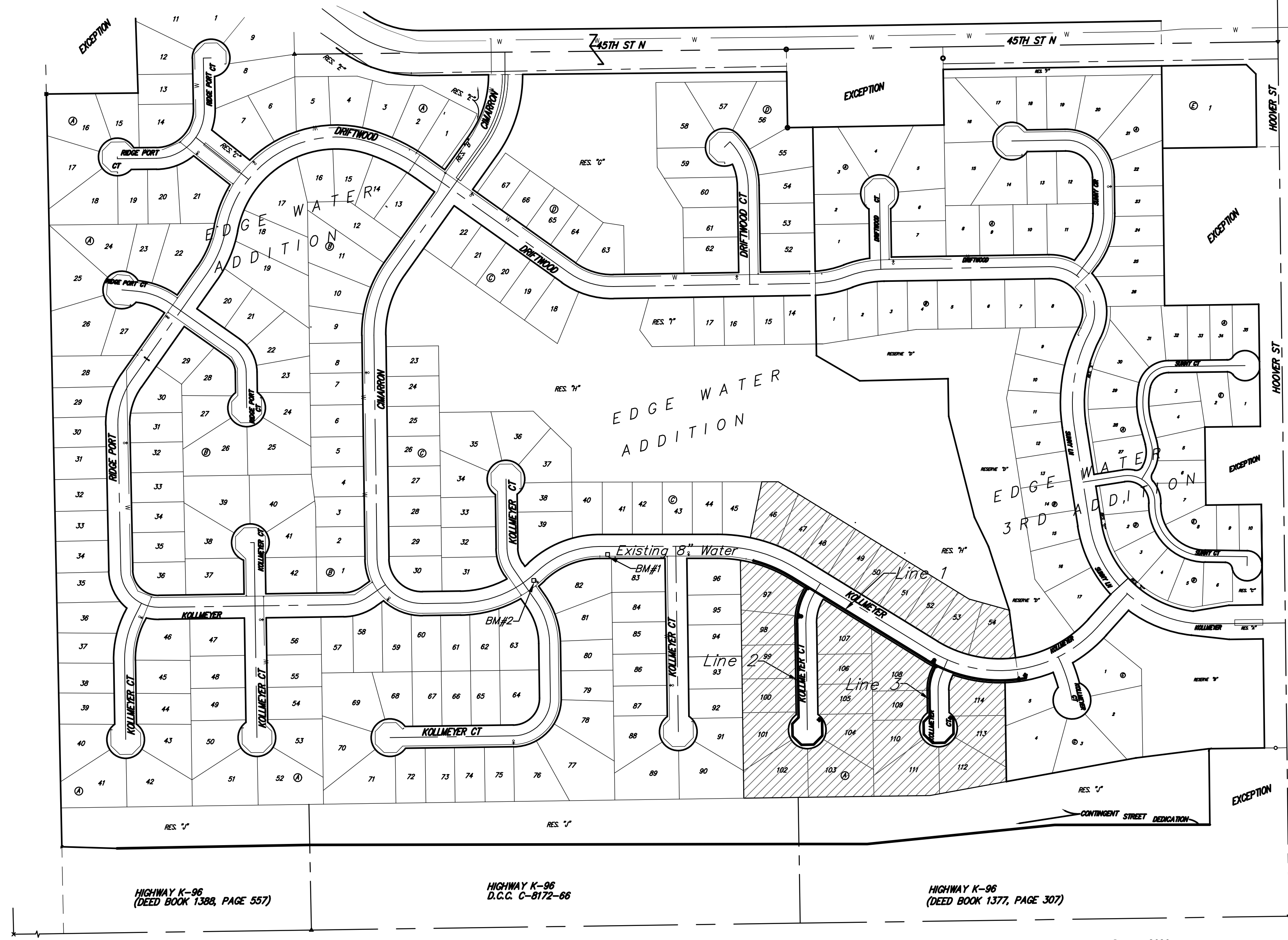
Company: City of Wichita		Contractor: Mies Construction Co.		
Inspector: David VanSickle, Baughman Co.				
Item	Type	Manufacturer	Quantity	Units
Pipe, WL 6"	C900 PVC	Sanderson	806	LF
Pipe, WL 8"	C900 PVC	Sanderson	882	LF
Pipe, WL 8"	DICL	American	11	LF
Fire Hydrant Assembly		Mueller	2	EA
Valve Assembly, Blowoff 2"			3	EA
Valve Assembly, 6"	Gate	Mueller	1	EA
Valve Assembly, 8"	Gate	Mueller	1	EA
Valve Assembly, Anchored 8" Special	Gate	Mueller	1	EA



Vicinity Map

Sheet Index

Title Sheet	1
Line 1	2
Line 2	3
Line 3	4
Erosion Control Plan	5
Std. Water Assembly Detail	6
Miscellaneous Water Details	7
Erosion Control BMP Details	8-12
Coordinate Sheet	13
Copy of Plat	14



Benchmarks

BM #1: Crows foot cut at SE corner of curb inlet south side of Kollmeyer near NE corner of Lot 82, Block A, Edge Water Addition.  
Elev. = 1335.36 NGVD29  
BM #2: Brass disc on top of curb by fire hydrant at SE corner of intersection of Kollmeyer and Kollmeyer Ct. (Lots 63-82, Block A) at the NW corner of Lot 82, Block A, Edge Water Addition.  
Elev. = 1336.61 NGVD29



Benefit District



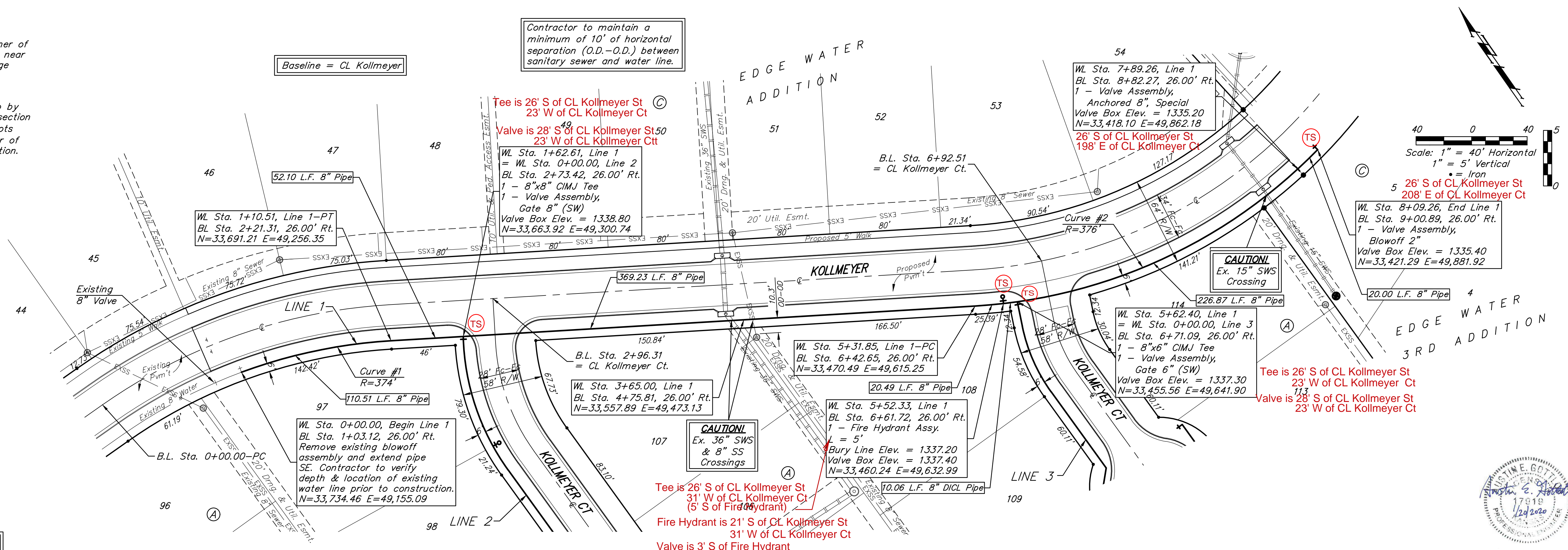
Baughman Company, P.A. 315 Ellis St. Wichita, KS 67211 P 316-262-7271 F 316-262-0148  
ENGINEERING | SURVEYING | PLANNING | LANDSCAPE ARCHITECTURE

**BENCHMARKS:**  
 BM #1: Crows foot cut at SE corner of curb inlet south side of Kollmeyer near NE corner of Lot 82, Block A, Edge Water Addition.  
 Elev. = 1335.36 NGVD29

BM #2: Brass disc on top of curb by fire hydrant at SE corner of intersection of Kollmeyer and Kollmeyer Ct. (Lots 63-82, Block A) at the NW corner of Lot 82, Block A, Edge Water Addition.  
 Elev. = 1336.61 NGVD29

Contractor to maintain a minimum of 10' of horizontal separation (O.D.-O.D.) between sanitary sewer and water line.

Baseline = CL Kollmeyer



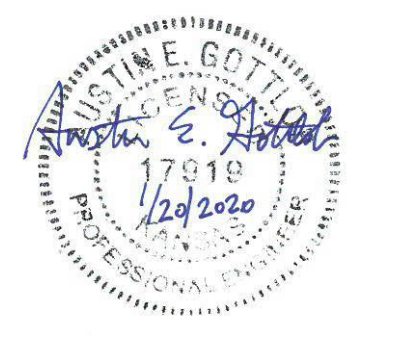
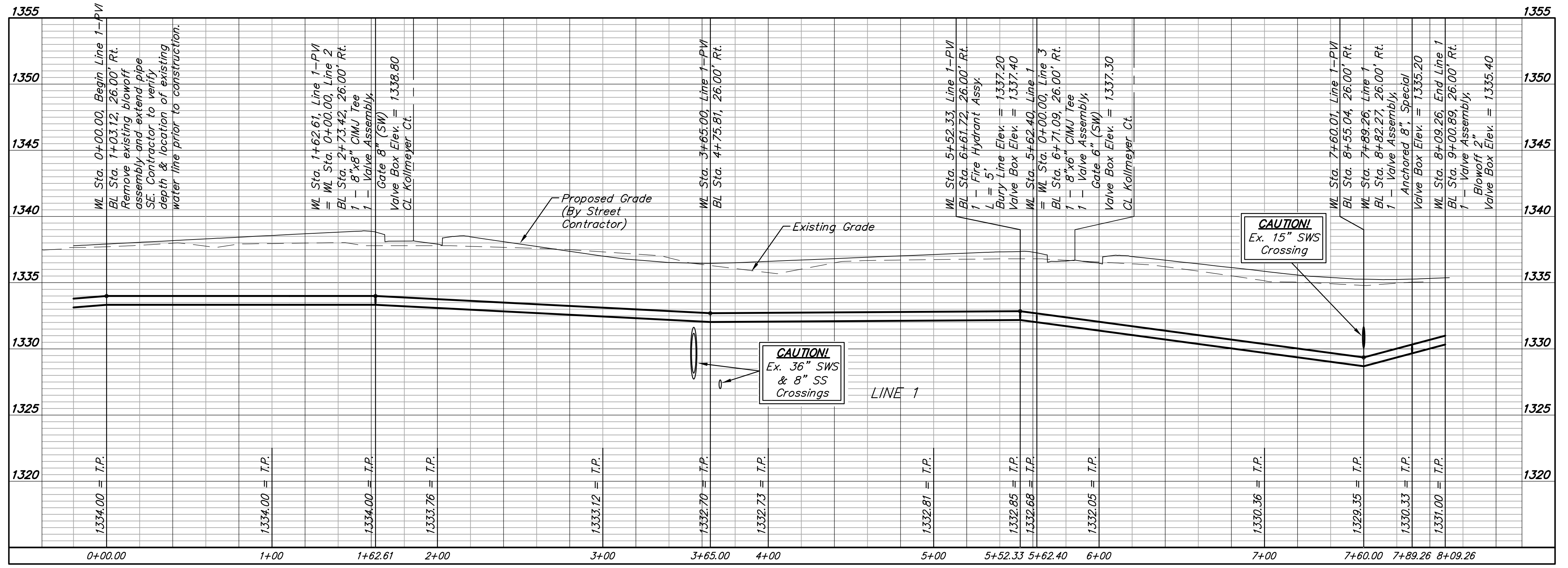
For radii under 300', contractor shall use short pipe lengths.

**Curve #1**  
 Curve Data Based on Waterline  
 Rad. = 374' Delta = 16°55'47" Tangent = 55.66'  
 Arc = 110.51' L.C. = 110.11' Def./Ft. = 4.59589 Min.

Station	Arc	8' Right	Defl.	Total Defl.
0+00.00	-	-	0°00'00"	0°00'00"
0+25.00	25.00'	24.46'	1°54'54"	1°54'54"
0+50.00	25.00'	24.46'	1°54'54"	3°49'48"
0+75.00	25.00'	24.46'	1°54'53"	5°44'41"
1+00.00	25.00'	24.46'	1°54'54"	7°39'35"
1+10.51	10.51'	10.28'	0°48'18"	8°27'53"

Rad. = 376' Delta = 42°16'24" Tangent = 145.36'  
 Arc = 277.41' L.C. = 271.17' Def./Ft. = 4.57157 Min.

Station	Arc	8' Right	Defl.	Total Defl.
5+31.85	-	-	0°00'00"	0°00'00"
5+50.00	18.15'	18.53'	1°22'58"	1°22'58"
5+52.33	2.33'	2.38'	0°10'40"	1°33'38"
5+62.40	10.07'	10.28'	0°46'02"	2°19'40"
5+75.00	12.60'	12.87'	0°57'36"	3°17'16"
6+00.00	25.00'	25.53'	1°54'17"	5°11'33"
6+25.00	25.00'	25.53'	1°54'18"	7°05'51"
6+50.00	25.00'	25.53'	1°54'17"	9°00'08"
6+75.00	25.00'	25.53'	1°54'17"	10°54'25"
7+00.00	25.00'	25.53'	1°54'18"	12°48'43"
7+25.00	25.00'	25.53'	1°54'17"	14°43'00"
7+50.00	25.00'	25.53'	1°54'17"	16°37'17"
7+75.00	25.00'	25.53'	1°54'18"	18°31'35"
7+89.26	14.26'	14.56'	1°05'11"	19°36'46"
8+00.00	10.74'	10.97'	0°49'06"	20°25'52"
8+09.26	9.26'	9.46'	0°42'20"	21°08'12"



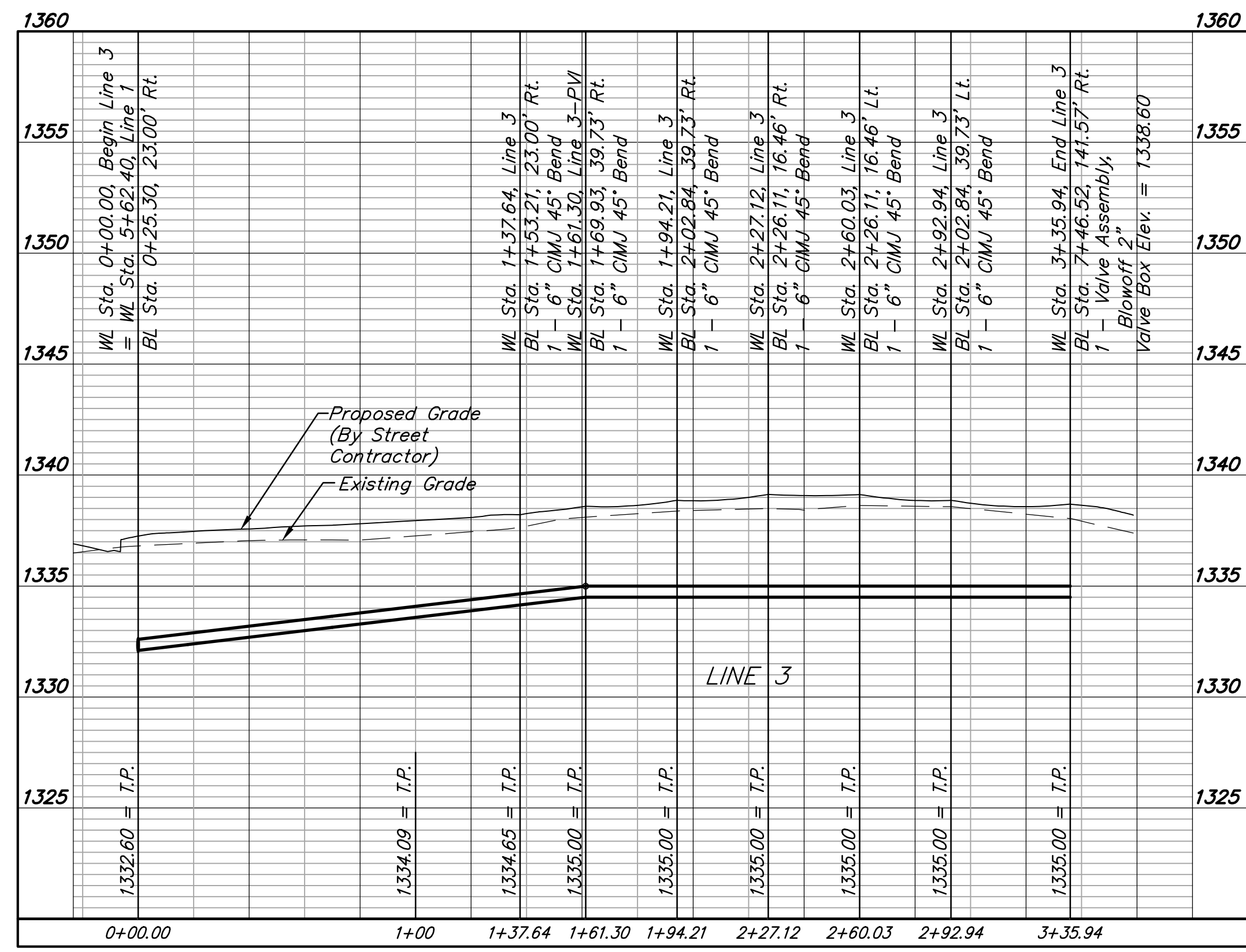
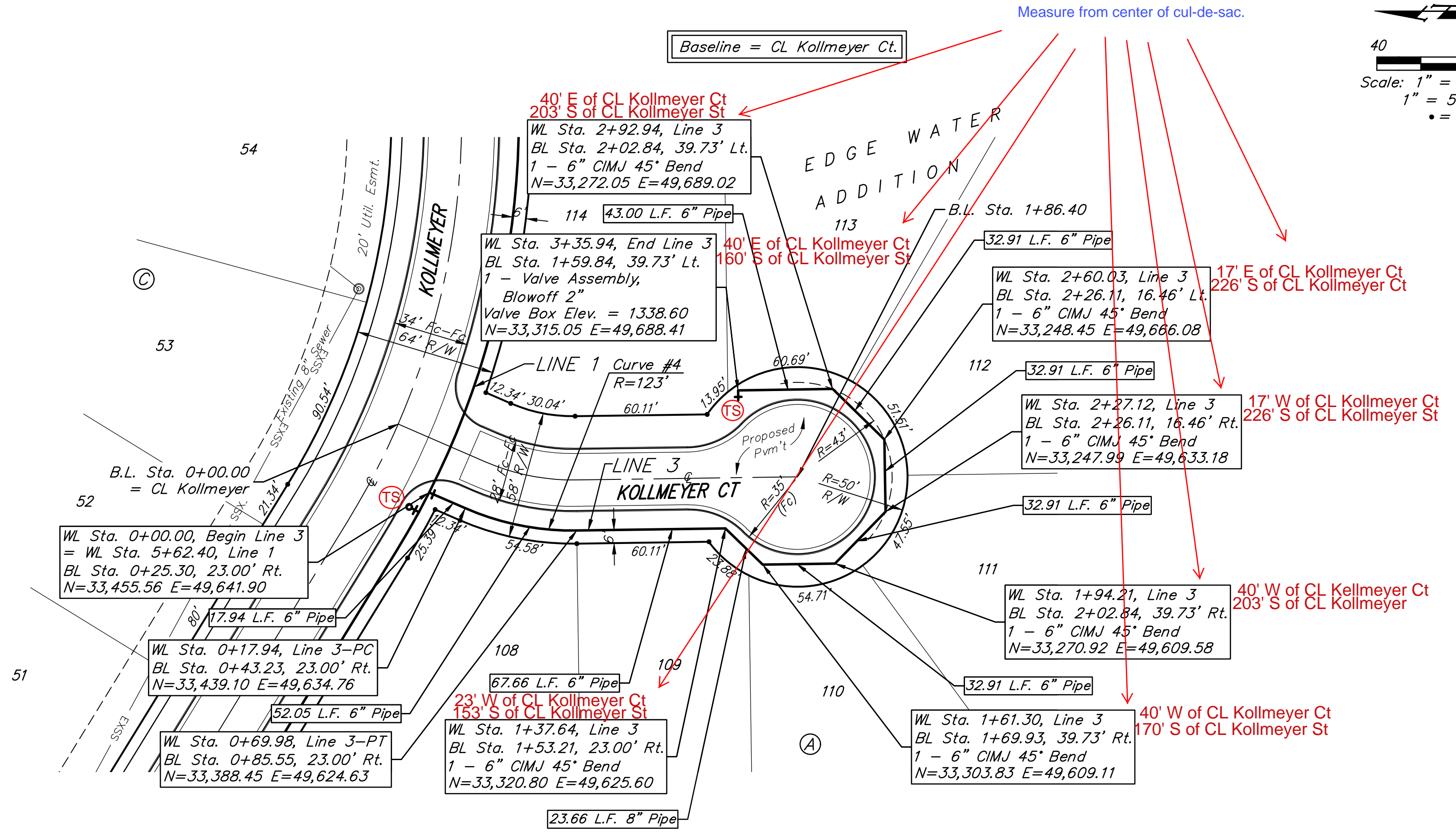


**BENCHMARKS:**  
 BM #1: Crows foot cut at SE corner of curb inlet south side of Kollmeyer near NE corner of Lot 82, Block A, Edge Water Addition.  
 Elev. = 1335.36 NGVD29

BM #2: Brass disc on top of curb by fire hydrant at SE corner of intersection of Kollmeyer and Kollmeyer Ct. (Lots 63-82, Block A) at the NW corner of Lot 82, Block A, Edge Water Addition.  
 Elev. = 1336.61 NGVD29

For radii under 300', contractor shall use short pipe lengths.

Curve #4				
Curve Data Based on Waterline				
Rad. = 123' Delta = 24°14'38" Tangent = 26.42'				
Arc = 52.04' L.C. = 51.66' Def./Ft. = 13.97611 Min.				
Station	Arc	Chord Lengths	Defl.	Total Defl.
0+17.94	-	-	0°00'00"	0°00'00"
0+25.00	7.06'	7.52'	1°38'40"	1°38'40"
0+50.00	25.00'	26.58'	5°49'24"	7°28'04"
0+69.98	19.98'	21.26'	4°39'15"	12°07'19"

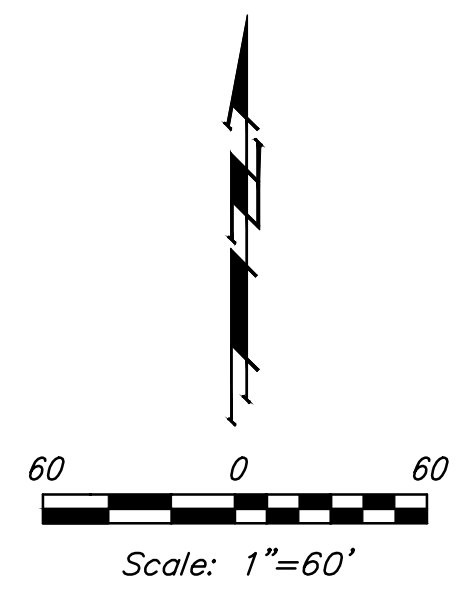
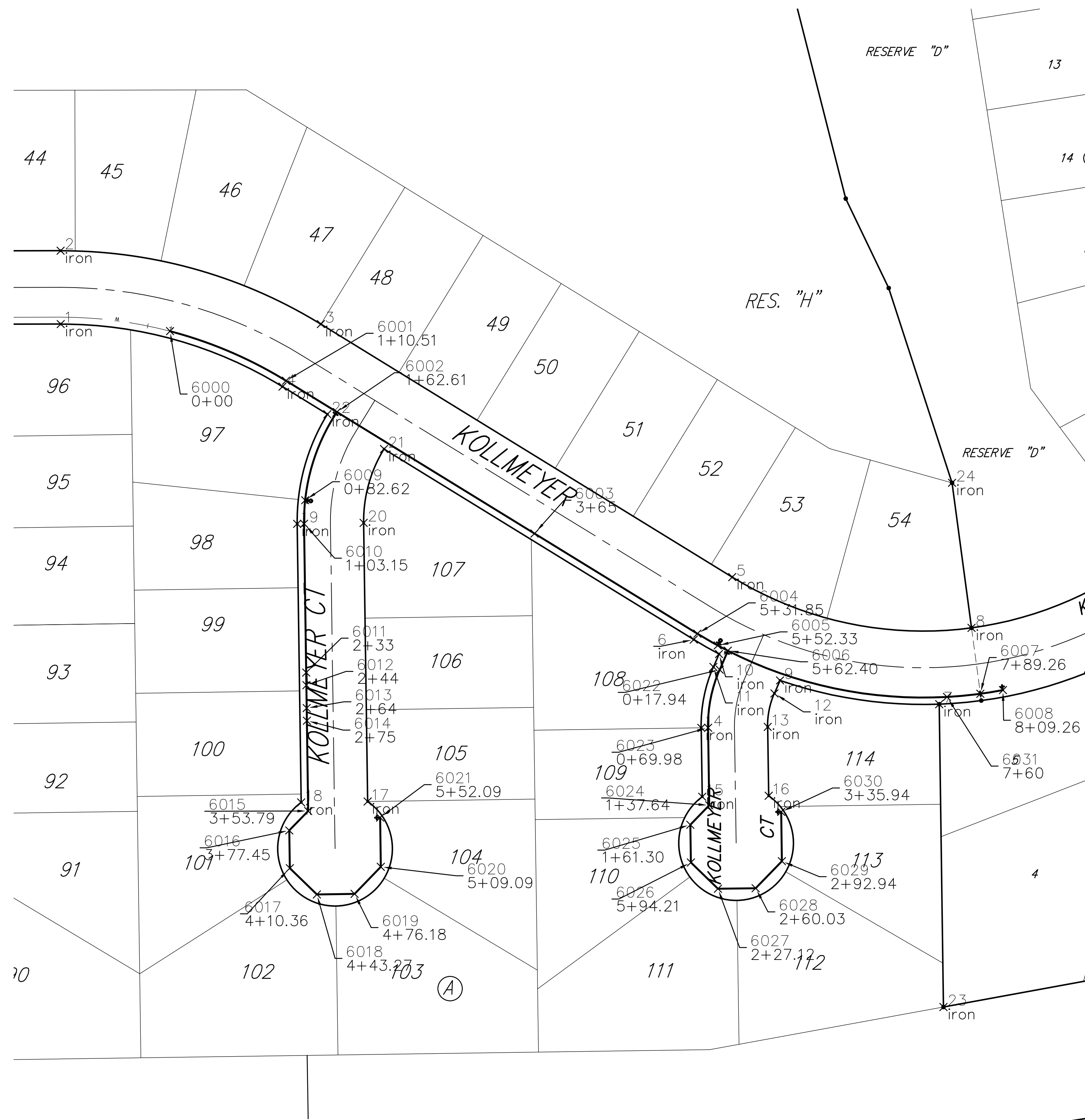


IRONS

Point Table			
Point #	Northing	Easting	Raw Description
1	33740.63	49059.72	iron
2	33804.63	49059.60	iron
3	33740.62	49286.74	iron
4	33686.10	49253.21	iron
5	33519.90	49645.64	iron
6	33465.38	49612.11	iron
7	33409.03	49826.25	iron
8	33475.59	49854.47	iron
9	33429.75	49687.38	iron
10	33452.81	49634.16	iron
11	33441.49	49629.26	iron
12	33418.43	49682.48	iron
13	33389.19	49676.63	iron
14	33388.36	49618.63	iron
15	33328.26	49619.49	iron
16	33329.08	49677.48	iron
17	33324.11	49327.52	iron
18	33323.28	49269.52	iron
19	33566.35	49266.07	iron
20	33567.18	49324.06	iron
21	33631.62	49341.80	iron
22	33662.00	49292.39	iron
23	33144.81	49830.01	iron
24	33602.14	49837.51	iron

WATER DISTRIBUTION SYSTEM

Point Table			
Point #	Northing	Easting	Raw Description
6000	33734.46	49155.09	0+00
6001	33691.21	49256.35	1+10.51
6002	33663.92	49300.74	1+62.61
6003	33557.89	49473.13	3+65
6004	33470.49	49615.25	5+31.85
6005	33460.24	49632.99	5+52.33
6006	33455.73	49641.80	5+62.40
6007	33418.10	49862.18	7+89.26
6008	33421.29	49881.92	8+09.26
6009	33586.93	49273.00	0+82.62
6010	33566.44	49272.07	1+03.15
6011	33436.60	49273.91	2+33
6012	33425.60	49274.07	2+44
6013	33405.61	49274.35	2+64
6014	33394.61	49274.51	2+75
6015	33315.82	49275.63	3+53.79
6016	33298.85	49259.14	3+77.45
6017	33265.95	49259.61	4+10.36
6018	33243.01	49283.21	4+43.27
6019	33243.48	49316.12	4+76.18
6020	33267.08	49339.06	5+09.09
6021	33310.07	49338.45	5+52.09
6022	33439.10	49634.76	0+17.94
6023	33388.45	49624.63	0+69.98
6024	33320.80	49625.60	1+37.64
6025	33303.83	49609.11	1+61.30
6026	33270.92	49609.58	5+94.21
6027	33247.99	49633.18	2+27.12
6028	33248.45	49666.08	2+60.03
6029	33272.05	49689.02	2+92.94
6030	33315.05	49688.41	3+35.94
6031	33415.35	49833.06	7+60



**Baughman Company, P.A.**  
 ENGINEERING, SURVEYING, PLANNING, LANDSCAPE ARCHITECTURE  
 APPROVED: *[Signature]*  
 DATE: 12/2/2020

EDGE WATER ADD. - PH. 4  
**COORDINATE SHEET**  
 WATER DISTRIBUTION SYSTEM

