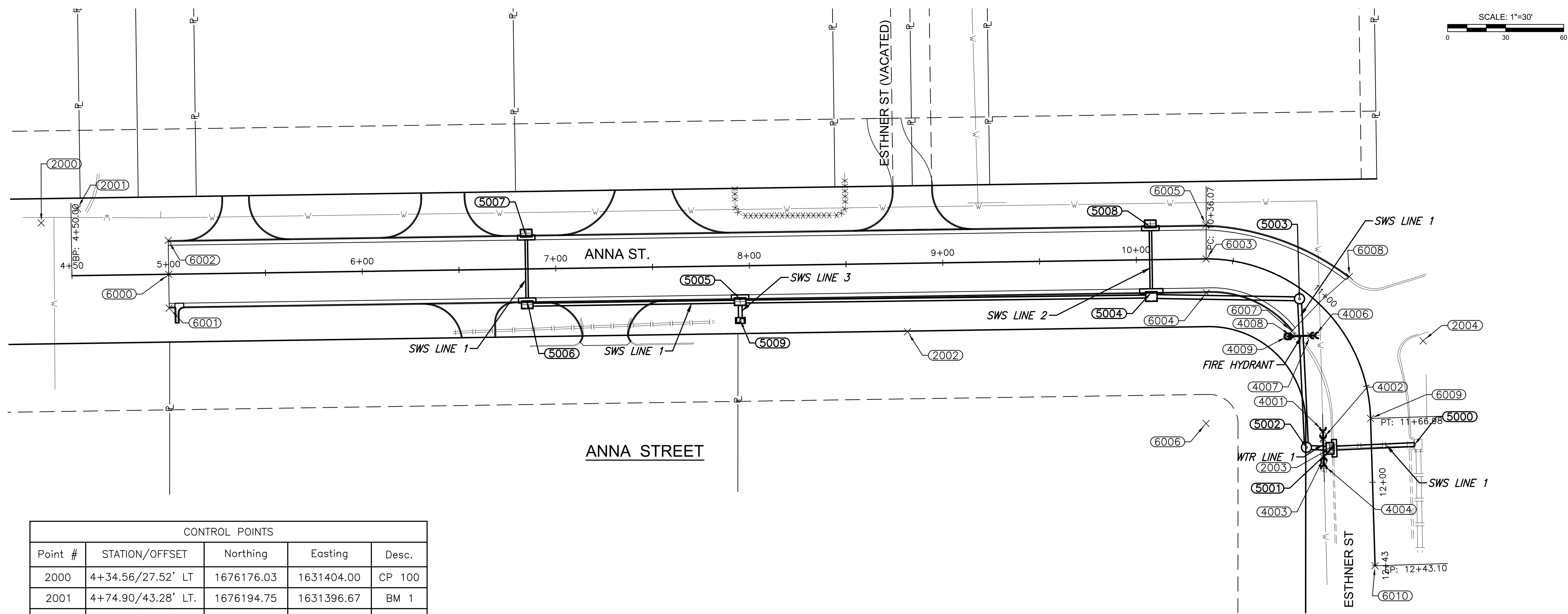


PLANS FOR
ANNA STREET PAVING IMPROVEMENTS
WICHITA, KS



CONTROL POINTS				
Point #	STATION/OFFSET	Northing	Easting	Desc.
2000	4+34.56/27.52' LT	1676176.03	1631404.00	CP 100
2001	4+74.90/43.28' LT.	1676194.75	1631396.67	BM 1
2002	9+02.79/26.54' RT.	1676623.57	1631460.24	CP 101
2003	11+70.42/1.27' LT.	1676842.84	1631519.91	BM 2
2004	11+37.93/58.16' LT.	1676889.96	1631464.95	CP 102

WATER POINTS				
Point #	Station/Offset	Northing	Easting	Desc.
4001	11+72.61/24.78' RT.	1676838.250	1631511.370	45° BEND
4002	11+76.54/24.79' RT.	1676838.356	1631515.299	45° VERT. BEND
4003	11+86.54/24.83' RT.	1676838.627	1631525.295	45° VERT. BEND
4004	11+90.47/24.84' RT.	1676838.733	1631529.224	45° VERT. BEND
4006	11+11.88/12.60' RT.	1676834.229	1631462.127	CONNECT TO EX. 6" VALVE 45° VERT. BEND
4007	11+10.07/14.58' RT.	1676831.730	1631462.216	45° VERT. BEND
4008	11+02.25/21.73' RT.	1676822.313	1631462.549	45° VERT. BEND
4009	10+99.88/23.53' RT.	1676819.815	1631462.638	45° VERT. BEND & FH

SWS POINTS				
Point #	Station/Offset	Northing	Easting	Desc.
5000	11+81.15/22.31' LT.	1676885.575	1631518.458	EX. INLET
5001	11+81.78/20.26' RT.	1676843.048	1631520.399	TYPE 1 INLET
5002	11+80.90/33.56' RT.	1676829.727	1631519.924	SWS MH
5003	10+90.74/4.57' RT.	1676826.118	1631443.233	SWS MH
5004	10+07.50/17.00' RT.	1676749.565	1631440.014	TYPE 1 INLET
5005	7+95.00/17.00' RT.	1676537.089	1631443.167	TYPE 1 INLET
5006	6+85.00/17.00' RT.	1676427.101	1631444.800	TYPE 1 INLET
5007	6+85.00/17.00' LT.	1676426.596	1631410.803	TYPE 1 INLET
5008	10+07.50/17.00' LT.	1676749.061	1631406.018	TYPE 1 INLET
5009	7+94.88/28.26' RT.	1676537.140	1631454.425	DOUBLE DROP INLET

PAVING POINTS				
Point #	Station/Offset	Northing	Easting	Desc.
6000	5+00.02/1.06' LT.	1676241.87	1631430.55	CL
6001	5+00.13/8.51' RT.	1676242.13	1631448.04	BC
6002	5+00.13/26.32' LT.	1676241.61	1631413.05	BC
6003	10+36.08/1.40' LT.	1676777.88	1631422.59	CL
6004	10+36.21/7.91' RT.	1676778.01	1631440.09	BC
6005	10+36.08/17.50' LT	1676777.75	1631405.09	BC
6006	10+34.96/75.40' RT.	1676777.88	1631507.59	RP
6007	10+91.90/12.60' RT.	1676822.09	1631459.93	BC
6008	10+96.94/27.76' LT.	1676851.90	1631431.70	BC
6009	11+65.59/0.05' LT.	1676862.84	1631504.98	CL
6010	12+41.44/0.05' LT.	1676865.18	1631581.06	CL

©2021 MKEC Engineering
All Rights Reserved
www.mkec.com
These drawings and their contents, including, but not limited to, all concepts, designs, & ideas are the exclusive property of MKEC Engineering (MKEC), and may not be used or reproduced in any way without the express consent of MKEC.

BUBBLE MAP

PROJECT NO. 1901010483

DATE FEB. 2021

SCALE 1"=30'

DESIGNED DRAWN CHECKED
JRA DM JRA

NO. REVISION DATE

SHEET NO.

8 OF 38