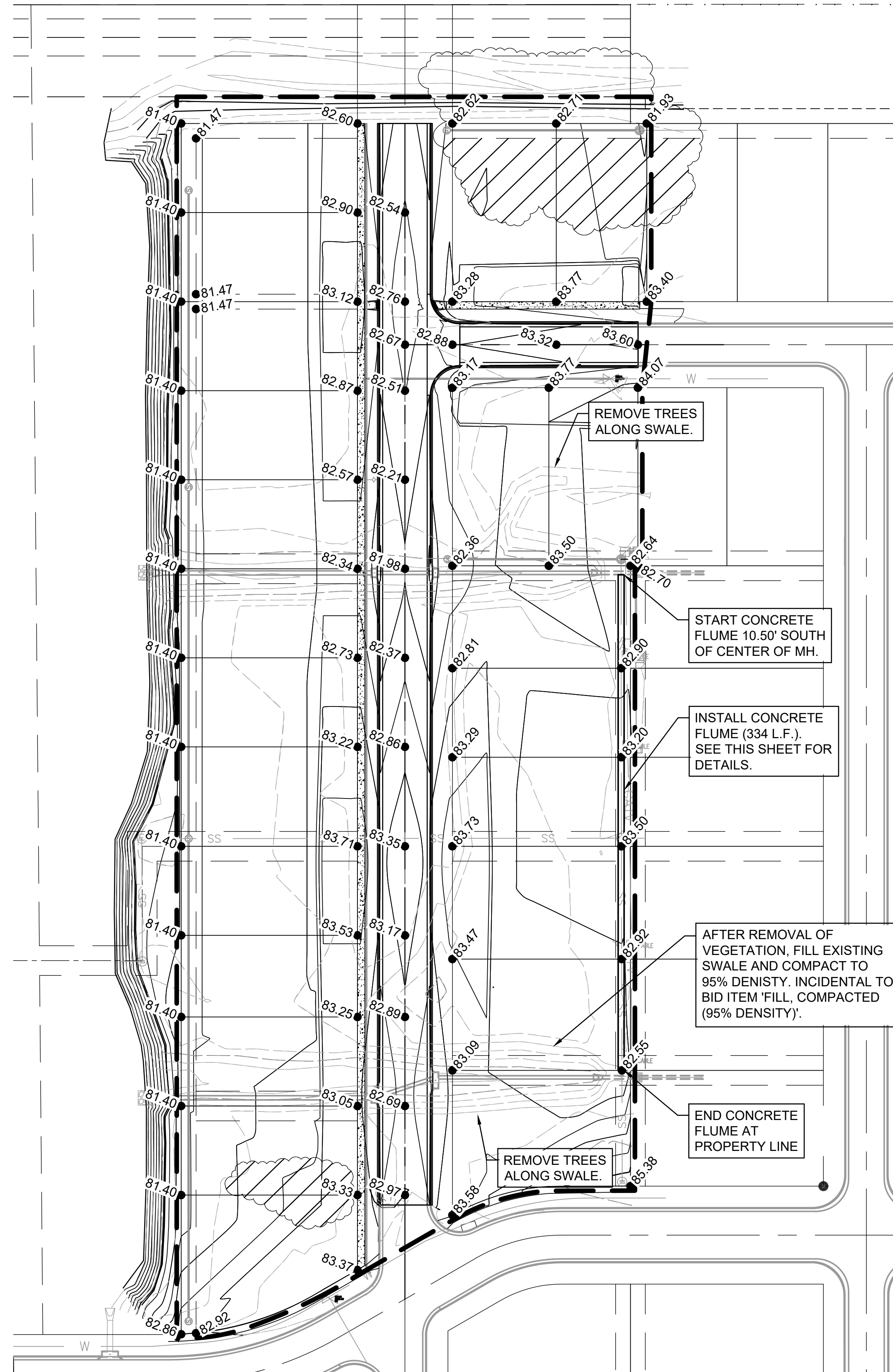
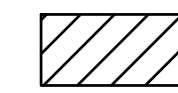


File: L:\2020\20T41006 - Legacy 3rd Addition Imp Last Phase\Drawings\C3D\Paving Sheets\20T41006 GRADING PLAN.dwg Last Save: 2/1/2021 3:30 PM Last saved by: MCarraeraPiedra
 Last plotted by: Carraera-Piedra, Mariela Plot Date: 2/2/2021 12:45 PM Plotter used: None



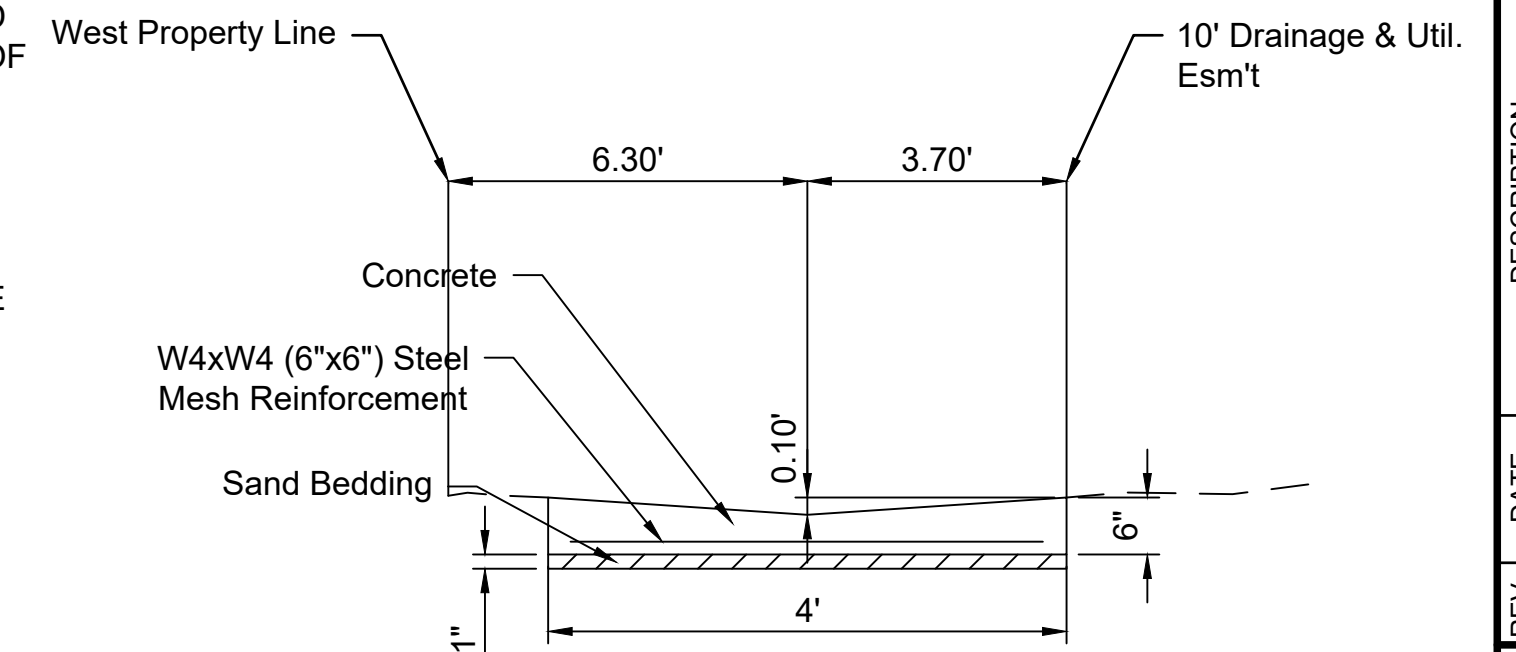
 REMOVE TREES. ALL TREE REMOVAL SUBSIDIARY TO THE BID ITEM 'SITE CLEARING'.

NOTE:

1. TOPSOIL ON THE SITE SHALL BE STRIPPED AND STOCKPILED AT AN ON-SITE LOCATION COORDINATED WITH THE FIELD ENGINEER. FOLLOWING GRADING OPERATIONS, A MINIMUM OF 4" OF TOPSOIL SHALL BE PLACED IN ALL EASEMENT AND RESERVE AREAS OF THE SITE. REMAINING TOPSOIL SHALL REMAIN IN THE STOCKPILE FOR PLACEMENT IN LOTS AND STREET AREAS BY OTHERS AT A FUTURE DATE.
2. COST OF TOPSOIL STRIPPING AND PLACEMENT IS INCIDENTAL TO THE BID ITEM FOR "EXCAVATION". ALL OTHER EXCESS EXCAVATION FROM CONSTRUCTION ACTIVITIES SHALL REMAIN ON-SITE IN A STOCKPILE COORDINATED WITH THE FIELD ENGINEER.
3. TREE TRIMMING AND REMOVAL SHALL ONLY BE DONE WHERE INDICATED IN THIS PLAN SET. TREES NOT INDICATED TO BE TRIMMED OR REMOVED IN THESE PLANS SHALL BE PROTECTED FROM DAMAGE UNLESS OTHERWISE DIRECTED BY THE FIELD ENGINEER. IF ADDITIONAL TREE REMOVAL IS REQUIRED TO ACCESS POND OR SWALE AREAS, IT WILL BE ALLOWED BUT TREE REMOVAL MUST BE COORDINATED WITH THE FIELD ENGINEER. ANY ADDITIONAL TREE REMOVAL SHALL BE INCIDENTAL TO THE BID ITEM FOR "SITE CLEARING".
4. BRUSH GENERATED BY THE TRIMMING AND REMOVAL OF THE TREES MAY BE BURNED ON-SITE BUT THE LOCATION AND METHOD FOR BURNING WILL BE SUBJECT TO THE APPROVAL OF THE CITY OF WICHITA AND SEDGWICK COUNTY. IT SHOULD BE ASSUMED THAT AN AIR CURTAIN SYSTEM WILL BE REQUIRED FOR ON-SITE BURNING.
5. CONTRACTOR TO REGRADE WEST EASEMENT TO EDGE OF POND. CONTRACTOR TO CLEAR ALL VEGETATION AND PROVIDE POSITIVE DRAINAGE INTO POND. COST SUBSIDIARY TO THE BID ITEM FOR 'EXCAVATION'.

Seeding Notes:

1. All disturbed areas shall be seeded, fertilized, and mulched according to City of Wichita specifications.
2. All disturbed areas in the Right-of-Way and in Reserves 'A' and 'B' - except the areas under paving and the areas in the ponds below the static pool elevation - shall be seeded with Fescue seeding mix. If the area is disturbed after seeding, the Contractor shall re-seed, -fertilize, and -mulch the affected area with no additional payment.
3. The Contractor may use a Rye mix as a temporary seeding mix during construction activities, but the Right-of-Way and Reserves 'A' and 'B' must have a Fescue seeding mix at the completion of construction activities. All other areas may be seeded using a Rye mix.
4. All seeding shall be bid as 'Project Seeding, L.S.'



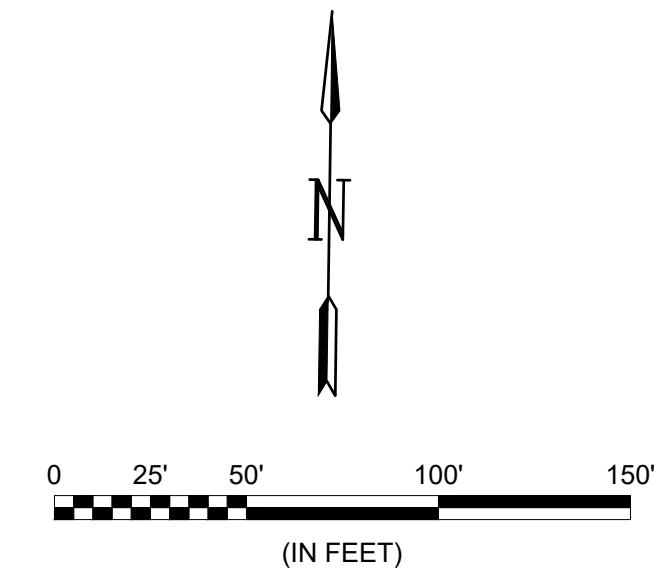
CONCRETE DRAIN DETAIL
NOT TO SCALE

NOTE:
EARTHWORK SHALL BE FILLED OR EXCAVATED TO ENSURE FLUME MEETS PROPOSED ELEVATIONS.

Seeding Schedule				
Seeding Mix	Application Rate	Fertilizer	Application Rate	Seeding Season
Fescue	8 lb PLS/1000 sf	12-24-12 N-P-K	45 lb/Ac	Dec 1 - May 1 or Aug 15 - Oct 15
Rye	5 lb/1000 sf			

Seeding Areas:
(For Information Only)

Fescue: 6,775 S.Y.
Rye: 19,597 S.Y.



© 2021 GARVER, LLC
THIS DOCUMENT, ALONG WITH THE IDEAS AND DESIGNS CONVEYED HEREIN, SHALL BE CONSIDERED INSTRUMENTS OF PROFESSIONAL SERVICE AND ARE PROPERTY OF GARVER, LLC. ANY USE, REPRODUCTION, OR DISTRIBUTION OF THIS DOCUMENT, ALONG WITH THE IDEAS AND DESIGN CONTAINED HEREIN, IS PROHIBITED UNLESS AUTHORIZED IN WRITING BY GARVER, LLC OR EXPLICITLY ALLOWED IN THE GOVERNING PROFESSIONAL SERVICES AGREEMENT FOR THIS WORK.

8535 E. 21st Street N.
Suite 130
Wichita, KS 67206
(316) 264-8008



BY	DESCRIPTION	DATE	REV.



CITY OF WICHITA
WICHITA, KANSAS
LEGACY 3RD
ADDITION
PAVING

GRADING PLAN

JOB NO.: 20T41006
DATE: Feb 2021
DESIGNED BY: #
DRAWN BY: #

BAR IS ONE INCH ON ORIGINAL DRAWING
IF NOT ONE INCH ON THIS SHEET, ADJUST SCALES ACCORDINGLY.

DRAWING NUMBER

SHEET NUMBER **12 OF 24**