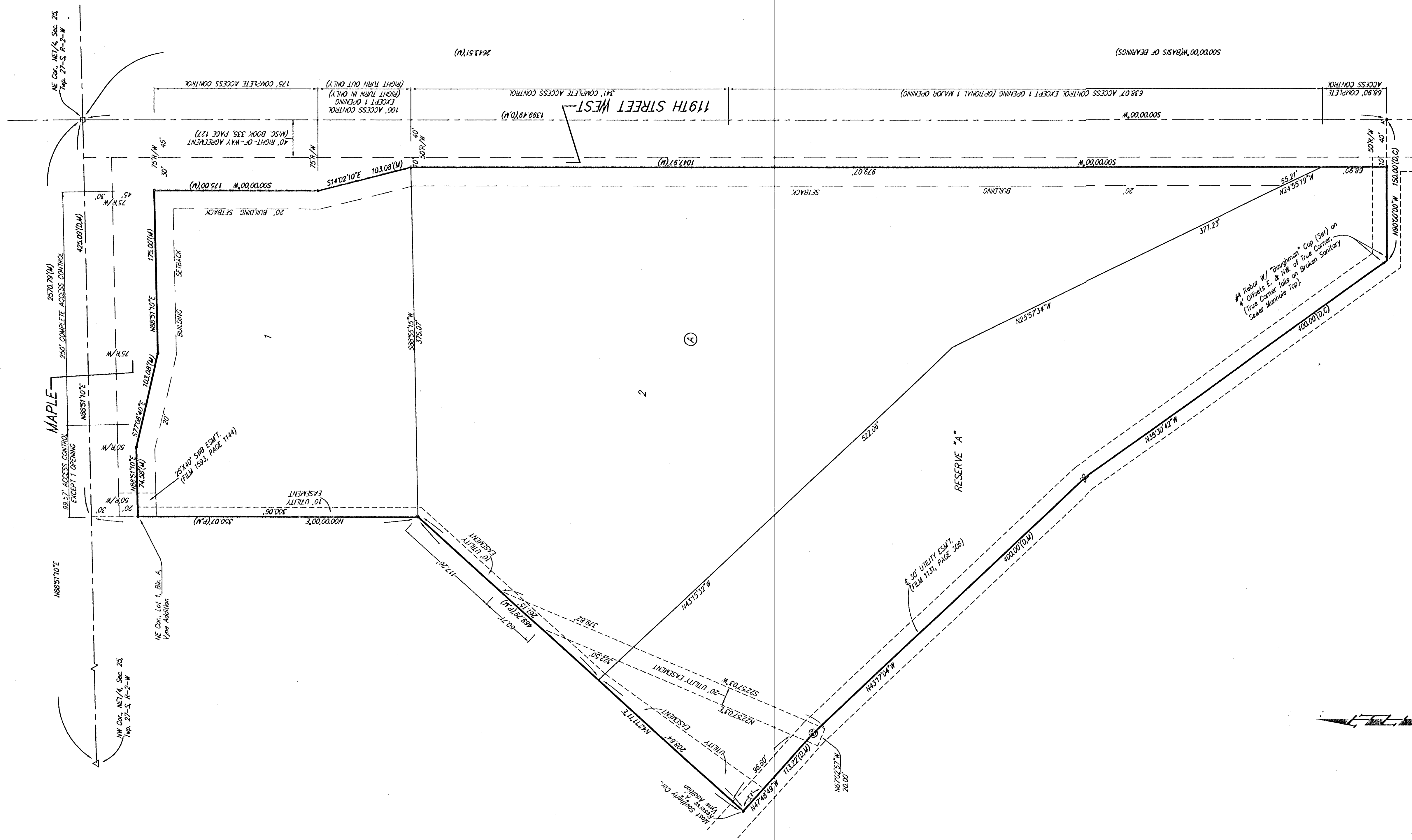


THUNDERBIRD OFFICE PARK

AN ADDITION TO WICHITA, SEDGWICK COUNTY, KANSAS

State of Kansas) SS
Sedgwick County) We, Boughtman Co
addressed county and state do hereby certify the
platted "THUNDERBIRD OFFICE PARK", an Addition
County, Kansas and that the accompanying plat
exhibit of the property surveyed, described as be
of the NE 1/4 of Sec. 25, Twp. 27-S, R-2-W of
County, Kansas; thence S00°00'00"W along the e
1399.49 feet; thence N90°00'00"W 150.00 feet; t
400.00 feet; thence N43°17'04"W 400.00 feet; t
113.22 feet to the most southerly corner of Res.
Wichita, Sedgwick County, Kansas; thence N42°11'
line of said Reserve "A" and along the southeast
lot Line Addition, 469.79 feet to the most eas
Lot 1; thence N00°00'00"E along the east line o
extended north, 350.07 feet to a point on the n
thence N88°51'10"E along the north line of said l
point of beginning, all being subject to road rig

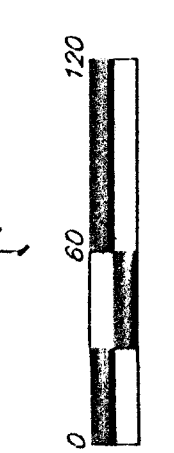
Existing public easements and dedications
being vacated by virtue of K.S.A. 12-512(b).



LOT	BLOCK	CITY DATUM	NGVD	ELEVATION
1-2	A	134.6	1322.0	

- = 4" Round W/ "Boughtman" Cap (Found)
- = 4" Round W/ "Boughtman" Cap (Set)
- = 12" Iron in Conc. in 618 Steel Bar (Found)
- △ = 12" Iron (Found)
- ⊙ = " on Sanitary Sewer Manhole Lid (Set)
- ⊙ = " Alignment Notches on Manhole Rim (N.S.E.W)
- ⊙ = " on Concrete Sanitary Sewer Manhole Field Cap (Set)
- N = "x" "x" "x" (Set)

Benchmarks:
City of Wichita Benchmark Disc -
1/2 MI. South of Maple &
35' E. of E. 19th St. West
Ck. = 136.06 City datum



2015195

Michael G. Conrey
Michael G. Conrey

Know all men by these presents, that the undersigned, have caused the land in the survey platted into Lots, a Block, Streets, and a Reserve "THUNDERBIRD OFFICE PARK", an Addition to Wichita, Kansas. The utility easements are hereby granted, construction and maintenance of all public utilities hereby dedicated to and for the use of the public, hereby reserved for floodway drainage purposes. No buildings or other obstructions shall be constructed or within said Reserve "A", nor shall any fill, cut, or channel, or any other work be carried on with the City Engineer of the City of Wichita, Kansas. The rights of access shall be as depicted on the locations hereby granted to the City of Wichita, Kansas. The Minimum Building Pad Elev. Wichita, Kansas. The Minimum Building Pad Elev. opening to the structures shall be as indicated c

Spring Creek Resources, LLC

Charles W. Atkins II
Charles W. Atkins II

William Owen
William Owen

State of Kansas) SS
Sedgwick County) The foregoing instrument, this 28th day of February, 2002, by Charles W. Atkins II, of Spring Creek Resources, LLC, on behalf of the

JUDITH M. TERHUNE
Notary Public, State of Kansas
My Comm. Expires: 11-7-2005

My App't. Exp. 11-7-2005

State of Kansas) SS
Sedgwick County) The foregoing instrument, this 11th day of March, 2002, by Judith M. Terhune, husband and wife,

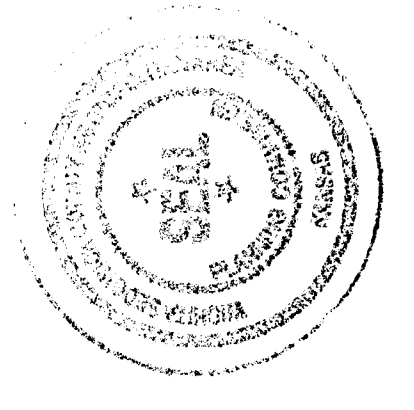
JUDITH M. TERHUNE
Notary Public, State of Kansas
My Comm. Expires: 11-7-2005

My App't. Exp. 11-7-2005

This plat of "THUNDER Addition to Wichita, Sedgwick County, Kansas has approved by the Wichita-Sedgwick County Metropolitan Commission, Wichita, Kansas.

Dated this 28th day of December, 2001, at Wichita-Sedgwick County Metropolitan Area Plann.

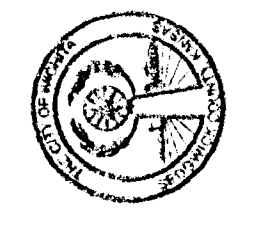
John D. Michaels
John D. Michaels
Marvin S. Kraut



This plat approved and shown hereon accepted by the City Council of the City of Wichita, Kansas, this 2nd day of April, 2002.

At the Direction of the City

Pat Burnett
Pat Burnett



Reviewed in accordance with this Ordinance of March 2002.

Tricia L. Rabella
Tricia L. Rabella, Deputy County Sur Sedgwick County,



Entered on transfer record of April 2002.

Don Brace
Don Brace

State of Kansas) SS
Sedgwick County) This is to certify that I filed for record in the office of the Register of Deeds of Sedgwick County, Kansas, this 2nd day of April, 2002 at 1:00 o'clock P.M.



Bill Meek
Bill Meek

Shirley Ann
Shirley Ann