

APPROACH & ALLEY BETWEEN TOPEKA & EMPORIA STREETS

FROM THE NORTH LINE PAWNEE 180' NORTH
7" CONCRETE PAVEMENT 24' WIDE

PRIVATE PROJECT NO. 472-76-245-80001-000-000-038

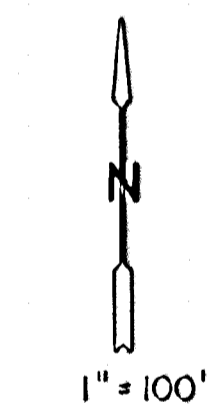
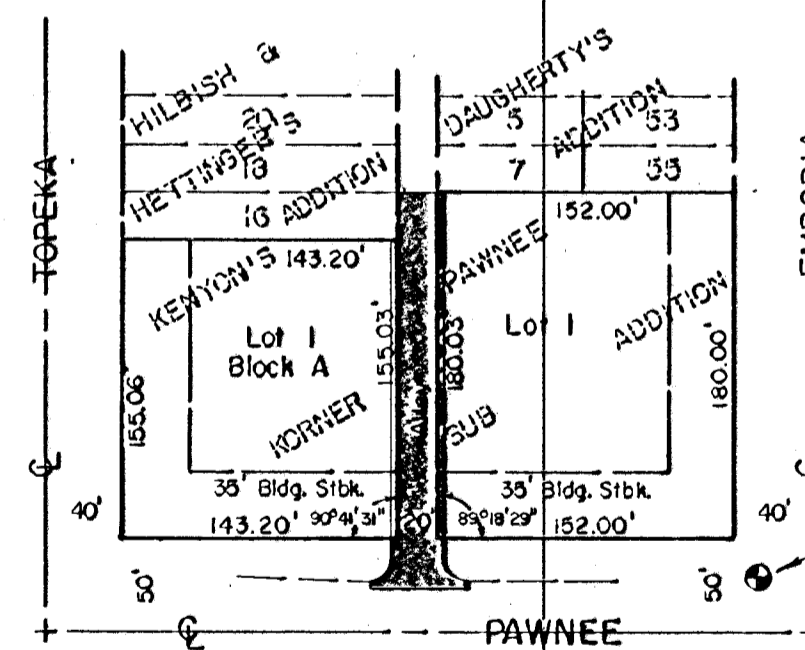
*Active project
7-90*

M. E. LINDEBAK

CITY ENGINEER

JANUARY, 1988

NOTE - Construction of Storm Water Sewer No. 385 shall be completed prior to the construction of Approach & Alley project.



Benchmark - "x" on Conc. Walk,
30' N. & 27' W. of C Pawnee
and Emporia.
Elev. = 97.74 City Datum

LEGEND

- W = Water
- SS = Sanitary Sewer
- P.P. = Power Pole
- T.S.B. = Telephone Splice Box
- O.E. = Overhead Electric
- U.T. = Underground Telephone
- O.T. = Overhead Telephone
- S.W.S. = Storm Water Sewer
- O.C. = Overhead Cable

Sheet No.

1
2

INDEX

Description
Cover Sheet
Alley Pavement Plan

APPROVED AS NOTED
By CITY ENGINEER OF WICHITA

- Sanitary Sewers _____
- Storm Sewers _____
- Driveway Approaches _____
- Water Mains _____
- Paving VRH 5/3/88

NOTE TO CONTRACTOR

This project will be constructed under the supervision of the CITY ENGINEER and conforming to the SPECIFICATIONS of the CITY OF WICHITA. The CONTRACTOR will pay the City of Wichita for all costs of plan review, inspection and booking per contract.



**MOEHRING & ASSOCIATES
CONSULTING ENGINEERS
WICHITA**