

FHWA REGION NO.	STATE	PROJECT NO.	YEAR	SHEET NUMBER	TOTAL SHEETS
7	KANSAS	81-87 K-5985-01	1997	2	18

GENERAL NOTES:

- UTILITY SERVICE LINES, POLES, VALVE BOXES, METERS AND ET CETERA ARE TO BE ADJUSTED AS NECESSARY BY OTHERS PRIOR TO CONSTRUCTION UNLESS THE PLANS SPECIFICALLY CALL FOR THEIR ADJUSTMENT BY THE CONTRACTOR OR UNLESS THE PLANS SPECIFICALLY IDENTIFY A UTILITY TO BE ADJUSTED BY ITS OWNER DURING CONSTRUCTION. EXISTING UTILITIES AND THEIR LOCATION, AS SHOWN ON THE PLANS REPRESENT THE BEST INFORMATION OBTAINABLE FOR DESIGN. THE CONTRACTOR WILL BE REQUIRED TO WORK AROUND EXISTING UTILITIES WITHIN THE RIGHT-OF-WAY WHICH DO NOT CONFLICT WITH PROPOSED CONSTRUCTION.
- THE CONTRACTOR SHALL PROVIDE A MINIMUM OF FORTY-EIGHT (48) HOURS ADVANCE NOTICE TO ALL UTILITY OWNERS PRIOR TO CONSTRUCTION UNLESS THE PLANS SPECIFICALLY IDENTIFY A UTILITY TO BE ADJUSTED BY ITS OWNER DURING CONSTRUCTION. ANY UTILITY CARELESSLY DAMAGED BY CONSTRUCTION OPERATION SHALL BE REPAIRED OR REPLACED AT CONTRACTOR'S EXPENSE. THE CONTRACTOR SHALL COORDINATE WITH CONTRACTORS FOR UTILITY COMPANIES AND OTHER AGENCIES FOR MINIMUM INCONVENIENCE TO GENERAL PUBLIC.
- CONTRACTOR SHALL AVOID UNCOVERING THE EXISTING WATERLINES UNLESS ABSOLUTELY NECESSARY. UNCOVERING SHALL BE DONE ONLY IN THE PRESENCE OF THE ENGINEER.
- ALL ADJACENT BUILDINGS, STRUCTURES, PARKING LOTS, DRIVES, STREET PAVEMENTS, UTILITY LINES UTILITY STRUCTURES AND APPURTENANCES, OTHER THAN SHOWN FOR REPLACEMENT SHALL BE PROTECTED FROM DAMAGE DURING CONSTRUCTION OF THE PROJECT. ITEMS DAMAGED BEYOND THE LIMITS SHOWN ON THE DRAWINGS SHALL BE REMOVED AND REPLACED BY THE CONTRACTOR AT THE CONTRACTOR'S EXPENSE.
- A SAW CUT OF FULL DEPTH OF EXISTING SURFACE COURSES SHALL BE PROVIDED AT LOCATIONS WHERE PROPOSED CONSTRUCTION ADJUTS AN EXISTING SURFACE COURSE OR PAVEMENT FOR WHICH PARTIAL REMOVAL OF THAT SURFACE OR PAVEMENT IS REQUIRED. SAWED JOINTS TO FACILITATE REMOVAL WITHIN THREE (3) FEET OF AN EXISTING JOINT WILL NOT BE PERMITTED, AND FOR SUCH INSTANCES THE LIMITS OF REMOVAL SHALL EXTEND TO THE EXISTING JOINT. SUCH SAW CUTS WILL NOT BE PAID FOR DIRECTLY AND THIS COST SHALL BE CONSIDERED AS SUBSIDIARY TO THE REMOVAL OF THE SURFACE OR PAVEMENT.
- RUBBLE RESULTING FROM THE REMOVAL OF MISCELLANEOUS STRUCTURES AND EXCAVATION WHICH IS TO BE WASTED SHALL BE DISPOSED OF ON SITES TO BE PROVIDED BY THE CONTRACTOR. THESE SITES SHALL BE APPROVED BY THE ENGINEER AS TO SUITABILITY, APPEARANCE AND SITE LOCATION. LOCATIONS THAT, IN THE OPINION OF THE ENGINEER, LEAVE AN UNSIGHTLY APPEARANCE WILL NOT BE APPROVED.
- THE CONTRACTOR SHALL BE RESPONSIBLE FOR PRESERVING PROPERTY IRONS SHOWN ON THE PLANS. THE CONTRACTOR WILL BE REQUIRED TO RE-ESTABLISH ANY SHOWN PROPERTY IRONS WHICH ARE DAMAGED OR DESTROYED BY CONSTRUCTION OPERATIONS. SUCH IRONS SHALL BE RE-ESTABLISHED BY A LICENSED LAND SURVEYOR IN ACCORDANCE WITH STATE LAW. THIS WORK SHALL BE SUBSIDIARY TO OTHER ITEMS IN CONTRACT.
- THE CONTRACTOR WILL BE REQUIRED TO PROVIDE A MINIMUM ADVANCE NOTICE OF FORTY-EIGHT (48) HOURS TO EACH OF THE FOLLOWING UTILITIES PRIOR TO THE BEGINNING OF CONSTRUCTION AND REQUEST THAT ANY EXISTING LINES BE FLAGGED:

SOUTHWESTERN BELL TELEPHONE CO.
154 N. BROADWAY
WICHITA, KANSAS 67202
GREG SHARP
316-268-2245

KANSAS GAS & ELECTRIC CO.
1900 EAST CENTRAL
WICHITA, KANSAS 67214
RUSS CHITWOOD
316-261-6285
(ELECTRIC)

KANSAS GAS & ELECTRIC CO.
1021 EAST 26TH STREET NORTH
WICHITA, KANSAS 67219
JAMES SHIMP
316-832-3122
(GAS)

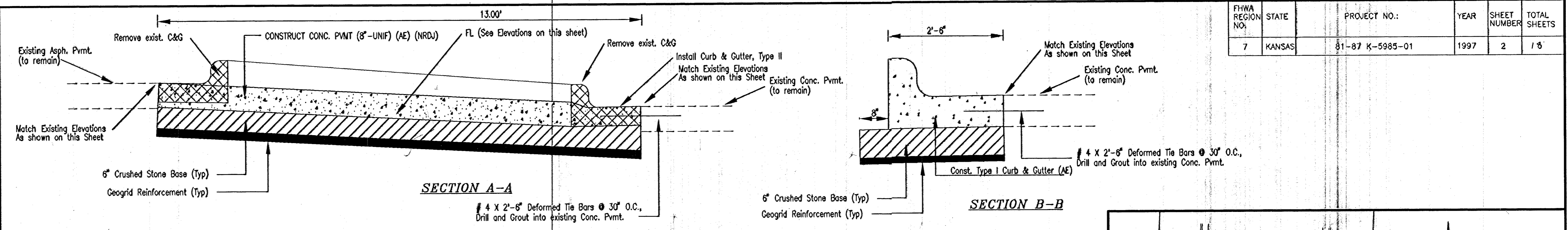
WICHITA WATER DEPARTMENT
8TH FLOOR - CITY HALL
455 N. MAIN STREET
WICHITA, KANSAS 67202
CHUCK STEVEN
316-268-4555

WICHITA SEWER MAINTENANCE DIVISION
WATER & WATER POLLUTION CONTROL DEPT.
8TH FLOOR-CITY HALL
455 N. MAIN STREET
WICHITA, KANSAS 67202
SUSAN TURNER
316-268-4210

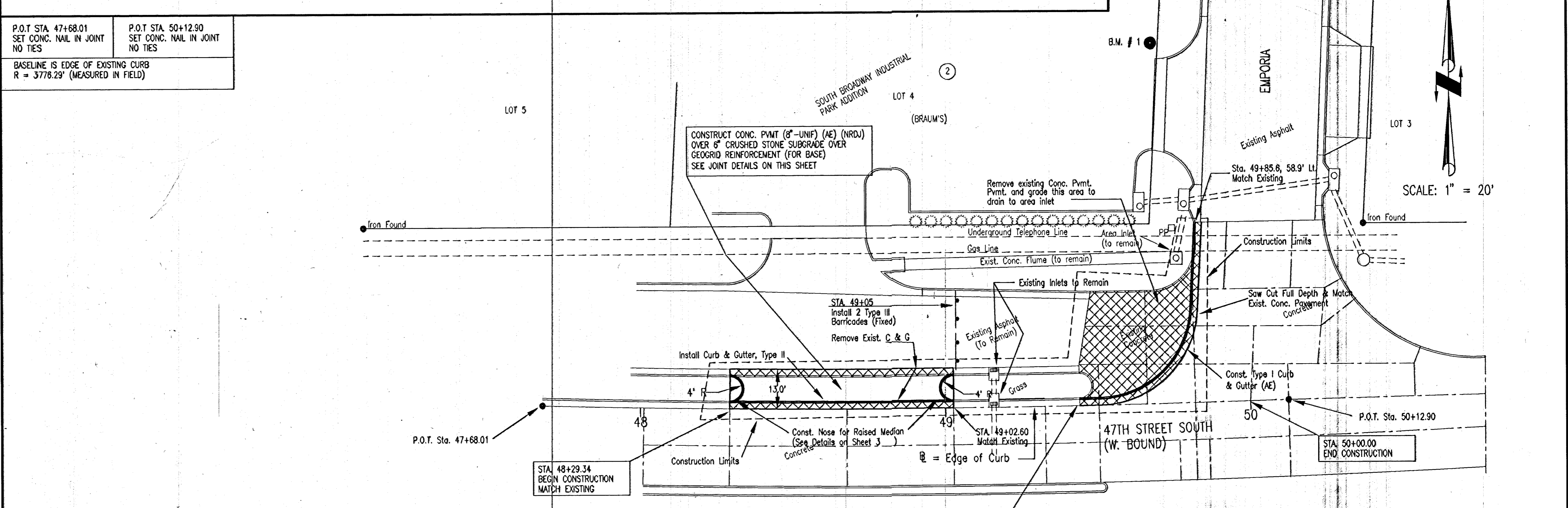
KANSAS ONE-CALL
1-800-344-7233
DIG SAFE
687-2470

PEOPLES NATURAL GAS
3845 WEST HARRY
WICHITA, KANSAS 67213
JERRY WATKINS
316-942-7600

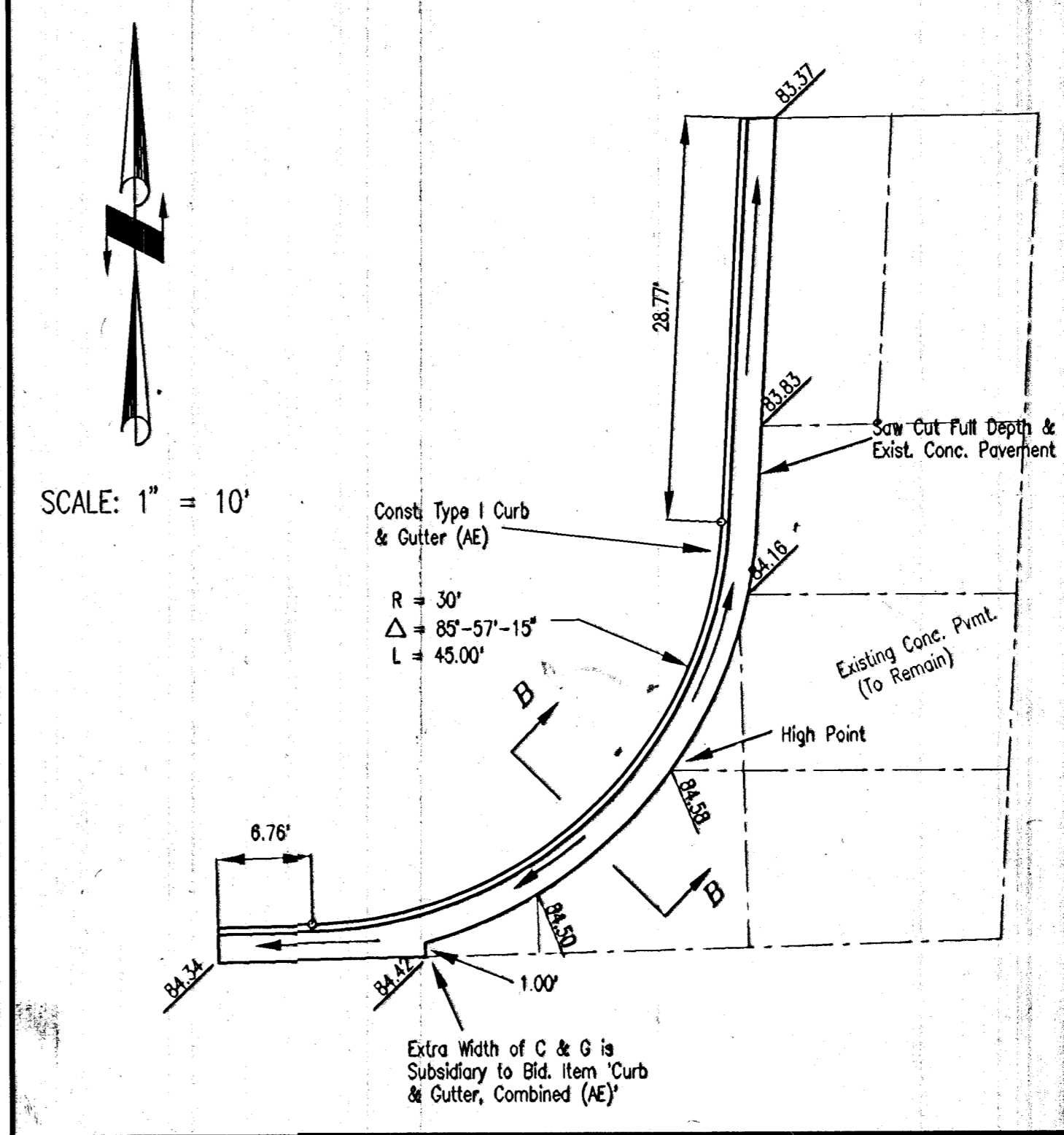
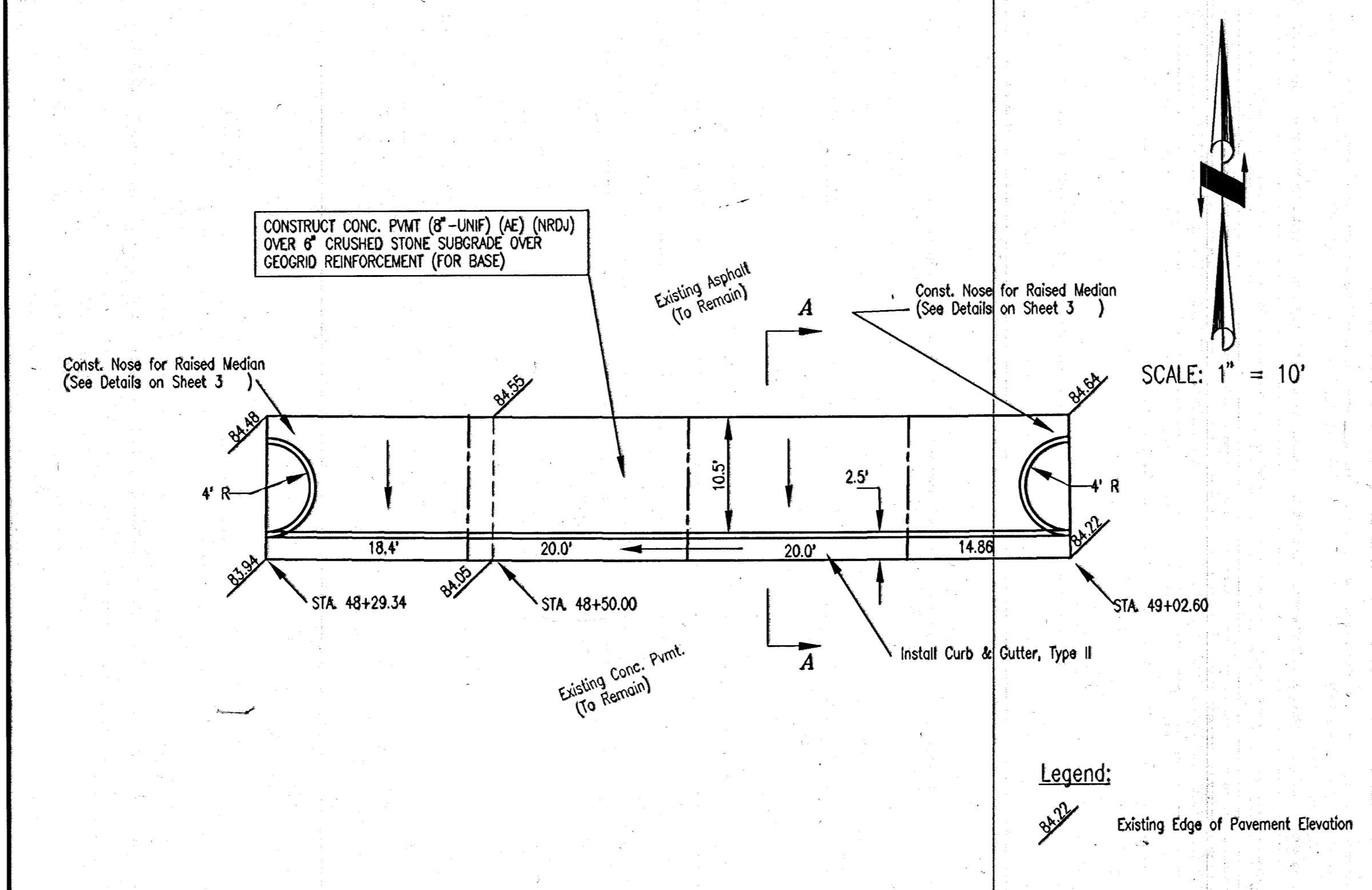
- IN ACCORDANCE WITH OVERHEAD POWER LINE PREVENTION ACT, THE CONTRACTOR SHALL NOTIFY K&E TO ARRANGE FOR APPROPRIATE SAFETY PRECAUTIONS BEFORE WORKING WITHIN 10 FEET OF AN OVERHEAD HIGH VOLTAGE LINE.
- ALL TREES, HEDGE ROWS, SHELTER BELTS, AND WOODY SHRUBS NOT SHOWN TO BE REMOVED AND LOCATED BETWEEN THE CONSTRUCTION LIMITS AND THE RIGHT-OF-WAY LINE OR EASEMENT LINE SHALL BE SPARED UNLESS DIRECTED BY THE ENGINEER TO BE REMOVED. ALL TREES WITHIN THE APPROPRIATE CLEAR ZONE SHALL BE REMOVED.
- ALL DISTURBED LAWNS SHALL BE SODDED WITH GYMOND BERMUDA TURF SOD.



P.O.T. STA. 47+68.01 SET CONC. NAIL IN JOINT NO TIES	P.O.T. STA. 50+12.90 SET CONC. NAIL IN JOINT NO TIES
BASELINE IS EDGE OF EXISTING CURB R = 3778.29' (MEASURED IN FIELD)	



BENCH MARK # 1: CHISELED SQUARE ON TOP OF CONCRETE BASE OF LIGHT POLE ON THE NORTH SIDE OF ENTRANCE TO BRAUM'S FROM EMPORIA STREET. ELEV. = 85.57 (CITY OF WICHITA DATUM) CITY OF WICHITA DATUM = NGVD - 1187.40



- NOTES:**
- INSTALL # 4 X 2'-6\"/>
 - MATCH CONCRETE JOINTS OF NEW CURB & GUTTER WITH EXISTING PAVEMENT WHERE POSSIBLE.

PLAN SHEET AND GENERAL NOTES

SCALE:	APPROVED:	DRAWN BY:
DATE:		CHECKED:
PROJECT NO. 472-76-245-82558-000-000-001 (City of Wichita)		SHEET NO.:

MUNICIPAL ENGINEERS
 264-LAURA, SUITE 201
 WICHITA, KANSAS 67211
 316-262-3842