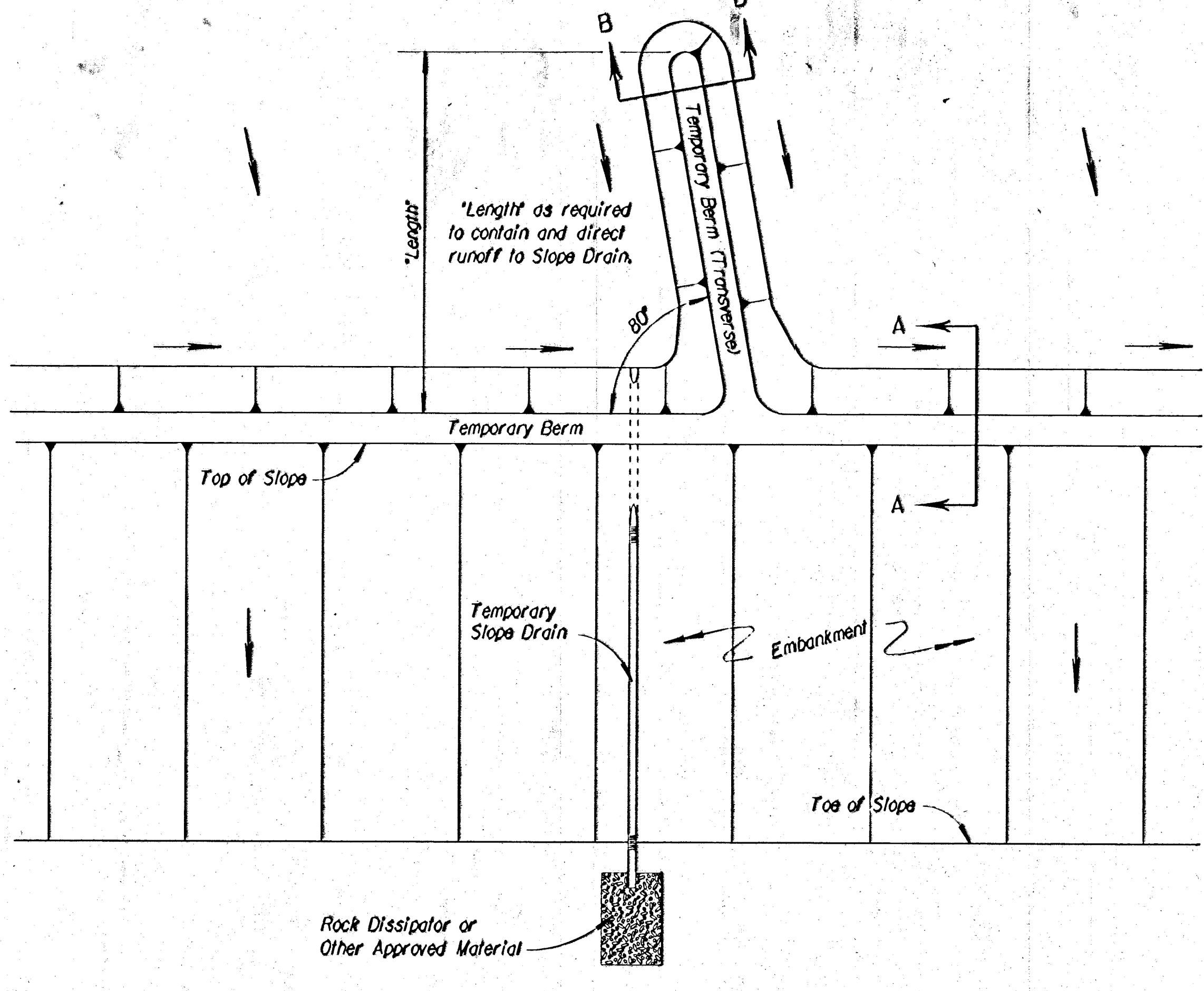
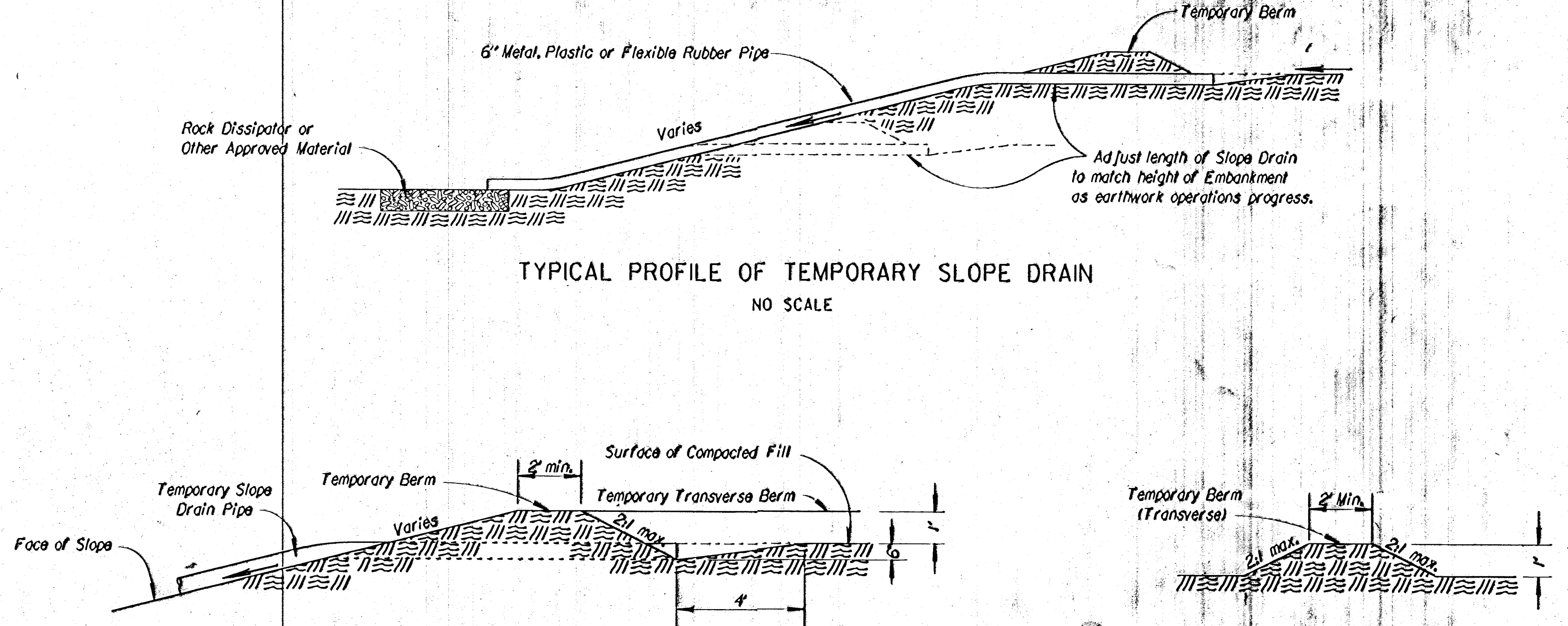


F.H.A. REGION NO.	STATE	PROJECT NO.	YEAR	SHEET NO.	TOTAL SHEETS
7	KANSAS	81-87-K-5985-01	1997	13	18

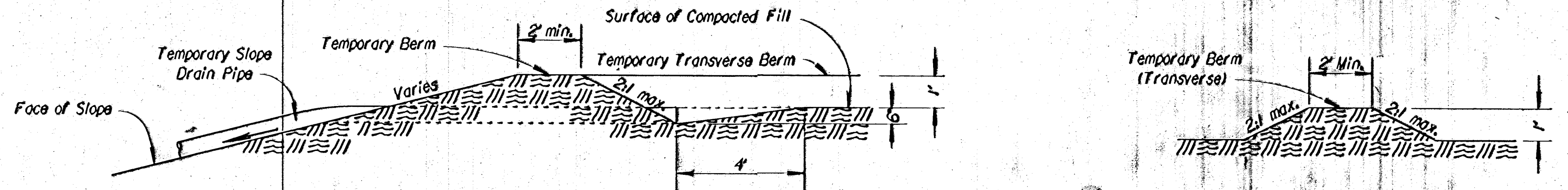
- NOTES:
- 1) Temporary Slope Drain and Temporary Berm may be used on either project forestopes or project back slopes.
 - 2) Discharge of Slope Drains shall be into stabilized ditch or area, or into Sediment Basin.
 - 3) Pipe shall be secured in place as approved by Engineer.



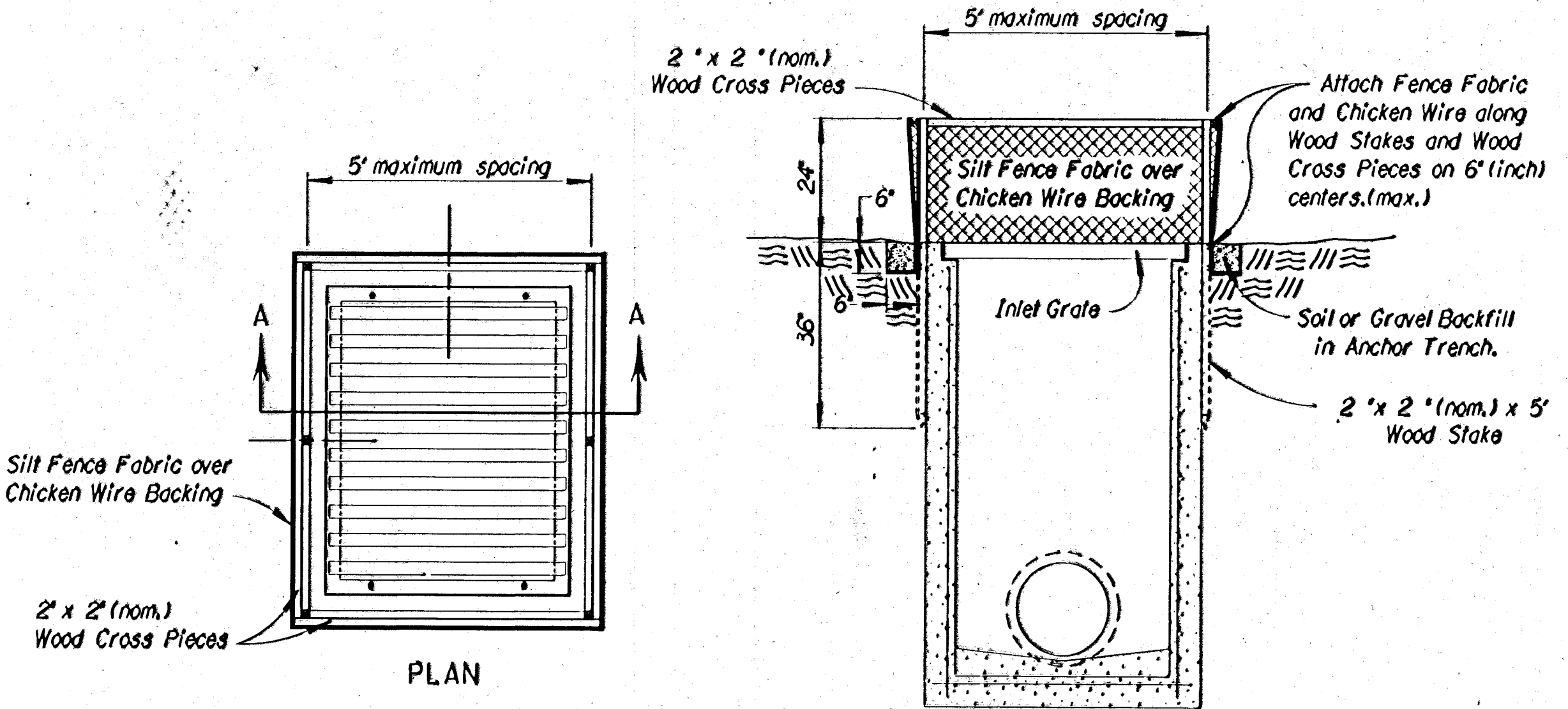
TYPICAL PLAN VIEW OF TEMPORARY BERM AND TEMPORARY SLOPE DRAIN
NO SCALE



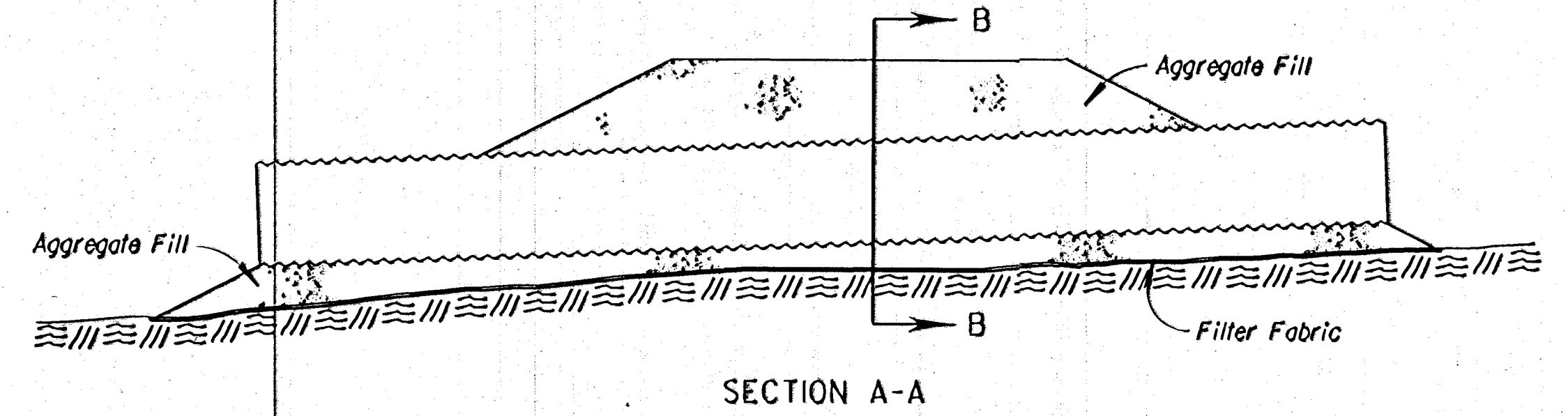
TYPICAL PROFILE OF TEMPORARY SLOPE DRAIN
NO SCALE



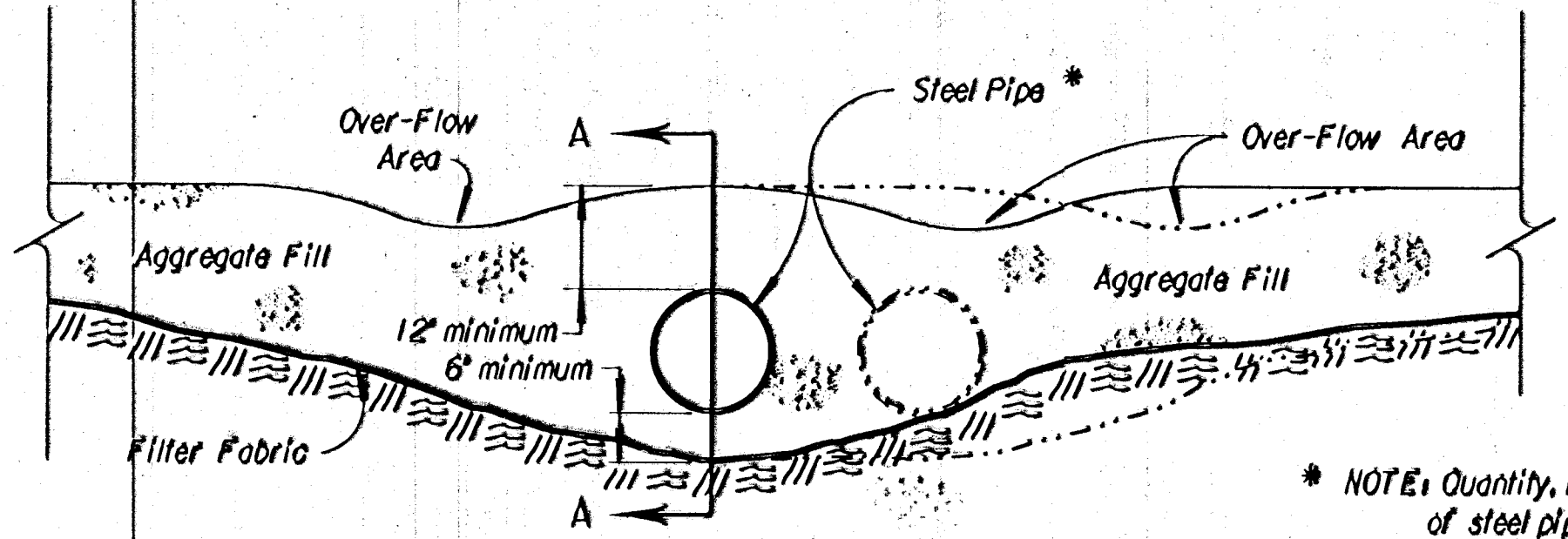
TYPICAL PROFILE OF TEMPORARY BERM
NO SCALE



TEMPORARY MEDIAN INLET SEDIMENT BARRIER
NO SCALE



SECTION A-A



SECTION B-B

TEMPORARY STREAM CROSSING
NO SCALE

* NOTE: Quantity, length and diameter of steel pipe to be determined by design flow calculations.

NO.	DATE	REVISIONS	BY	APP'D

KANSAS DEPARTMENT OF TRANSPORTATION
TEMPORARY PROJECT WATER POLLUTION CONTROL
 TEMPORARY SLOPE DRAIN, STREAM CROSSING, MEDIAN INLET SEDIMENT BARRIER
 STD. NO. LA852C

DESIGNED BY	CHK'D BY	APP'D BY	DESIGNED BY	CHK'D BY	APP'D BY

ross /usr5/ross/refstds/10852c.dgn 5-SEP-1995 10:32 View PLOT 1