

③ Dimensions and slopes shall apply except where special shaping has been shown on plan.

**GENERAL NOTES**

ROCK BASE IS TO BE COMPACTED AND SMOOTHED WITH A STEEL FACED ROLLER PRIOR TO PLACEMENT OF ASPHALT. TACK COAT WILL NOT BE APPLIED TO ROCK BASE.

A TACK COAT OF EMULSIFIED ASPHALT (SC-1H OR CSS-1H) SHALL BE APPLIED AT AN APPROXIMATE RATE OF 0.03 GALLONS PER SQUARE YARD BETWEEN EACH LIFT OF ASPHALT MATERIAL.

BITUMINOUS BASE AND ASPHALTIC CONCRETE WEARING SURFACE SHALL BE PLACED WITH A LAYDOWN MACHINE HAVING AUTOMATIC CONTROLS FOR LINE AND GRADE.

CONSTRUCTION JOINTS IN EACH LIFT SHALL BE STAGGERED A MINIMUM DISTANCE OF ONE (1) FOOT FROM JOINTS IN PRECEDING LIFTS AND PLACED SO THAT A JOINT WILL BE CONSTRUCTED ON THE CENTERLINE OF THE TOP LIFT.

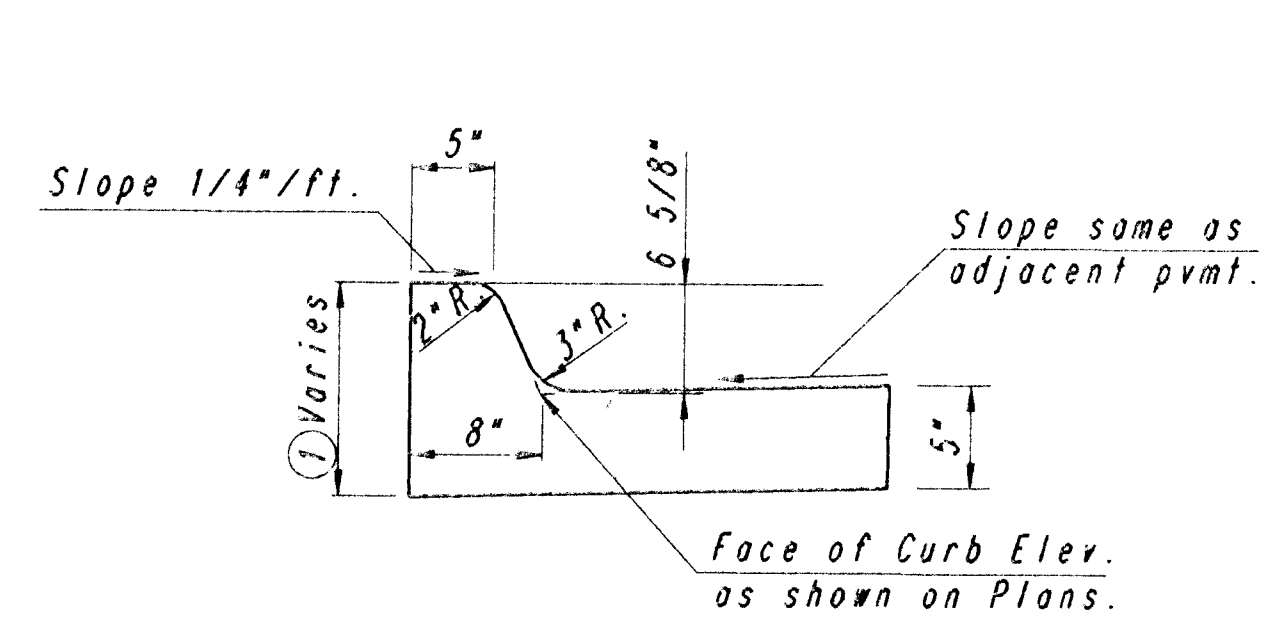
FABRIC BASE REINFORCEMENT SHALL BE BX1100 BY TENSAR CORP. OR LBO201 BY TENAX CORPATION OR APPROVED EQUAL. FABRIC REINFORCEMENT SHALL BE INSTALLED IN ACCORDANCE WITH MANUFACTURES RECOMMENDATIONS.

**CRUSHED ROCK GRADATION REQUIREMENTS**  
PER CENT OF AGGREGATE RETAINED

2-1/2"	0
3/4"	20-60
#4	50-80
#40	80-94
#200	90-98

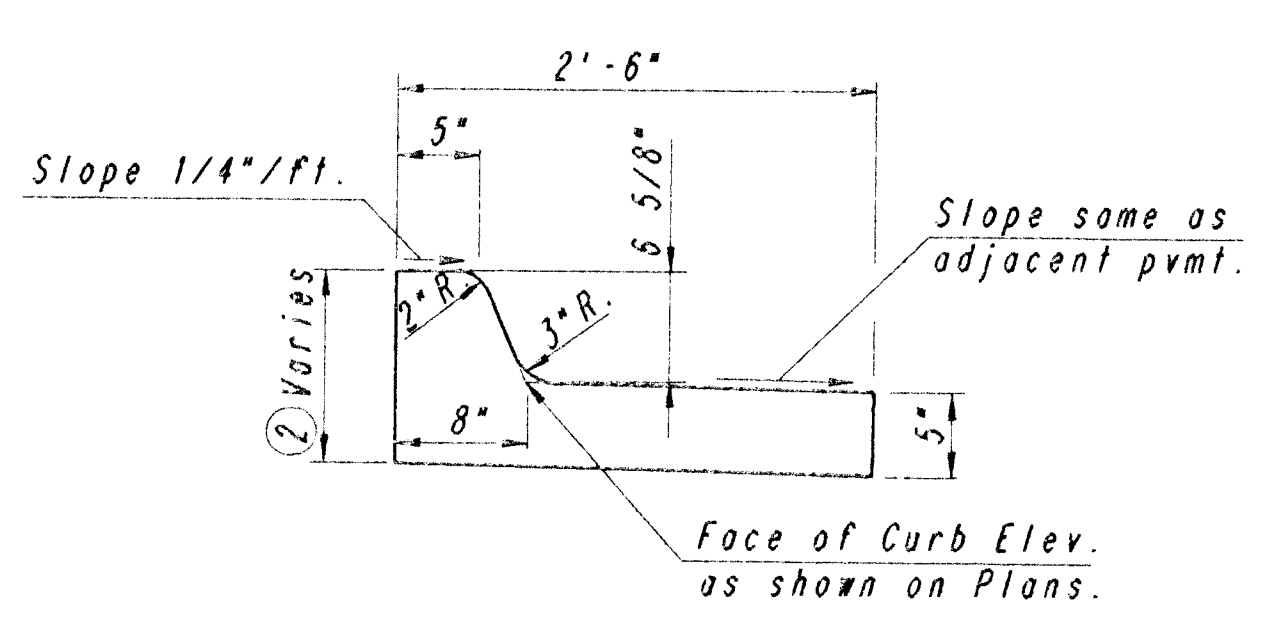
ROCK QUANTITY SHALL CONFORM TO THE REQUIREMENTS SPECIFIED BY THE KDOT 1990 EDITION STANDARD SPECIFICATION SUBSECTION 1102 FOR DURIBILITY CLASS I.

FOUNDATION TREATMENT. SUBSURFACE SOILS CONTAINING CONCRETE RUBBLE, WOOD RUBBLE & VARIOUS OTHER FORMS OF FOREIGN SUBSTANCES. THE CONTRACTOR SHALL UNDERCUT 24" IN CUT SECTIONS & RECONSTRUCT THE PAVEMENT FOUNDATION USING APPROVED CONTRACTOR FURNISHED BORROW. A MINIMUM 24" FOUNDATION (COMPACTED FILL - 90% STD. DENSITY) SHALL BE CONSTRUCTED IN FILL SECTIONS. IF THE EXTENT OF FOUNDATION WORK IS DETERMINED IN THE FIELD TO BE LESS THAN THE QUANTITY OF CONTRACTOR FURNISHED BORROW BID, THE QUANTITY SHALL BE UNDERRUN.



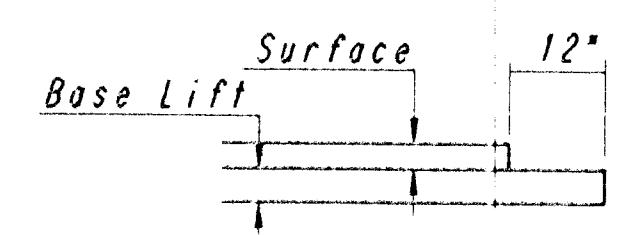
**DETAIL B**  
**COMBINED CURB & GUTTER**  
(LOW SIDE)

① 12" for pavement slope of 3/8"/ft.  
See Sh. No. for detail when adjacent to concrete sidewalk.  
See Sh. No. for detail when adjacent to concrete sidewalk.



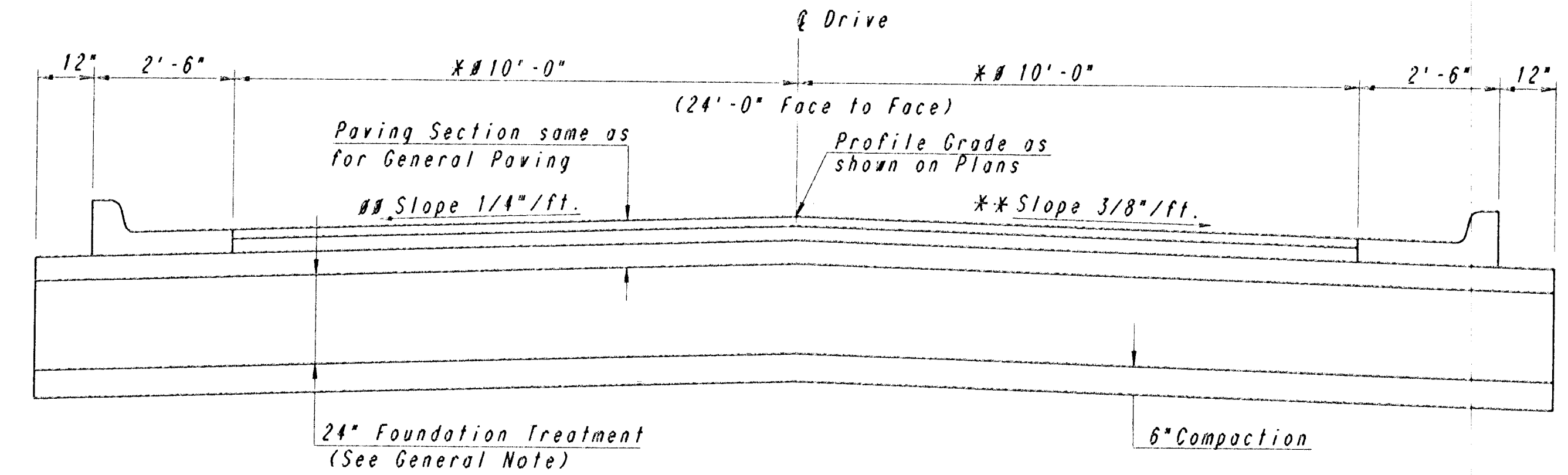
**COMBINED CURB & GUTTER**  
(HIGH SIDE)

② 11 3/8" for pavement slope of 3/8"/ft.  
See Sh. No. for detail when adjacent to concrete sidewalk.  
See Sh. No. for detail when adjacent to concrete sidewalk.



**TRANSVERSE CONSTRUCTION JOINT**

TRANSVERSE CONSTRUCTION JOINTS SHALL BE CONSTRUCTED IN FLEXIBLE BASE PAVEMENTS AT LOCATIONS WHERE PAVEMENT JOINS EXISTING FLEXIBLE BASE PAVEMENT AS SHOWN BY THE DETAIL. ALL COSTS ASSOCIATED WITH THE CONSTRUCTION OF THE TRANSVERSE JOINT SHALL BE INCLUDED IN THE BID PRICE FOR SQUARE YARDS 5" ASPHALTIC CONCRETE PAVEMENT (3" BITUMINOUS BASE).



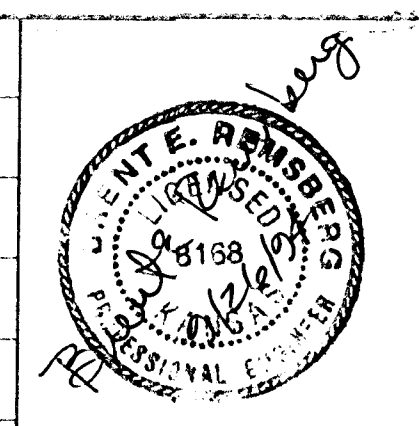
**TYPICAL SECTION DRIVE**  
STA. 45+26 TO STA. 49+54

\* Width left narrows Sta. 45+26 to Sta. 45+62.69 (See Grading Plan)  
# Width left & right varies Sta. 48+50 to Sta. 49+54  
\*\* Slope 1/4"/ft. Sta. 46+00 to Sta. 48+50, otherwise varies (See Grading Plan)  
Transition from reverse crown to normal crown Sta. 45+25 to Sta. 46+00  
## Slope 3/8"/ft. Sta. 46+25 to Sta. 48+50, otherwise varies (See Grading Plan)

PLAN	SURVEYED	BY	DATE
	PLOTTED		
	NOTED		
	ALIGNED		
	CHECKED		
	BY		

DRAWING NAME: 36-92005 I.C. Typ Sect  
LOCATION: 04 4757  
ROTATION: 0  
DATE LAST WORKED ON: SEPT. 27, 1984  
BRENT REMBERG

REV.	DATE	DESCRIPTION



HELLMUTH, OBATA & KASSEBAUM, INC.  
DALLAS, TEXAS  
PROFESSIONAL ENGINEERING  
CONSULTANTS, P.A.  
WICHITA, KANSAS  
BRAD J. GOLDBERG  
DALLAS, TEXAS

**MID-AMERICA  
ALL-INDIAN CENTER  
SITE IMPROVEMENTS  
CITY OF WICHITA, KANSAS**

**PAVING DETAILS**

PROJECT NO.	ISSUE DATE	SCALE	SHEET
		NO SCALE	P6