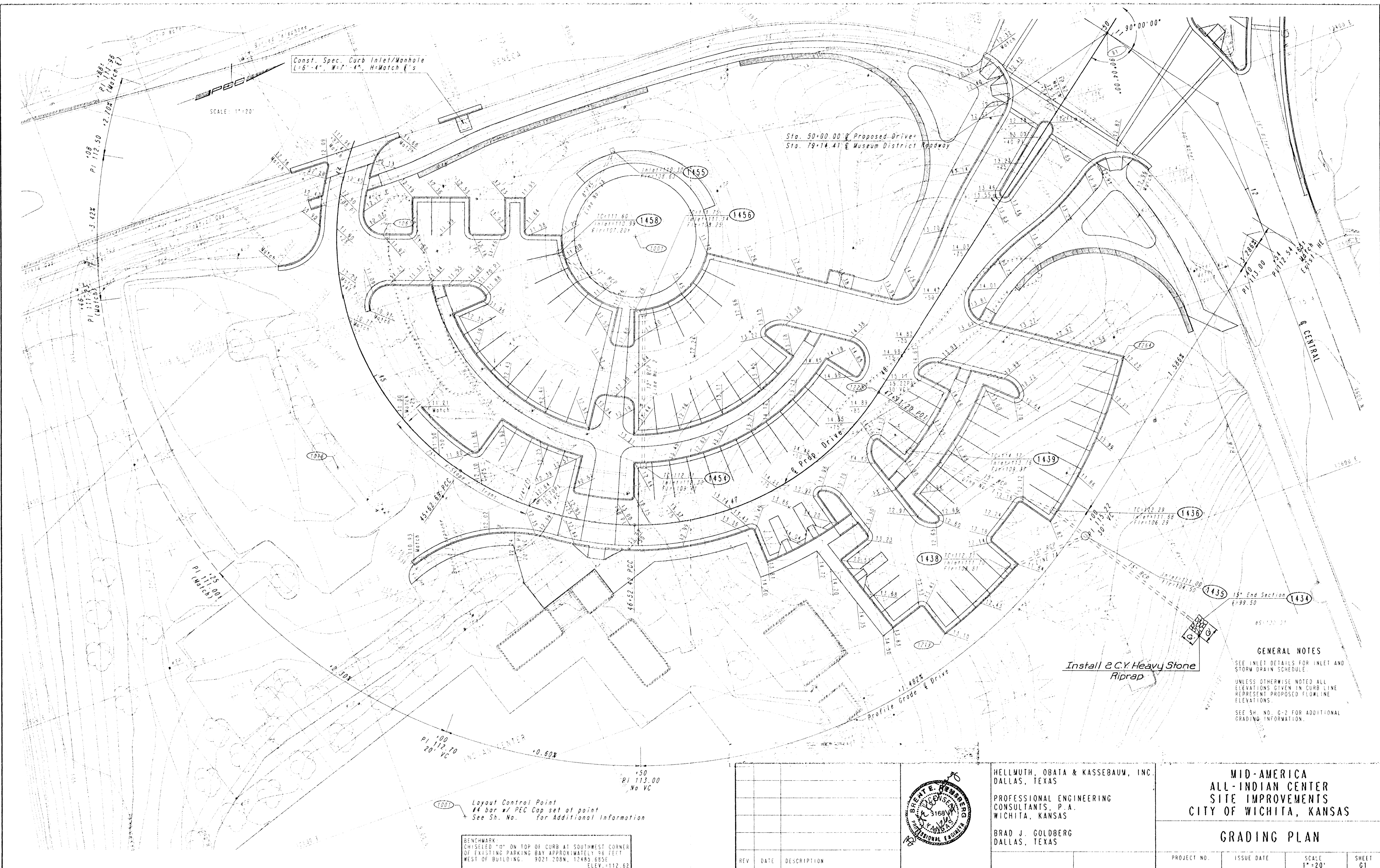


| | |
|-----------|-------------------|
| PLAN | DATE |
| SURVEYED | BY |
| NOTE BOOK | PLOTTED |
| NO. | ALIGNMENT CHECKED |
| | BT OF WAY CHECKED |
| | BT |

DRAWING NAME: 36-92005 IC GRADING
 LOCATION: 04 4744, 746 AND 747
 CENTER COORDINATES
 DATE LAST WORKED ON: SEPT. 22, 1994
 BRENT REMBERG



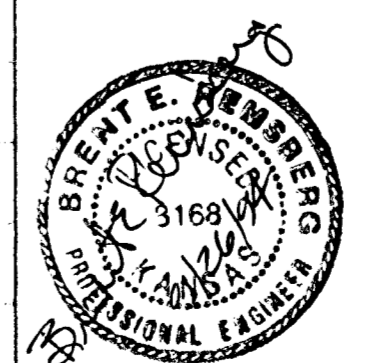
1000 Layout Control Point
 #4 bar #1 PEC Cap set at point
 See Sh. No. for Additional Information

BENCHMARK
 CHISELED "0" ON TOP OF CURB AT SOUTHWEST CORNER
 OF EXISTING PARKING BAY APPROXIMATELY 96 FEET
 WEST OF BUILDING. 9021 208N, 12485 885E
 ELEV. = 112.62

Install & C.Y. Heavy Stone
 Riprap

GENERAL NOTES
 SEE INLET DETAILS FOR INLET AND
 STORM DRAIN SCHEDULE
 UNLESS OTHERWISE NOTED ALL
 ELEVATIONS GIVEN IN CURB LINE
 REPRESENT PROPOSED FLOWLINE
 ELEVATIONS.
 SEE SH. NO. 0-2 FOR ADDITIONAL
 GRADING INFORMATION.

| REV | DATE | DESCRIPTION |
|-----|------|-------------|
| | | |
| | | |
| | | |



HELLMUTH, OBATA & KASSEBAUM, INC.
 DALLAS, TEXAS
 PROFESSIONAL ENGINEERING
 CONSULTANTS, P.A.
 WICHITA, KANSAS
 BRAD J. GOLDBERG
 DALLAS, TEXAS

MID-AMERICA
 ALL-INDIAN CENTER
 SITE IMPROVEMENTS
 CITY OF WICHITA, KANSAS

GRADING PLAN

| | | | |
|-------------|------------|--------|-------|
| PROJECT NO. | ISSUE DATE | SCALE | SHEET |
| | | 1"=20' | 61 |