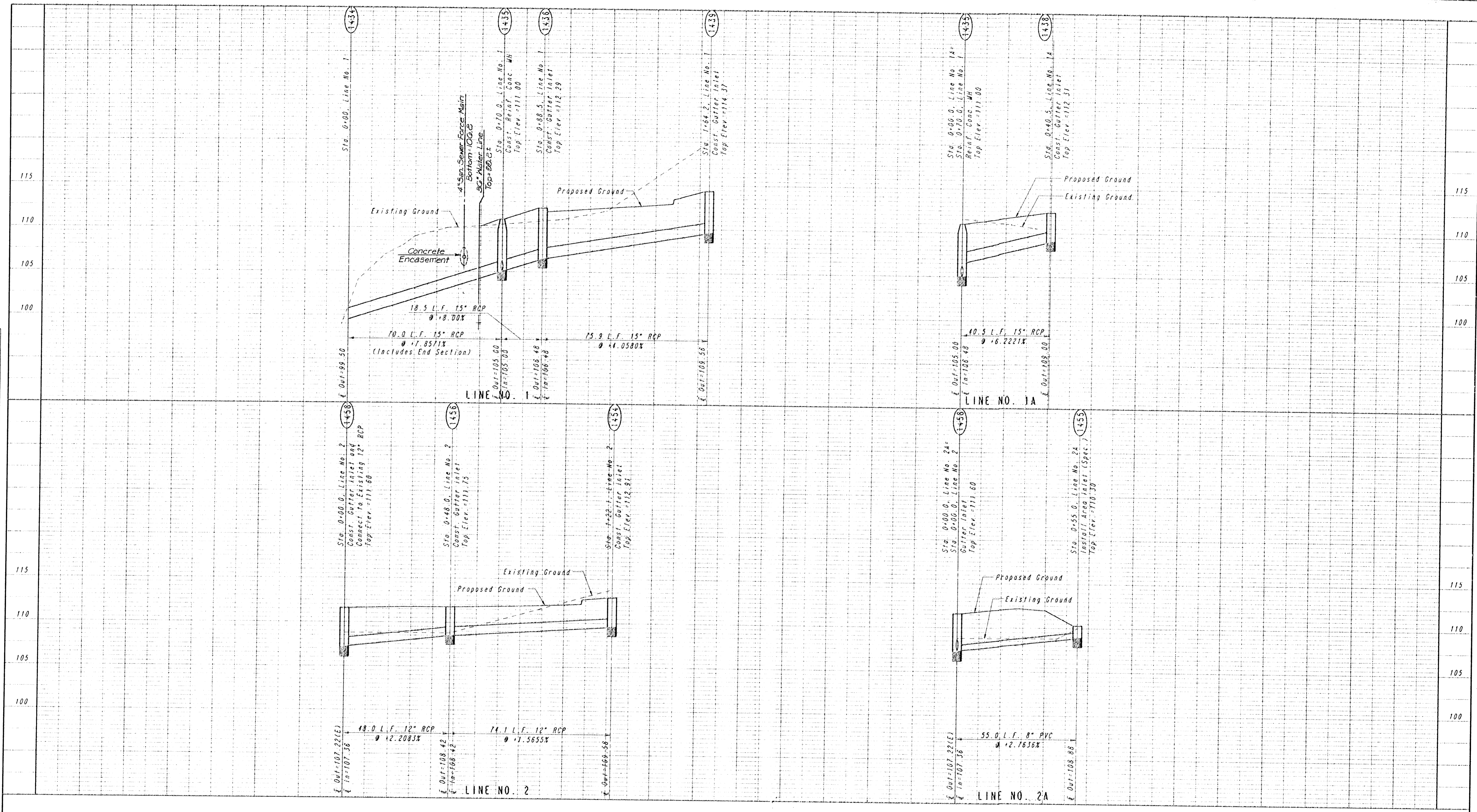
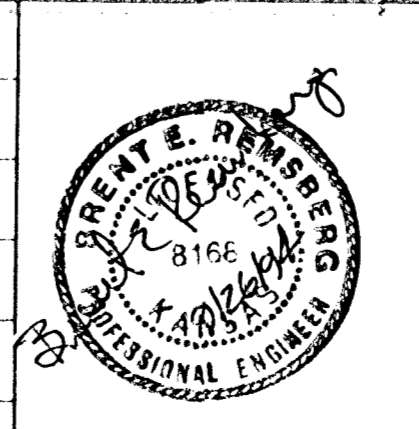


DRAWING NAME: 36-92005 IC SWS PROFILE  
 LOCATION: 04 #782  
 REVIEWER COORDINATES:  
 DATE LAST WORKED ON: SEPT. 22, 1994  
 BRENT REMBERG

PLAN	SURVEYED	BY	DATE
NOTE BOOK PLOTTED	NO.	ALIGNMENT CHECKED	
		BT OF WAY CHECKED	



REV.	DATE	DESCRIPTION



HELLMUTH, OBATA & KASSEBAUM, INC.  
 DALLAS, TEXAS  
 PROFESSIONAL ENGINEERING  
 CONSULTANTS, P.A.  
 WICHITA, KANSAS  
 BRAD J. GOLDBERG  
 DALLAS, TEXAS

MID-AMERICA  
 ALL-INDIAN CENTER  
 SITE IMPROVEMENTS  
 CITY OF WICHITA, KANSAS

**STORM WATER SEWER PROFILES**

PROJECT NO.	ISSUE DATE	SCALE NO SCALE	SHEET 01
-------------	------------	-------------------	-------------