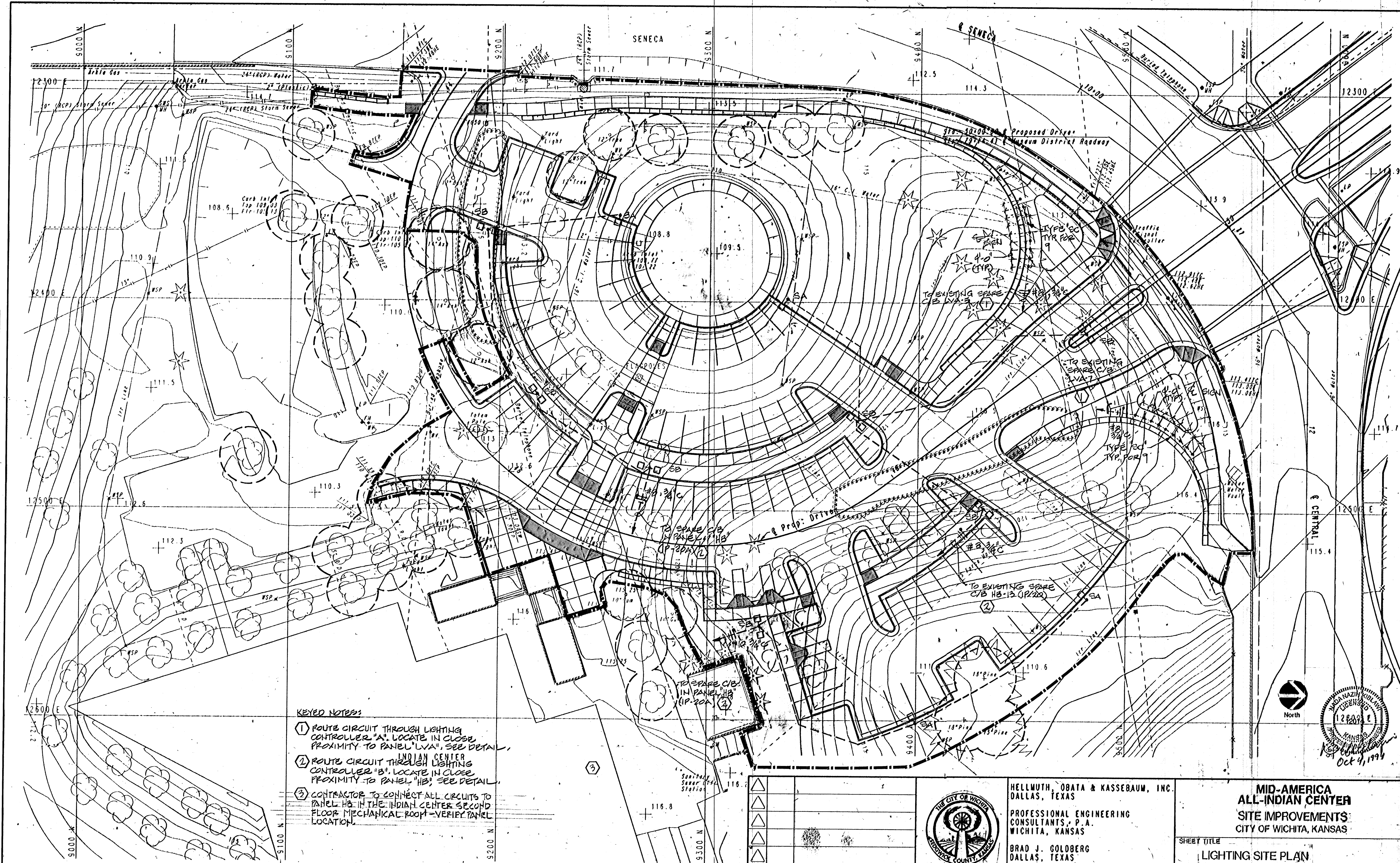


|           |                    |    |      |
|-----------|--------------------|----|------|
| PLAN      | SURVEYED           | BY | DATE |
| NOTE BOOK | PLOTTED            |    |      |
| NO.       | ALIGNMENT CHECKED  |    |      |
|           | RT. OF WAY CHECKED |    |      |

DRAWING NAME: 36-92005 IND CTR PLAN 1  
 LOCATION: 04 4575, 576, 620  
 CENTER COORDINATES:  
 DATUM: NAD 83  
 DATE LAST WORKED ON:  
 RON PLETCHER



- KEYED NOTES:**
- ① ROUTE CIRCUIT THROUGH LIGHTING CONTROLLER "A". LOCATE IN CLOSE PROXIMITY TO PANEL "LVA"; SEE DETAIL.
  - ② ROUTE CIRCUIT THROUGH LIGHTING CONTROLLER "B". LOCATE IN CLOSE PROXIMITY TO PANEL "HB"; SEE DETAIL.
  - ③ CONTRACTOR TO CONNECT ALL CIRCUITS TO PANEL HB IN THE INDIAN CENTER SECOND FLOOR MECHANICAL ROOM - VERIFY PANEL LOCATION.

| REV. | DATE | DESCRIPTION |
|------|------|-------------|
|      |      |             |
|      |      |             |
|      |      |             |
|      |      |             |



HELLMUTH, OBATA & KASSEBAUM, INC.  
 DALLAS, TEXAS  
 PROFESSIONAL ENGINEERING  
 CONSULTANTS, P. A.  
 WICHITA, KANSAS  
 BRAD J. GOLDBERG  
 DALLAS, TEXAS

**MID-AMERICA  
 ALL-INDIAN CENTER  
 SITE IMPROVEMENTS  
 CITY OF WICHITA, KANSAS**

|             |             |                    |       |
|-------------|-------------|--------------------|-------|
| SHEET TITLE |             | LIGHTING SITE PLAN |       |
| PROJECT NO. | ISSUE DATE. | SCALE.             | SHEET |
| 92-036-122  |             | 1" = 20'           | U-5   |

