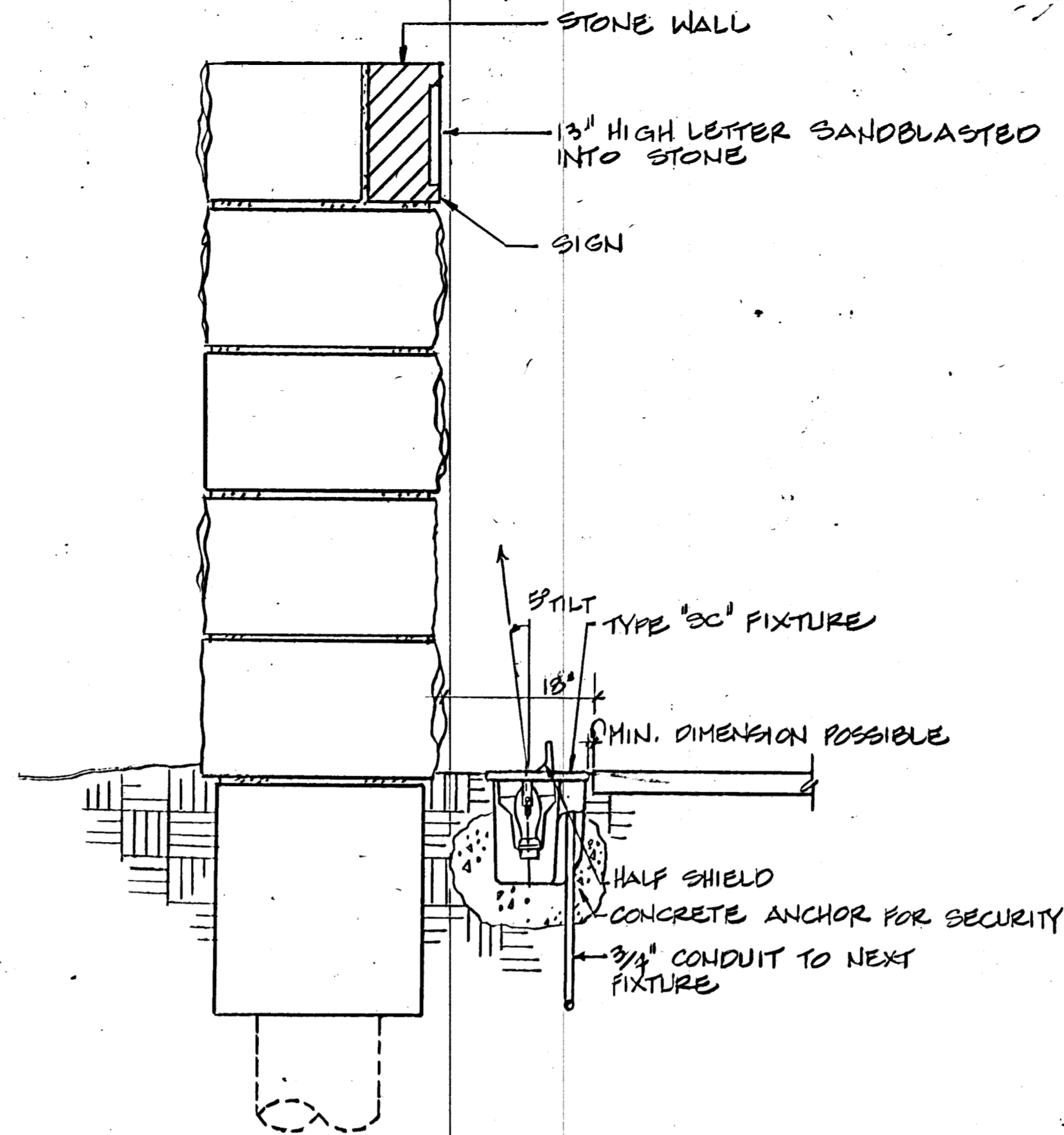
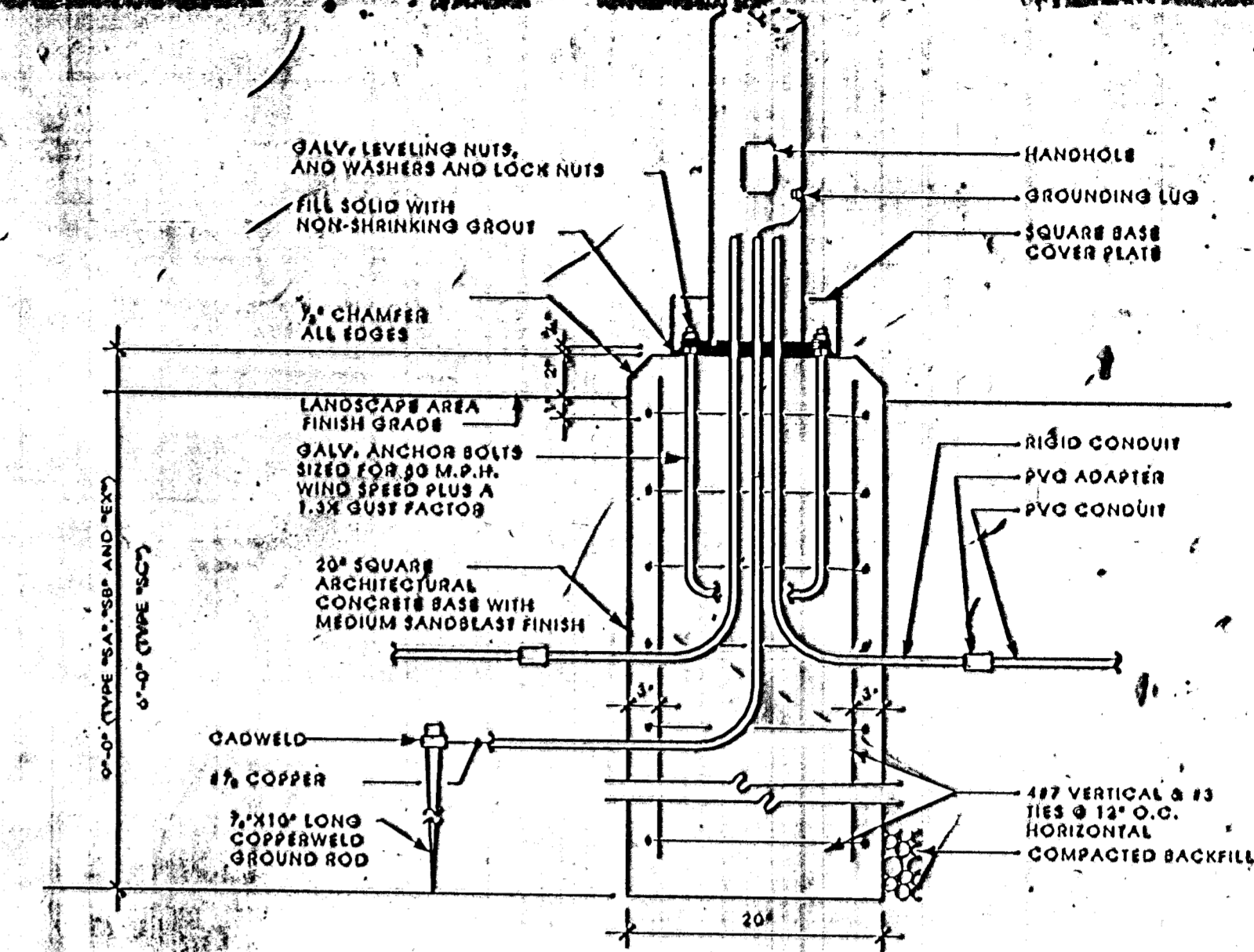


NOTES:  
 1. LIGHTING CONTROLLER TO BE ACCO #G415 PHOTOCELL ON/PHOTOCELL OFF CONTROL. (OR APPROVED EQUAL)

C CONTROLLER "A" AND "B" SCHEMATIC DIAGRAM  
 NO SCALE



B TYPE "SC" FIXTURE DETAIL  
 SCALE 3/4"=1'-0"

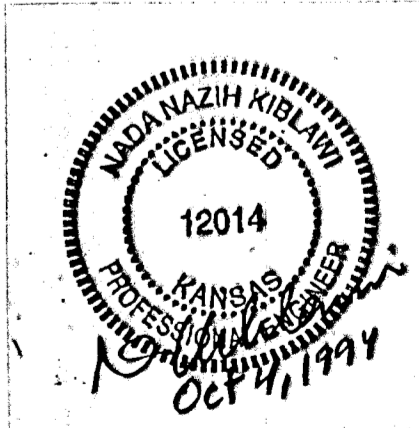


A LIGHT BASE DETAIL - LANDSCAPE PLACEMENT  
 NO SCALE

LEGEND

- ○ EXTERIOR LIGHT FIXTURE, POLE MTD. SINGLE HEAD.
- ○ EXTERIOR LIGHT FIXTURE, POLE MTD. DUAL HEAD.
- IN GROUND LIGHT FIXTURE
- CONDUIT CONCEALED UNDERGROUND
- |||| HOME RUN CONDUIT, LONG STROKES INDICATE PHASE WIRE; SHORT STROKES INDICATE NEUTRAL; LONG STROKE W/ DOT INDICATES GROUND.

LIGHTING FIXTURE SCHEDULE							
TYPE	MANUFACTURER CATALOG NUMBER	LUMINAIRE DESCRIPTION	LAMP CODE	QTY	WATTS/UNIT	VOLT	REMARKS
SA	KIM - EKG Series IA - EKG501 - 400 HPS 277-DB-P W/ *PTSS25-62120-DB-P	Pole mounted HID high pressure sodium "Shoe-Box" fixture with one piece extruded aluminum fixture housing and specular Alzak hydroformed reflector; impact resistant clear tempered glass lens and full gasket in door frame. Type III distribution fixture on 25' square steel pole.	LU400	1	465	277	Bronze Finish. *Fixture to match existing fixtures. Provide tapered or straight pole as required - Contractor to verify.
SB	KIM 2B-EKG501 - 400 HPS 277 - DB - P W/ *PTSS25 62120 - DB-P	Same as "SA" except dual fixture heads.	LU400	2	930	277	
SC	KIM CL3/50MH120/NF/F/ HS3/MD- Sandblasted Lens	Ground mounted HID metal half wall wash fixture. Cast aluminum housing; spurt aluminum with Alzak reflector; Flat tempered glass sandblasted lens with gasket. Provide with cast aluminum half shield.	M50/U/MED	1	60	120	Fixture to have flood reflector.



REV.	DATE	DESCRIPTION



HELLMUTH, OBATA & KASSABAUM, INC.  
 DALLAS, TEXAS  
 PROFESSIONAL ENGINEERING  
 CONSULTANTS, PA  
 WICHITA, KANSAS  
 BRAD J. GOLDBERG, ARTIST  
 DALLAS, TEXAS

MID-AMERICA  
 ALL-INDIAN CENTER  
 SITE IMPROVEMENTS  
 CITY OF WICHITA, KANSAS  
 SHEET TITLE:  
 ELECTRICAL DETAILS  
 DRAWN BY:      APPROVED BY:      PROJECT NO.:      ISSUE DATE:      SCALE:      SHEET: U-6