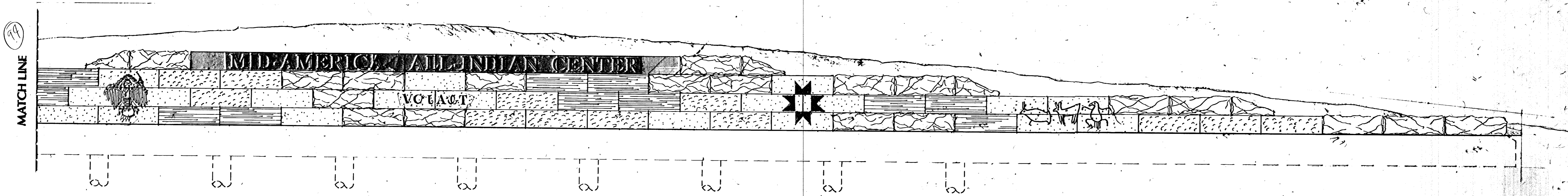
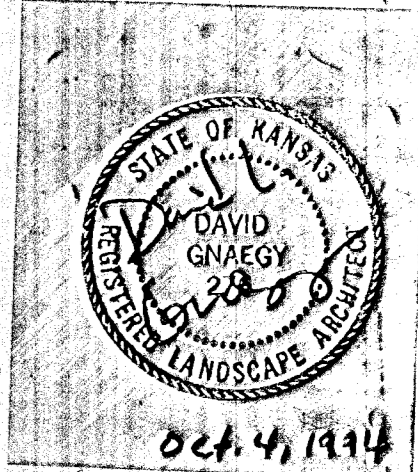


**A** LEFT ENTRY WALL ELEVATION WITH ART IMAGES (N.I.C.)  
1/4" = 1'-0"



**B** RIGHT ENTRY WALL ELEVATION WITH ART IMAGES (N.I.C.)  
1/4" = 1'-0"



REV.	DATE	DESCRIPTION
△		
△		
△		
△		
△		



HELLMUTH, OBATA & KASSABAUM, INC.  
DALLAS, TEXAS  
PROFESSIONAL ENGINEERING  
CONSULTANTS, PA  
WICHITA, KANSAS  
BRAD J. GOLDBERG, ARTIST  
DALLAS, TEXAS  
DRAWN BY: \_\_\_\_\_ APPROVED BY: \_\_\_\_\_

**MID-AMERICA  
ALL-INDIAN CENTER**  
SITE IMPROVEMENTS  
CITY OF WICHITA, KANSAS  
SHEET TITLE: **ART IMAGES**  
PROJECT NO.: 92-038/122 ISSUE DATE: \_\_\_\_\_ SCALE: \_\_\_\_\_ SHEET: W-4