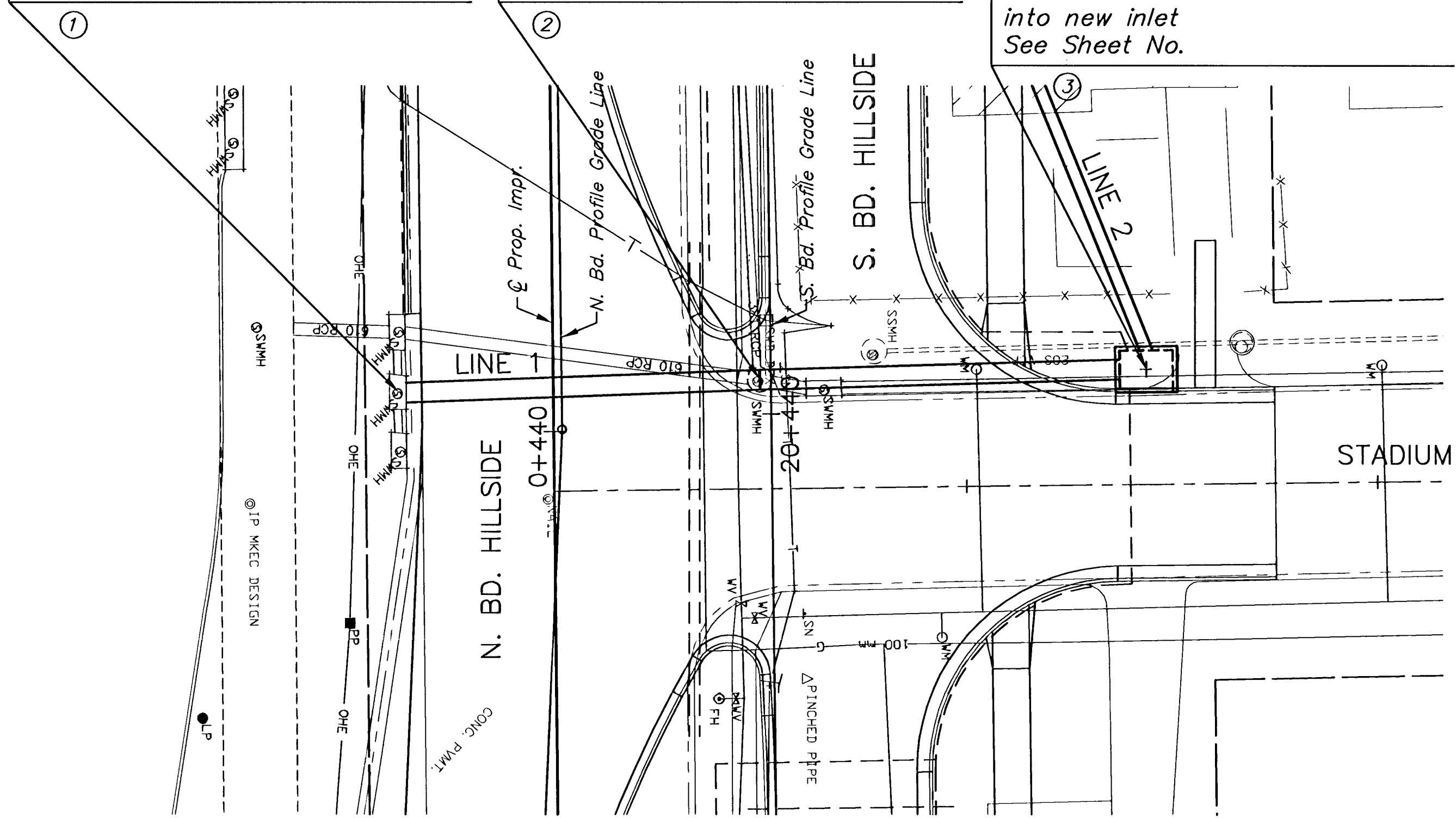


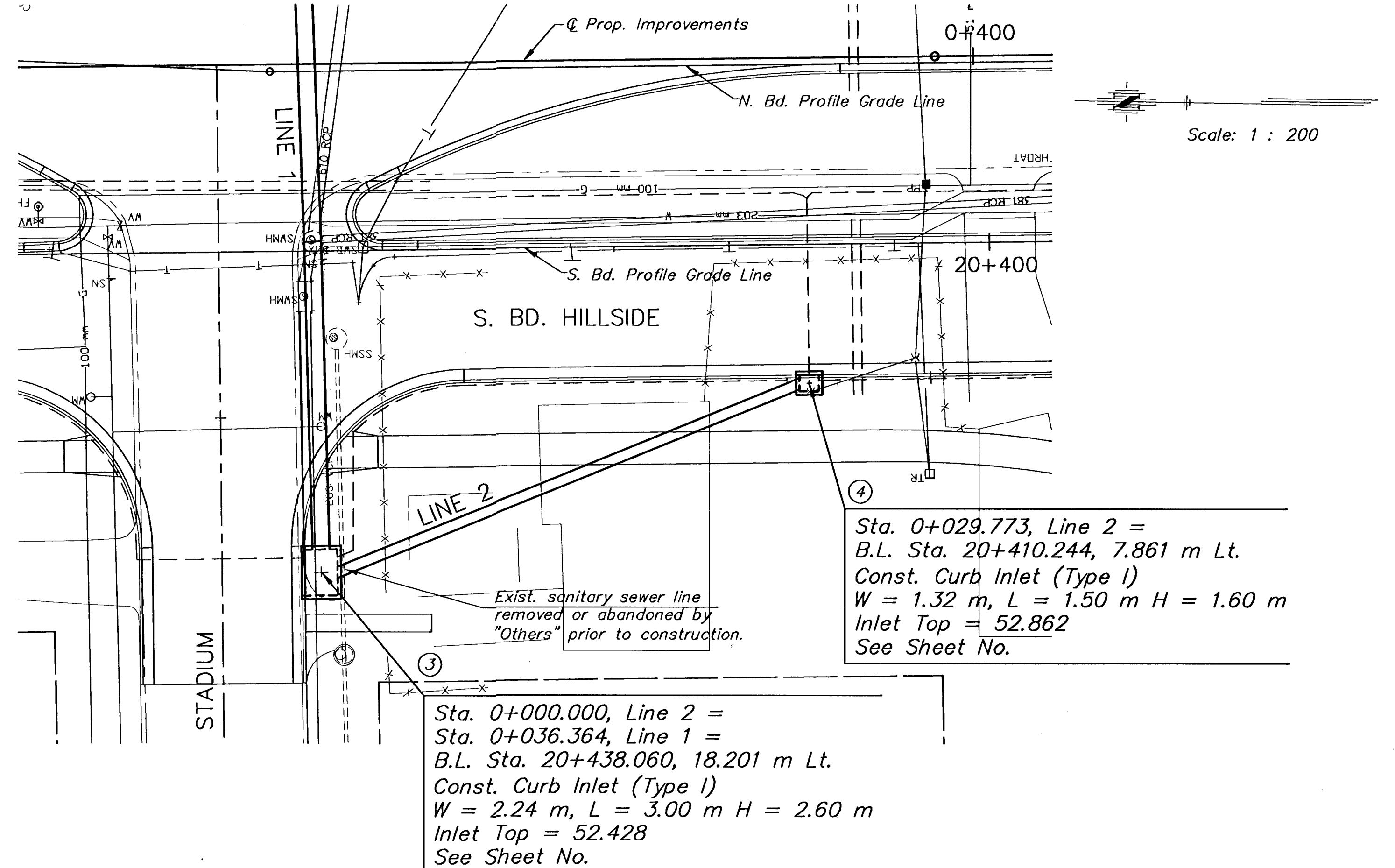
Sta. 0+000.000, Line 1 =
 Q Sta. 0+437.991, 7.540 m Rt.
 Exist. Curb Inlet
 Connect new 0.550 m² RCPHE,
 Storm Sewer into exist. inlet (W)
 See Sheet No.

Sta. 0+017.620, Line 1 =
 Q Sta. 0+437.586, 10.062 m Lt.
 Exist. Storm Sewer Manhole
 Connect new 0.550 m² RCPHE,
 Storm Sewer into exist. manhole
 (Temporary)(Phase I)
 See Sheet No.

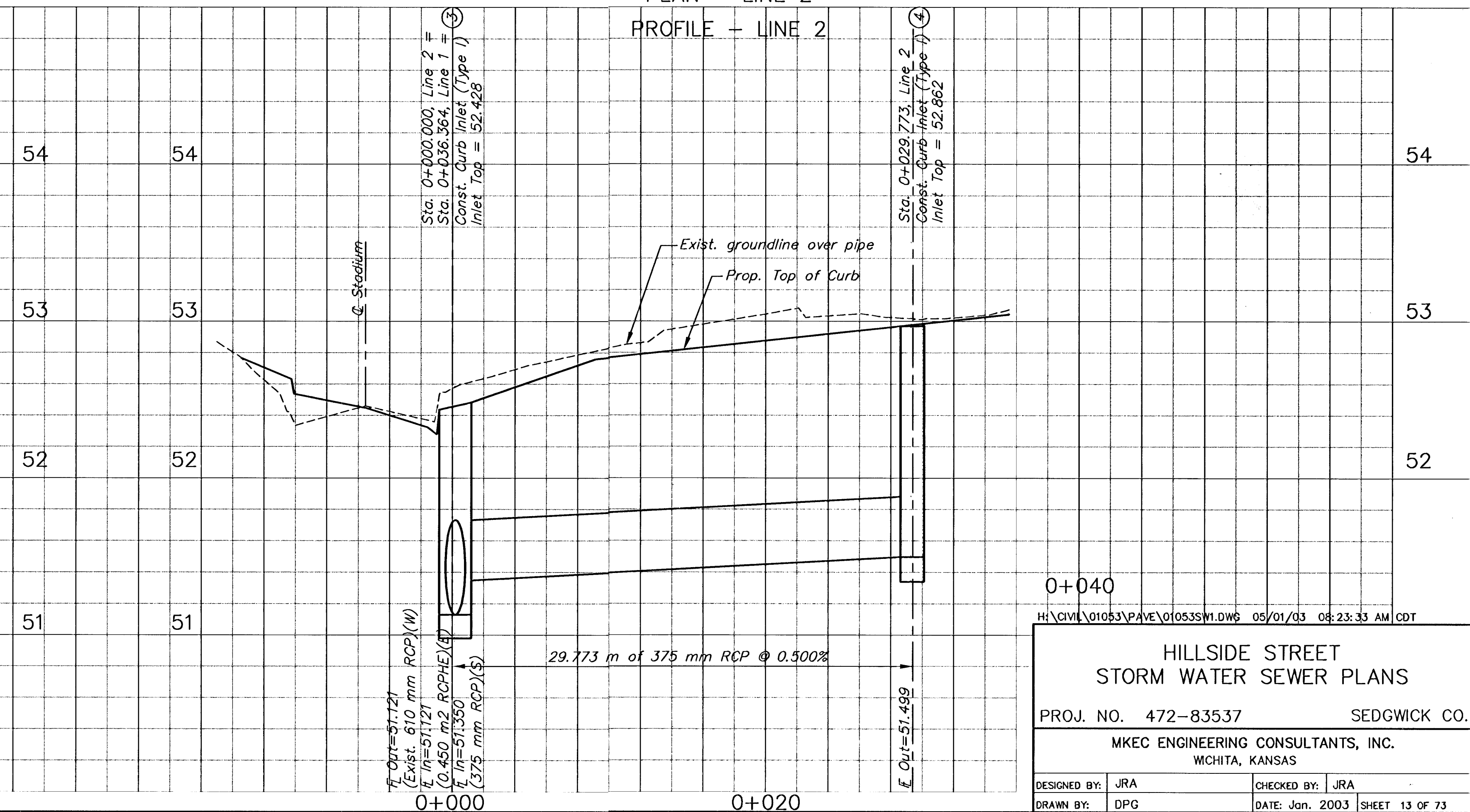
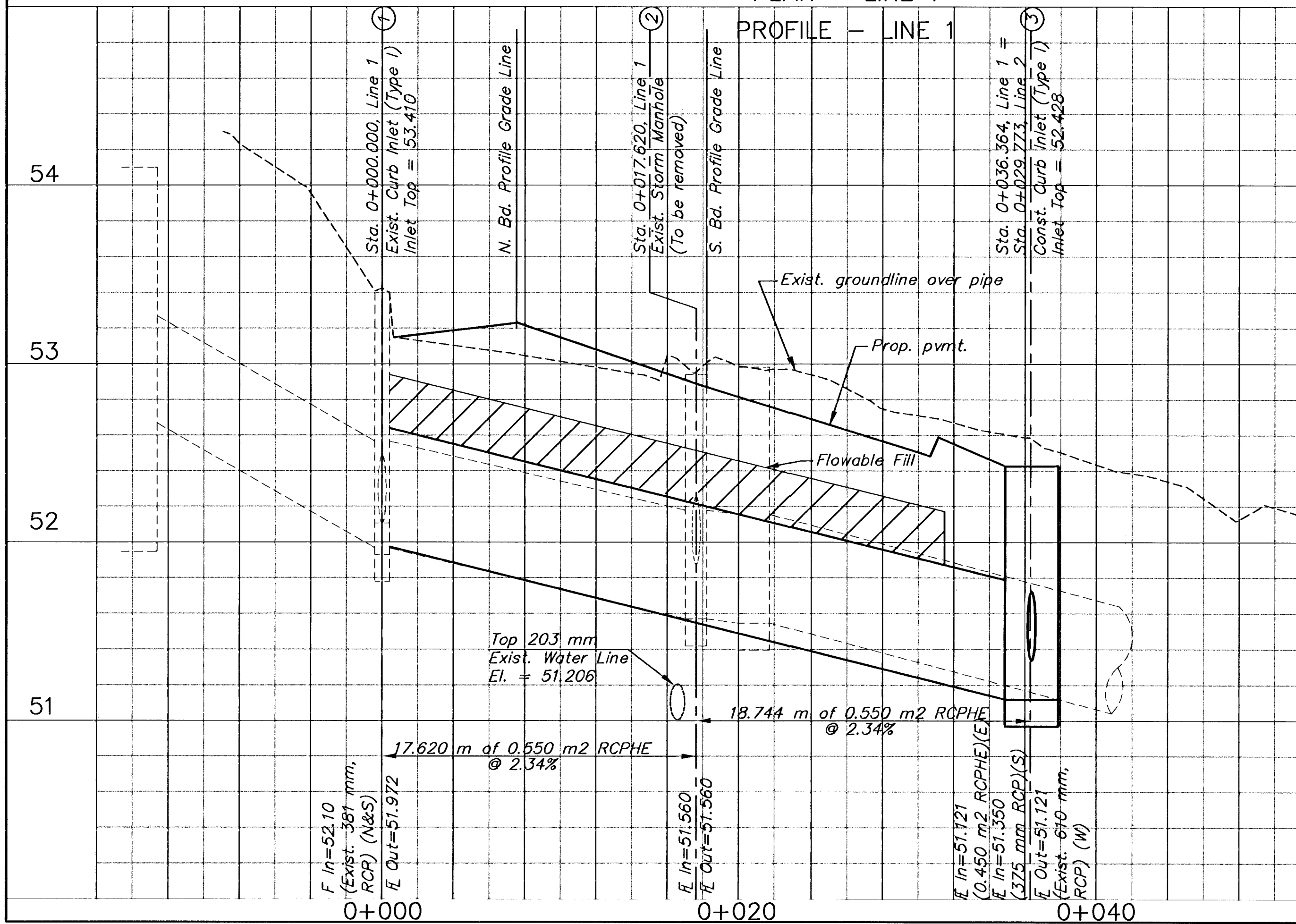
Sta. 0+036.364, Line 1 =
 Sta. 0+029.773, Line 2
 B.L. Sta. 20+438.060, 18.201 m Lt.
 Const. Curb Inlet (Type I)
 W = 2.24 m, L = 3.00 m H = 2.60 m
 Inlet Top = 52.428
 Connect Median and Underdrain
 into new inlet
 See Sheet No.



PLAN - LINE 1



PLAN - LINE 2



0+040

H:\CIVIL\01053\PAVE\01053SW1.DWG 05/01/03 08:23:33 AM CDT

HILLSIDE STREET
 STORM WATER SEWER PLANS

PROJ. NO. 472-83537 SEDGWICK CO.

MKEC ENGINEERING CONSULTANTS, INC.
 WICHITA, KANSAS

DESIGNED BY: JRA CHECKED BY: JRA
 DRAWN BY: DPG DATE: Jan. 2003 SHEET 13 OF 73