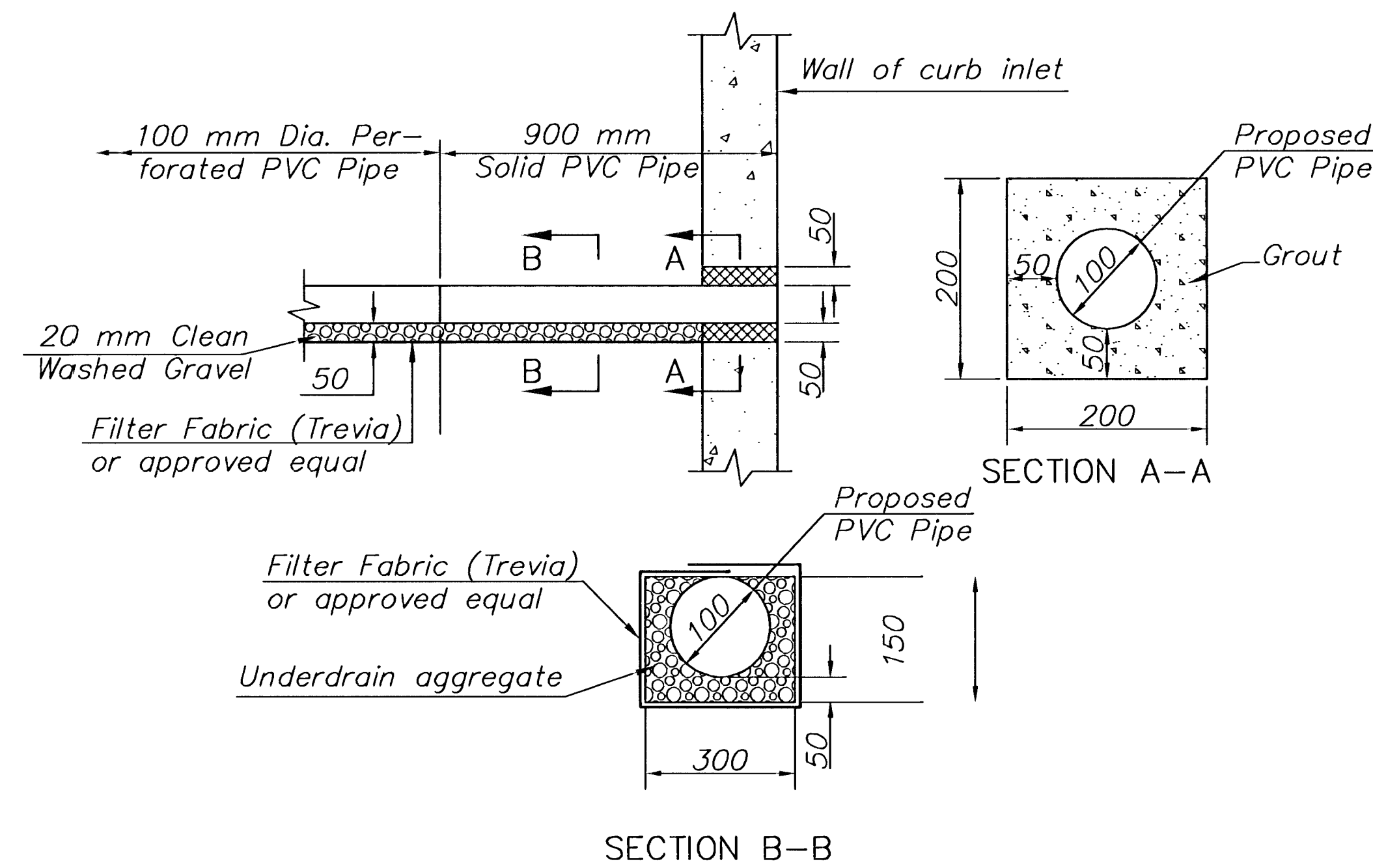
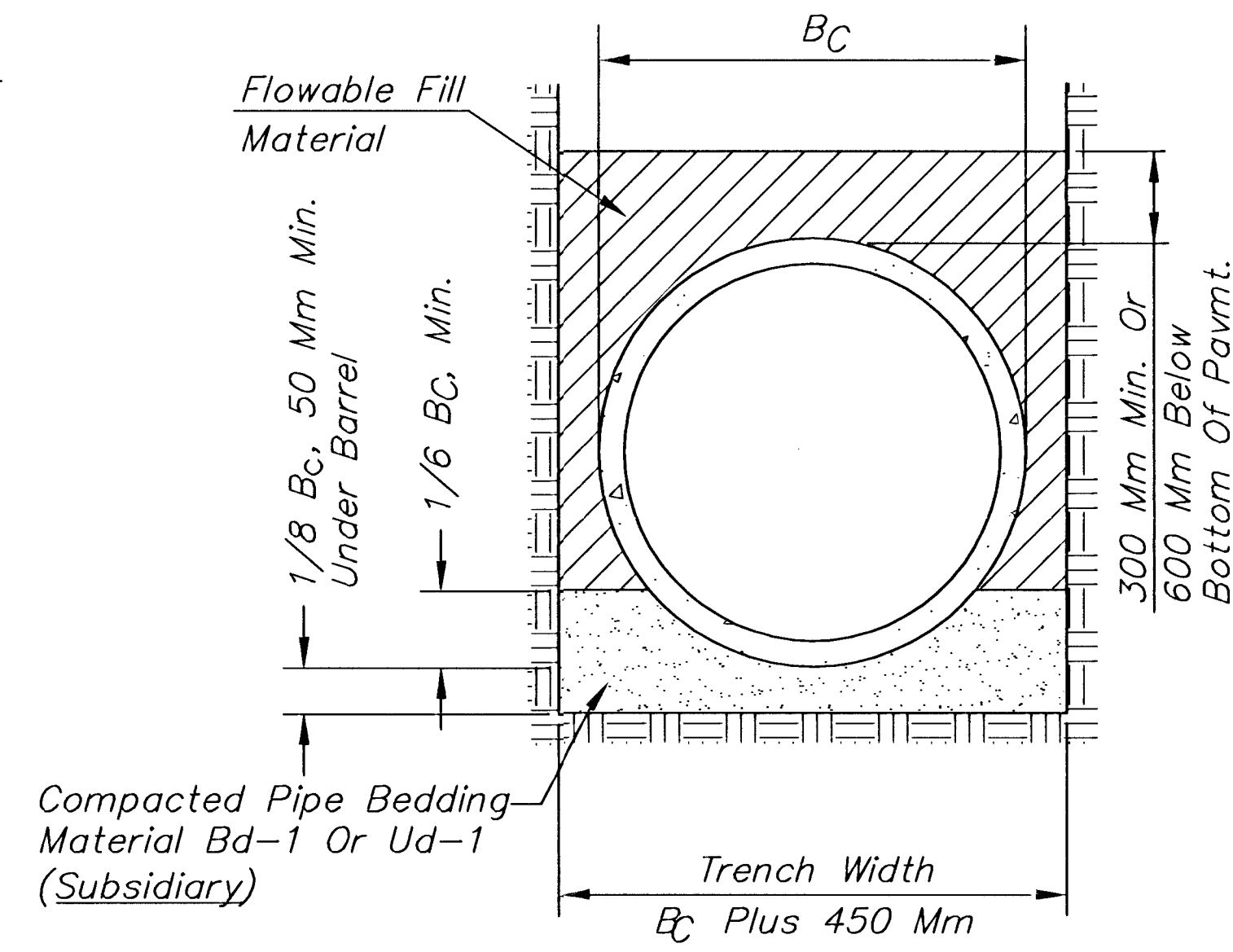


PAVEMENT UNDERDRAIN PLAN
AT BACK OF CURB
NO SCALE



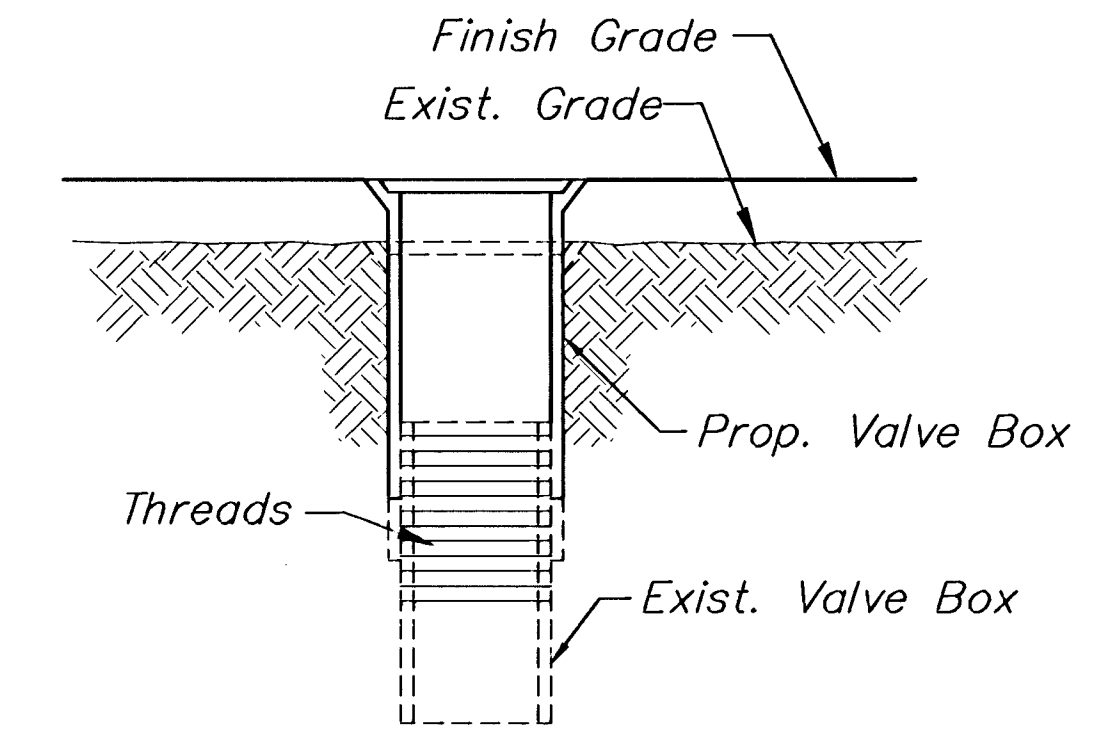
MEDIAN PIPE UNDERDRAIN CONNECTION DETAIL
(PAVEMENT UNDERDRAIN CONNECTION SIMILAR)

Contractor to remove 200 mm x 200 mm Section from exist./new curb inlet and patch around 100 mm (Solid) PVC Pipe. All costs associated with making connections will be Subsidiary to either of the appropriate bid items "Pavement Underdrain" or "Median Pipe Underdrain".

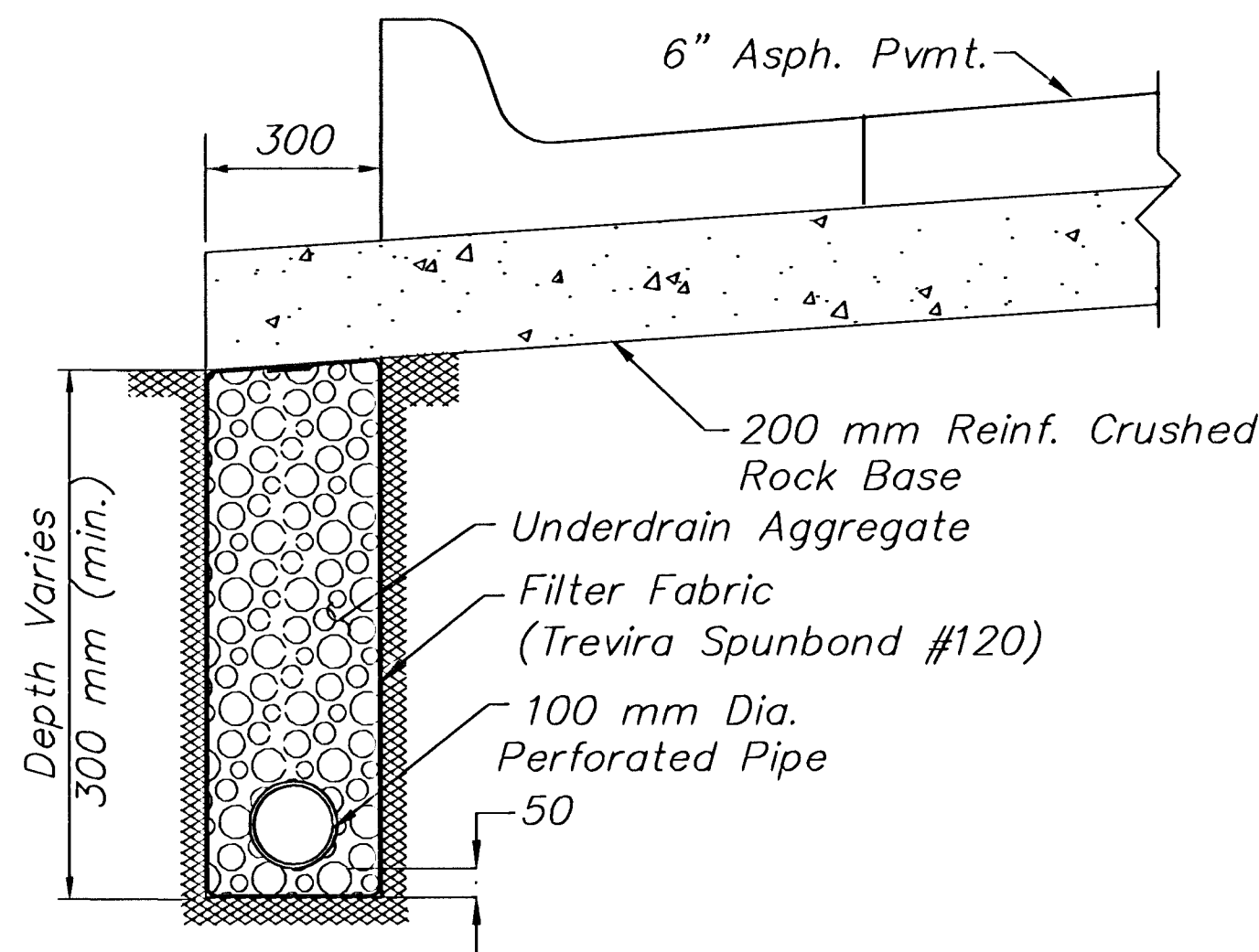


DETAIL OF FLOWABLE FILL FOR STORM SEWERS

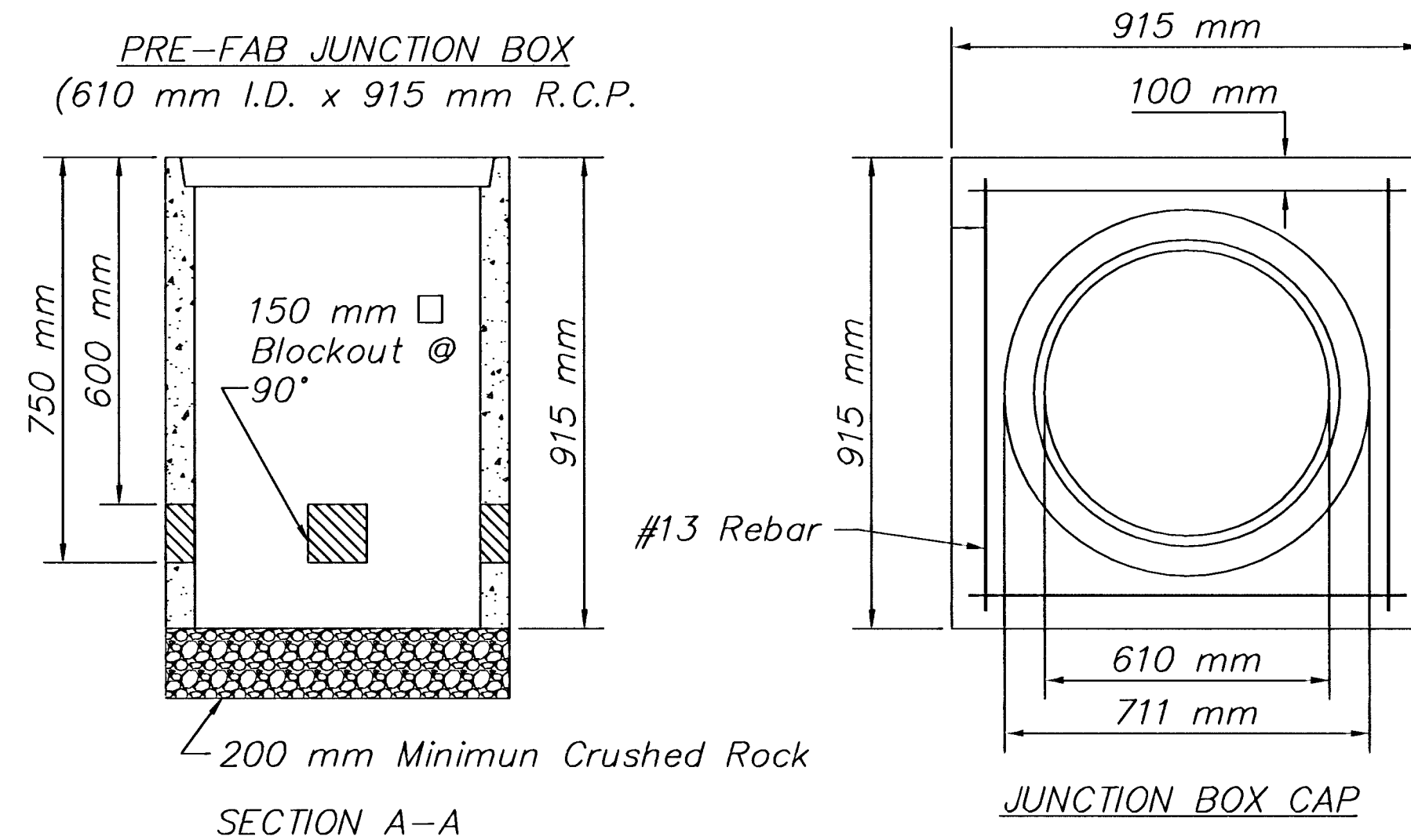
Additional Flowable Grout Outside Of The Above Noted Boundary Plane Shall Be Subsidiary.
Note: Cure Time To Be 3 Days Prior To Backfill



VALVE BOX ADJUSTMENT DETAIL
Valve Adjustment Shall Be Paid As "Adjustment Of Valve Boxes".

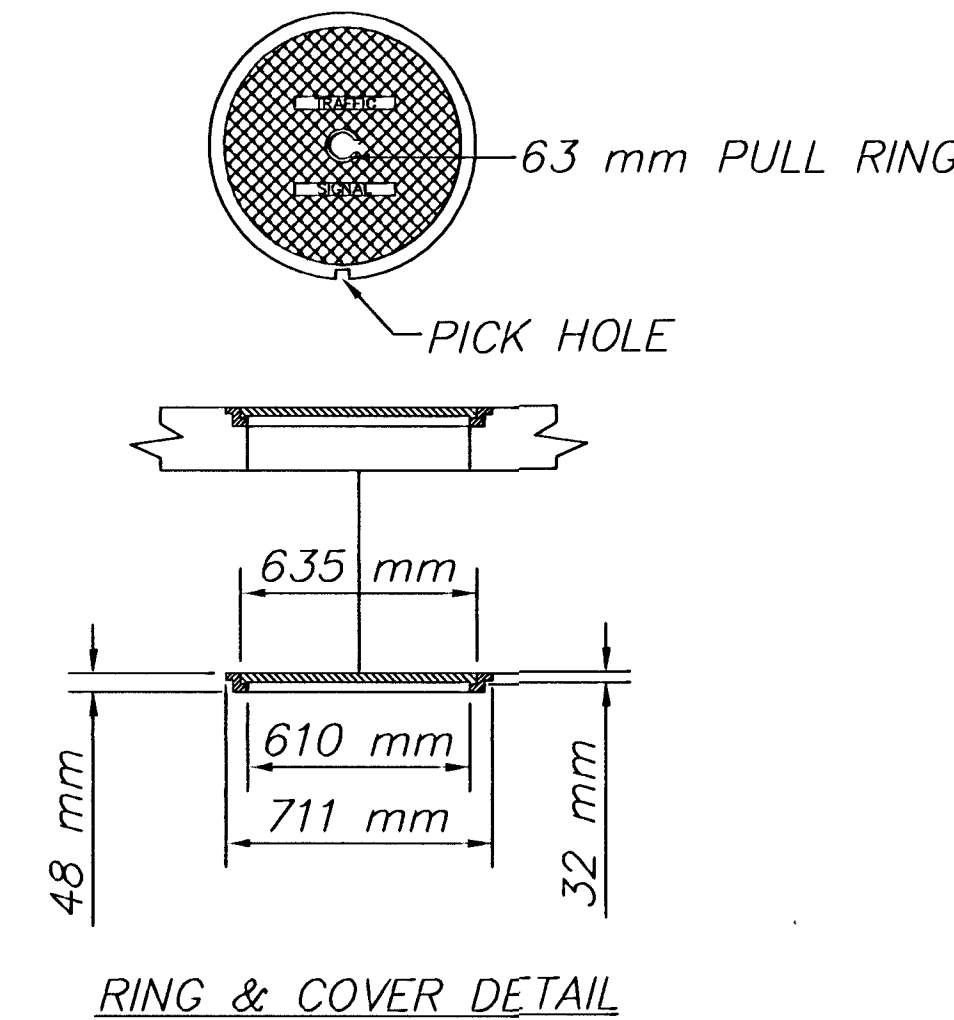


PAVEMENT UNDERDRAIN SECTION A-A
AT BACK OF CURB
NO SCALE

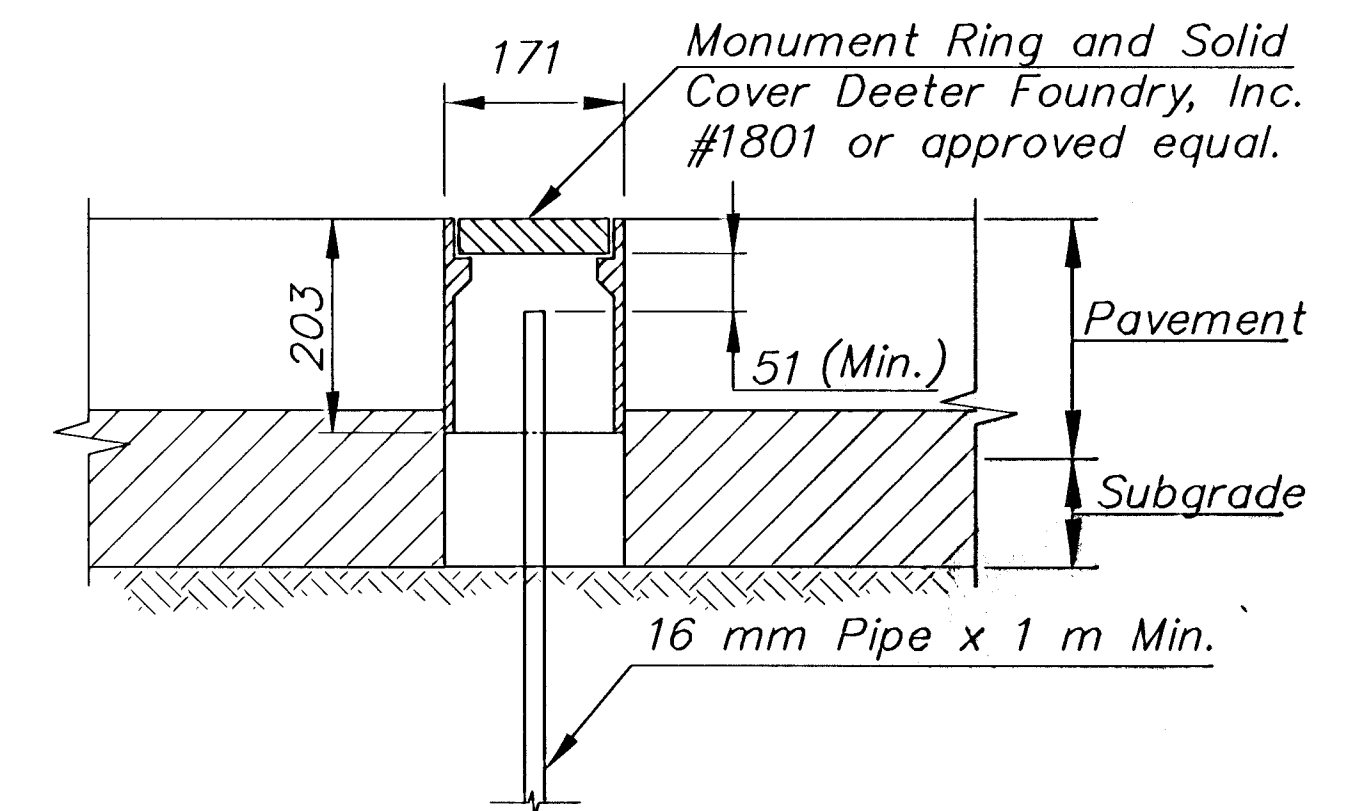


SECTION A-A

915 mm x 915 mm x 150 mm Top of cap to be flush with ground level



RING & COVER DETAIL



SURVEY MONUMENT DETAIL
(2 REQUIRED)

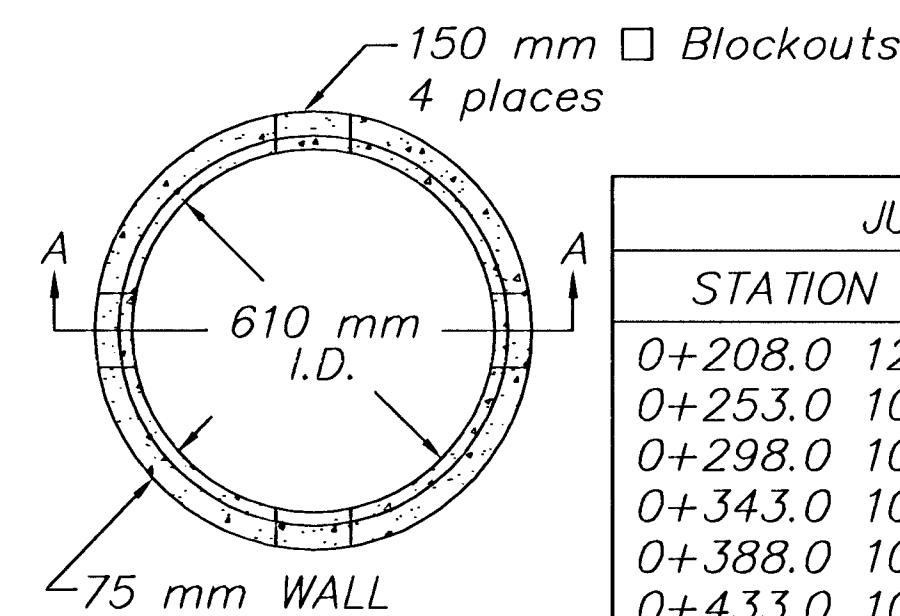
The Installation of Survey Monument shall be Subsidiary to the bid item "Monument Box, Installation Only". All material to be furnished by the Contractor.

UNDERDRAIN AGGREGATE

Percent Of Aggregate Retained

1"	0
3/4	20-60
3/8	45-80
#4	90-100
#8	95-100

Rock Quality Shall Conform To The Requirements Specified By The KDOT 1990 Edition Standard Specification Subsection 1102 For Durability Class 1.



JUNCTION BOX SUMMARY			
STATION OFFSET		STATION OFFSET	
0+208.0	12.2 m Rt.	0+515.0	17.2 m Rt.
0+253.0	10.1 m Rt.	0+599.8	14.1 m Rt.
0+298.0	10.1 m Rt.	0+604.8	14.1 m Rt.
0+343.0	10.1 m Rt.	0+649.7	14.1 m Rt.
0+388.0	10.1 m Rt.	0+694.7	15.1 m Rt.
0+433.0	10.1 m Rt.	0+739.7	15.1 m Rt.
0+476.9	18.1 m Rt.		

TRAFFIC JUNCTION BOX DETAIL
(13 REQUIRED)

- NOTES:
- Conduit connection to be flush to within 125 mm of inside face of side wall. Conduit to drain into Junction Box.
 - Conduit connections to Junction Box shall be terminated with plastic cable bushing.
 - Conduit shall be sealed with approved sealer at inside wall face.
 - Slope conduit to drain as directed by the Engineer.

- TRENCHING:
- Depth to be 750 mm minimum with rock & stubble free backfill to serve as bedding material. Maintain minimum conduit depth in trench.
 - Backfill to be compacted in 150 mm loose lifts by hand or mechanical tamping to a 95% standard density.

H:\CIVIL\01053\PAVE\01053DD2.DWG 04/30/03 03:19:18 PM CDT

 MKEC ENGINEERING CONSULTANTS 411 N. WEBB ROAD WICHITA, KS. 67206 316-684-9600	NORTH HILLSIDE STREET PAVING PLANS PROJECT NAME		
	MISCELLANEOUS DETAILS SHEET TITLE		
	JRA DESIGN BY	DPG DRAWN BY	JRA CHECKED BY
	APRIL 2003 DATE	01053 JOB NO.	20 / 73 SHEET/OF