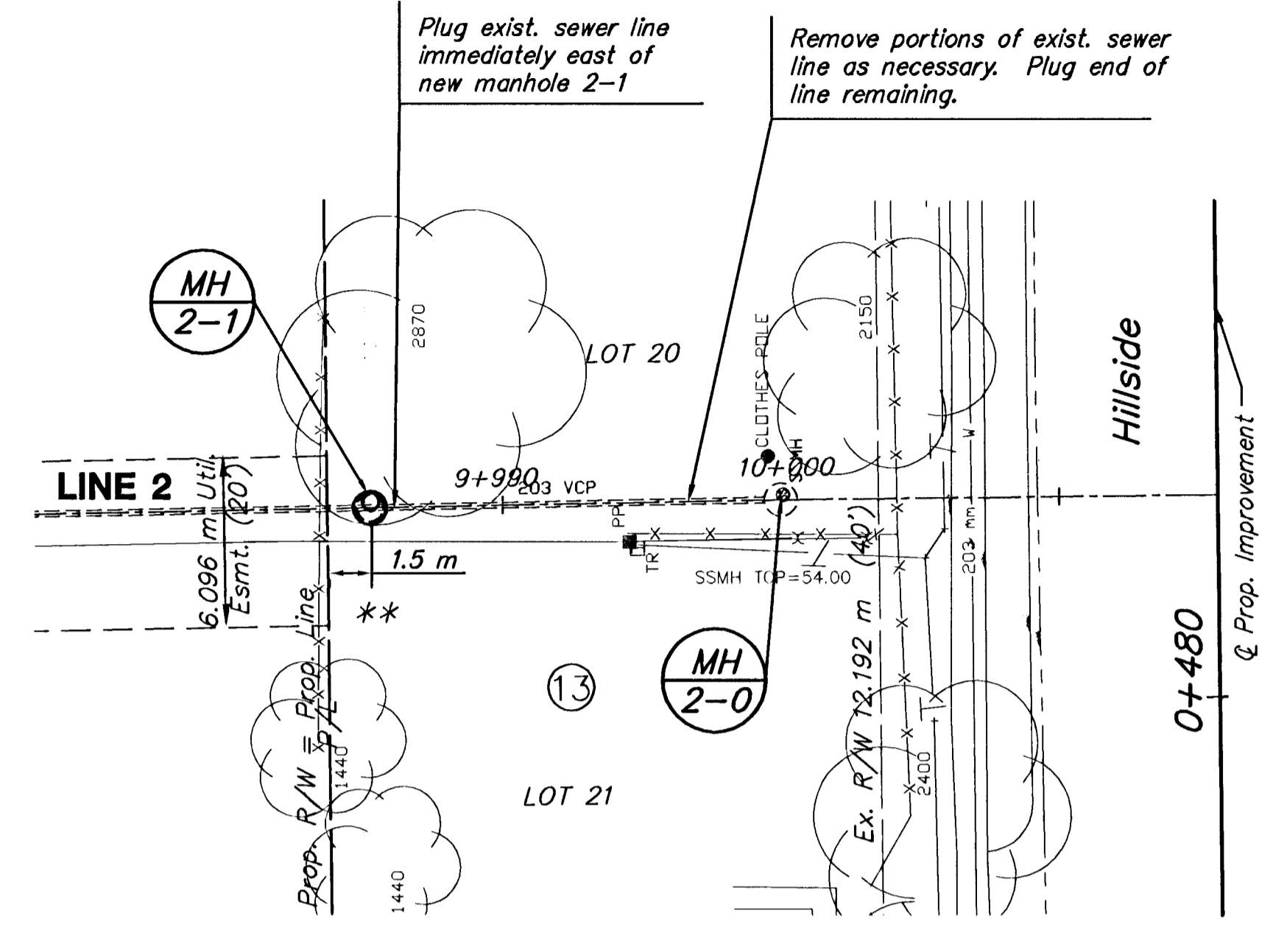


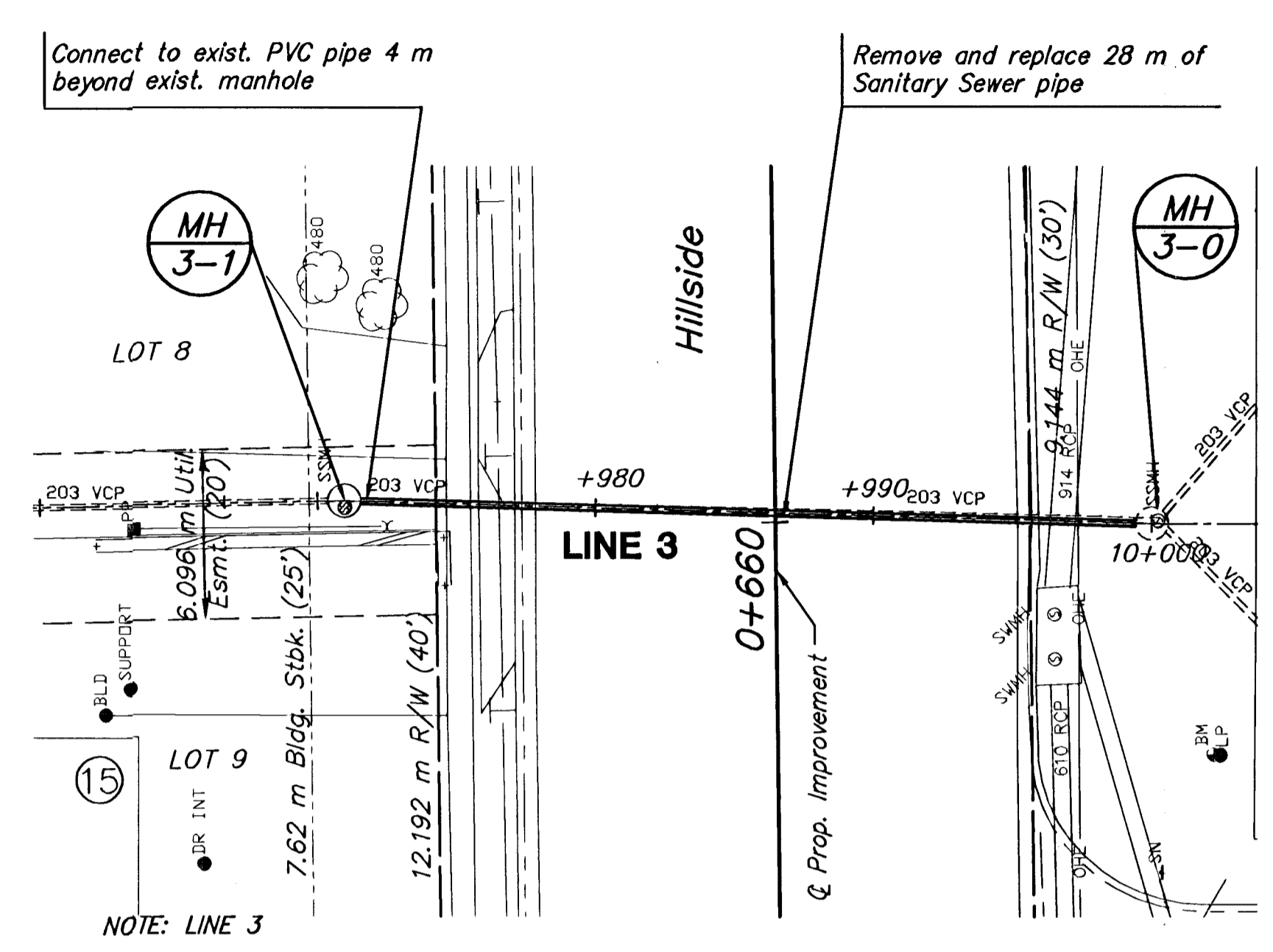
** SBC lines and cabinet will be installed prior to sanitary sewer construction. Contact SBC for cable alignment and cabinet location.

PLAN - LINE 1



** SBC cable lines will be installed prior to sanitary sewer construction. Contact SBC for cable alignment.

PLAN - LINE 2



NOTE: LINE 3

1. Trenchless replacement may be performed in place of open trench construction.
2. Maintain 2-way traffic on Hillside through construction. Construction should be sequenced in two phases starting with the downstream portion. Refer to Sheet No.55 for typical traffic control.

SCALE: 1:200

