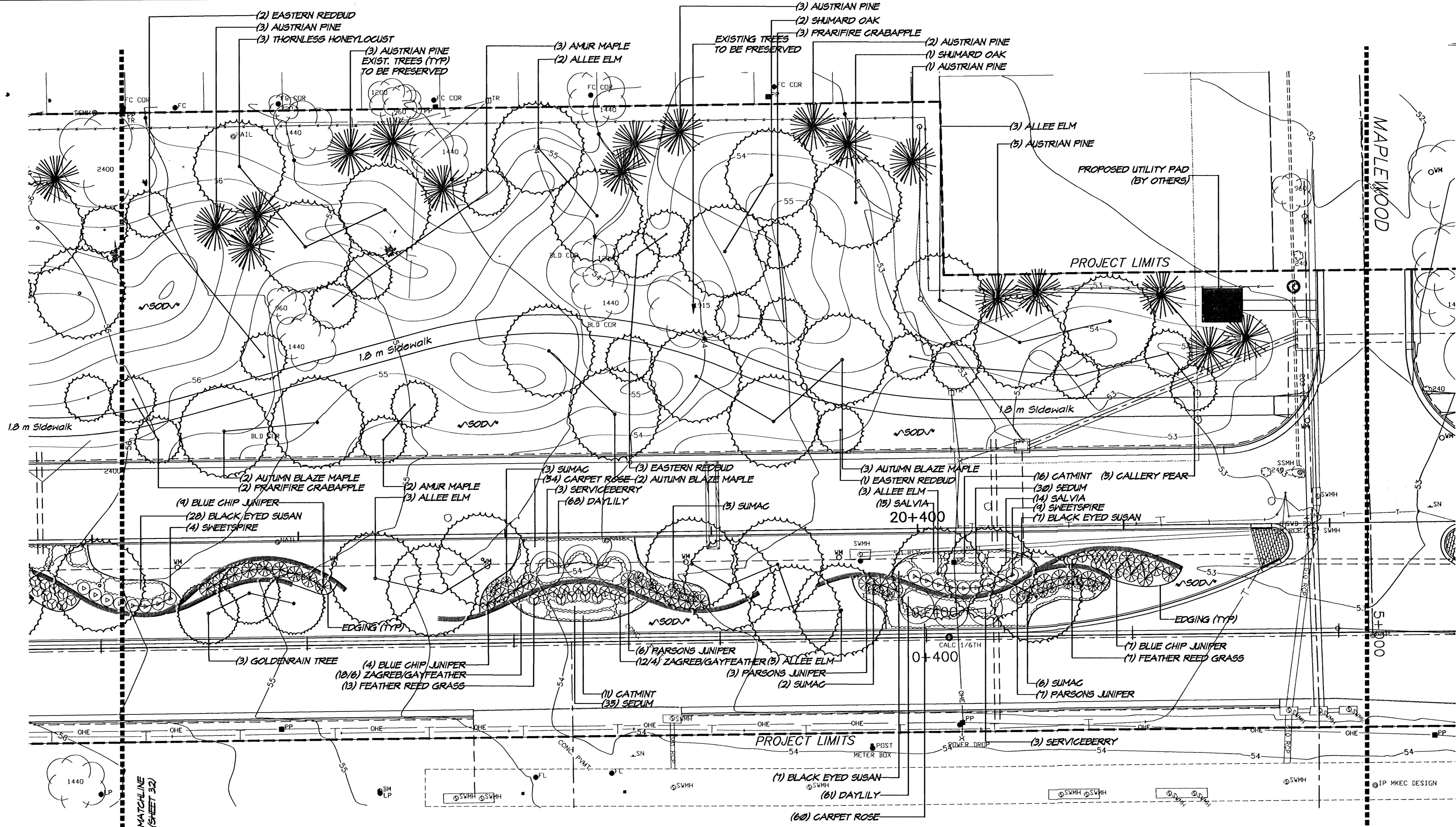


Scale: 1:200



PLANT LIST (THIS SHEET)

| QTY. | COMMON NAME | BOTANICAL NAME | SIZE/COMMENT |
|---------------------------|--------------------------------|--|--------------------------------|
| LARGE SHADE TREES | | | |
| 3 | PANICLED GOLDENRAIN TREE | <i>Koeleruteria paniculata</i> | 2'-2.5' Cal., Balled-in-Burlap |
| 3 | SHUMARD OAK | <i>Quercus shumardii</i> | 2'-2.5' Cal., Balled-in-Burlap |
| 16 | ALLEE ELM | <i>Ulmus parvifolia 'Allee'</i> | 3'-3.5' Cal., Balled-in-Burlap |
| 7 | AUTUMN BLAZE MAPLE | <i>Acer rubrum x freemanii</i> | 2'-2.5' Cal., Balled-in-Burlap |
| 3 | THORNLESS HONEYLOCUST | <i>Gleditsia triacanthos var. inermis</i> | 2'-2.5' Cal., Balled-in-Burlap |
| EVERGREENS | | | |
| 17 | AUSTRIAN PINE | <i>Pinus nigra</i> | 8'-10' Hgt., Balled-in-Burlap |
| ORNAMENTAL TREES | | | |
| 5 | PRAIRIFIRE CRABAPPLE | <i>Malus 'Prairifire'</i> | 2' Cal., Balled-in-Burlap |
| 6 | EASTERN REDBUD | <i>Cercis canadensis</i> | 8'-10' Hgt., B&B, Clump |
| 5 | GALLERY PEAR | <i>Pyrus calleryana 'Chanticleer'</i> | 2' Cal., Balled-in-Burlap |
| 5 | AMUR MAPLE | <i>Acer ginnala</i> | 8'-10' Hgt., B&B, Clump |
| 6 | AUTUMN BRILLIANCE SERVICEBERRY | <i>Amelanchier x grandiflora 'Autumn Brilliance'</i> | 8'-10' Hgt., B&B, Clump |
| ORNAMENTAL GRASSES | | | |
| 20 | FEATHER REED GRASS | <i>Calamagrostis x acutiflora stricta</i> | 3 gal., 30" O.C. |

PLANT LIST (THIS SHEET CONT.)

| QTY. | COMMON NAME | BOTANICAL NAME | SIZE/COMMENT |
|-------------------|-----------------------------|---|-----------------------------------|
| PERENNIALS | | | |
| 42 | BLACK EYED SUSAN | <i>Rudbeckia fulgida 'Goldsturm'</i> | 1 gal., 24" O.C. |
| 10 | GAY FEATHER | <i>Liatris spicata 'Kobold'</i> | 1 gal., Cluster as directed |
| 30 | 'ZAGREB' COREOPSIS | <i>Coreopsis verticillata 'Zagreb'</i> | 1 gal., 18" O.C. |
| 24 | SALVIA | <i>Salvia x superba 'Mainacht'</i> | 1 gal., 24" O.C. |
| 65 | AUTUMN JOY STONECROP | <i>Sedum x 'Autumn Joy'</i> | 1 gal., 18" O.C., plant 50mm high |
| 124 | STELLA D'ORO DAYLILY | <i>Hemerocallis sp.</i> | 6" Pot, 18" O.C. |
| 114 | PINK CARPET ROSE | <i>Rosa nostrana</i> | 2 gal., 24" O.C. |
| 27 | CATMINT | <i>Nepeta x faassenii</i> | 1 gal., 24" O.C. |
| SHRUBS | | | |
| 20 | BLUE CHIP JUNIPER | <i>Juniperus horizontalis 'Blue Chip'</i> | 5 gal., 5' O.C. |
| 16 | PARSONS JUNIPER | <i>Juniperus davurica</i> | 5 gal., 5' O.C. |
| 16 | HENRY'S GARNET SWEET SPIRE | <i>Itea virginica 'Henry's Garnet'</i> | 5 gal., 4' O.C. |
| 13 | CUTLEAF SUMAC | <i>Rhus typhina laciniata</i> | 3 gal., space as noted |
| SOD | | | |
| SEE SHEET (36) | GARD'N WISE FESCUE/BLUE MIX | <i>Festuca arundinacea</i> | refer to notes and specs. |

H:\CIVIL\01053\PAVE\01053LP2.dwg 05/01/03 02:53:47 PM CDT

PLANTING PLAN
 STA. 0+320 TO STA. 0+440
 PROJ. NO. 472-83537 SEDGWICK CO.
 MKEC ENGINEERING CONSULTANTS, INC.
 WICHITA, KANSAS

| | |
|-------------------|------------------|
| DESIGNED BY: MKEC | CHECKED BY: MKEC |
| DRAWN BY: B.J.H. | DATE: 04/03 |

SHEET 33 OF 73