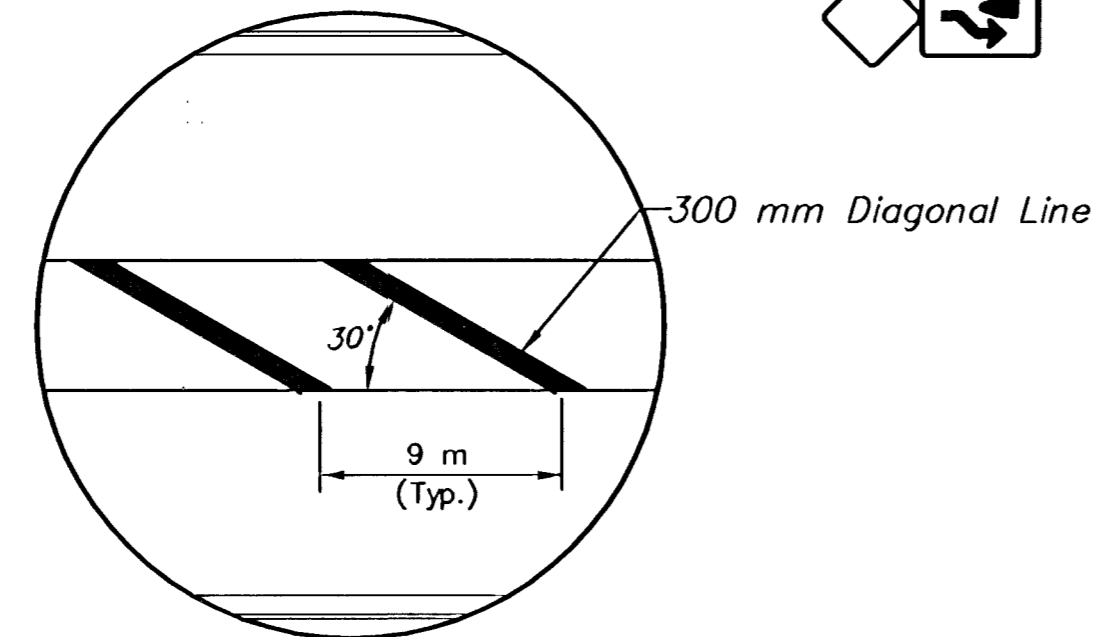
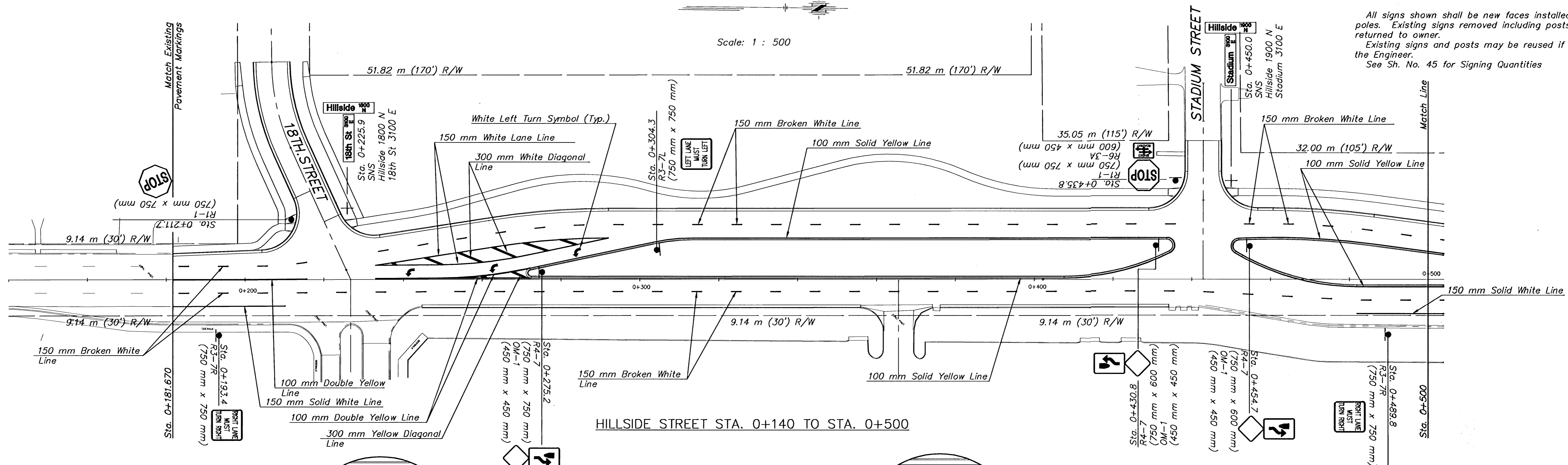
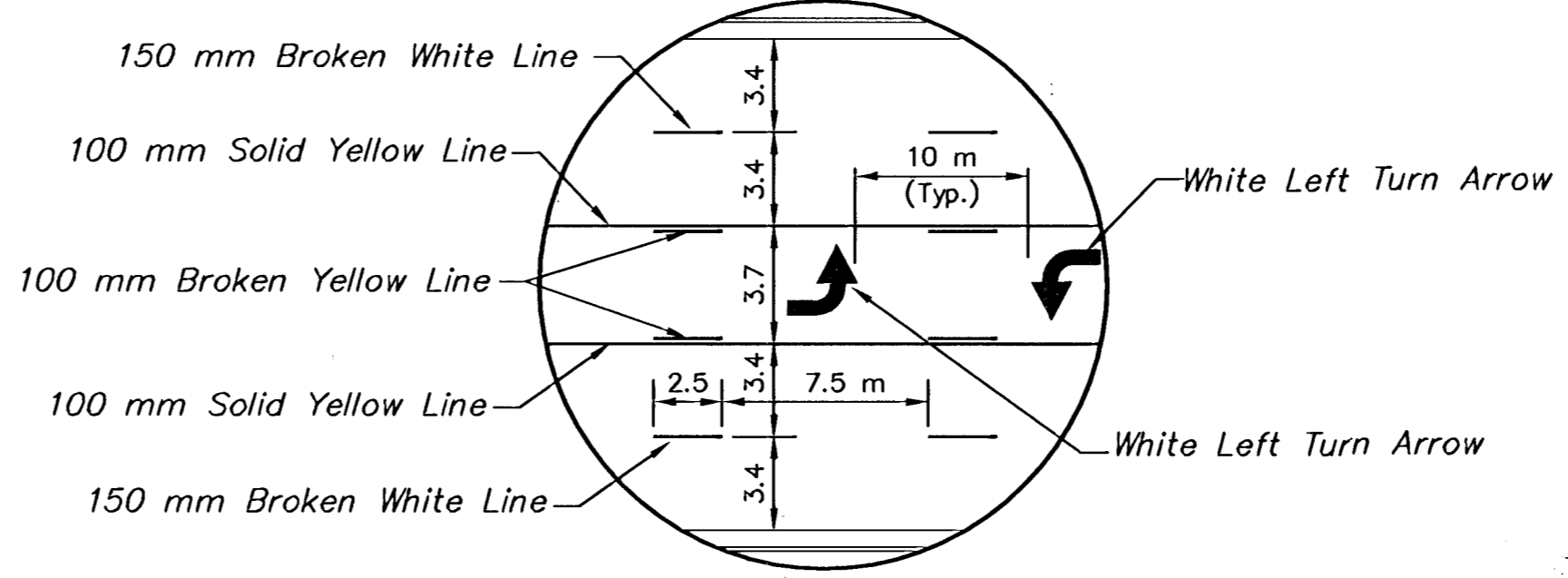


Note:
 All signs shown shall be new faces installed on new poles. Existing signs removed including posts shall be returned to owner.
 Existing signs and posts may be reused if approved by the Engineer.
 See Sh. No. 45 for Signing Quantities

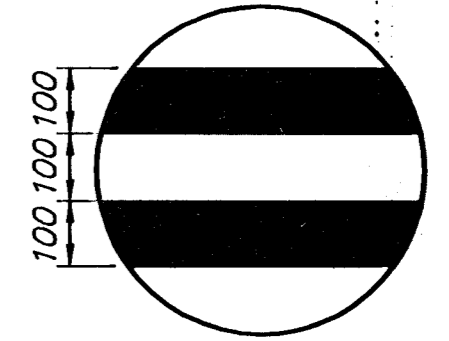
Scale: 1 : 500



TYPICAL DIAGONAL SPACING

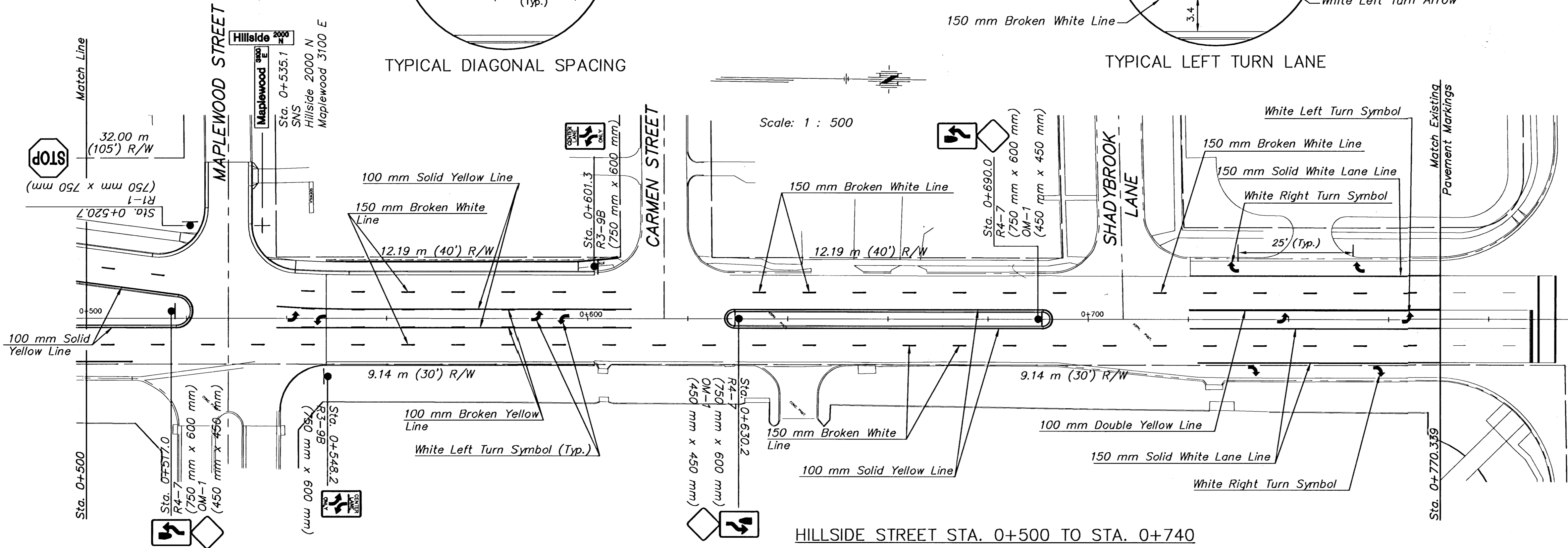


TYPICAL LEFT TURN LANE



TYPICAL 100 mm DOUBLE YELLOW LINE

Scale: 1 : 500



HILLSIDE STREET STA. 0+500 TO STA. 0+740

SUMMARY OF QUANTITIES PAVEMENT MARKING		
ITEM	QUANTITY	UNITS
150 mm WHITE Line	685.0	m
300 mm WHITE Line	27.3	m
300 mm YELLOW Line	5.9	m
100 mm YELLOW Line	1079.6	m
White RIGHT Turn Symbol	4	Each
White LEFT Turn Symbol	9	Each
All totals reflect actual quantity of pavement marking materials required.		

H:\CIVIL\01053\STRIPING\01053STP.DWG 05/01/03 08:25:27 AM CDT



**NORTH HILLSIDE STREET
PAVING PLANS**
 PROJECT NAME

PAVEMENT MARKING AND SIGNING PLAN
 SHEET TITLE

JRA DESIGN BY: WNJ DRAWN BY: JRA CHECKED BY:

APRIL 2003 DATE: 01053 JOB NO. 43 / 73 SHEET/OF