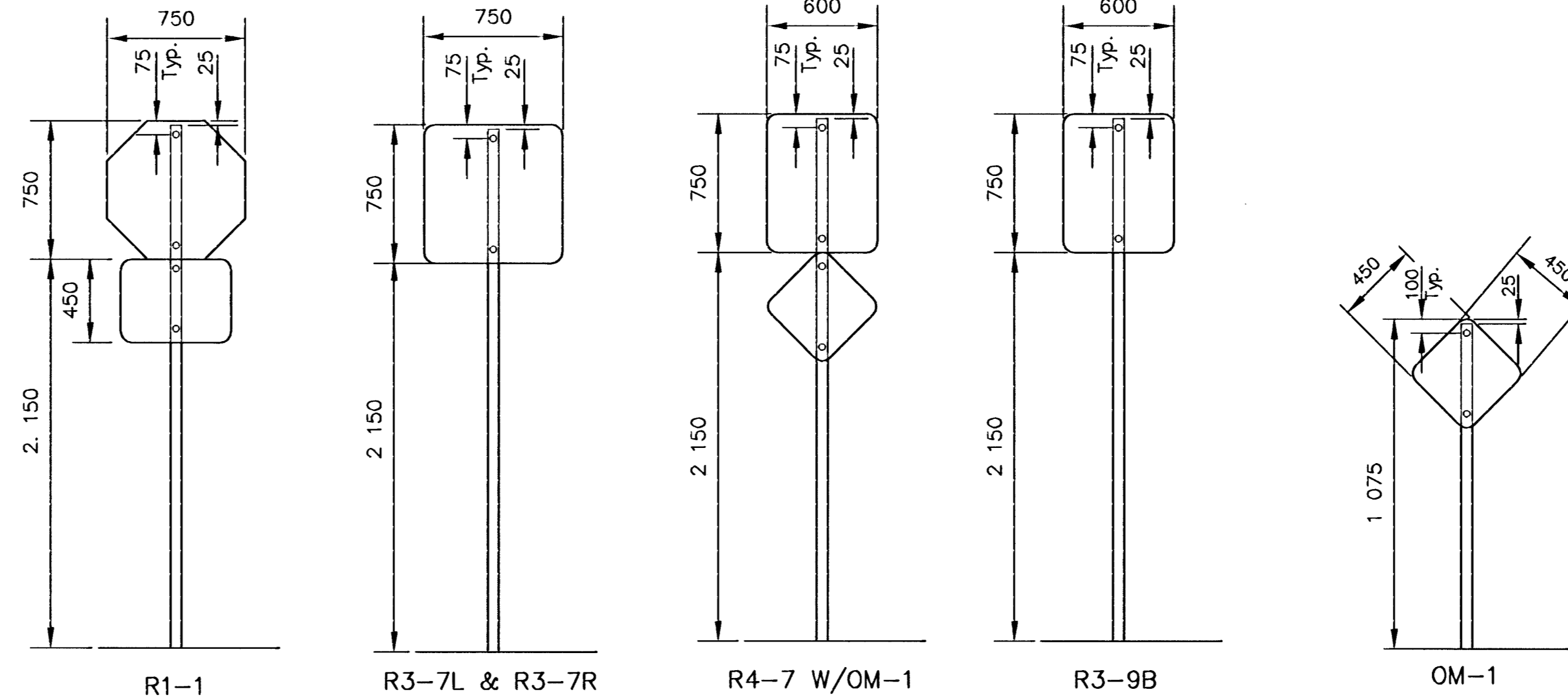


TRAFFIC CONTROL SIGNS & SIGN POST

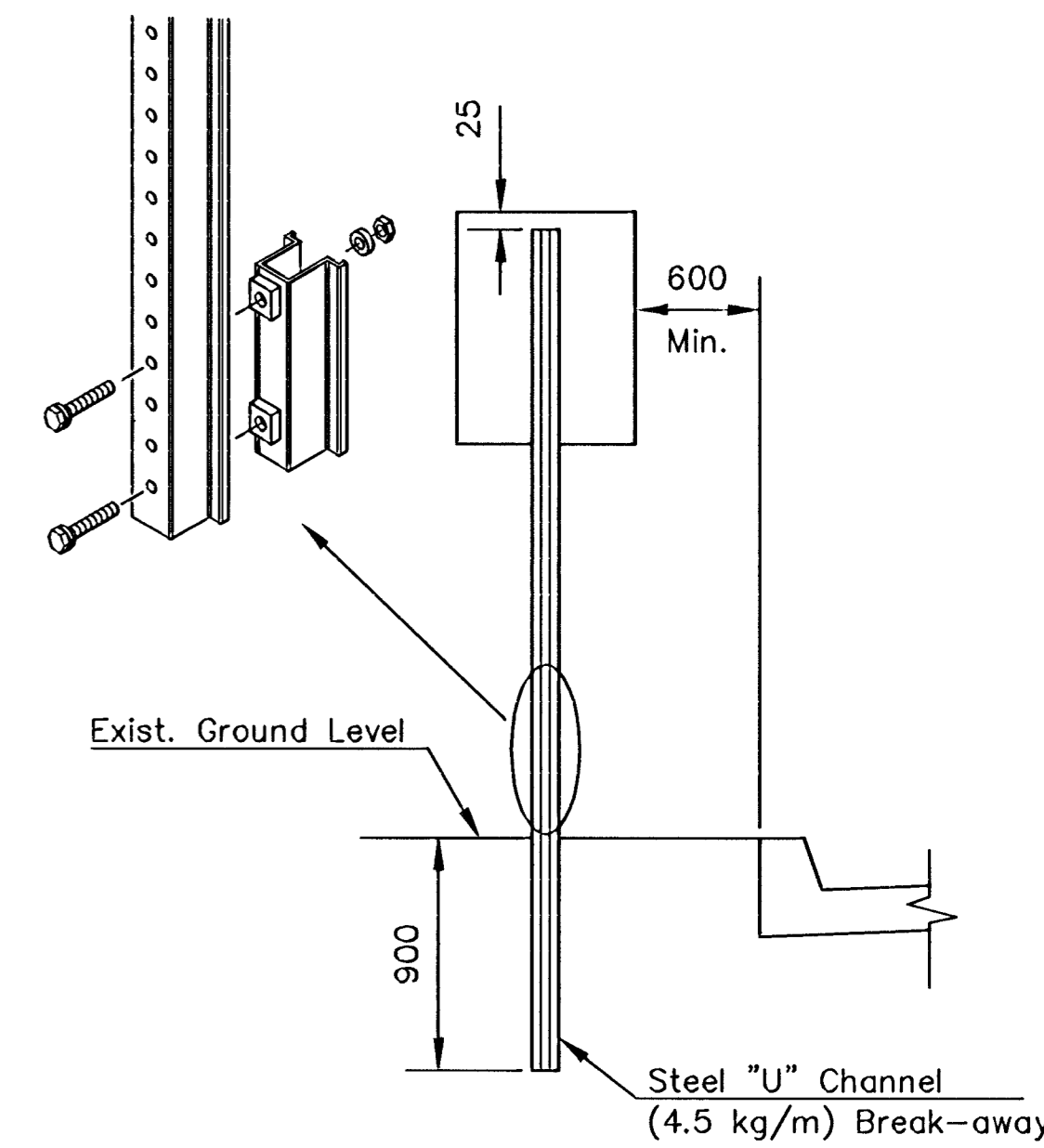
Station	Location from C	Classification - Each											Sign Post Length	
		R1-1	R4-7	OM-1	R3-7L	R3-7R	R3-9B	R6-3A	SNS *	Breakaway 45 mm x 45 mm	"U"- Channel			
Hillside														
0+193.4	RT.					1							2.90	
0+211.7	LT.	1											2.90	
0+225.9	LT.													1
0+275.2	LT.		1	1									2.90	
0+304.3	LT.				1								2.90	
0+430.8	LT.		1	1									2.90	
0+435.8	LT.	1											2.90	
0+450.0	LT.													1
0+454.7	LT.		1	1									2.90	
0+489.8	RT.					1							2.90	
0+517.0	LT.		1	1									2.90	
0+520.7	LT.	1											2.90	
0+535.1	LT.													1
0+548.2	RT.												2.90	
0+601.3	LT.					1							2.90	
0+630.2	C		1	1									2.90	
0+690.0	C		1	1									2.90	

*SNS Street Name Sign See Typical Mounting Installation Detail Sht. No.

Classification	Quantity	Area (m ²)	Length (m)	Weight (kg)
R1-1	3	1.68	2.90	13.5
R4-7	6	2.70	2.90	12.6
OM-1	6	0.60	2.90	2.7
R3-7L	1	0.56	2.90	1.3
R3-7R	2	1.12	2.90	2.6
R3-9B	2	0.45	2.90	1.8
R6-3A	1	0.27	2.90	1.0
SNS *	3	0.81	2.90	3.6
Total	30	8.64	87.0	40.60



SIGN MOUNTING DETAILS



TRAFFIC SIGN INSTALLATION DETAIL FOR SIGNS NOT GREATER THAN 300 mm WIDE

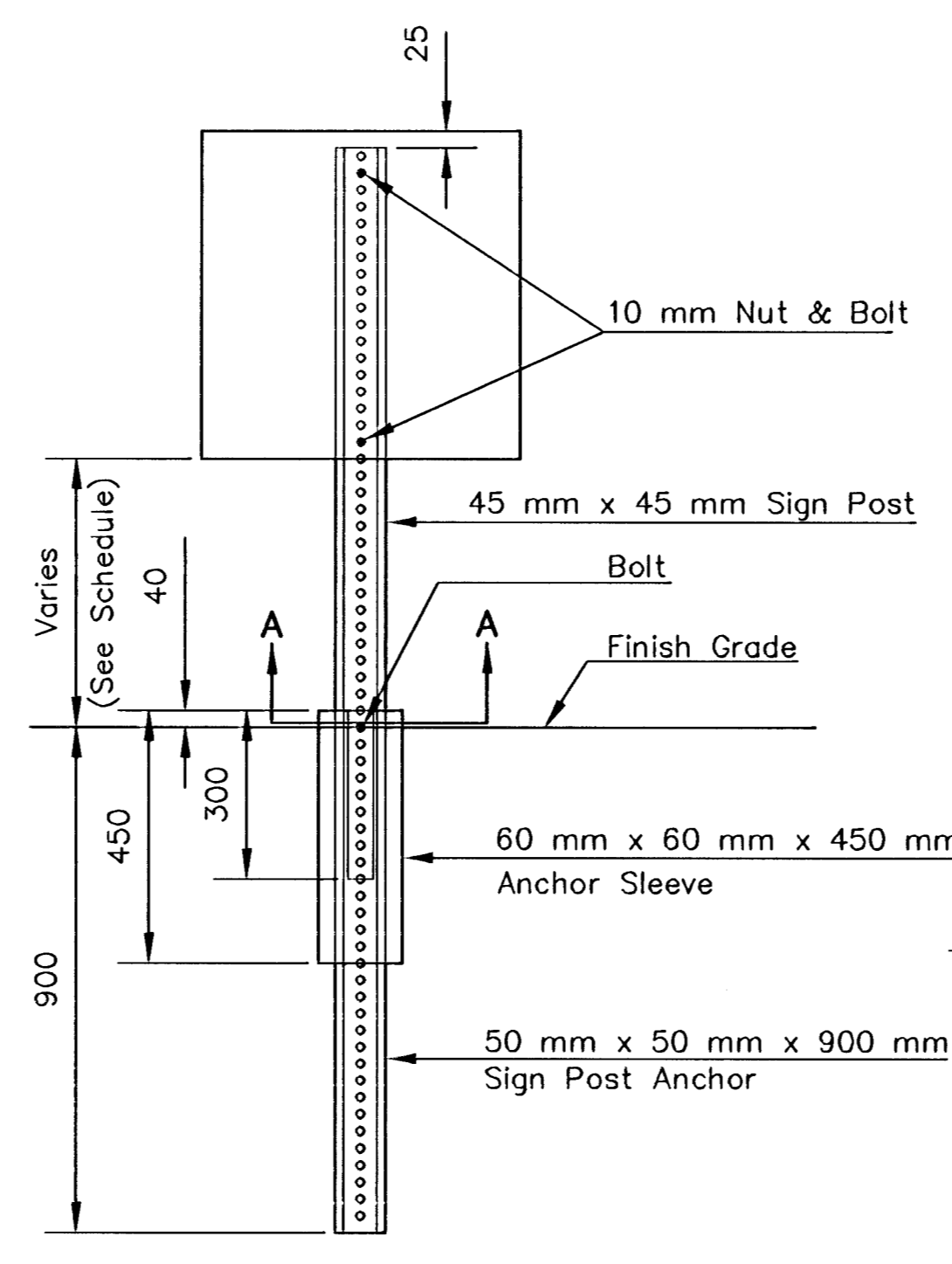
SIGN POST LENGTH SUMMARY	
BREAKAWAY SIGN POST:	
45 mm x 45 mm x LENGTH	EACH
1.05	
2.9	14
60 mm x 60 mm x 450 mm	14
50 mm x 50 mm x 900 mm	14

SUMMARY OF MATERIALS		
ITEMS	TOTAL	UNIT
Sign Face, (High Intensity HA Reflective Sheeting)	8.43	m ²
Steel "U" Channel Sign Post	-	m
Breakaway Sign Post, 45 mm x 45 mm	40.60	m
Breakaway Anchor Sleeve, 60 mm x 60 mm x 450 mm	6.30	m
Breakaway Sign Post Anchor, 50 mm x 50 mm x 900 mm	12.60	m

U-CHANNEL	
LENGTH	EACH
STUBS 0.90 m	
POSTS 2.44 m	
POSTS 2.75 m	
POSTS 2.90 m	
POSTS 3.35 m	

RECAPITULATION OF MATERIALS		
BID ITEMS	TOTAL	UNIT
Signing	LUMP SUM	L.S.

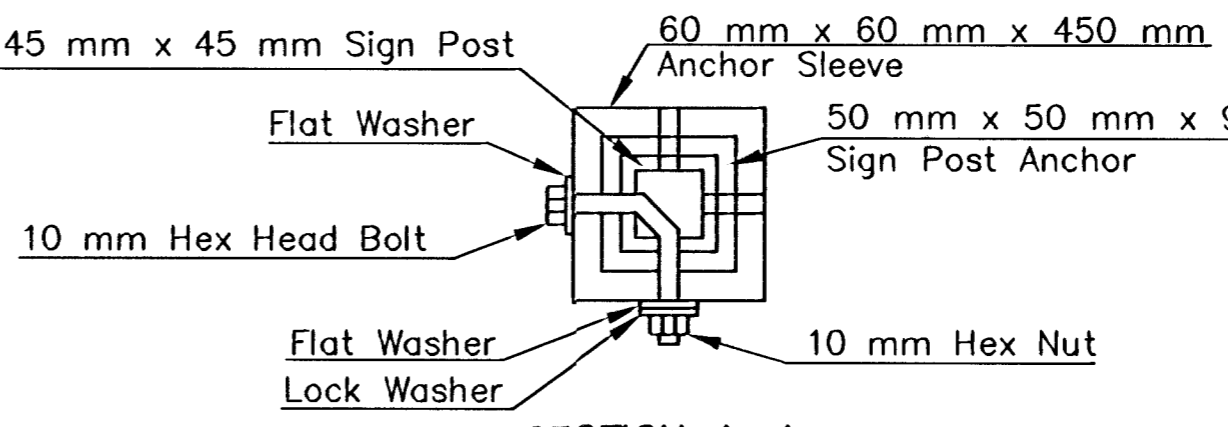
SIGN DESCRIPTION			
CLASSIFICATION	TYPE	SIZE	AREA
R1-1	STOP SIGN	750 x 750	0.56 m ²
R4-7	KEEP RIGHT	750 x 600	0.45 m ²
OM-1	OBJECT MARKER	450 x 450	0.20 m ²
R3-7L	LEFT LANE MUST TURN LEFT	750 x 750	0.56 m ²
R3-7R	RIGHT LANE MUST TURN RIGHT	750 x 750	0.56 m ²
R3-9B	CENTER LANE LEFT TURN ONLY	750 x 600	0.45 m ²
R6-3A	DIVIDED ROADWAY	600 x 450	0.27 m ²



- PAVEMENT INSTALLATION SEQUENCE
- SIGN POST ANCHOR DRIVEN INTO SUBGRADE PRIOR TO THE PLACEMENT OF THE PAVEMENT.
 - ANCHOR SLEEVE DRIVEN INTO SUBGRADE OVER THE SIGN POST ANCHOR PRIOR TO THE PLACEMENT OF THE PAVEMENT.
 - INSERT SIGN POST INTO THE SIGN POST ANCHOR AND BOLT IN PLACE.
- GROUND INSTALLATION SEQUENCE
- SIGN POST ANCHOR DRIVEN INTO THE GROUND.
 - ANCHOR SLEEVE DRIVEN INTO THE GROUND OVER THE SIGN POST ANCHOR.
 - INSERT SIGN POST INTO THE SIGN POST ANCHOR AND BOLT IN PLACE.

NOTE: IN ALL INSTALLATIONS THE FIRST HOLE ABOVE THE FINISHED GRADE LEVEL IN ALL THREE UNITS MUST BE IN LINE FOR INSERTION OF THE BOLT.

ALL BOLTS AND NUTS FOR FASTENING THE SIGNS AND SIGN POST ASSEMBLY SHALL COMPLY WITH SECTION 1614 AND ALL WASHERS SHALL COMPLY WITH SECTION 1614 OF THE STANDARD SPECIFICATION FOR STATE ROAD AND BRIDGE CONSTRUCTION (1990 EDITION) AND SHALL BE SUBSIDIARY ITEM.



BREAK-AWAY SIGN POST DETAIL SECTION A-A

NOTE: ALL LETTER, NUMBER, & SYMBOL SIZES, SPACING, & COLORS AND THE SIGN COLORS SHALL CONFORM TO THE CURRENT "MANUAL ON UNIFORM TRAFFIC CONTROL DEVICES."

ALL SIGN MATERIAL TO BE 0.002 mm ALUMINUM.

H:\CIVIL\01053\striping\SIGN\DTL4.DWG 04/30/03 04:31:17 PM CDT			
WICHITA, KANSAS			
SIGNING DETAILS			
JOB NO.	DATE:	CH'KD:	
SCALE: NONE	DRAWN:	APP'VD:	SHEET 45 OF 73