

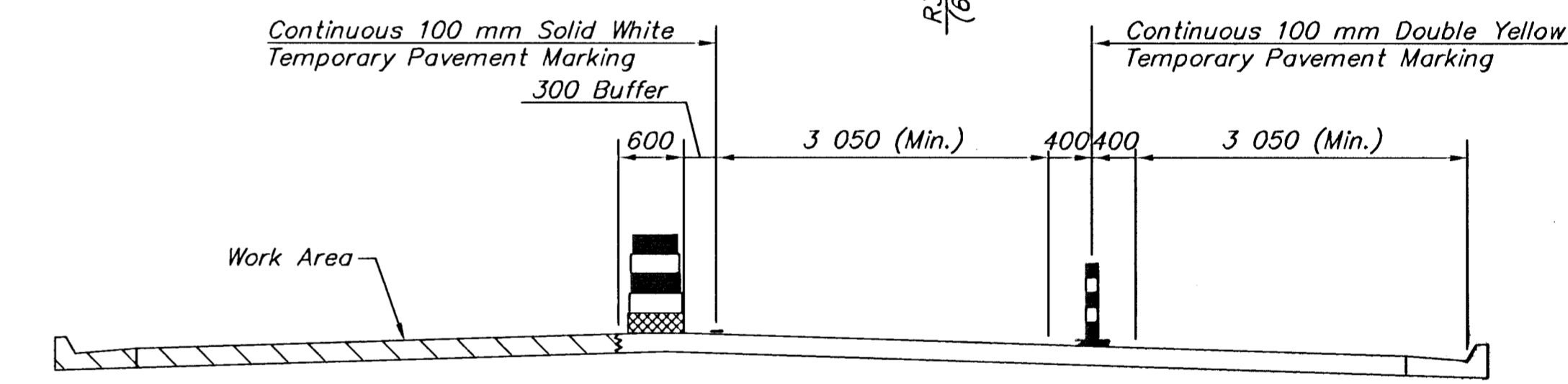
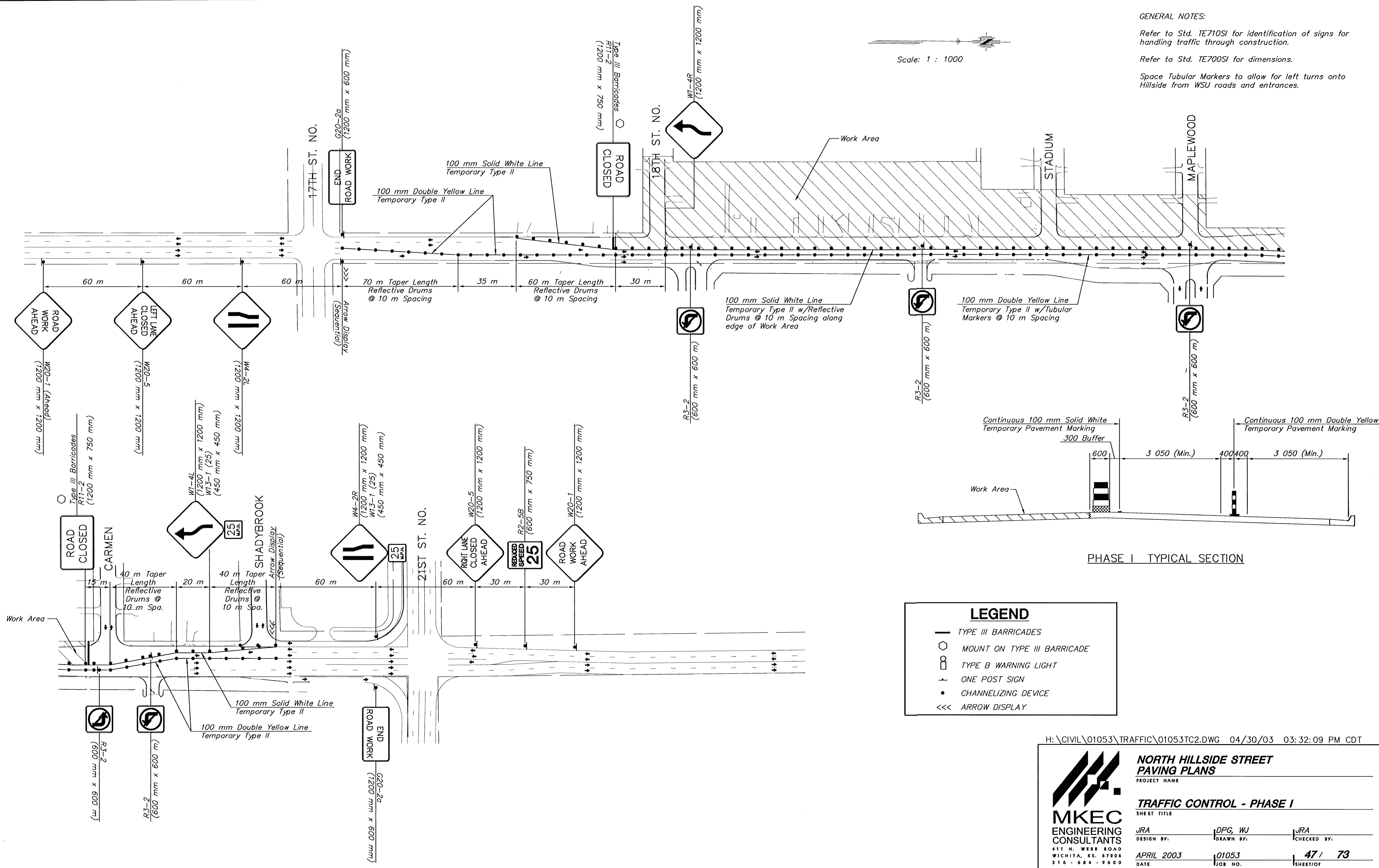
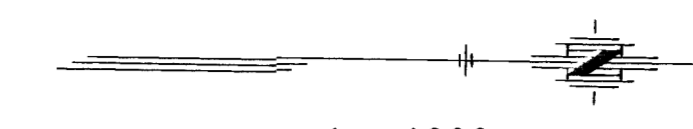
**GENERAL NOTES:**

Refer to Std. TE710SI for identification of signs for handling traffic through construction.

Refer to Std. TE700SI for dimensions.

Space Tubular Markers to allow for left turns onto Hillside from WSU roads and entrances.

Scale: 1 : 1000



PHASE I TYPICAL SECTION

**LEGEND**

- TYPE III BARRICADES
- MOUNT ON TYPE III BARRICADE
- TYPE B WARNING LIGHT
- ONE POST SIGN
- CHANNELIZING DEVICE
- <<< ARROW DISPLAY

H:\CIVIL\01053\TRAFFIC\01053TC2.DWG 04/30/03 03:32:09 PM CDT

<p><b>MKEC</b> ENGINEERING CONSULTANTS 411 N. WEBB ROAD WICHITA, KS. 67206 316-684-9600</p>	<p><b>NORTH HILLSIDE STREET PAVING PLANS</b> PROJECT NAME</p>		
	<p><b>TRAFFIC CONTROL - PHASE I</b> SHEET TITLE</p>		
	<p>JRA DESIGN BY:</p>	<p>DPG, WJ DRAWN BY:</p>	<p>JRA CHECKED BY:</p>
	<p>APRIL 2003 DATE</p>	<p>01053 JOB NO.</p>	<p>47 / 73 SHEET/OF</p>