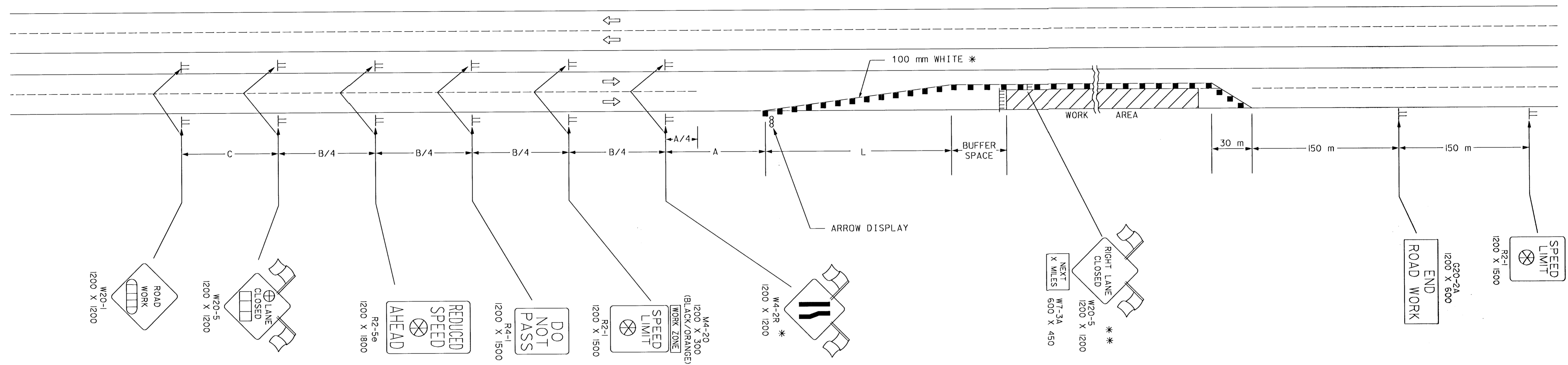


STATE	PROJECT NO.	YEAR	SHEET NO.	TOTAL SHEETS
KANSAS	472-83537	2003	54	73

REFER TO STD. TE7051 FOR ADDITIONAL INFORMATION ON TRAFFIC CONTROL SIGNS AND SIGN SPACING.  
REFER TO STD. TE7025 FOR INFORMATION ON TAPERS AND CHANNELIZING DEVICES.  
REFER TO STD. TE7005 FOR LENGTH OF BUFFER SPACE.



LEFT-SIDE SIGNS SHALL BE OMITTED FOR A FOUR-LANE UNDIVIDED HIGHWAY.

A TRAILER OR TRUCK WITH AN ARROW DISPLAY MAY BE USED DURING DAYTIME IN PLACE OF THE ARROW DISPLAY. THE TRUCK SHOULD BE LOCATED BETWEEN THE BUFFER SPACE AND THE WORK AREA.

\* FOR LEFT LANE CLOSURES USE W4-2L AND YELLOW EDGE LINE ALONG CHANNELIZING DEVICES.

\*\* THE W20-5 (RIGHT LANE CLOSED) AND W7-3A (NEXT X MILES) SIGNS SHOULD BE PLACED AT 3.2 KILOMETER INCREMENTS ON A PROJECT OF 6.4 KILOMETERS OR LONGER.

- Channelizing Devices
- ||| Type III Barricades
- ▤ AHEAD, 1500 FT Or 1 MILE
- ⊗ Speed To Be Determined By The Engineer
- ▤ AHEAD, 1000 FT, 1500 FT Or 1/2 MILE
- ⊕ RIGHT OR LEFT
- X Length To The Nearest Whole Mile

Plotted By : mark  
Thecher Blg., 4th Floor  
Plot File : H:\CIVIL\01053\06\NET\T744SI.DGN  
Plot Date : 04/30/03

3				
2				
1	9-26-02	REMOVED G20-1 SIGNS, ADDED W20-5 AND W7-3A	M.J.H.	S.A.B.
NO.	DATE	REVISIONS	BY	APP'D

KANSAS DEPARTMENT OF TRANSPORTATION  
TYPICAL TRAFFIC CONTROL  
FOUR-LANE HIGHWAY  
ONE LANE CLOSED

TE744SI		54	
DESIGNED	L.E.P.	APP'D	Michael P. McKenna
DETAIL CK.	DETAIL CK.	QUANTITIES	TRACED
DESIGN CK.	DETAIL CK.	QUAN. CK.	TRACE CK.