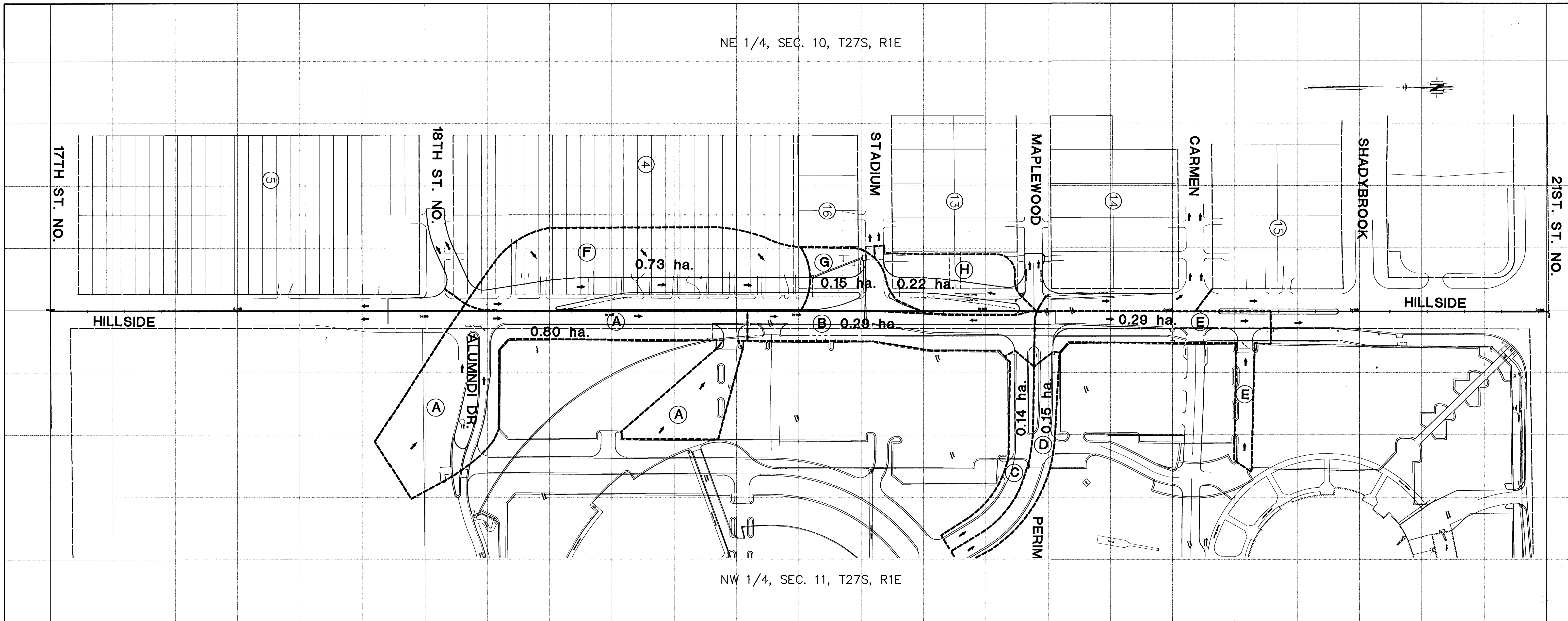


NE 1/4, SEC. 10, T27S, R1E



NW 1/4, SEC. 11, T27S, R1E

DRAINAGE ANALYSIS SUMMARY - HILLSIDE FROM 18TH ST. NORTH TO SHADYBROOK

Area ID	Area ha	C10	C100	Elev Max	Elev Min	Flow Length	Tc10 Calc	Tc100 Calc	Tc10 min	Tc100 min	I10 cm/hr	I100 cm/hr	Q10 cms	Q100 cms	Structure Location	Pipe (Q10)		
																Inlet Size m	Pipe Size m2	Min Slope %
A	0.75	0.41	0.42	60.732	53.61	267	14.63	14.42	15	15	13.26	18.72	0.11	0.16				
B	1.51	0.50	0.51	54.329	53.15	96	9.88	9.72	15	15	13.26	18.72	0.28	0.40				
C	0.30	0.68	0.70	57.303	54.140	125	6.20	5.91	15	15	13.26	18.72	0.07	0.11	Exist. Struc.		0.45	2.340
D	3.05	0.63	0.65	57.303	54.140	125	6.94	6.65	15	15	13.26	18.72	0.70	1.02				
E	0.91	0.23	0.23	54.329	51.38	124	13.06	13.06	15	15	13.26	18.72	0.08	0.11				
F	18.24	0.30	0.31	58.34	52.711	174	12.84	12.68	15	15	13.26	18.72	2.00	2.92				
G	0.64	0.30	0.31	53.36	52.278	30	5.14	5.08	15	15	13.26	18.72	0.07	0.10	20+410.300	1.5	375 mm	0.500
H	0.15	0.68	0.70	54.329	52.135	100	5.82	5.54	15	15	13.26	18.72	0.04	0.05	4+972.700 (Stad.)	3.0		

H:\CIVIL\01053\SUR\01053DRG.DWG 05/01/03 08:41:01 AM CDT

DRAINAGE MAP

STA. 0+000 TO STA. 0+800

PROJECT 472-83537 COUNTY SEDGWICK CO.
 SHEET NO. 57 OF 73 SCALE 1:1000 OR mm=1 km
 MAPPED BY DPG DATE 2-21-03 DETAILED BY _____
 CHECKED BY _____ APPROVED BY _____ DATE _____