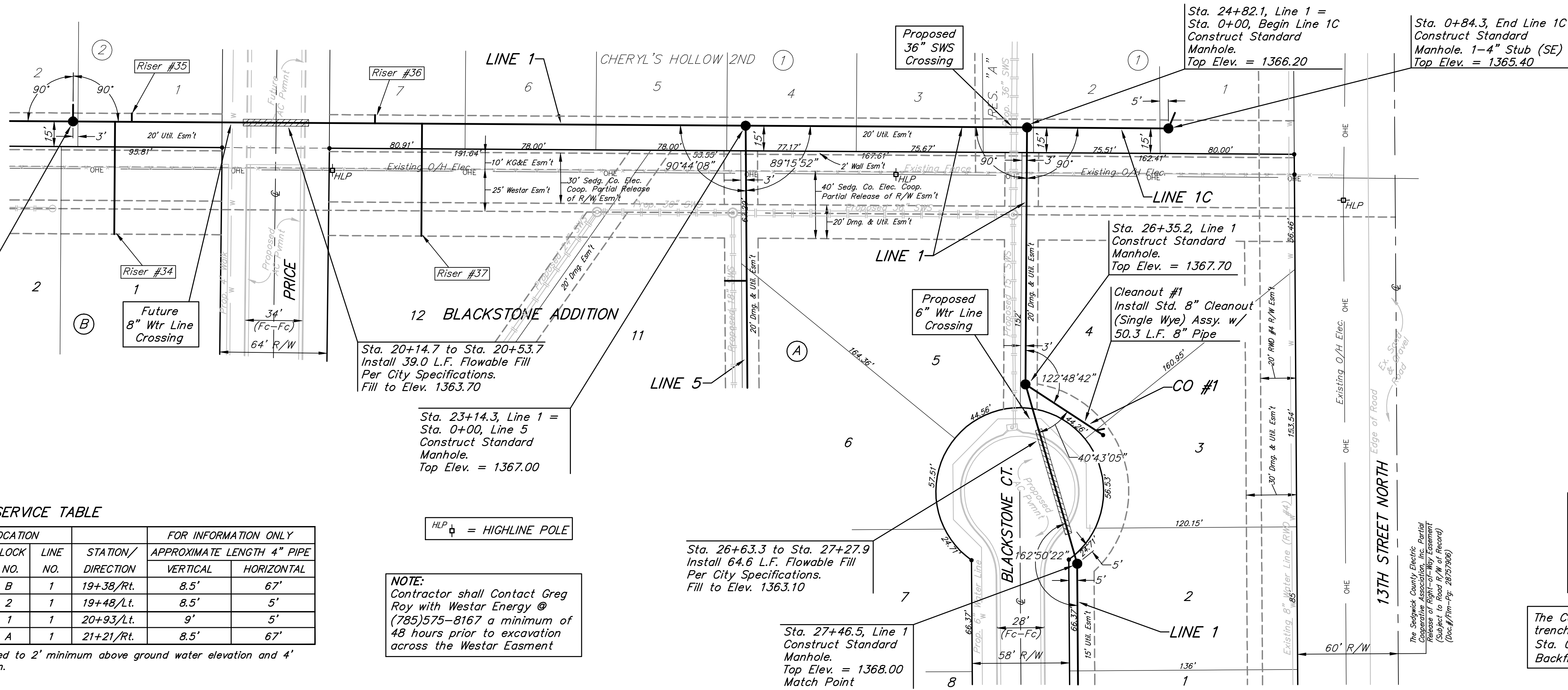


BENCHMARKS:
 City of Wichita Disc at Southwest Corner of 135th St. W. & 13th St. N
 30.00'± S. of \odot
 35.00'± W. of \odot
 Elev. = 1355.65 NGVD29

Small Railroad Spike in 2nd HLP W. of 135th St. W. on South Side of 13th St. N., (N. Face of HLP).
 Elev. = 1359.50 NGVD29

Small Railroad Spike in 4th HLP W. of 135th St. W. on South Side of 13th St. N., (N. Face of HLP).
 Elev. = 1366.64 NGVD29

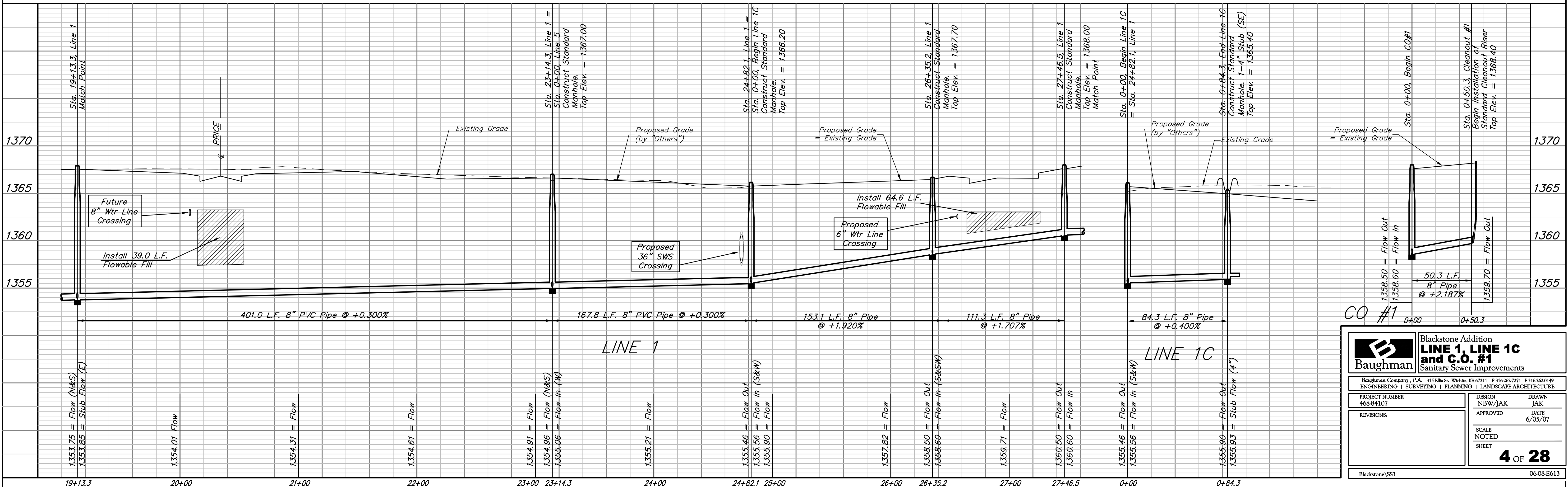
SCALE:
 1" = 40' HORIZONTAL
 1" = 5' VERTICAL
 • = IRON



SEWER SERVICE TABLE

NUMBER	TYPE	LOCATION			FOR INFORMATION ONLY	
		LOT NO.	BLOCK NO.	LINE NO.	STATION/DIRECTION	APPROXIMATE LENGTH 4" PIPE
34	8" X 4" Tee	1	B	1	19+38/Rt.	8.5' 67'
35	8" X 4" Tee	1	2	1	19+48/Lt.	8.5' 5'
36	8" X 4" Tee	7	1	1	20+93/Lt.	9' 5'
37	8" X 4" Tee	12	A	1	21+21/Rt.	8.5' 67'

NOTE: Vertical Riser Pipe shall be extended to 2' minimum above ground water elevation and 4' maximum below proposed ground elevation.



Baughman Blackstone Addition
LINE 1, LINE 1C and C.O. #1
 Sanitary Sewer Improvements

Baughman Company, P.A. 315 Ellis St. Wichita, KS 67211 P 316-262-7271 F 316-262-0149
 ENGINEERING | SURVEYING | PLANNING | LANDSCAPE ARCHITECTURE

PROJECT NUMBER: 468-84107
 DESIGN: NBW/JAK
 DRAWN: JAK
 APPROVED: [Signature]
 DATE: 6/05/07

REVISIONS:
 SCALE: NOTED
 SHEET: **4 OF 28**

Blackstone/SS3 06-08-E613