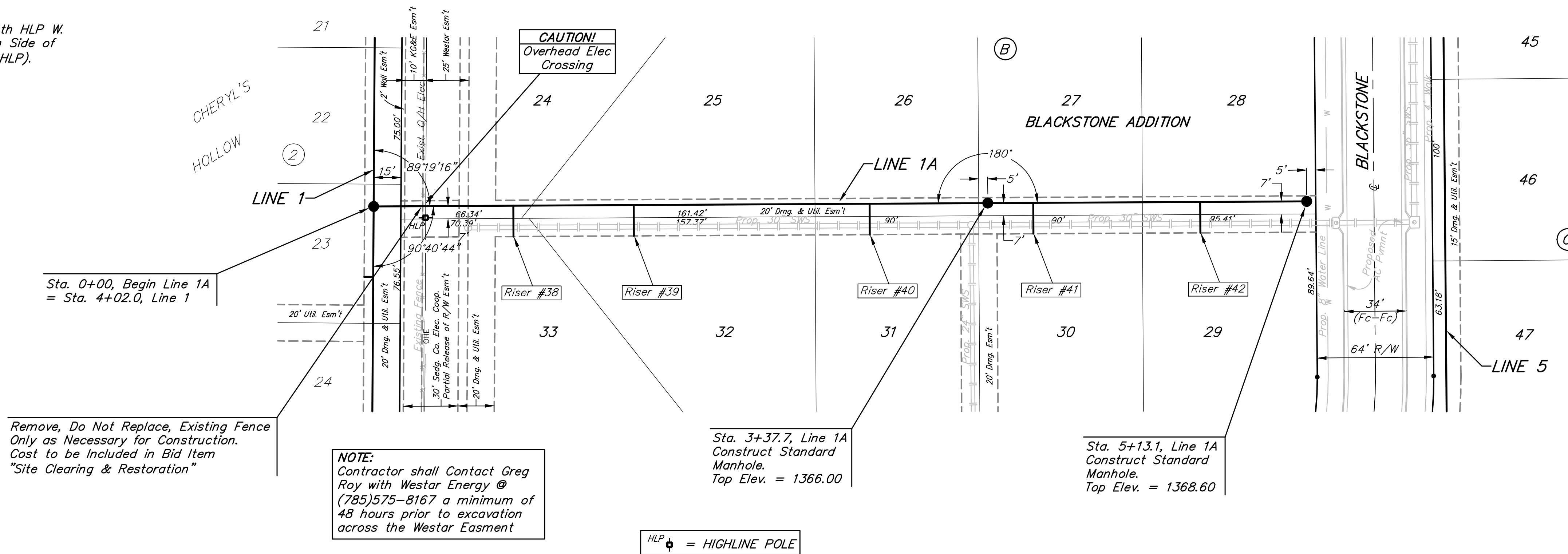


BENCHMARKS:
 City of Wichita Disc at Southwest
 Corner of 135th St. W. & 13th St. N
 30.00'± S. of \odot
 35.00'± W. of \odot
 Elev. = 1355.65 NGVD29

Small Railroad Spike in 2nd HLP W.
 of 135th St. W. on South Side of
 13th St. N., (N. Face of HLP).
 Elev. = 1359.50 NGVD29

Small Railroad Spike in 4th HLP W.
 of 135th St. W. on South Side of
 13th St. N., (N. Face of HLP).
 Elev. = 1366.64 NGVD29

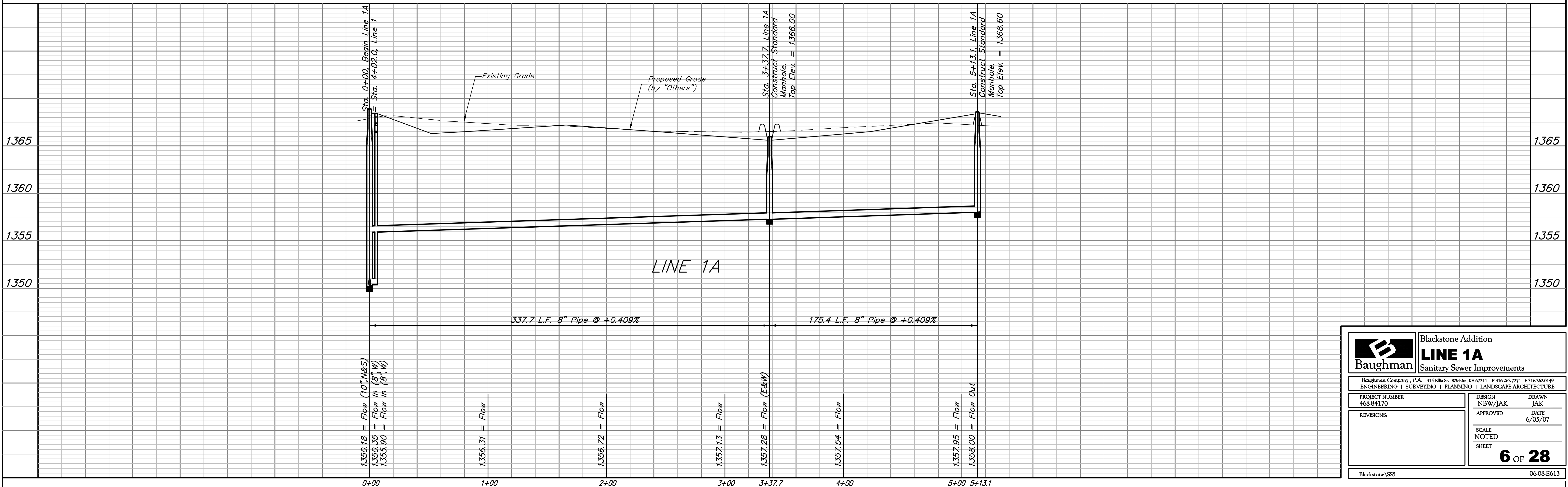
SCALE:
 1" = 40' HORIZONTAL
 1" = 5' VERTICAL
 • = IRON



SEWER SERVICE TABLE

NUMBER	TYPE	LOCATION				FOR INFORMATION ONLY	
		LOT NO.	BLOCK NO.	LINE NO.	STATION/DIRECTION	APPROXIMATE LENGTH 4" PIPE	
						VERTICAL	HORIZONTAL
38	8" X 4" Tee	33	B	1A	0+76/Rt.	5.5'	17'
39	8" X 4" Tee	32	B	1A	1+43/Rt.	5.5'	17'
40	8" X 4" Tee	31	B	1A	2+73/Rt.	4'	17'
41	8" X 4" Tee	30	B	1A	3+62/Rt.	3.5'	17'
42	8" X 4" Tee	29	B	1A	4+54/Rt.	4.5'	17'

NOTE: Vertical Riser Pipe shall be extended to 2' minimum above ground water elevation and 4' maximum below proposed ground elevation.



Baughman Blackstone Addition
LINE 1A
 Sanitary Sewer Improvements

PROJECT NUMBER: 468-84170
 DESIGN: NBW/JAK
 DRAWN: JAK
 APPROVED: DATE: 6/05/07

REVISIONS:

SCALE NOTED SHEET: **6 OF 28**

Blackstone\SSS 06-08-E613