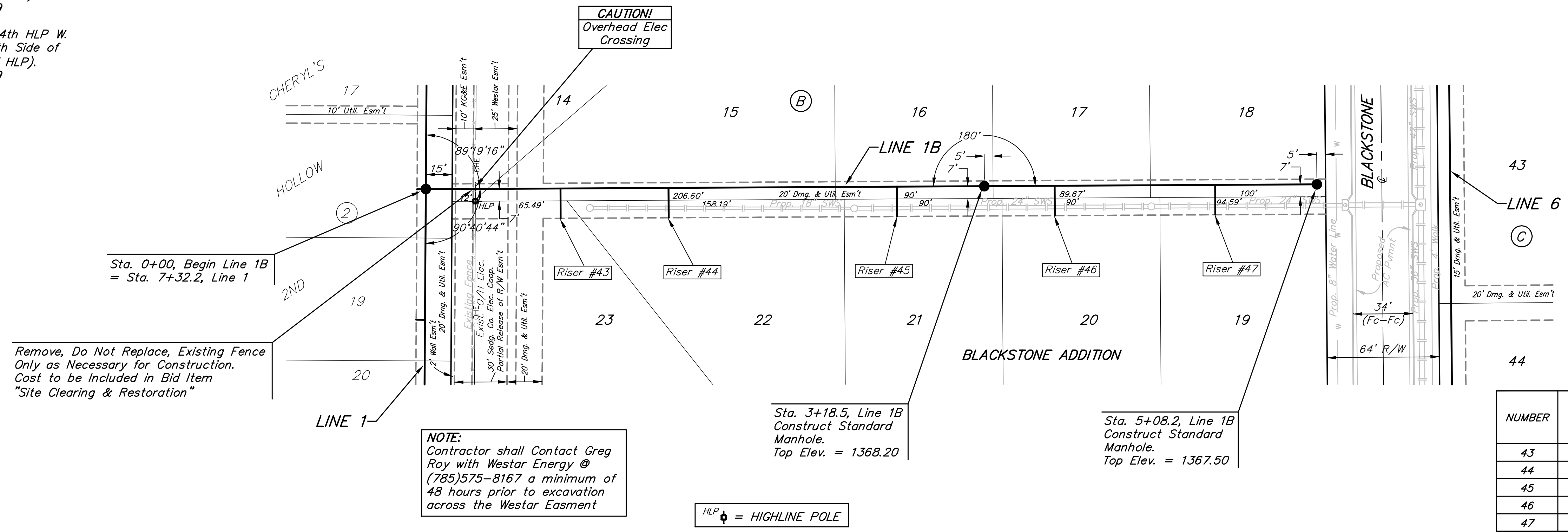


BENCHMARKS:
 City of Wichita Disc at Southwest
 Corner of 135th St. W. & 13th St. N
 30.00'± S. of ϕ
 35.00'± W. of ϕ
 Elev. = 1355.65 NGVD29

Small Railroad Spike in 2nd HLP W.
 of 135th St. W. on South Side of
 13th St. N., (N. Face of HLP).
 Elev. = 1359.50 NGVD29

Small Railroad Spike in 4th HLP W.
 of 135th St. W. on South Side of
 13th St. N., (N. Face of HLP).
 Elev. = 1366.64 NGVD29

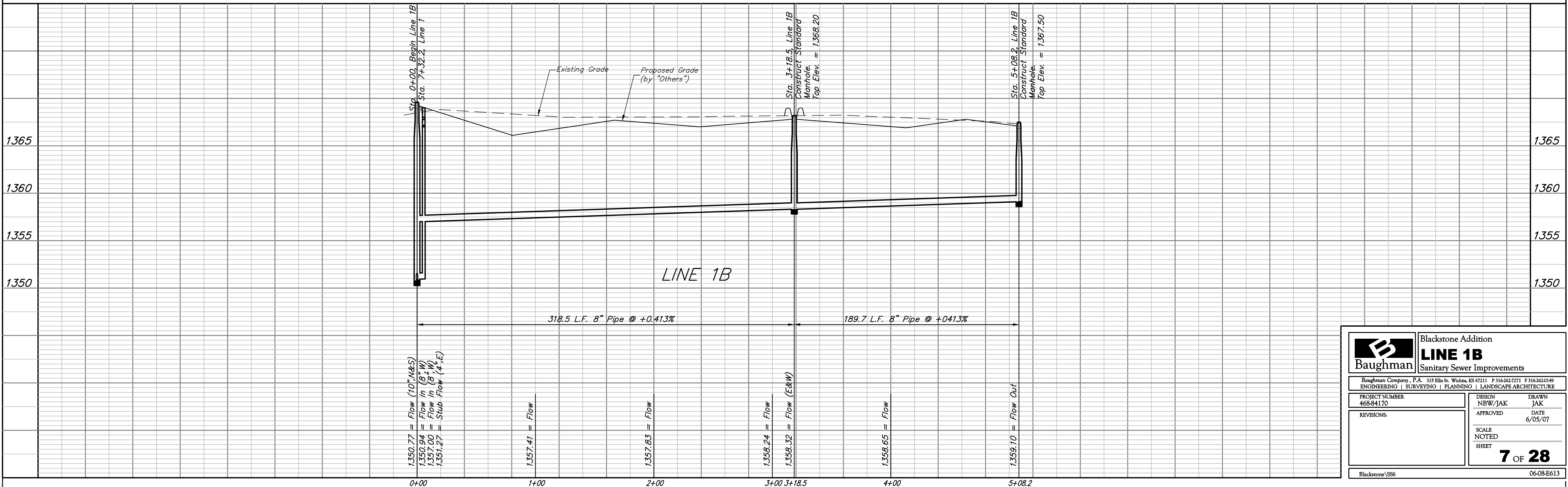
SCALE:
 1" = 40' HORIZONTAL
 1" = 5' VERTICAL
 • = IRON



SEWER SERVICE TABLE

NUMBER	TYPE	LOCATION			FOR INFORMATION ONLY	
		LOT NO.	BLOCK NO.	LINE NO.	STATION/DIRECTION	APPROXIMATE LENGTH 4" PIPE
					VERTICAL	HORIZONTAL
43	8" X 4" Tee	23	B	1B	0+66/Rt.	3' 17"
44	8" X 4" Tee	22	B	1B	1+28/Rt.	3.5' 17"
45	8" X 4" Tee	21	B	1B	2+59/Rt.	3' 17"
46	8" X 4" Tee	20	B	1B	3+48/Rt.	3' 17"
47	8" X 4" Tee	19	B	1B	4+40/Rt.	2.5' 17"

NOTE: Vertical Riser Pipe shall be extended to 2' minimum above ground water elevation and 4' maximum below proposed ground elevation.



		Blackstone Addition	
		LINE 1B	
Sanitary Sewer Improvements		Baughman Company, P.A. 315 Ellis St. Wichita, KS 67211 P 316-363-7271 F 316-363-0149 ENGINEERING SURVEYING PLANNING LANDSCAPE ARCHITECTURE	
PROJECT NUMBER 468-84170	DESIGN NBW/JAK	DRAWN JAK	DATE 6/05/07
REVISIONS:	SCALE NOTED SHEET		
		7 OF 28	
Blackstone\SS6		0608-E613	