

BENCHMARKS:
 City of Wichita Disc at Southwest
 Corner of 135th St. W. & 13th St. N
 30.00'± S. of \odot
 35.00'± W. of \odot
 Elev. = 1355.65 NGVD29

Small Railroad Spike in 2nd HLP W.
 of 135th St. W. on South Side of
 13th St. N., (N. Face of HLP).
 Elev. = 1359.50 NGVD29

Small Railroad Spike in 4th HLP W.
 of 135th St. W. on South Side of
 13th St. N., (N. Face of HLP).
 Elev. = 1366.64 NGVD29

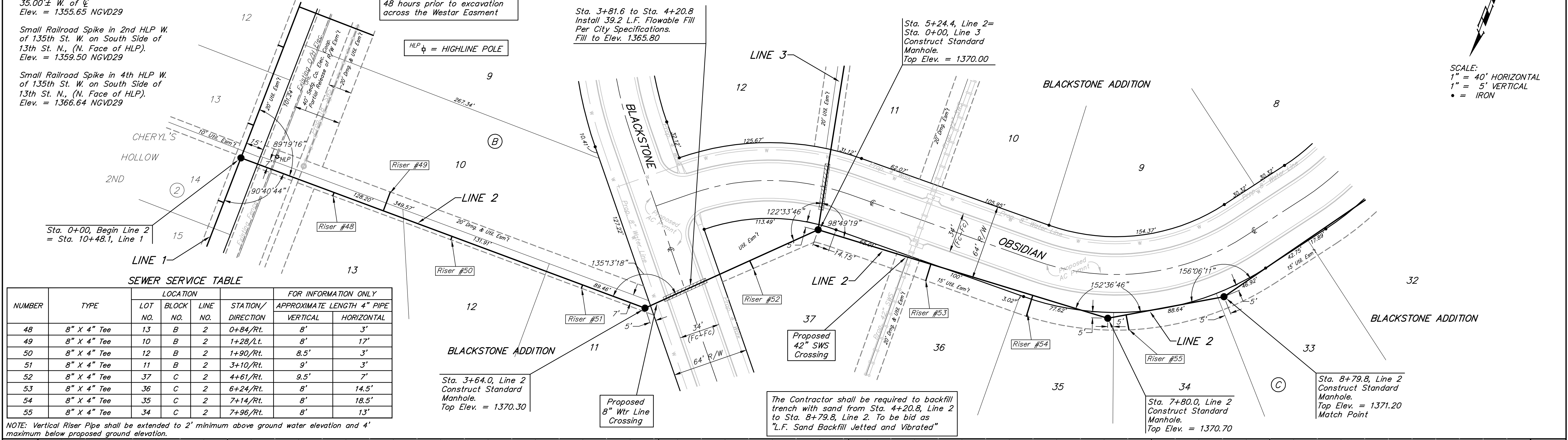
NOTE:
 Contractor shall Contact Greg
 Roy with Westar Energy @
 (785)575-8167 a minimum of
 48 hours prior to excavation
 across the Westar Easment

Sta. 3+81.6 to Sta. 4+20.8
 Install 39.2 L.F. Flowable Fill
 Per City Specifications.
 Fill to Elev. 1365.80

Sta. 5+24.4, Line 2=
 Sta. 0+00, Line 3
 Construct Standard
 Manhole.
 Top Elev. = 1370.00

Sta. 8+79.8, Line 2
 Construct Standard
 Manhole.
 Top Elev. = 1371.20
 Match Point

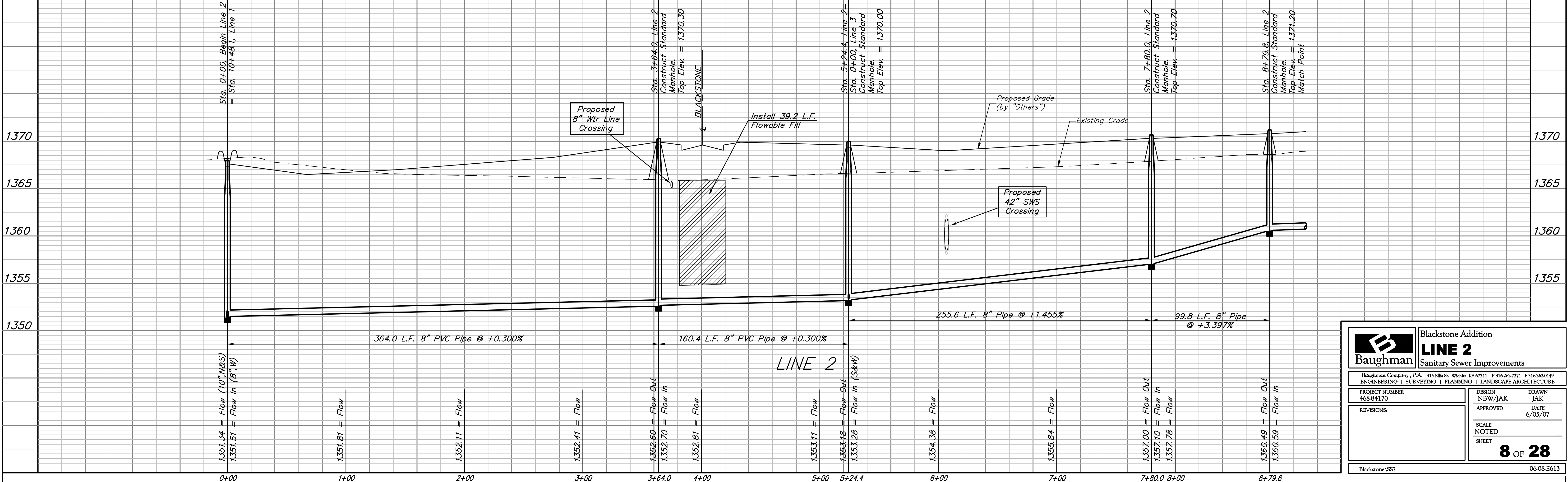
SCALE:
 1" = 40' HORIZONTAL
 1" = 5' VERTICAL
 • = IRON



SEWER SERVICE TABLE

NUMBER	TYPE	LOCATION			STATION/ DIRECTION	FOR INFORMATION ONLY	
		LOT NO.	BLOCK NO.	LINE NO.		APPROXIMATE LENGTH 4" PIPE	VERTICAL
48	8" X 4" Tee	13	B	2	0+84/Rt.	8'	3'
49	8" X 4" Tee	10	B	2	1+28/Lt.	8'	17'
50	8" X 4" Tee	12	B	2	1+90/Rt.	8.5'	3'
51	8" X 4" Tee	11	B	2	3+10/Rt.	9'	3'
52	8" X 4" Tee	37	C	2	4+61/Rt.	9.5'	7'
53	8" X 4" Tee	36	C	2	6+24/Rt.	8'	14.5'
54	8" X 4" Tee	35	C	2	7+14/Rt.	8'	18.5'
55	8" X 4" Tee	34	C	2	7+96/Rt.	8'	13'

NOTE: Vertical Riser Pipe shall be extended to 2' minimum above ground water elevation and 4' maximum below proposed ground elevation.



Baughman Blackstone Addition
LINE 2
 Sanitary Sewer Improvements

PROJECT NUMBER: 468-84170
 DESIGN: NBW/JAK
 DRAWN: JAK
 APPROVED: DATE 6/05/07
 SCALE: NOTED
 SHEET: **8 OF 28**

Blackstone/SS7 0608-E613