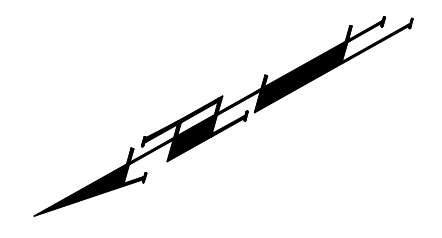


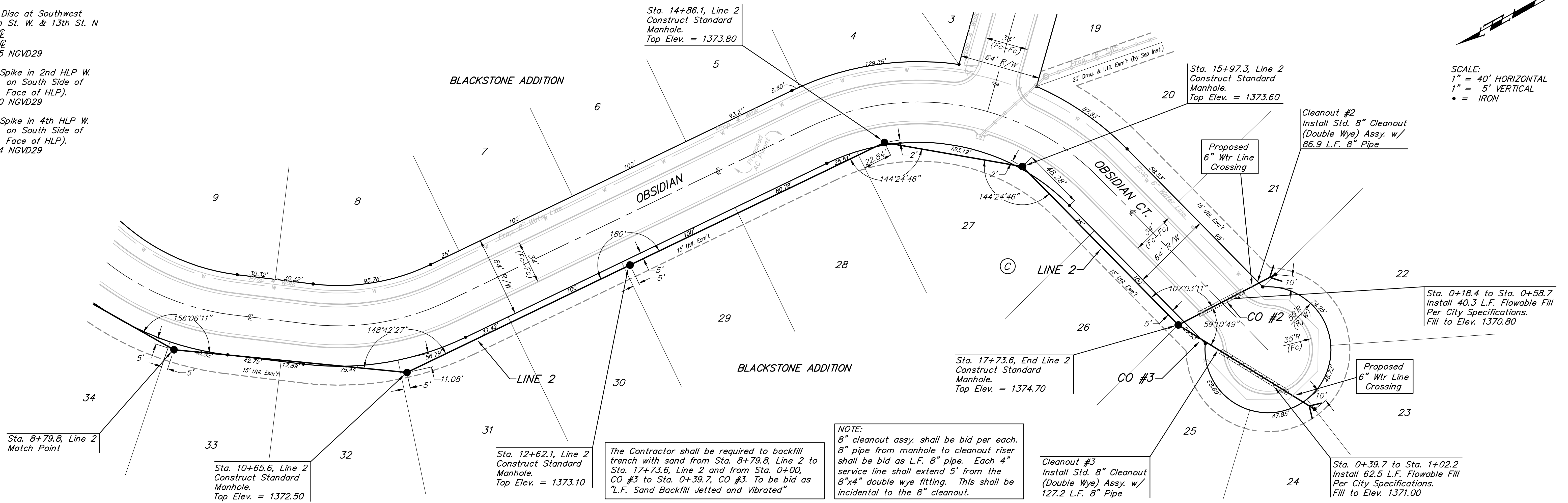
**BENCHMARKS:**  
 City of Wichita Disc at Southwest  
 Corner of 135th St. W. & 13th St. N  
 30.00'± S. of  $\odot$   
 35.00'± W. of  $\odot$   
 Elev. = 1355.65 NGVD29

Small Railroad Spike in 2nd HLP W.  
 of 135th St. W. on South Side of  
 13th St. N., (N. Face of HLP).  
 Elev. = 1359.50 NGVD29

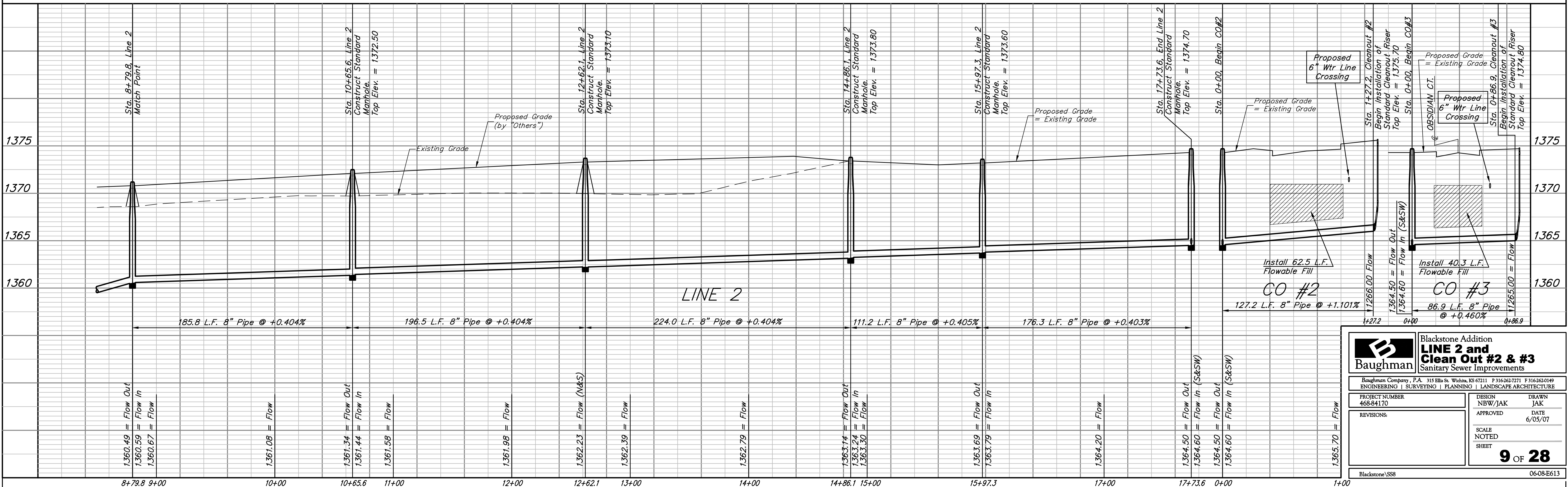
Small Railroad Spike in 4th HLP W.  
 of 135th St. W. on South Side of  
 13th St. N., (N. Face of HLP).  
 Elev. = 1366.64 NGVD29



SCALE:  
 1" = 40' HORIZONTAL  
 1" = 5' VERTICAL  
 • = IRON



**NOTE:**  
 8" cleanout assy. shall be bid per each.  
 8" pipe from manhole to cleanout riser  
 shall be bid as L.F. 8" pipe. Each 4"  
 service line shall extend 5' from the  
 8"x4" double wye fitting. This shall be  
 incidental to the 8" cleanout.



		<b>Blackstone Addition</b> <b>LINE 2 and</b> <b>Clean Out #2 &amp; #3</b> Sanitary Sewer Improvements	
Baughman Company, P.A. 315 Ellis St. Wichita, KS 67211 P 316-363-2271 F 316-363-0149 ENGINEERING   SURVEYING   PLANNING   LANDSCAPE ARCHITECTURE			
PROJECT NUMBER 468-84170	DESIGN NBW/JAK	DRAWN JAK	
REVISIONS:	APPROVED	DATE 6/05/07	
SCALE NOTED		SHEET <b>9 OF 28</b>	
Blackstone/SSS		0608-E613	