

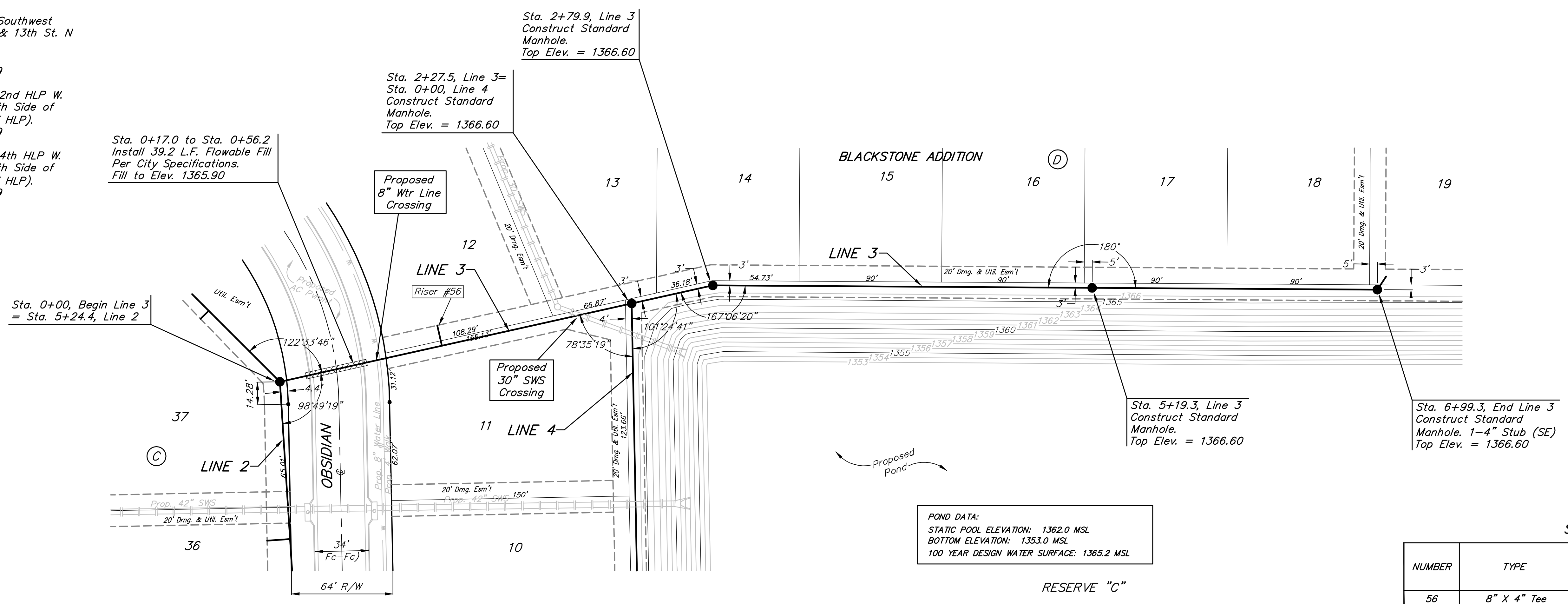
BENCHMARKS:
 City of Wichita Disc at Southwest
 Corner of 135th St. W. & 13th St. N
 30.00'± S. of \odot
 35.00'± W. of \odot
 Elev. = 1355.65 NGVD29

Small Railroad Spike in 2nd HLP W.
 of 135th St. W. on South Side of
 13th St. N., (N. Face of HLP).
 Elev. = 1359.50 NGVD29

Small Railroad Spike in 4th HLP W.
 of 135th St. W. on South Side of
 13th St. N., (N. Face of HLP).
 Elev. = 1366.64 NGVD29



SCALE:
 1" = 40' HORIZONTAL
 1" = 5' VERTICAL
 • = IRON

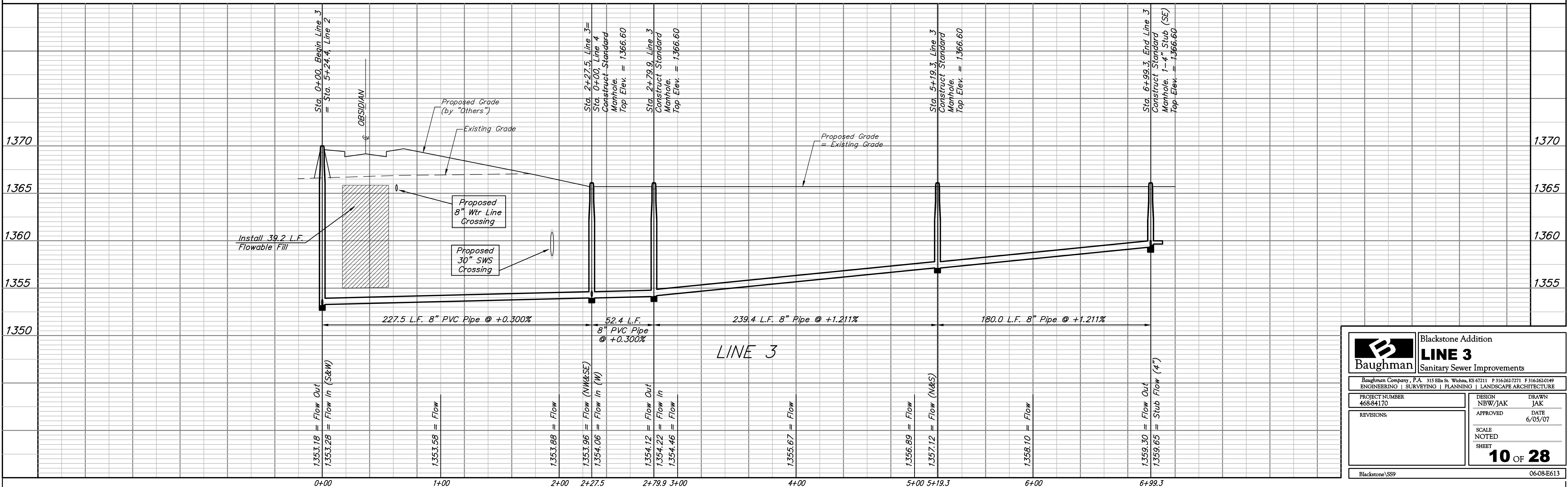


POND DATA:
 STATIC POOL ELEVATION: 1362.0 MSL
 BOTTOM ELEVATION: 1353.0 MSL
 100 YEAR DESIGN WATER SURFACE: 1365.2 MSL

SEWER SERVICE TABLE

NUMBER	TYPE	LOCATION			FOR INFORMATION ONLY	
		LOT NO.	BLOCK NO.	LINE NO.	STATION/DIRECTION	APPROXIMATE LENGTH 4" PIPE
56	8" X 4" Tee	12	D	3	1+05/Lt.	VERTICAL: 10' HORIZONTAL: 13'

NOTE: Vertical Riser Pipe shall be extended to 2' minimum above ground water elevation and 4' maximum below proposed ground elevation.



Baughman
 ENGINEERING | SURVEYING | PLANNING | LANDSCAPE ARCHITECTURE

Blackstone Addition
LINE 3
 Sanitary Sewer Improvements

PROJECT NUMBER 468-84170	DESIGN NBW/JAK	DRAWN JAK
REVISIONS:	APPROVED	DATE 6/05/07
SCALE NOTED		SHEET 10 OF 28

Blackstone/SS9
06-08-E613