

**BENCHMARKS:**  
 City of Wichita Disc at Southwest  
 Corner of 135th St. W. & 13th St. N  
 30.00'± S. of  $\odot$   
 35.00'± W. of  $\odot$   
 Elev. = 1355.65 NGVD29

Small Railroad Spike in 2nd HLP W.  
 of 135th St. W. on South Side of  
 13th St. N., (N. Face of HLP).  
 Elev. = 1359.50 NGVD29

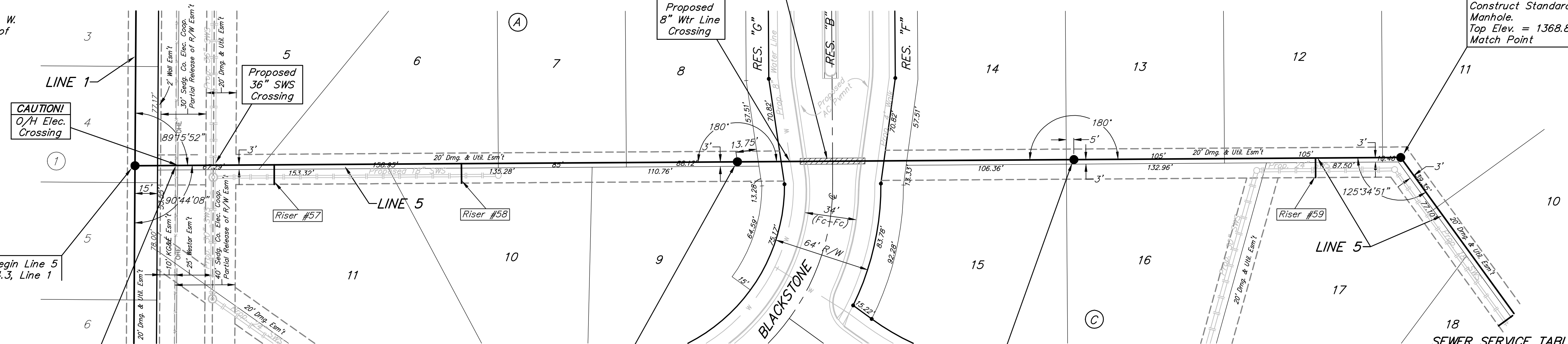
Small Railroad Spike in 4th HLP W.  
 of 135th St. W. on South Side of  
 13th St. N., (N. Face of HLP).  
 Elev. = 1366.64 NGVD29

Sta. 4+41.7 to Sta. 4+84.8  
 Install 43.1 L.F. Flowable Fill  
 Per City Specifications.  
 Fill to Elev. 1367.50

BLACKSTONE ADDITION

Sta. 8+40.4, Line 5  
 Construct Standard  
 Manhole.  
 Top Elev. = 1368.80  
 Match Point

SCALE:  
 1" = 40' HORIZONTAL  
 1" = 5' VERTICAL  
 • = IRON



Sta. 0+00, Begin Line 5  
 = Sta. 23+14.3, Line 1

Remove, Do Not Replace, Existing Fence  
 Only as Necessary for Construction.  
 Cost to be Included in Bid Item  
 "Site Clearing & Restoration"

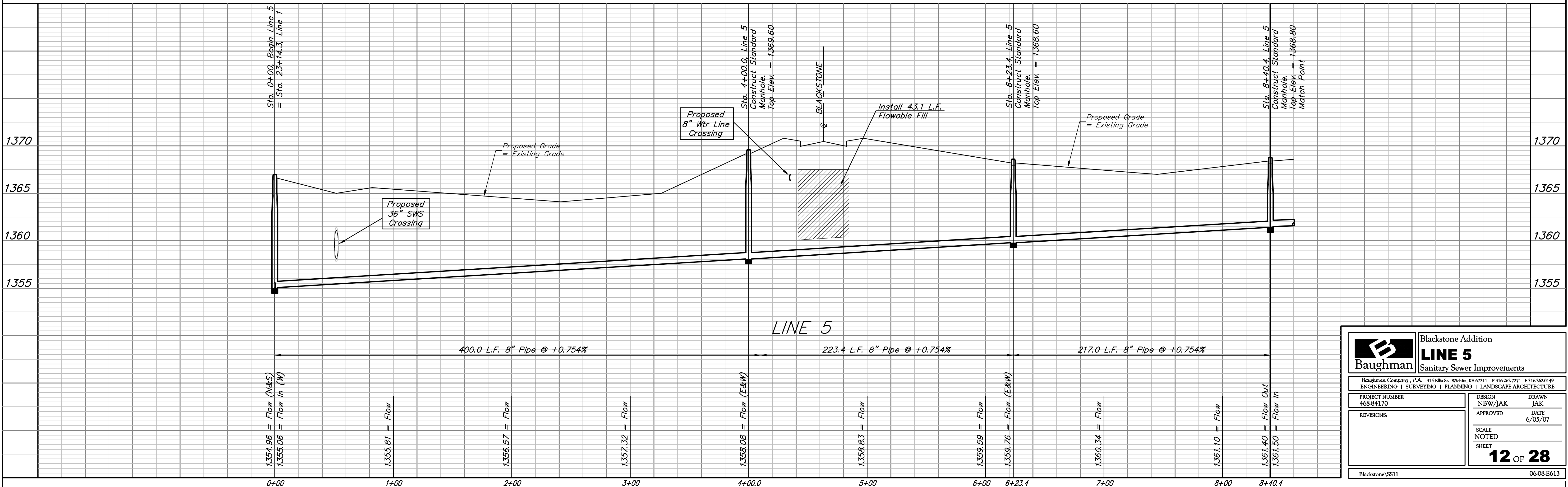
**NOTE:**  
 Contractor shall Contact Greg  
 Roy with Westar Energy @  
 (785)575-8167 a minimum of  
 48 hours prior to excavation  
 across the Westar Easement

Sta. 4+00.0, Line 5  
 Construct Standard  
 Manhole.  
 Top Elev. = 1369.60

Sta. 6+23.4, Line 5  
 Construct Standard  
 Manhole.  
 Top Elev. = 1368.60

NUMBER	TYPE	LOCATION			FOR INFORMATION ONLY	
		LOT NO.	BLOCK NO.	LINE NO.	STATION/DIRECTION	APPROXIMATE LENGTH 4" PIPE
57	8" X 4" Tee	11	A	5	0+93/Rt.	3'
58	8" X 4" Tee	10	A	5	2+17/Rt.	1.5'
59	8" X 4" Tee	17	C	5	7+84/Rt.	1.5'

**NOTE:** Vertical Riser Pipe shall be extended to 2' minimum above ground water elevation and 4' maximum below proposed ground elevation.



		Blackstone Addition	
		<b>LINE 5</b>	
Sanitary Sewer Improvements		Baughman Company, P.A. 315 Ellis St. Wichita, KS 67211 P 316-363-7271 F 316-363-0149	
PROJECT NUMBER 468-84170		DESIGN NBW/JAK	DRAWN JAK
REVISIONS:		APPROVED	DATE 6/05/07
		SCALE NOTED SHEET	
		<b>12 OF 28</b>	
Blackstone\SS1		06-08-E613	