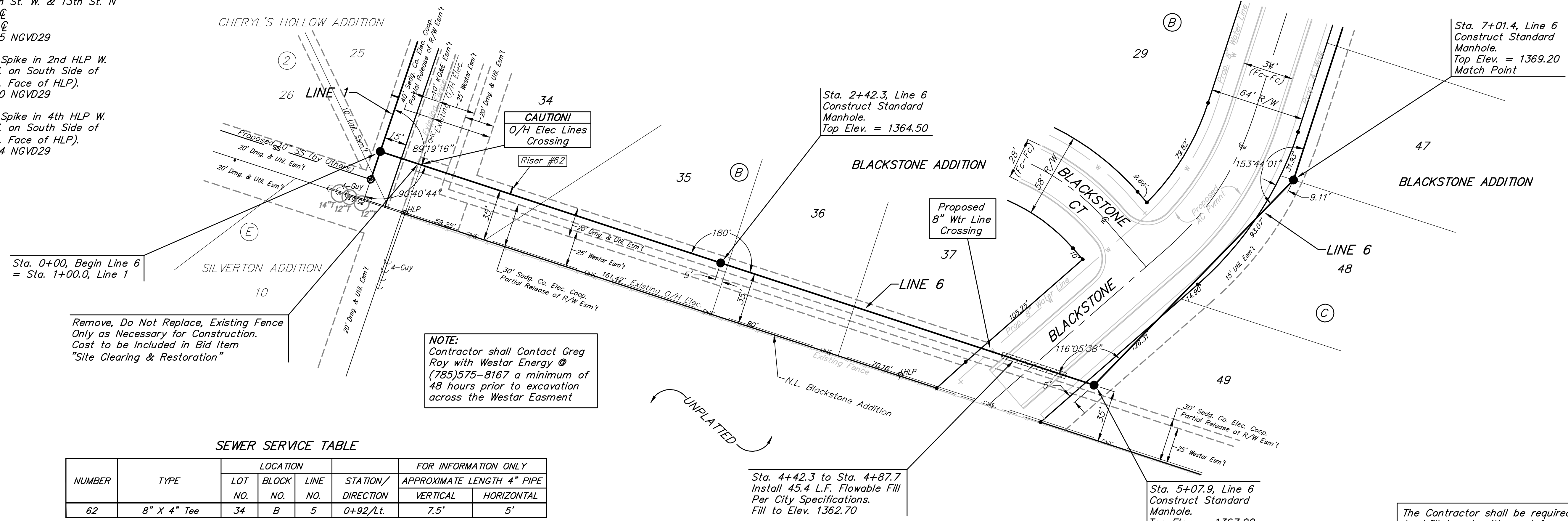


BENCHMARKS:
 City of Wichita Disc at Southwest
 Corner of 135th St. W. & 13th St. N
 30.00'± S. of \odot
 35.00'± W. of \odot
 Elev. = 1355.65 NGVD29

Small Railroad Spike in 2nd HLP W.
 of 135th St. W. on South Side of
 13th St. N., (N. Face of HLP).
 Elev. = 1359.50 NGVD29

Small Railroad Spike in 4th HLP W.
 of 135th St. W. on South Side of
 13th St. N., (N. Face of HLP).
 Elev. = 1366.64 NGVD29

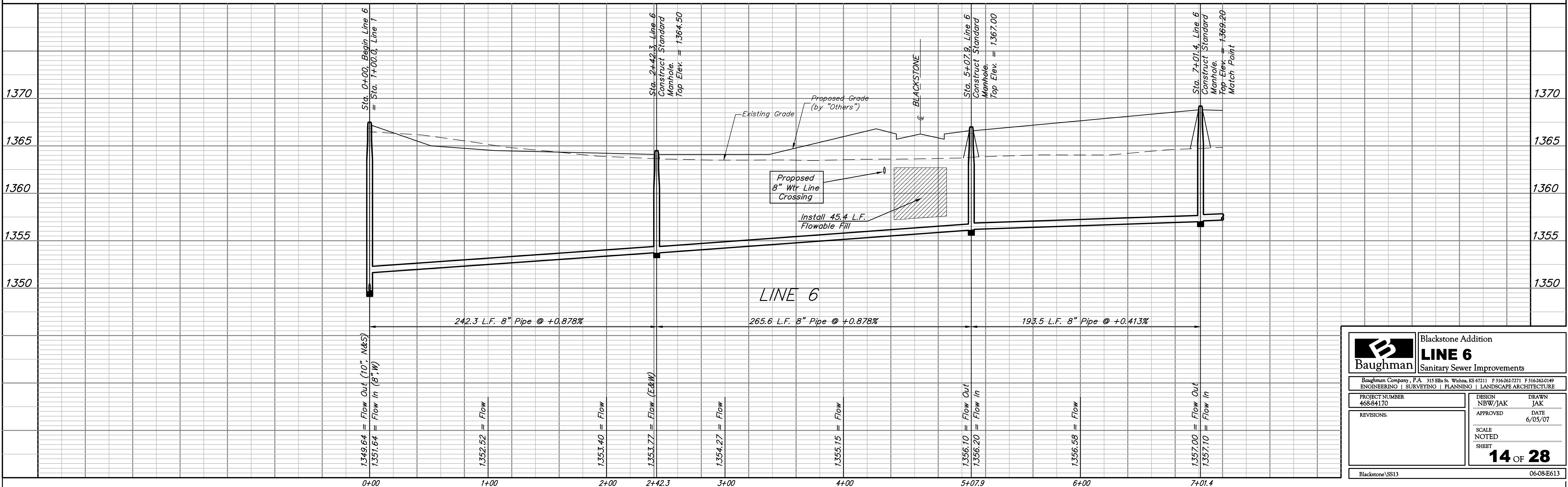


SCALE:
 1" = 40' HORIZONTAL
 1" = 5' VERTICAL
 • = IRON

SEWER SERVICE TABLE

| NUMBER | TYPE | LOCATION | | | STATION/ DIRECTION | FOR INFORMATION ONLY | |
|--------|-------------|------------|--------------|-------------|-----------------------|----------------------------|----------|
| | | LOT NO. | BLOCK NO. | LINE NO. | | APPROXIMATE LENGTH 4" PIPE | VERTICAL |
| 62 | 8" X 4" Tee | 34 | B | 5 | 0+92/Lt. | 7.5' | 5' |

NOTE: Vertical Riser Pipe shall be extended to 2' minimum above ground water elevation and 4' maximum below proposed ground elevation.



| | | | |
|-----------------------------|-------------------------|---|-----------------|
| | | Blackstone Addition | |
| | | LINE 6 | |
| Sanitary Sewer Improvements | | Baughman Company, P.A. 315 Ellis St. Wichita, KS 67211 P 316-363-7271 F 316-363-0149 ENGINEERING SURVEYING PLANNING LANDSCAPE ARCHITECTURE | |
| PROJECT NUMBER 468-84170 | DESIGN NBW/JAK | DRAWN JAK | DATE 6/05/07 |
| REVISIONS: | SCALE NOTED SHEET | | |
| | | 14 OF 28 | |
| Blackstone\SS13 | | 06-08-E613 | |