

# STREET PAVING FOR 58TH ST. NORTH

to serve

## NORTHGATE ADDITION - PHASE 1

- 58th St. N. and 58th Ct. N. (Lots 29-39, Block A) from the West Line of Lot 4, Block C, East and North to and including the cul-de-sac
- 58th St. N. from the West Line of Lot 28, Block A, East and South to the East Line of the Plat Edwards from near the South Line of Lot 18, Block D, North to 58th St. N.
- 58th Ct. N. (Lots 1 & 15-24, Block A) from 58th St. N., North to and including the cul-de-sac
- 58th Ct. N. (Lots 2-14, Block A) from 58th Ct. N. (Lots 1 & 15-24, Block A), East and North to and including the cul-de-sac
- 58th Ct. N. (Lots 7-16, Block D) from the cul-de-sac, North to 58th St. N.
- 58th Ct. N. (Lots 1-6, Block D) from the cul-de-sac, North to 58th St. N.

### CITY OF WICHITA, KANSAS

James L. Armor, P.E. City Engineer

Project Number

472-84465

O.C.A. Number

766125

### GENERAL NOTES:

- Contractor will be required to provide notice to utility companies a minimum of forty-eight (48) hours prior to any excavation, as follows:  

Kansas One-Call	687-2470
-----------------	----------

The Contractor must notify the following in case of an emergency:

Cox Communications	262-4270
Kansas Gas Service	1-888-482-4950
Westar Energy	383-8650
Aquila Energy	1-800-303-0357
SBC	268-2245
City of Wichita Water Dept.	268-4563
City of Wichita Sewer Maint.	268-4024
City of Wichita Storm Sewer Maint.	268-4090
City of Wichita Traffic Maint.	268-4034
Conoco Phillips Pipeline Co.	1-877-267-2290
Southern Star Pipeline Co.	529-6600
Kinder-Morgan Pipeline Co.	1-888-844-5658
Enbridge Pipelines	(913) 764-6015
- Utility service lines, poles, valve boxes, meters, and etcetera are to be adjusted as necessary by others prior to construction unless the plans specifically call for their adjustment by the Contractor or unless the plans specifically identify a utility to be adjusted by its owner during construction. Existing utilities and their location, as shown on the plans, represent the best information obtainable for design. The Contractor will be required to work around existing utilities within the right-of-way which do not conflict with proposed construction. The contractor shall coordinate all crossings and construction near existing utilities with the owner of that utility. (Electric - Westar Energy, CATV - Cox Communications, Gas - Aquila, and Phone - AT&T)
- Rubble from the removal of miscellaneous structures and excess excavation which is to be wasted shall be disposed of on sites to be provided by the Contractor. These sites shall be approved by the Engineer as to suitability, appearance and site location. Locations, in the opinion of the Engineer, that will leave an unsightly appearance will not be approved. All disposal sites must be approved by the Kansas Department of Health and Environment. Material either stockpiled or disposed of in a flood plain would require a Kansas State Board of Agriculture permit. Any material dumped in waters of the United States or wetlands is subject to U.S. Corps of Engineers permitting regulations. Any material buried or stockpiled beyond approved construction limits would require additional archaeological investigations unless buried in a previously approved borrow location.
- Unless specifically noted on plans, trees and shrubs in public right-of-way which are in direct conflict with proposed new construction shall be removed by the Contractor ONLY with the Developer or Baughman Company approval. Trees and shrubs which are not in direct conflict with proposed new construction shall be saved and protected from damage.
- The Contractor shall give all property owners and/or tenants of developed property abutting the construction of this project a minimum of ten (10) days notice prior to start of construction.
- The Contractor shall be responsible for preserving property irons. The Contractor will be required to re-establish any property irons which are damaged or destroyed by his construction operations. Such irons shall be re-established by a licensed land surveyor in accordance with state laws
- All existing and proposed erosion control measures including silt fencing, erosion control mat, straw bales, inlet barriers, and const. entrance shall be maintained throughout construction by the contractor and until project is accepted by the City of Wichita. The on-site engineer shall complete weekly reports on the status of erosion control measures. The contractor shall be required to comply with maintenance and/or replacement of erosion control measures as determined by the on-site engineer until project is accepted by City of Wichita.
- All excess excavation shall remain on-site and shall be stockpiled or spread at a location determined by the engineer.
- The contractor shall adjust valve boxes as necessary to match proposed grade. Cost to be included in bid item, "Site Clearing & Restoration."
- A saw cut of at least one-half the depth of existing surface courses or one-fourth the depth of the existing total pavement thickness shall be provided at locations where proposed construction abuts the existing surface course or pavement for which partial removal of that surface or pavement is required. Sawed joint to facilitate removal within three (3) feet of existing joints will not be permitted and for such instances the limits of removal shall extend to the existing joint. Such saw cuts will not be paid for directly and this cost shall be considered as subsidiary to the removal of the surface or pavement.
- Limits of earthwork shall match existing ground elevations at the right-of-way line unless otherwise noted on the plans or shown on earthwork cross-sections with a new finished grade elevation. When a new finished grade elevation is shown, the earthwork shall extend one foot beyond the right-of-way line and then slope up or down using permissible slopes to match the existing ground surface.
- All areas disturbed during construction shall be seeded at 300 lbs./acre with Rye Grass immediately following construction in that area. Contractor shall prepare ground per City Specifications.
- The Contractor shall drain any standing water in sump areas of the proposed pavement. Contractor shall overexcavate and recompact these areas as required to maintain compaction of 95% Standard Proctor Density. Cost to be incidental to pavement.
- The developer for this project is Jay Russell, (316) 722-2417
- Mass Grading to be completed prior to construction as shown on cross-sections to within 0.2'. Contractor shall satisfy himself with the earthwork quantities as bid for excavation and compacted fill prior to bidding. No additional payments or change orders for Earthwork will be accepted.
- Contractor shall remove existing Reinforced Concrete Valley-Gutter pavement and Field entrance near Lot 5, Block A, and replace with full height curb & gutter to match existing. Regrade area as necessary. See Sheet 29.
- Contractor shall contact Baughman Company for Street Sign Numbers prior to ordering Signs. Street Signs will not be accepted without proper numbers.

### Benchmarks

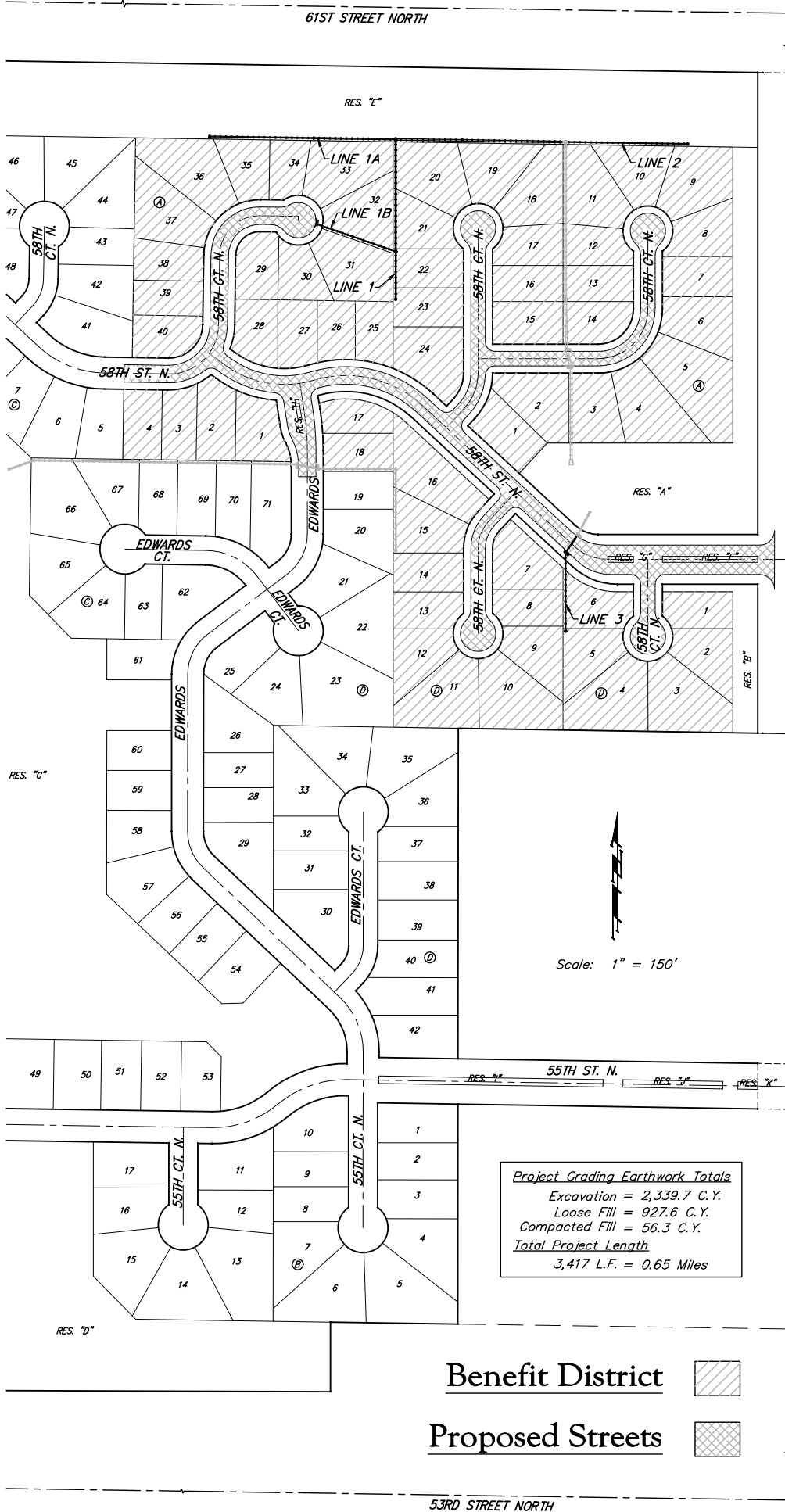
BM #1: BENT 60d NAIL IN LIGHT POLE, 55' SSW. OF THE E1/4 COR., SEC. 13, TWP. 26-S, R-1-W. ELEV. = 1336.54 NGVD29

BM #2: RAILROAD SPIKE IN E. FACE OF N. "H" POLE, 60± S. OF N. LINE, S1/2, NE1/4, SEC. 13, TWP. 26-S, R-1-W. ELEV. = 1335.93 NGVD29

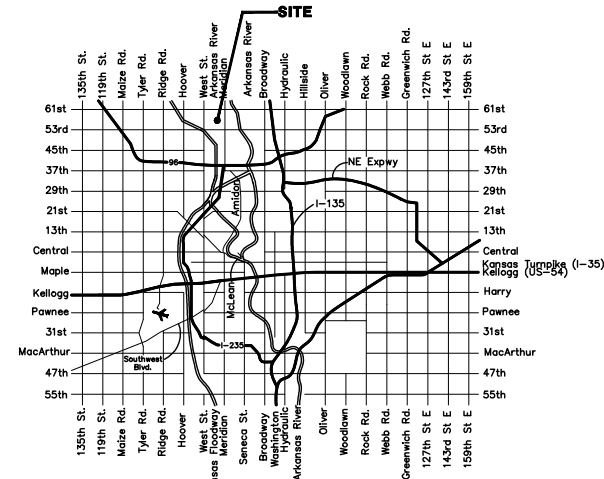
BM #3: "□" CUT ON TOP OF NE COR. OF WATER VAULT, 437± E. & 54± N. OF S1/4 COR., SEC. 13, TWP. 26-S, R-1-W. ELEV. = 1334.81 NGVD29

### Sheet Index

Title Sheet	1
35' Pavement Detail	2
29' Pavement Detail	3
Sign Details	4
Miscellaneous Details	5
Entrance Details	6
58th St N and 58th Ct N	7-8
58th St. N.	9-11
Edwards	12
58th Ct N (Lots 1&15-24, Block A)	13
58th Ct N (Lots 2-14, Block A)	14-15
58th Ct N (Lots 7-16, Block A)	16
58th Ct N (Lots 1-6, Block A)	17
SWS Line 1	18-19
SWS Line 1A	20
SWS Line 1B	21
SWS Line 2	22
SWS Line 3	23
Standard Drop Inlet Detail	24
Shallow Manhole Detail	25
Ring & Cover Detail	26
Special Yard Inlet Detail	27
Std. Type 1A Double Curb Inlet Dtl.	28
Std. Type 1A Single Curb Inlet Dtl.	29
Erosion Control Plan	30
Erosion Control Details	31-34
Earthwork Cross-Sections	35-46
Coordinate Sheet	47-48
Copy of Plat	49




**Project Grading Earthwork Totals**  
 Excavation = 2,339.7 C.Y.  
 Loose Fill = 927.6 C.Y.  
 Compacted Fill = 56.3 C.Y.  
**Total Project Length**  
 3,417 L.F. = 0.65 Miles



### Vicinity Map

**May 2007**



Baughman Company, P.A. 315 Ellis St. Wichita, KS 67211 P 316-262-7271 F 316-262-0149  
 ENGINEERING | SURVEYING | PLANNING | LANDSCAPE ARCHITECTURE