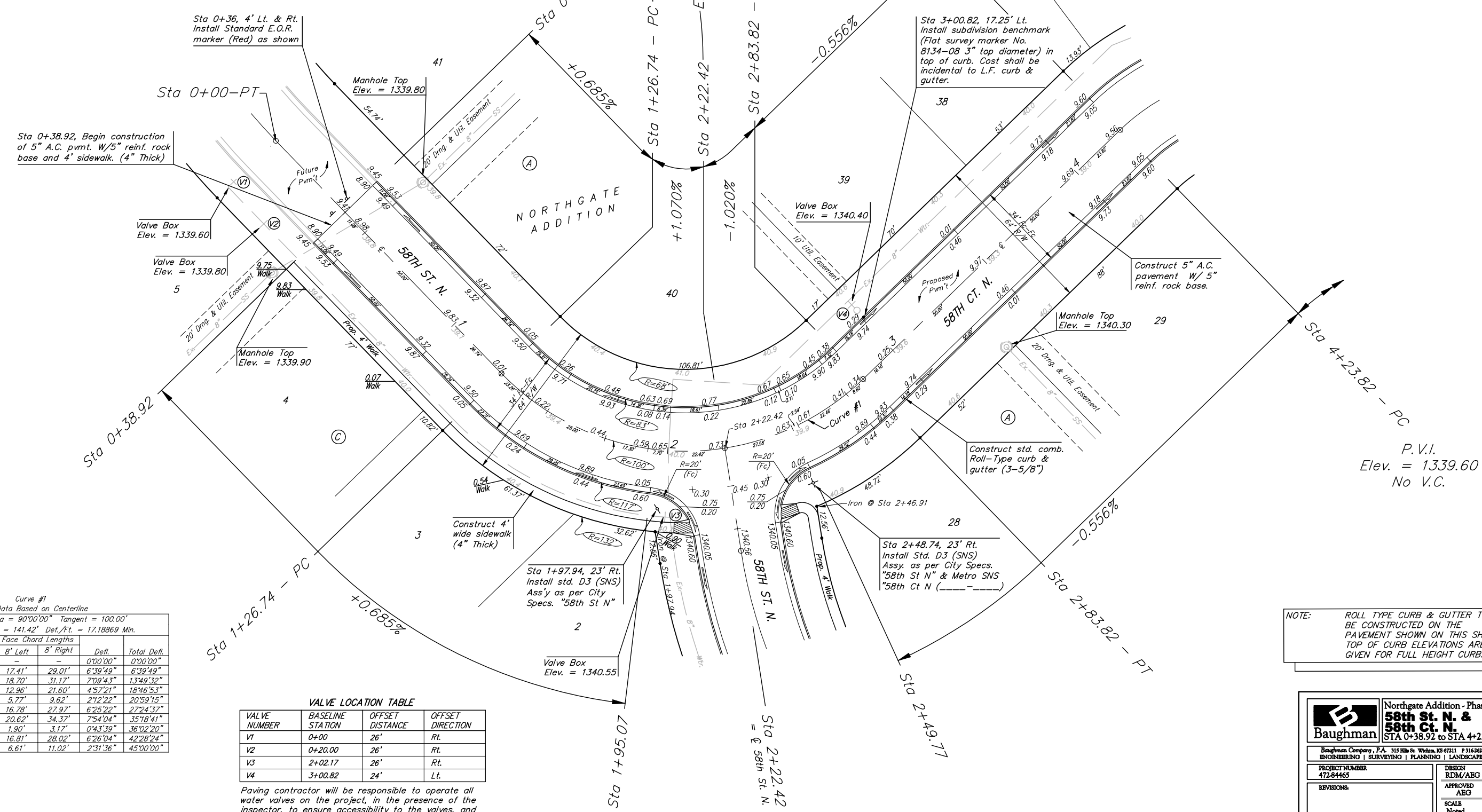
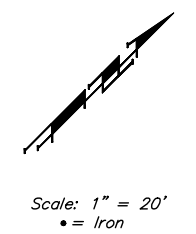


BENCHMARKS:
 BM #1: BENT 60d NAIL IN LIGHT POLE,
 55' SSW. OF THE E1/4 COR., SEC. 13,
 TWP. 26-S, R-1-W.
 ELEV. = 1336.54 NGVD29

BM #2: RAILROAD SPIKE IN E. FACE OF
 N. "H" POLE, 60± S. OF N. LINE, S1/2,
 NE1/4, SEC. 13, TWP. 26-S, R-1-W
 ELEV. = 1335.93 NGVD29

BM #3: "□" CUT ON TOP OF NE COR.
 OF WATER VAULT, 437± E. & 54± N.
 OF S1/4 COR., SEC. 13, TWP. 26-S,
 R-1-W.
 ELEV. = 1334.81 NGVD29



Curve #1
 Curve Data Based on Centerline
 Rad. = 100' Delta = 90°00'00" Tangent = 100.00'
 Arc = 157.08' L.C. = 141.42' Def./Fl. = 17.18869 Min.

Station	Arc	Face Chord Lengths		Defl.	Total Defl.
		8' Left	8' Right		
1+26.74	-	-	-	0°00'00"	0°00'00"
1+50.00	23.26'	17.41'	29.01'	6°39'49"	6°39'49"
1+75.00	25.00'	18.70'	31.17'	7°09'43"	13°49'32"
1+92.30	17.30'	12.96'	21.60'	4°57'21"	18°46'53"
2+00.00	7.70'	5.77'	9.62'	2°12'22"	20°59'15"
2+22.42	22.42'	16.78'	27.97'	6°25'22"	27°24'37"
2+50.00	27.58'	20.62'	34.37'	7°54'04"	35°18'41"
2+52.54	2.54'	1.90'	3.17'	0°43'39"	36°02'20"
2+75.00	22.46'	16.81'	28.02'	6°26'04"	42°28'24"
2+83.82	8.82'	6.61'	11.02'	2°31'36"	45°00'00"

VALVE LOCATION TABLE

VALVE NUMBER	BASELINE STATION	OFFSET DISTANCE	OFFSET DIRECTION
V1	0+00	26'	Rt.
V2	0+20.00	26'	Rt.
V3	2+02.17	26'	Rt.
V4	3+00.82	24'	Lt.

Paving contractor will be responsible to operate all water valves on the project, in the presence of the inspector, to ensure accessibility to the valves, and that all valves are left in the "ON" position when the project is completed.

NOTE: ROLL TYPE CURB & GUTTER TO BE CONSTRUCTED ON THE PAVEMENT SHOWN ON THIS SHEET. TOP OF CURB ELEVATIONS ARE GIVEN FOR FULL HEIGHT CURB.

Baughman Northgate Addition - Phase 1
58th St. N. & 58th Ct. N.
 STA 0+38.92 to STA 4+23.82

Baughman Company, P.A. 315 8th St. W. Minn. 55 6711 P 3162627771 F 3162620149
 ENGINEERING | SURVEYING | PLANNING | LANDSCAPE ARCHITECTURE

PROJECT NUMBER: 472-84465
 DESIGN: RDM/ABO
 DRAWN: RDM
 APPROVED: ABO
 DATE: 5-30-07
 SCALE: Noted
 SHEET: 7 OF 49

Northgate\Phase 1\STR\STR1.dwg 06-08-B631