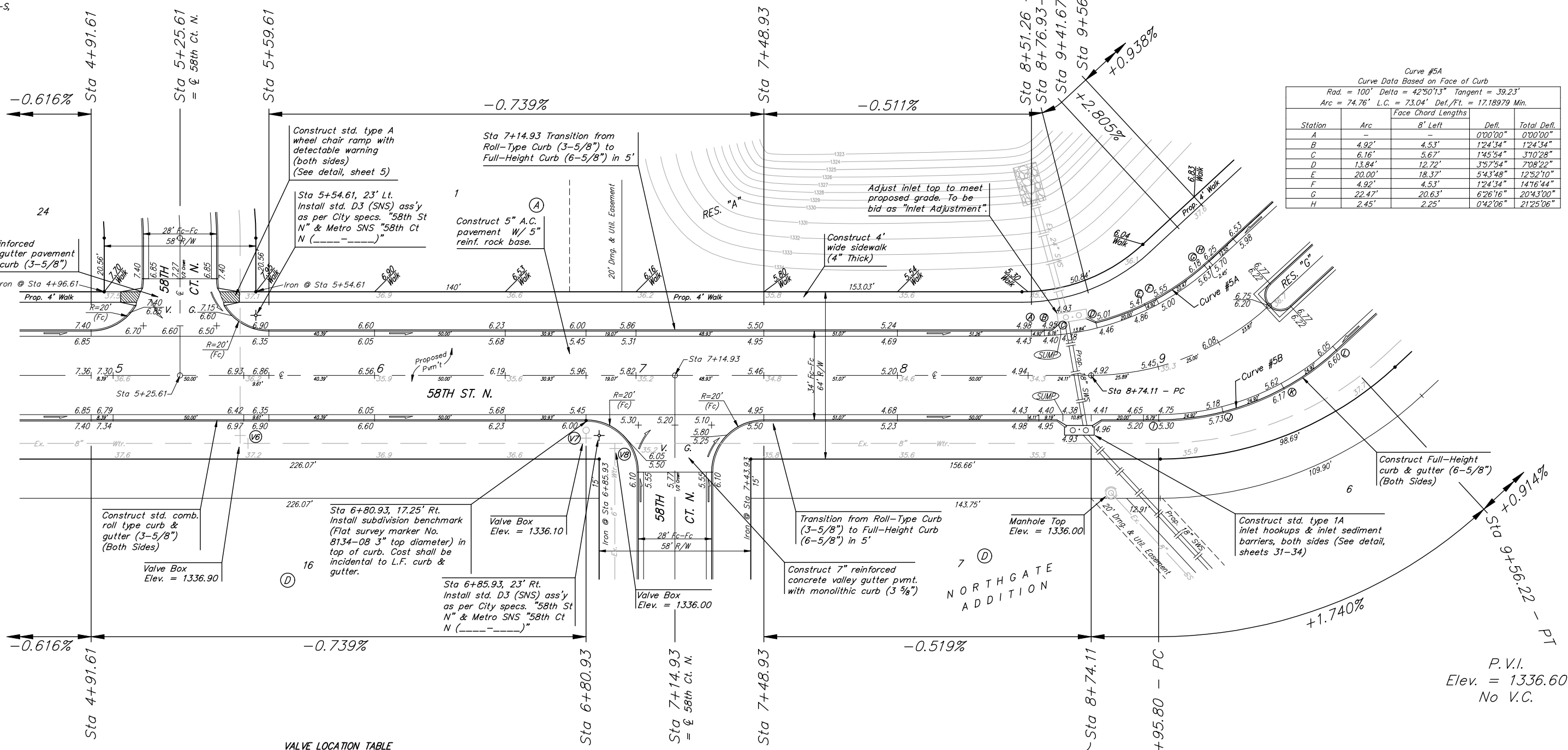
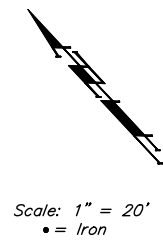


BENCHMARKS:
 BM #1: BENT 60d NAIL IN LIGHT POLE,
 55' SSW. OF THE E1/4 COR., SEC. 13,
 TWP. 26-S, R-1-W.
 ELEV. = 1336.54 NGVD29

BM #2: RAILROAD SPIKE IN E. FACE OF
 N. "H" POLE, 60± S. OF N. LINE, S1/2,
 NE1/4, SEC. 13, TWP. 26-S, R-1-W
 ELEV. = 1335.93 NGVD29

BM #3: "□" CUT ON TOP OF NE COR.
 OF WATER VAULT, 437± E. & 54± N.
 OF S1/4 COR., SEC. 13, TWP. 26-S,
 R-1-W.
 ELEV. = 1334.81 NGVD29



Curve #5A
 Curve Data Based on Face of Curb
 Rad. = 100' Delta = 42°50'13" Tangent = 39.23'
 Arc = 74.76' L.C. = 73.04' Def./Ft. = 17.18979 Min.

Station	Arc	Face Chord Lengths		
		8' Left	Defl.	Total Defl.
A	-	-	0'00"00"	0'00"00"
B	4.92'	4.53'	1'24"34"	1'24"34"
C	6.16'	5.67'	1'45"54"	3'10"28"
D	13.84'	12.72'	3'57"54"	7'08"22"
E	20.00'	18.37'	5'43"48"	12'52"10"
F	4.92'	4.53'	1'24"34"	14'16"44"
G	22.47'	20.63'	6'26"16"	20'43"00"
H	2.45'	2.25'	0'42"06"	21'25"06"

VALVE LOCATION TABLE

VALVE NUMBER	BASELINE STATION	OFFSET DISTANCE	OFFSET DIRECTION
V6	5+48.61	26'	Rt.
V7	6+80.93	24'	Rt.
V8	6+91.93	26'	Rt.

Paving contractor will be responsible to operate all water valves on the project, in the presence of the inspector, to ensure accessibility to the valves, and that all valves are left in the "ON" position when the project is completed.

Curve #5B
 Curve Data Based on Face of Curb
 Rad. = 100' Delta = 42°50'13" Tangent = 39.23'
 Arc = 74.76' L.C. = 73.04' Def./Ft. = 17.18979 Min.

Station	Arc	Face Chord Lengths		
		8' Right	Defl.	Total Defl.
I	-	-	0'00"00"	0'00"00"
J	24.92'	26.85'	7'08"22"	7'08"22"
K	24.92'	26.85'	7'08"22"	14'16"44"
L	24.92'	26.85'	7'08"22"	21'25"06"

NOTE: ROLL TYPE CURB & GUTTER TO BE CONSTRUCTED ON THE PAVEMENT SHOWN ON THIS SHEET. TOP OF CURB ELEVATIONS ARE GIVEN FOR FULL HEIGHT CURB.

Baughman Northgate Addition - Phase 1
58th St. N.
 STA 4+91.61 to STA 9+56.22

PROJECT NUMBER: 472-84465
 DESIGN: RDM/ABG
 DRAWN: RDM
 APPROVED: ABG
 DATE: 5-30-07
 SCALE: Noted
 SHEET: 10 OF 49

Northgate\Phase 1\STR\STR1.dwg 06-08-E631