

**BENCHMARKS:**  
 BM #1: BENT 60d NAIL IN LIGHT POLE,  
 55' SSW. OF THE E1/4 COR., SEC. 13,  
 TWP. 26-S, R-1-W.  
 ELEV. = 1336.54 NGVD29

BM #2: RAILROAD SPIKE IN E. FACE OF  
 N. "H" POLE, 60± S. OF N. LINE, S1/2,  
 NE1/4, SEC. 13, TWP. 26-S, R-1-W  
 ELEV. = 1335.93 NGVD29

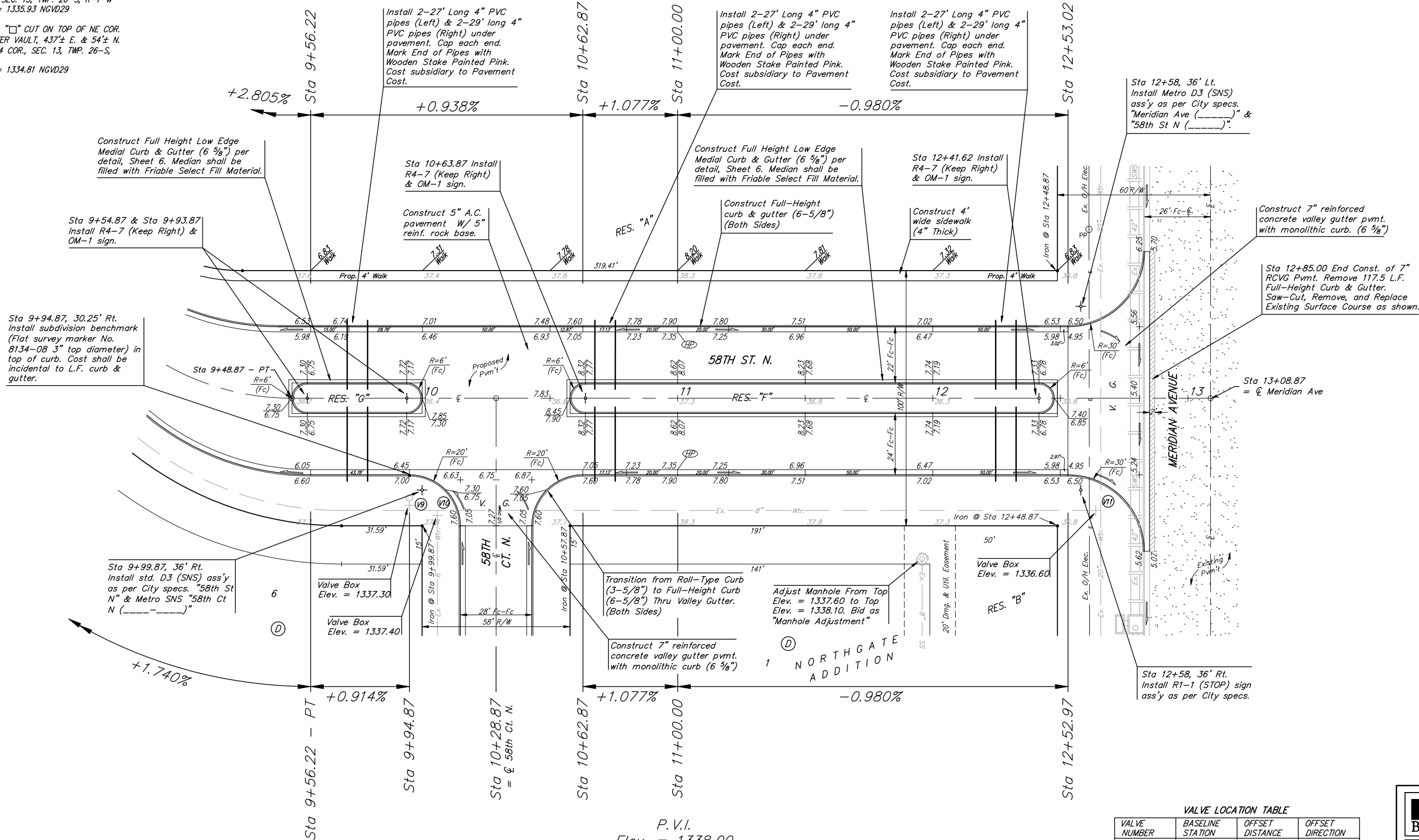
BM #3: "□" CUT ON TOP OF NE COR.  
 OF WATER VAULT, 437± E. & 54± N.  
 OF S1/4 COR., SEC. 13, TWP. 26-S,  
 R-1-W.  
 ELEV. = 1334.81 NGVD29

P.V.I.  
 Elev. = 1336.60  
 30' V.C.

P.V.I.  
 Elev. = 1337.60  
 No V.C.

P.V.I.  
 Elev. = 1338.00  
 40' V.C.

Scale: 1" = 20'  
 • = Iron



P.V.I.  
 Elev. = 1336.60  
 No V.C.

P.V.I.  
 Elev. = 1338.00  
 40' V.C.

VALVE LOCATION TABLE

VALVE NUMBER	BASELINE STATION	OFFSET DISTANCE	OFFSET DIRECTION
V9	9+94.87	42'	Rt.
V10	10+05.87	44'	Rt.
V11	12+65.87	44'	Rt.

Paving contractor will be responsible to operate all water valves on the project, in the presence of the inspector, to ensure accessibility to the valves, and that all valves are left in the "ON" position when the project is completed.

**Baughman** Northgate Addition - Phase 1  
**58th St. N.**  
 STA 9+56.22 to STA 12+53.02

PROJECT NUMBER: 472-84465  
 DESIGN: RDM/AEG  
 DRAWN: RDM  
 APPROVED: AEG  
 DATE: 5-30-07  
 SCALE: Noted  
 SHEET: **11** OF **49**

Northgate\Phase 1\STR\STR1.dwg 06-08-B631