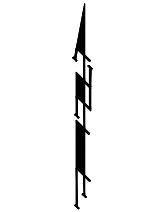


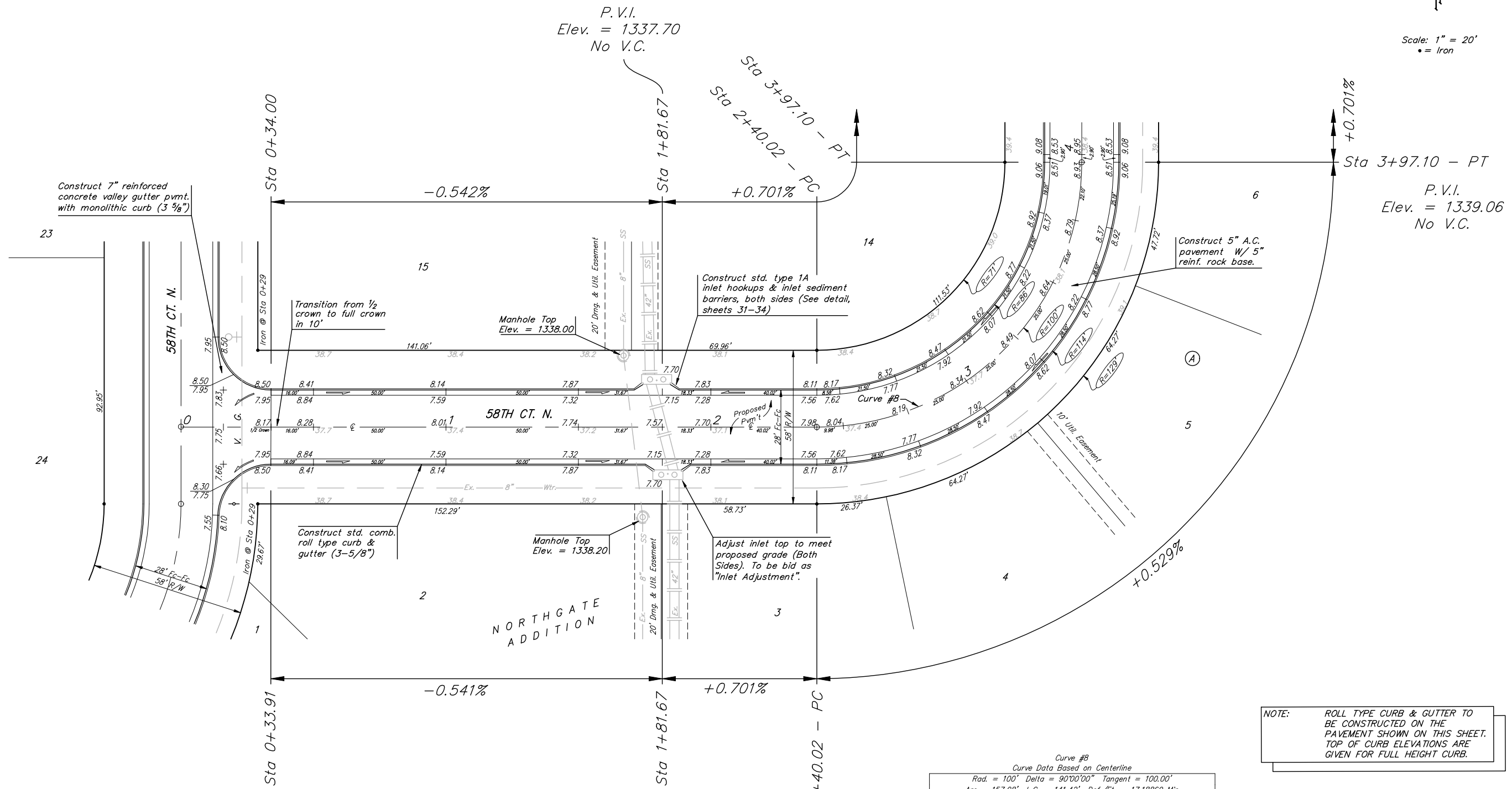
BENCHMARKS:
 BM #1: BENT 60d NAIL IN LIGHT POLE,
 55' SSW. OF THE E1/4 COR., SEC. 13,
 TWP. 26-S, R-1-W.
 ELEV. = 1336.54 NGVD29

BM #2: RAILROAD SPIKE IN E. FACE OF
 N. "H" POLE, 60± S. OF N. LINE, S1/2,
 NE1/4, SEC. 13, TWP. 26-S, R-1-W
 ELEV. = 1335.93 NGVD29

BM #3: "□" CUT ON TOP OF NE COR.
 OF WATER VAULT, 437± E. & 54± N.
 OF S1/4 COR., SEC. 13, TWP. 26-S,
 R-1-W.
 ELEV. = 1334.81 NGVD29



Scale: 1" = 20'
 • = Iron



NOTE: ROLL TYPE CURB & GUTTER TO BE CONSTRUCTED ON THE PAVEMENT SHOWN ON THIS SHEET. TOP OF CURB ELEVATIONS ARE GIVEN FOR FULL HEIGHT CURB.

Curve #8
 Curve Data Based on Centerline
 Rad. = 100' Delta = 90°00'00" Tangent = 100.00'
 Arc = 157.08' L.C. = 141.42' Def./Ft. = 17.18869 Min.

Station	Arc	Face Chord Lengths		Defl.	Total Defl.
		8' Left	8' Right		
2+40.02	-	-	-	0'00"00"	0'00"00"
2+50.00	9.98'	7.78'	12.17'	2'51"33"	2'51"33"
2+75.00	25.00'	19.45'	30.42'	7'09"43"	10'01"16"
3+00.00	25.00'	19.45'	30.42'	7'09"43"	17'10"59"
3+25.00	25.00'	19.45'	30.42'	7'09"43"	24'20"42"
3+50.00	25.00'	19.45'	30.42'	7'09"43"	31'30"25"
3+75.00	25.00'	19.45'	30.42'	7'09"43"	38'40"08"
3+97.10	22.10'	17.20'	26.91'	6'19"52"	45'00"00"

P.V.I.
 Elev. = 1337.70
 No V.C.

P.V.I.
 Elev. = 1339.06
 No V.C.

P.V.I.
 Elev. = 1337.70
 No V.C.

P.V.I.
 Elev. = 1338.11
 No V.C.

Baughman Northgate Addition - Phase 1
58th Ct. N.
 Lots 2-14, Block A

PROJECT NUMBER: 472-84465
 DESIGN: RDM/ABG
 DRAWN: RDM
 APPROVED: ABG
 DATE: 5-30-07

SCALE: Noted
 SHEET: **14 OF 49**