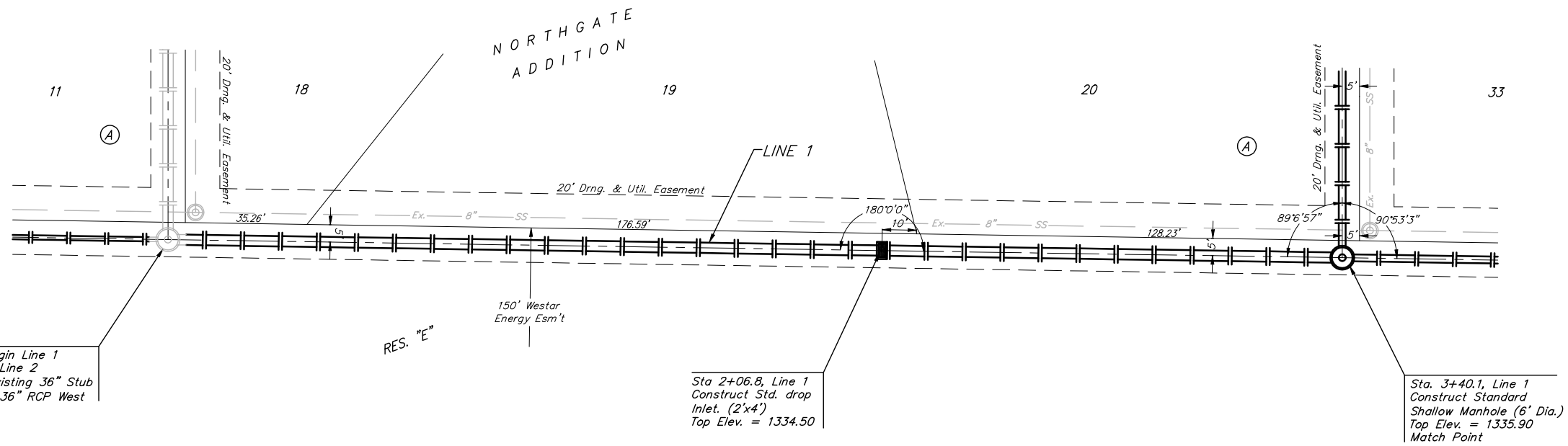


BENCHMARKS:
 BM #1: BENT 60d NAIL IN LIGHT POLE, 55' SSW. OF THE E1/4 COR., SEC. 13, TWP. 26-S, R-1-W. ELEV. = 1336.54 NGVD29

BM #2: RAILROAD SPIKE IN E. FACE OF N. "H" POLE, 60± S. OF N. LINE, S1/2, NE1/4, SEC. 13, TWP. 26-S, R-1-W. ELEV. = 1335.93 NGVD29

BM #3: "□" CUT ON TOP OF NE COR. OF WATER VAULT, 437± E. & 54± N. OF S1/4 COR., SEC. 13, TWP. 26-S, R-1-W. ELEV. = 1334.81 NGVD29

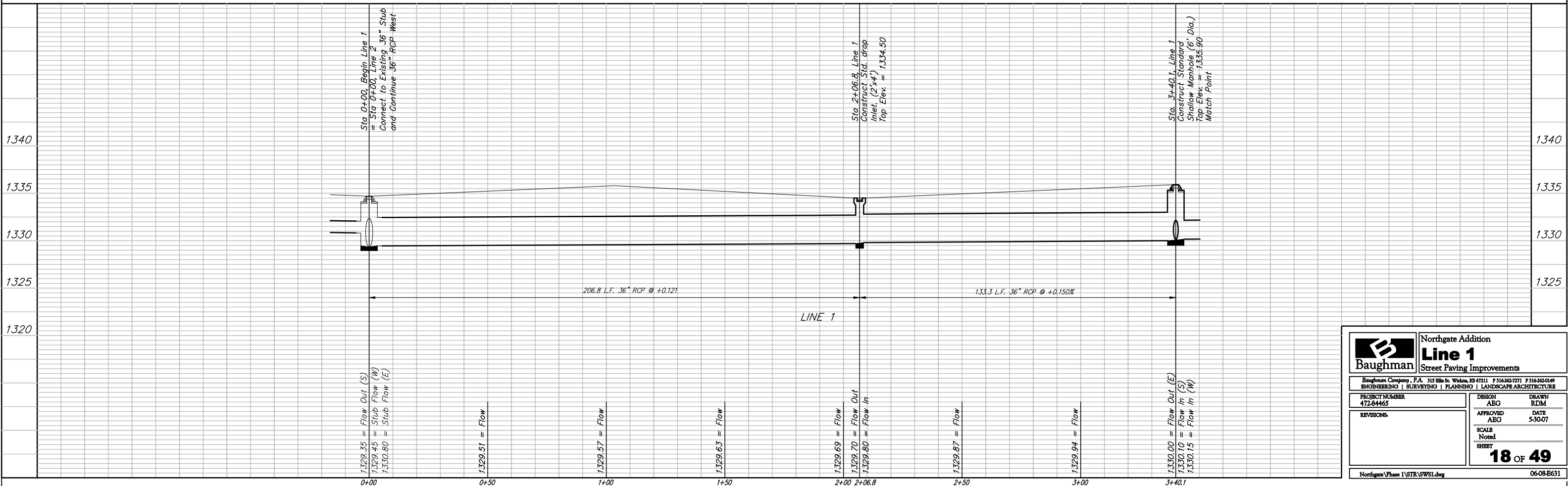


Scale: 1" = 20' Horizontal
 1" = 5' Vertical
 ● = Iron

Sta 0+00, Begin Line 1
 = Sta 0+00, Line 2
 Connect to Existing 36" Stub
 and Continue 36" RCP West

Sta 2+06.8, Line 1
 Construct Std. drop
 Inlet. (2'x4')
 Top Elev. = 1334.50

Sta. 3+40.1, Line 1
 Construct Standard
 Shallow Manhole (6' Dia.)
 Top Elev. = 1335.90
 Match Point



		Northgate Addition	
		Line 1	
Baughman Company, P.A. 315 Ellis St. Wichita, KS 67211 P 316-262-7771 F 316-262-0149 ENGINEERING SURVEYING PLANNING LANDSCAPE ARCHITECTURE		DESIGN	DRAWN
PROJECT NUMBER	472-84465	APPROVED	DATE
REVISIONS		ABG	5-30-07
		SCALE	Noted
		SHEET	18 OF 49
Northgate Phase 1\STR\SW1.dwg		06-08-E631	