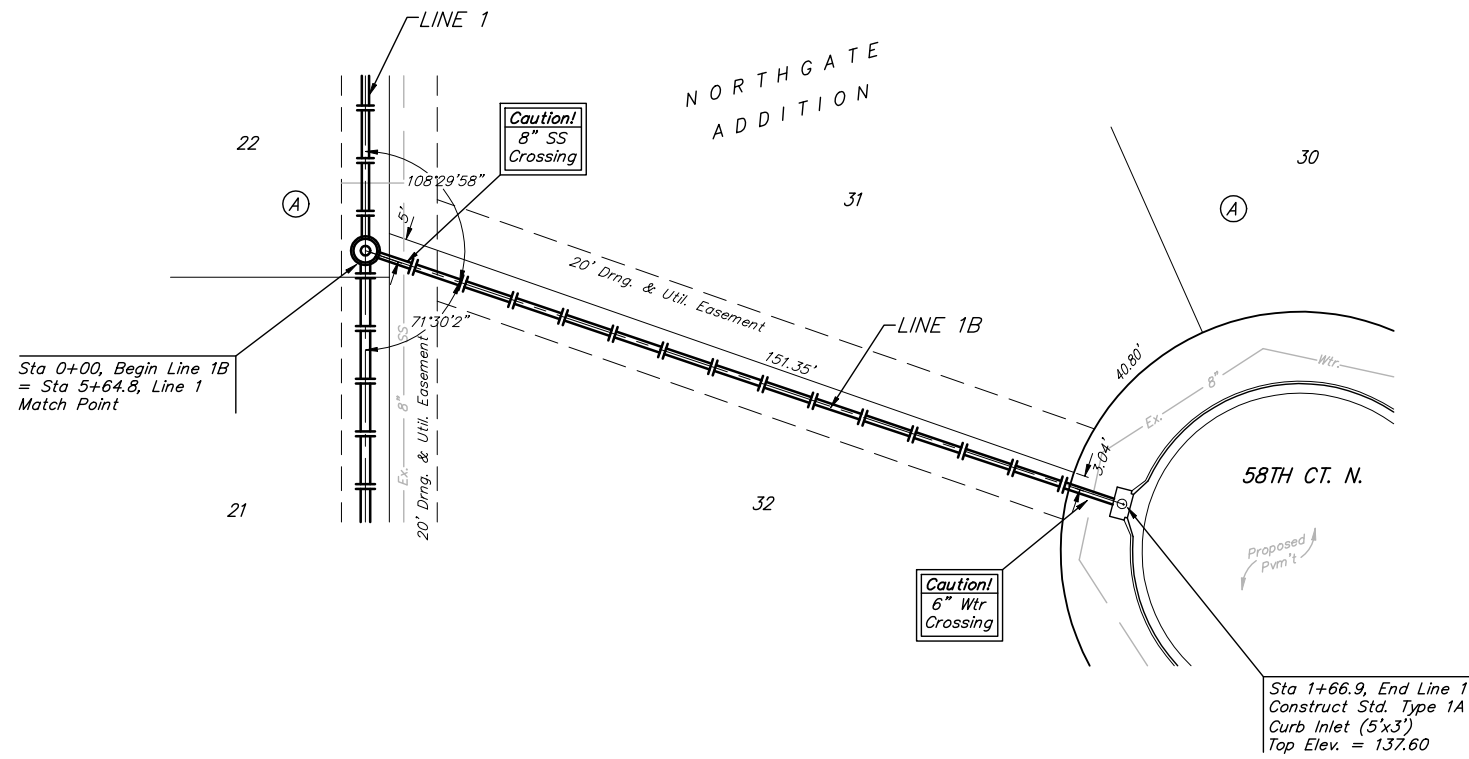


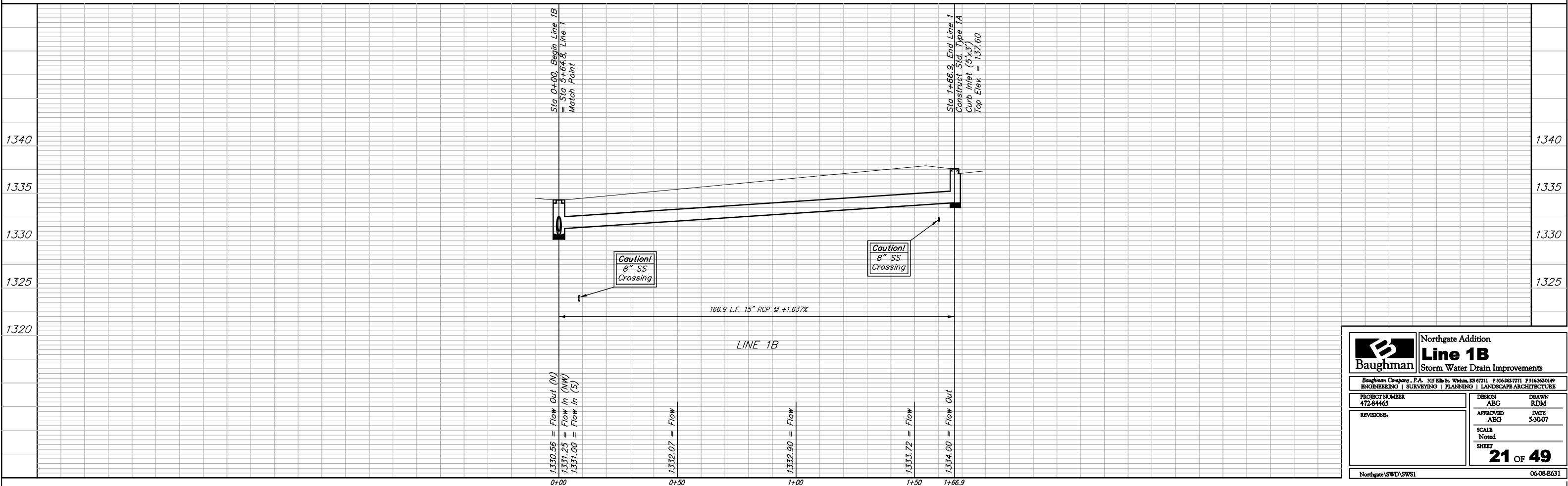
**BENCHMARKS:**  
 BM #1: BENT 60d NAIL IN LIGHT POLE, 55' SSW. OF THE E1/4 COR., SEC. 13, TWP. 26-S, R-1-W.  
 ELEV. = 1336.54 NGVD29

BM #2: RAILROAD SPIKE IN E. FACE OF N. "H" POLE, 60± S. OF N. LINE, S1/2, NE1/4, SEC. 13, TWP. 26-S, R-1-W.  
 ELEV. = 1335.93 NGVD29

BM #3: "□" CUT ON TOP OF NE COR. OF WATER VAULT, 437± E. & 54± N. OF S1/4 COR., SEC. 13, TWP. 26-S, R-1-W.  
 ELEV. = 1334.81 NGVD29



Scale: 1" = 20' Horizontal  
 1" = 5' Vertical  
 ● = Iron



<b>Baughman</b>		Northgate Addition	
		<b>Line 1B</b>	
		Storm Water Drain Improvements	
Baughman Company, P.A. 315 Ellis St. Wilkes, KS 67211 P 316-262-7771 F 316-262-0149 ENGINEERING   SURVEYING   PLANNING   LANDSCAPE ARCHITECTURE			
PROJECT NUMBER 472-84465	DESIGN AEG	DRAWN RDM	DATE 5-30-07
REVISIONS	APPROVED AEG	SCALE Noted	SHEET
			<b>21 OF 49</b>
Northgate SWD\SWS1		06-08-E631	