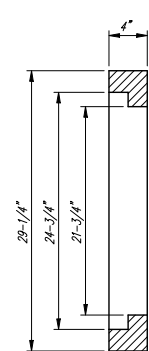
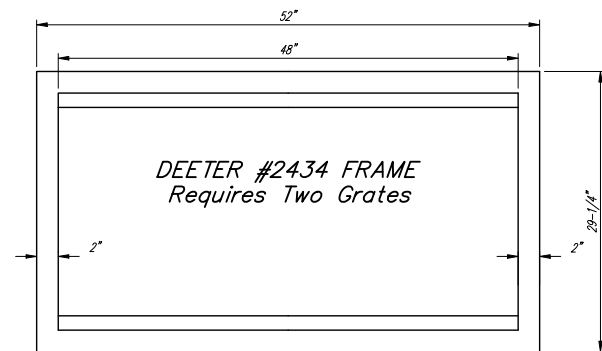


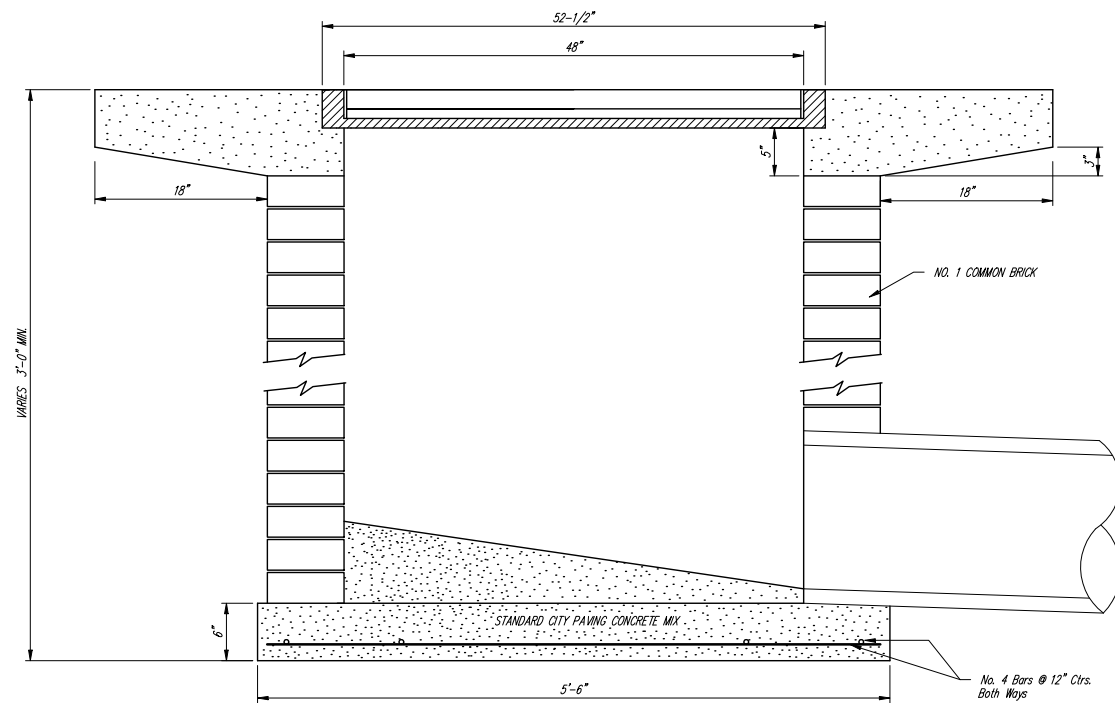
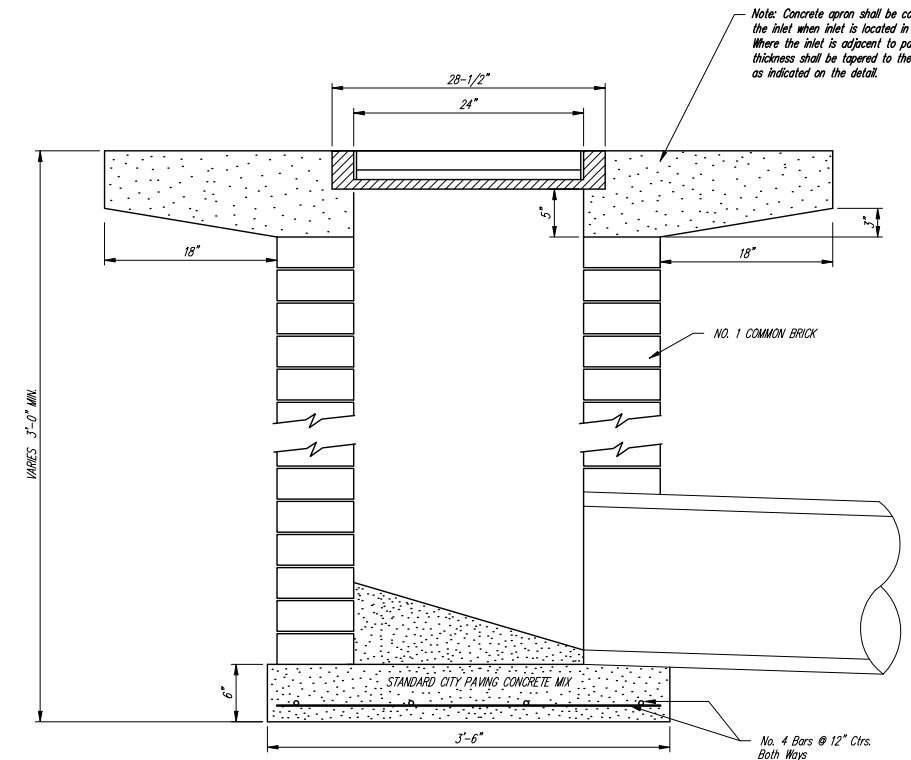
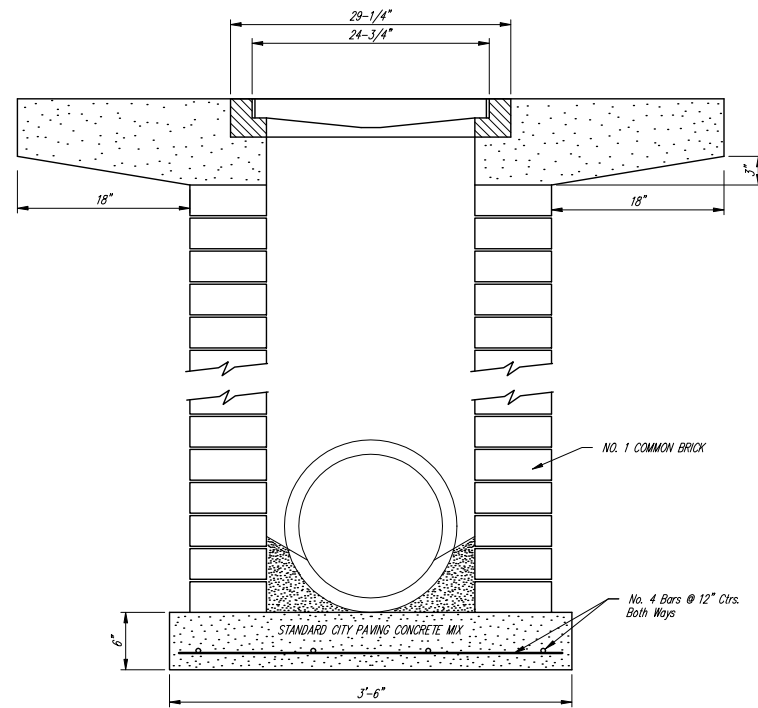
DEETER #2433 GRATE

24" x 24" Frame and Grate Detail

NOTE: Grates shall be imprinted on the top surface with "CITY OF WICHITA" using letters at least 1" in height. Other marking methods may be approved by the engineer.



Double 24" x 24" Frame Detail



|  |                  |                          |                 |
|--|------------------|--------------------------|-----------------|
|  |                  | City of Wichita Standard |                 |
|  |                  | <b>Drop Inlet Detail</b> |                 |
| Baughman Company, P.A. 315 8th St. Wichita, KS 67211 P 316-262-7771 F 316-262-0149 |                  |                          |                 |
| ENGINEERING   SURVEYING   PLANNING   LANDSCAPE ARCHITECTURE                        |                  |                          |                 |
| PROJECT NUMBER<br>472-84465  | DESIGN<br>C.O.W. | DRAWN<br>Staff           |                 |
| REVISIONS  | APPROVED         | DATE<br>5-30-07          |                 |
|  | SCALE<br>None    | SHEET                    |                 |
|  |                  |                          | <b>24 OF 49</b> |
| Northgate\Phase 1\STR\SWS Details.dwg  |                  |                          | 06-08-E631      |